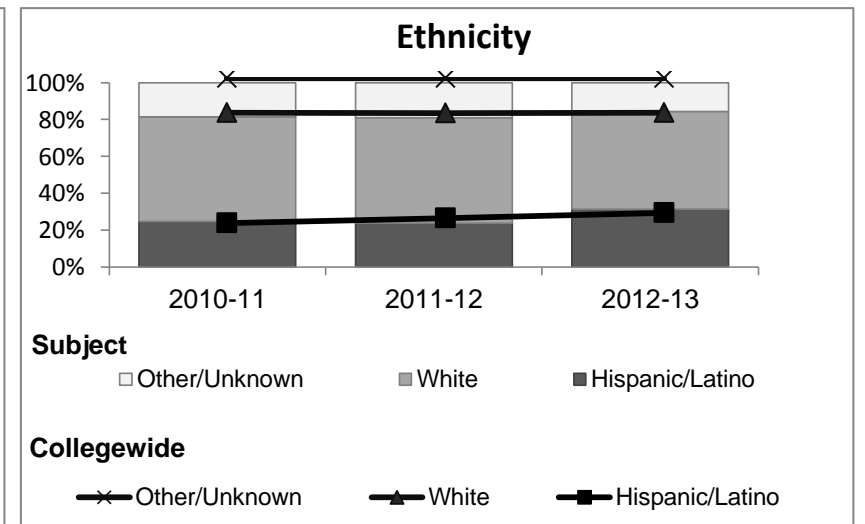
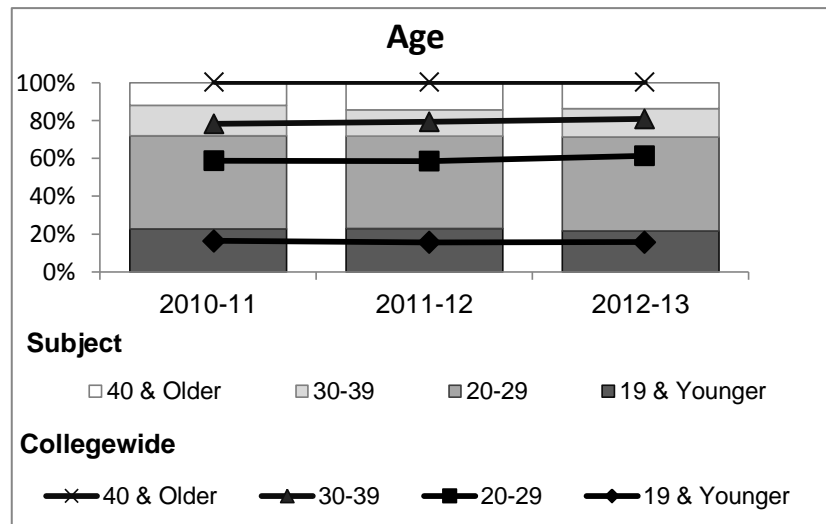
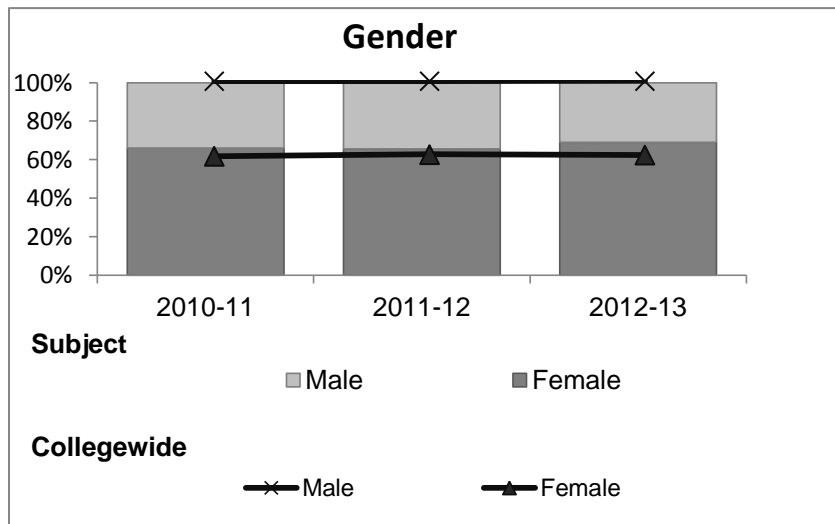


Sociology

Student Demographic Information

Student Headcount	2008-09		2009-10		2010-11		2011-12		2012-13		2012-13	
	#	% change - Prior Yr	#	% change - Prior Yr	#	% change - Prior Yr	#	% change - Prior Yr	Subject		Collegewide	
									#	% change - Prior Yr	#	% change - Prior Yr
Unduplicated ²	527	--	643	22%	903	40%	589	-35%	573	-3%	8,583	-16%

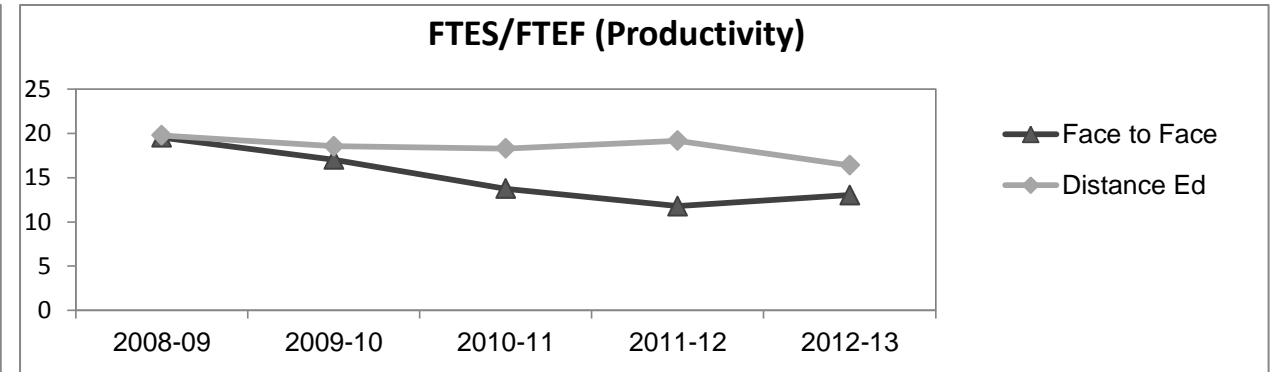
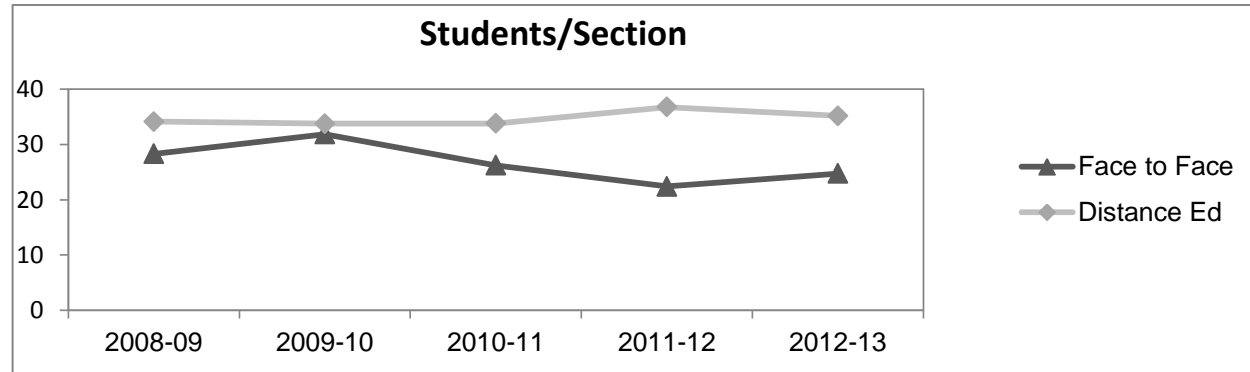
	2008-09		2009-10		2010-11		2011-12		2012-13		2012-13	
	#	%	#	%	#	%	#	%	Subject		Collegewide	
									#	%	#	%
Gender												
Female	369	70%	421	65%	596	66%	387	66%	396	69%	5,289	62%
Male	158	30%	222	35%	306	34%	200	34%	176	31%	3,283	38%
Unknown	0	0%	0	0%	1	0%	2	0%	1	0%	11	0%
Age												
19 & Younger	181	34%	188	29%	205	23%	135	23%	124	22%	1,298	15%
20-29	203	39%	274	43%	445	49%	288	49%	284	50%	3,929	46%
30-39	83	16%	88	14%	144	16%	81	14%	86	15%	1,671	19%
40 & Older	60	11%	93	14%	109	12%	85	14%	79	14%	1,685	20%
Ethnicity												
African American	28	5%	40	6%	66	7%	36	6%	41	7%	502	6%
American Indian	6	1%	15	2%	12	1%	14	2%	10	2%	177	2%
Asian/Filipino/Pac Islander	19	4%	31	5%	39	4%	25	4%	19	3%	416	5%
Hispanic/Latino	115	22%	132	21%	224	25%	140	24%	180	31%	2,554	30%
White	322	61%	388	60%	512	57%	337	57%	303	53%	4,480	52%
Two or more races	21	4%	26	4%	47	5%	35	6%	20	3%	413	5%
Unknown	16	3%	11	2%	3	0%	2	0%	0	0%	41	0%



Sociology

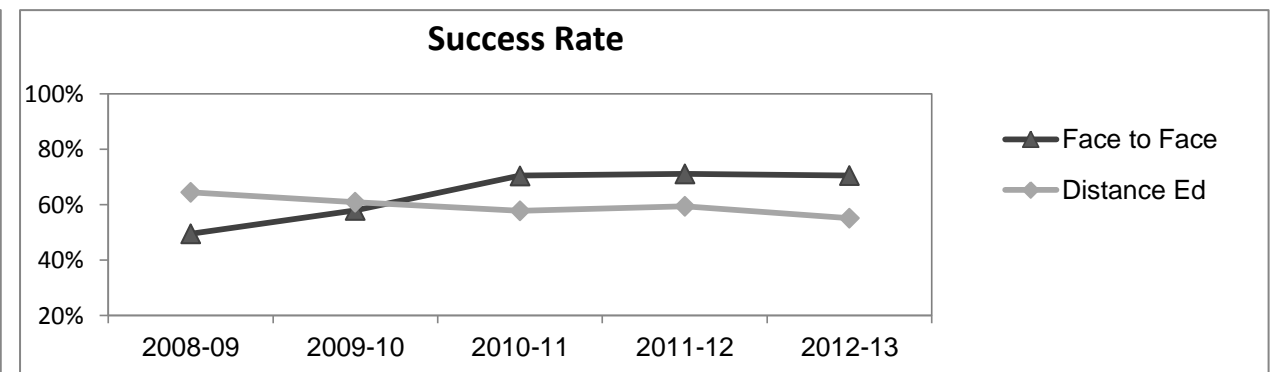
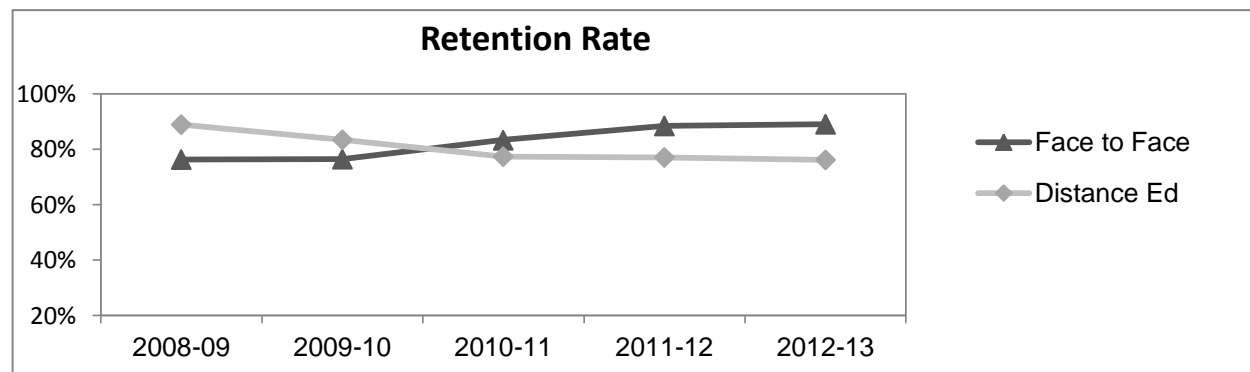
Course Enrollments - Productivity

	2008-09			2009-10			2010-11			2011-12			2012-13			2012-13		
	F-t-F ³	DE	Total	F-t-F ³	DE	Total	F-t-F ³	DE	Total	F-t-F ³	DE	Total	Subject			Collegewide		
	F-t-F ³	DE	Total	F-t-F ³	DE	Total	F-t-F ³	DE	Total	F-t-F ³	DE	Total	F-t-F ³	DE	Total	F-t-F ³	DE	Total
Number of Sections	7	11	18	6	15	21	5	25	30	10	11	21	7	13	20	511	519	1,030
Enrollment ⁴																		
Census	198	375	573	191	506	697	131	844	975	224	404	628	173	457	630	9,387	15,094	24,481
Students/Section ⁵	28	34	32	32	34	33	26	34	33	22	37	30	25	35	32	18	29	24
Productivity																		
FTES ⁶	19.5	35.6	55.1	20.4	48.2	68.6	13.7	80.4	94.1	23.5	38.3	61.9	18.2	42.6	60.8	1,368.1	1,573.3	2,941.4
FTEF ⁶	1.0	1.8	2.8	1.2	2.6	3.8	1.0	4.4	5.4	2.0	2.0	4.0	1.4	2.6	4.0	98.2	104.3	202.5
<i>Contract</i>			7%			32%			11%			30%			43%			38%
<i>Overload</i>			0%			0%			15%			5%			22%			12%
<i>Adjunct</i>			71%			47%			44%			45%			15%			36%
<i>Summer</i>			21%			21%			30%			20%			20%			14%
FTES/FTEF ⁷	19.5	19.8	19.7	17.0	18.5	18.1	13.7	18.3	17.4	11.8	19.2	15.5	13.0	16.4	15.2	13.9	15.1	14.5



Outcomes

	2008-09			2009-10			2010-11			2011-12			2012-13			2012-13		
	F-t-F ³	DE	Total	F-t-F ³	DE	Total	F-t-F ³	DE	Total	F-t-F ³	DE	Total	Subject			Collegewide		
	F-t-F ³	DE	Total	F-t-F ³	DE	Total	F-t-F ³	DE	Total	F-t-F ³	DE	Total	F-t-F ³	DE	Total	F-t-F ³	DE	Total
Retention Rate ⁸	76.3%	88.9%	84.5%	76.4%	83.5%	81.5%	83.3%	77.3%	78.1%	88.4%	77.0%	81.1%	89.0%	76.1%	79.7%	90.1%	78.5%	83.0%
Success Rate ⁸	49.5%	64.4%	59.2%	57.9%	60.8%	60.0%	70.5%	57.8%	59.5%	71.1%	59.4%	63.6%	70.5%	55.1%	59.4%	75.9%	61.0%	66.8%



Sociology

Degrees - Certificates

													2012-13					
	2008-09			2009-10			2010-11			2011-12			Subject			Collegewide		
	AA	AS	CERT	AA	AS	CERT	AA	AS	CERT	AA	AS	CERT	AA	AS	CERT	AA	AS	CERT
Awards related to or contributed to by Social Science																		
Social Science	30	0	0	21	0	0	13	0	0	1	0	0	3	0	0			
Humanities	3	0	0	3	0	0	3	0	0	0	0	0	0	0	0			
Total Awards by Type	33	0	0	24	0	0	16	0	0	1	0	0	3	0	0	193	61	121
% of total awards by type	100%	0%	0%	100%	0%	0%	100%	0%	0%	100%	0%	0%	100%	0%	0%	51%	16%	32%
Total Awards	33			24			16			1			3			375		
Liberal Arts/Social & Behvrl	28	0	0	24	0	0	79	0	0	58	0	0	62	0	0			
Liberal Arts/Math & Science	3	0	0	14	0	0	21	0	0	23	0	0	44	0	0			
Business Administration	2	9	3	13	7	1	19	7	1	23	3	0	24	1	0			
Liberal Arts/Arts & Humanities	3	0	0	13	0	0	33	0	0	37	0	0	42	0	0			
Human Services	0	0	0	0	6	0	0	5	0	0	8	0	0	6	0			
Human Services Worker	0	0	0	0	0	1	0	0	3	0	0	8	0	0	9			
Administration of Justice	0	7	7	0	12	6	0	17	6	0	2	3	0	6	3			

Notes¹ **Source:** ODS Reports (July, 2013)² **Student Headcount, *Unduplicated*:** Number of students enrolled on census day, where each student is counted one time.³ **F-t-F:** Face to Face instructional delivery mode.⁴ **Enrollment:** Every course in which students are enrolled on census day.⁵ **Students/Section:** Student enrollments per section on census day. Cross-listed sections are not combined.⁶ Acronyms **FTES** and **FTEF** represent full-time equivalent students and full-time equivalent faculty, respectively.⁷ **FTES/FTEF:** A measurement of productivity where the generally accepted target is 17.5.⁸ **Success rate numerator:** Number of course enrollments with a successful passing grade (A,B,C,P/CR).**Retention rate numerator:** Number of course enrollments retained through the semester (grade = A,B,C,P/CR,D,F,NP/NC,I).**Success and Retention rate denominator:** Number of enrollments retained (A,B,C,P/CR,D,F,NP/NC,I), withdrawn (W), and dropped after Census Day (DR).