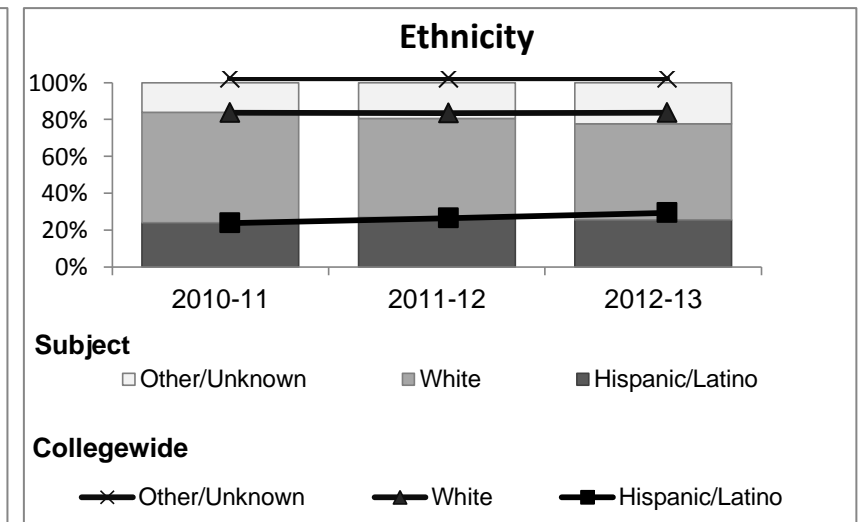
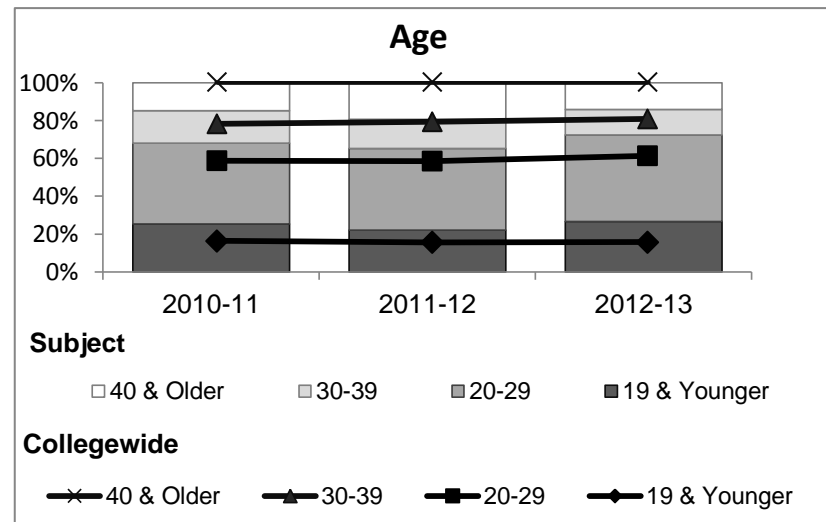
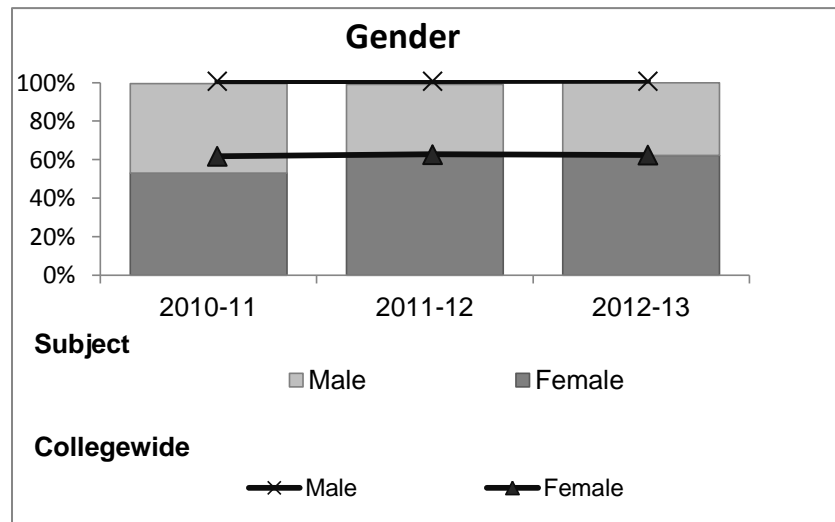


Reading

Student Demographic Information

Student Headcount	2008-09		2009-10		2010-11		2011-12		2012-13		2012-13	
	#	% change - Prior Yr	#	% change - Prior Yr	#	% change - Prior Yr	#	% change - Prior Yr	Subject		Collegewide	
									#	% change - Prior Yr	#	% change - Prior Yr
Unduplicated ²	279	--	280	0%	228	-19%	190	-17%	98	-48%	8,583	-16%

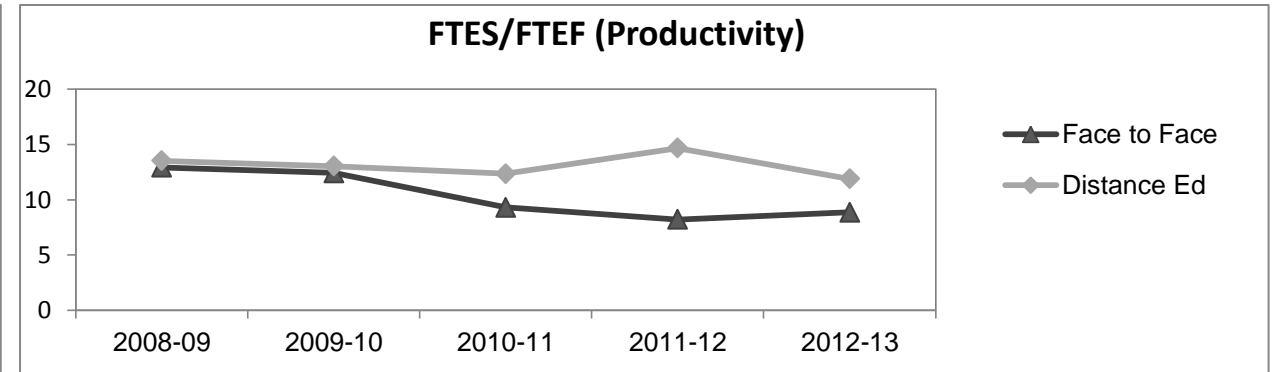
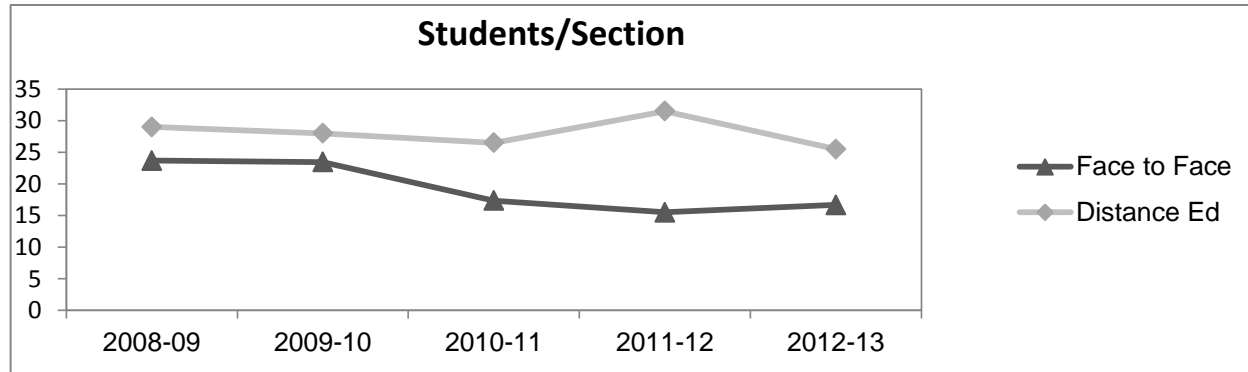
	2008-09		2009-10		2010-11		2011-12		2012-13		2012-13	
	#	%	#	%	#	%	#	%	Subject		Collegewide	
									#	%	#	%
Gender												
Female	177	63%	185	66%	121	53%	117	62%	61	62%	5,289	62%
Male	100	36%	95	34%	106	46%	71	37%	37	38%	3,283	38%
Unknown	2	1%	0	0%	1	0%	2	1%	0	0%	11	0%
Age												
19 & Younger	87	31%	68	24%	58	25%	42	22%	26	27%	1,298	15%
20-29	109	39%	114	41%	97	43%	82	43%	45	46%	3,929	46%
30-39	40	14%	39	14%	39	17%	29	15%	13	13%	1,671	19%
40 & Older	43	15%	59	21%	34	15%	37	19%	14	14%	1,685	20%
Ethnicity												
African American	13	5%	17	6%	16	7%	10	5%	9	9%	502	6%
American Indian	6	2%	8	3%	9	4%	7	4%	3	3%	177	2%
Asian/Filipino/Pac Islander	22	8%	22	8%	4	2%	8	4%	1	1%	416	5%
Hispanic/Latino	64	23%	55	20%	55	24%	51	27%	25	26%	2,554	30%
White	161	58%	166	59%	136	60%	102	54%	51	52%	4,480	52%
Two or more races	5	2%	9	3%	6	3%	12	6%	9	9%	413	5%
Unknown	8	3%	3	1%	2	1%	0	0%	0	0%	41	0%



Reading

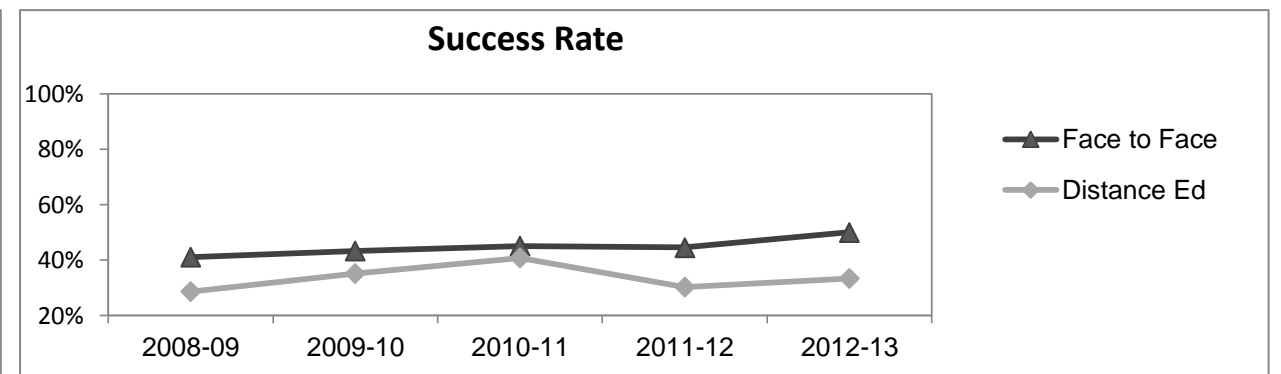
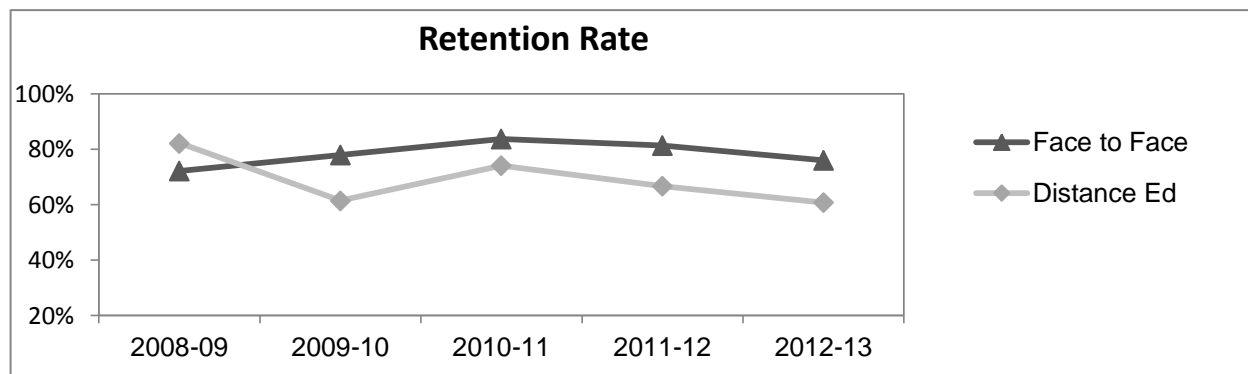
Course Enrollments - Productivity

	2008-09			2009-10			2010-11			2011-12			2012-13			2012-13		
	F-t-F ³	DE	Total	F-t-F ³	DE	Total	F-t-F ³	DE	Total	F-t-F ³	DE	Total	Subject			Collegewide		
	F-t-F ³	DE	Total	F-t-F ³	DE	Total	F-t-F ³	DE	Total	F-t-F ³	DE	Total	F-t-F ³	DE	Total	F-t-F ³	DE	Total
Number of Sections	12	1	13	11	2	13	11	2	13	10	2	12	3	2	5	511	519	1,030
Enrollment ⁴																		
Census	284	29	313	258	56	314	191	53	244	155	63	218	50	51	101	9,387	15,094	24,481
Students/Section ⁵	24	29	24	23	28	24	17	27	19	16	32	18	17	26	20	18	29	24
Productivity																		
FTES ⁶	35.3	2.7	38.0	30.6	5.2	35.8	24.8	4.9	29.8	19.7	5.9	25.6	5.9	4.8	10.7	1,368.1	1,573.3	2,941.4
FTEF ⁶	2.7	0.2	2.9	2.5	0.4	2.9	2.7	0.4	3.1	2.4	0.4	2.8	0.7	0.4	1.1	98.2	104.3	202.5
<i>Contract</i>			57%			51%			48%			40%			9%			38%
<i>Overload</i>			25%			16%			7%			10%			53%			12%
<i>Adjunct</i>			18%			26%			39%			33%			19%			36%
<i>Summer</i>			0%			7%			7%			17%			19%			14%
FTES/FTEF ⁷	12.9	13.5	13.0	12.4	13.0	12.5	9.3	12.3	9.7	8.2	14.7	9.1	8.9	11.9	10.0	13.9	15.1	14.5



Outcomes

	2008-09			2009-10			2010-11			2011-12			2012-13			2012-13		
	F-t-F ³	DE	Total	F-t-F ³	DE	Total	F-t-F ³	DE	Total	F-t-F ³	DE	Total	Subject			Collegewide		
	F-t-F ³	DE	Total	F-t-F ³	DE	Total	F-t-F ³	DE	Total	F-t-F ³	DE	Total	F-t-F ³	DE	Total	F-t-F ³	DE	Total
Retention Rate ⁸	72.1%	82.1%	73.1%	77.9%	61.4%	74.7%	83.8%	74.1%	81.6%	81.3%	66.7%	77.1%	76.0%	60.8%	68.3%	90.1%	78.5%	83.0%
Success Rate ⁸	41.0%	28.6%	39.8%	43.3%	35.1%	41.7%	45.0%	40.7%	44.1%	44.5%	30.2%	40.4%	50.0%	33.3%	41.6%	75.9%	61.0%	66.8%



Reading

Degrees - Certificates

													2012-13					
	2008-09			2009-10			2010-11			2011-12			Subject			Collegewide		
	AA	AS	CERT	AA	AS	CERT	AA	AS	CERT	AA	AS	CERT	AA	AS	CERT	AA	AS	CERT
Awards related to or contributed to by English																		
Total Awards by Type	0	0	0	0	0	0	0	0	0	0	0	0	0	0	0	193	61	121
% of total awards by type																51%	16%	32%
Total Awards	0			0			0			0			0			375		
Liberal Arts/Arts & Humanities	3	0	0	13	0	0	33	0	0	37	0	0	42	0	0			
Human Services	0	0	0	0	6	0	0	5	0	0	8	0	0	6	0			
Human Services Worker	0	0	0	0	0	1	0	0	3	0	0	8	0	0	9			
Web Design	0	7	2	0	4	1	0	1	1	0	2	3	0	2	3			

Notes

- ¹ **Source:** ODS Reports (July, 2013)
- ² **Student Headcount, *Unduplicated*:** Number of students enrolled on census day, where each student is counted one time.
- ³ **F-t-F:** Face to Face instructional delivery mode.
- ⁴ **Enrollment:** Every course in which students are enrolled on census day.
- ⁵ **Students/Section:** Student enrollments per section on census day. Cross-listed sections are not combined.
- ⁶ Acronyms **FTES** and **FTEF** represent full-time equivalent students and full-time equivalent faculty, respectively.
- ⁷ **FTES/FTEF:** A measurement of productivity where the generally accepted target is 17.5.
- ⁸ **Success rate numerator:** Number of course enrollments with a successful passing grade (A,B,C,P/CR).
- Retention rate numerator:** Number of course enrollments retained through the semester (grade = A,B,C,P/CR,D,F,NP/NC,I).
- Success and Retention rate denominator:** Number of enrollments retained (A,B,C,P/CR,D,F,NP/NC,I), withdrawn (W), and dropped after Census Day (DR).