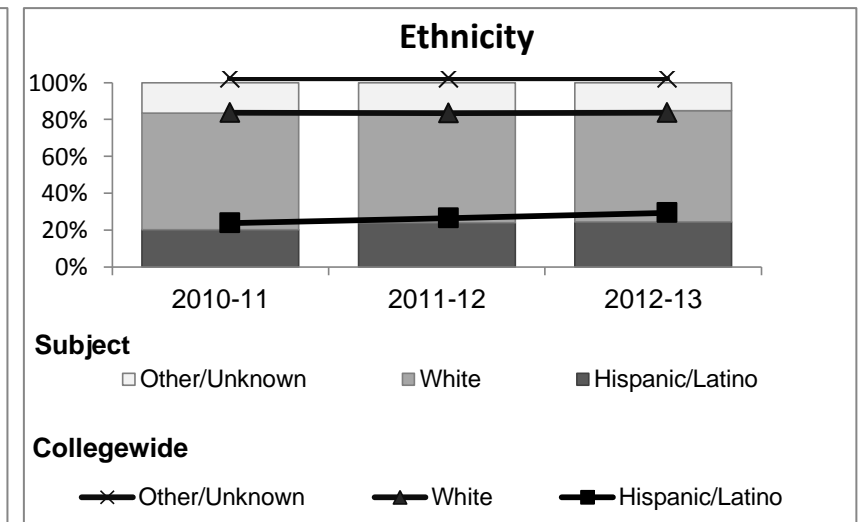
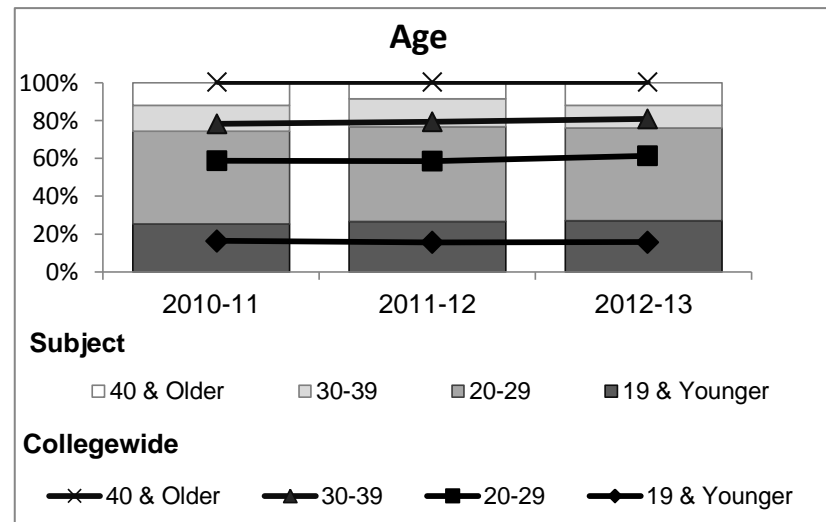
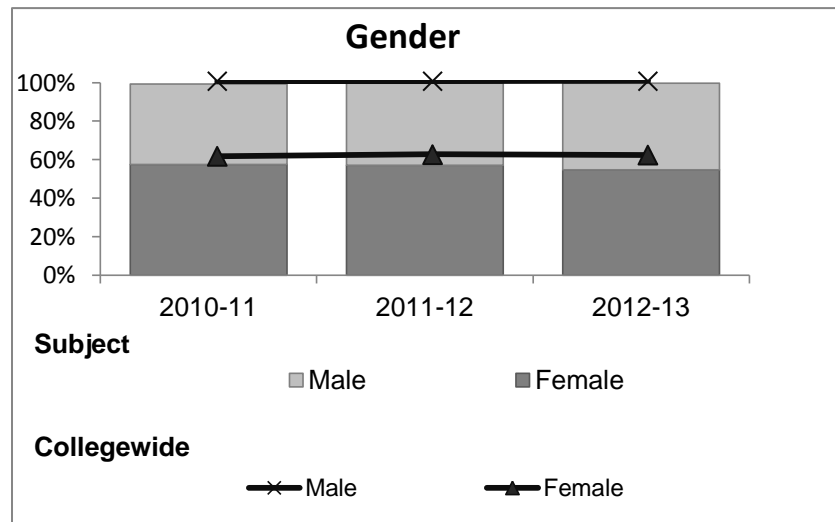


Political Science

Student Demographic Information

Student Headcount	2008-09		2009-10		2010-11		2011-12		2012-13		2012-13	
	#	% change - Prior Yr	#	% change - Prior Yr	#	% change - Prior Yr	#	% change - Prior Yr	Subject		Collegewide	
									#	% change - Prior Yr	#	% change - Prior Yr
Unduplicated ²	398	--	397	0%	400	1%	375	-6%	392	5%	8,583	-16%

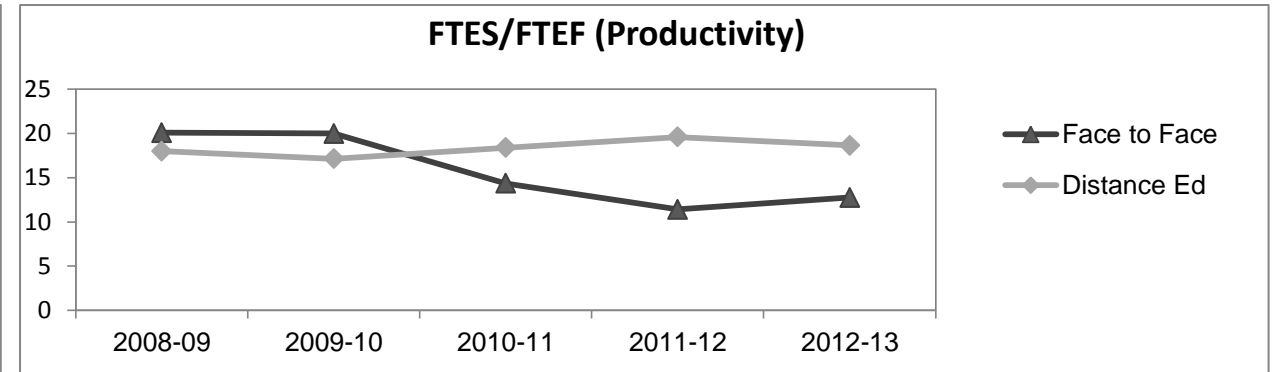
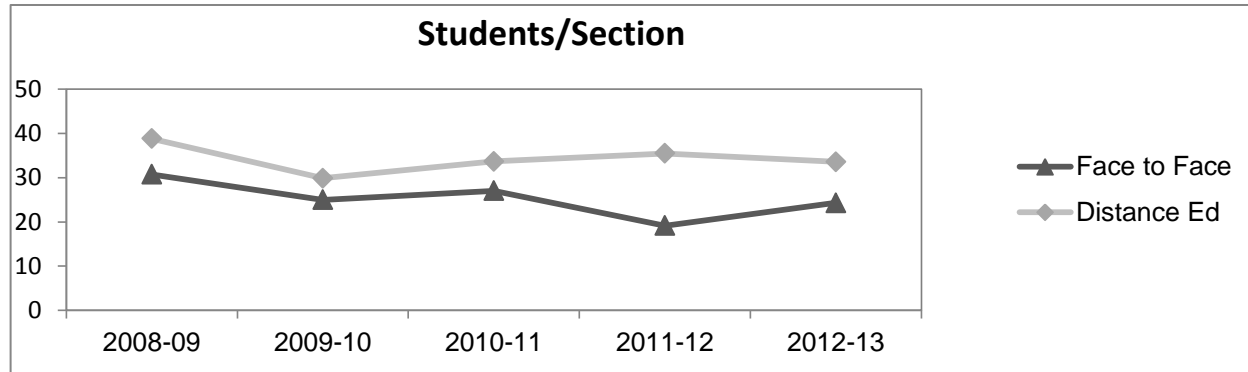
	2008-09		2009-10		2010-11		2011-12		2012-13		2012-13	
	#	%	#	%	#	%	#	%	Subject		Collegewide	
									#	%	#	%
Gender												
Female	229	58%	214	54%	230	58%	214	57%	215	55%	5,289	62%
Male	167	42%	183	46%	167	42%	160	43%	176	45%	3,283	38%
Unknown	2	1%	0	0%	3	1%	1	0%	1	0%	11	0%
Age												
19 & Younger	149	37%	157	40%	101	25%	100	27%	106	27%	1,298	15%
20-29	171	43%	161	41%	196	49%	188	50%	192	49%	3,929	46%
30-39	42	11%	46	12%	55	14%	55	15%	47	12%	1,671	19%
40 & Older	36	9%	33	8%	48	12%	32	9%	47	12%	1,685	20%
Ethnicity												
African American	15	4%	15	4%	21	5%	16	4%	15	4%	502	6%
American Indian	9	2%	6	2%	9	2%	7	2%	5	1%	177	2%
Asian/Filipino/Pac Islander	24	6%	23	6%	9	2%	14	4%	13	3%	416	5%
Hispanic/Latino	61	15%	57	14%	81	20%	90	24%	96	24%	2,554	30%
White	261	66%	264	66%	253	63%	225	60%	236	60%	4,480	52%
Two or more races	13	3%	25	6%	25	6%	22	6%	27	7%	413	5%
Unknown	15	4%	7	2%	2	1%	1	0%	0	0%	41	0%



Political Science

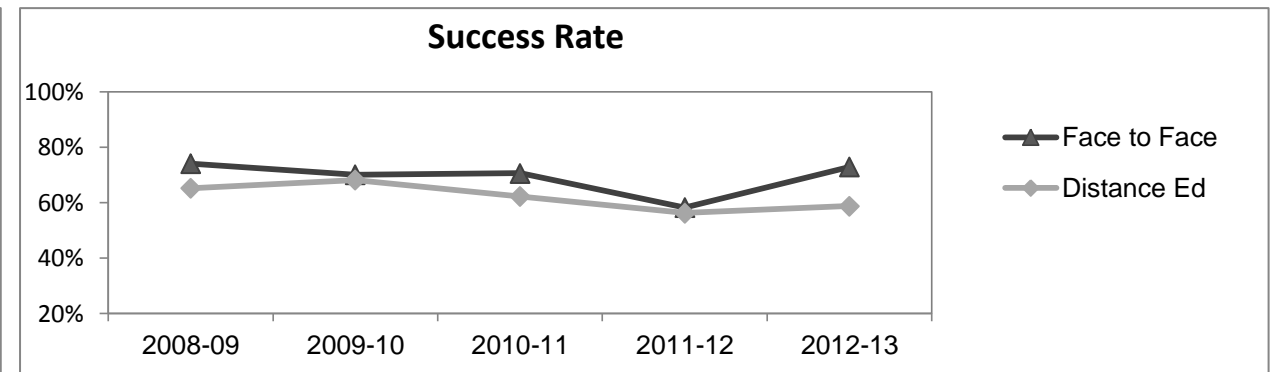
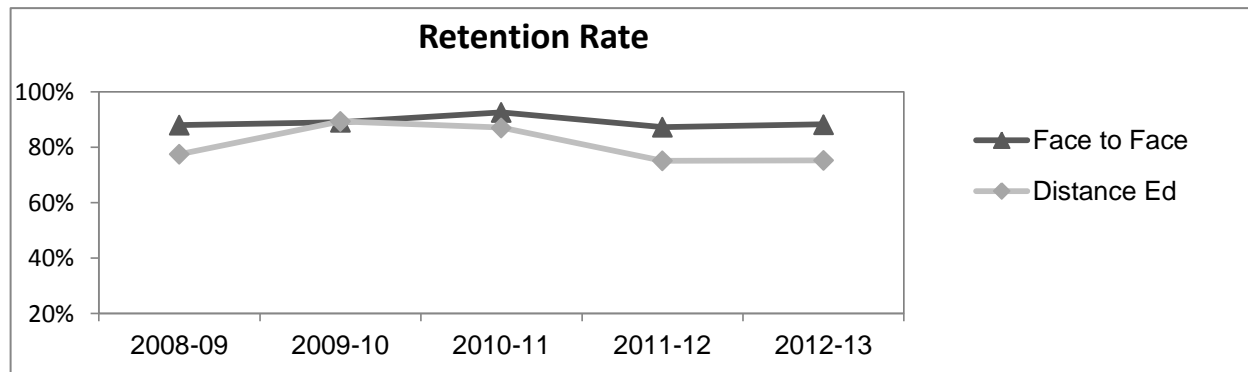
Course Enrollments - Productivity

	2008-09			2009-10			2010-11			2011-12			2012-13			2012-13		
	F-t-F ³	DE	Total	F-t-F ³	DE	Total	F-t-F ³	DE	Total	F-t-F ³	DE	Total	Subject			Collegewide		
	F-t-F ³	DE	Total	F-t-F ³	DE	Total	F-t-F ³	DE	Total	F-t-F ³	DE	Total	F-t-F ³	DE	Total	F-t-F ³	DE	Total
Number of Sections	7	5	12	8	6	14	5	8	13	7	7	14	7	7	14	511	519	1,030
Enrollment ⁴																		
Census	215	194	409	200	179	379	135	269	404	134	248	382	170	235	405	9,387	15,094	24,481
Students/Section ⁵	31	39	34	25	30	27	27	34	31	19	35	27	24	34	29	18	29	24
Productivity																		
FTES ⁶	24.1	18.0	42.1	25.3	17.1	42.4	14.4	25.7	40.1	14.5	23.5	37.9	17.8	22.3	40.2	1,368.1	1,573.3	2,941.4
FTEF ⁶	1.2	1.0	2.2	1.3	1.0	2.3	1.0	1.4	2.4	1.3	1.2	2.5	1.4	1.2	2.6	98.2	104.3	202.5
Contract			18%			12%			8%			24%			15%			38%
Overload			18%			0%			0%			11%			23%			12%
Adjunct			45%			71%			83%			65%			54%			36%
Summer			18%			18%			8%			0%			8%			14%
FTES/FTEF ⁷	20.1	18.0	19.1	20.0	17.1	18.7	14.4	18.4	16.7	11.4	19.6	15.4	12.7	18.6	15.5	13.9	15.1	14.5



Outcomes

	2008-09			2009-10			2010-11			2011-12			2012-13			2012-13		
	F-t-F ³	DE	Total	F-t-F ³	DE	Total	F-t-F ³	DE	Total	F-t-F ³	DE	Total	Subject			Collegewide		
	F-t-F ³	DE	Total	F-t-F ³	DE	Total	F-t-F ³	DE	Total	F-t-F ³	DE	Total	F-t-F ³	DE	Total	F-t-F ³	DE	Total
Retention Rate ⁸	88.0%	77.5%	83.2%	89.0%	89.4%	89.2%	92.6%	87.0%	88.9%	87.3%	75.1%	79.4%	88.2%	75.3%	80.7%	90.1%	78.5%	83.0%
Success Rate ⁸	74.1%	65.2%	70.1%	70.0%	68.2%	69.2%	70.6%	62.2%	65.0%	58.2%	56.2%	56.9%	72.9%	58.7%	64.7%	75.9%	61.0%	66.8%



Political Science

Degrees - Certificates

													2012-13					
	2008-09			2009-10			2010-11			2011-12			Subject			Collegewide		
	AA	AS	CERT	AA	AS	CERT	AA	AS	CERT	AA	AS	CERT	AA	AS	CERT	AA	AS	CERT
Awards related to or contributed to by Social Science																		
Social Science	30	0	0	21	0	0	13	0	0	1	0	0	3	0	0			
Humanities	3	0	0	3	0	0	3	0	0	0	0	0	0	0	0			
Total Awards by Type	33	0	0	24	0	0	16	0	0	1	0	0	3	0	0	193	61	121
% of total awards by type	100%	0%	0%	100%	0%	0%	100%	0%	0%	100%	0%	0%	100%	0%	0%	51%	16%	32%
Total Awards	33			24			16			1			3			375		
Liberal Arts/Social & Behvrl	28	0	0	24	0	0	79	0	0	58	0	0	62	0	0			
Liberal Arts/Math & Science	3	0	0	14	0	0	21	0	0	23	0	0	44	0	0			
Business Administration	2	9	3	13	7	1	19	7	1	23	3	0	24	1	0			
Liberal Arts/Arts & Humanities	3	0	0	13	0	0	33	0	0	37	0	0	42	0	0			
Human Services	0	0	0	0	6	0	0	5	0	0	8	0	0	6	0			
Human Services Worker	0	0	0	0	0	1	0	0	3	0	0	8	0	0	9			
Administration of Justice	0	7	7	0	12	6	0	17	6	0	2	3	0	6	3			

Notes¹ **Source:** ODS Reports (July, 2013)² **Student Headcount, *Unduplicated*:** Number of students enrolled on census day, where each student is counted one time.³ **F-t-F:** Face to Face instructional delivery mode.⁴ **Enrollment:** Every course in which students are enrolled on census day.⁵ **Students/Section:** Student enrollments per section on census day. Cross-listed sections are not combined.⁶ Acronyms **FTES** and **FTEF** represent full-time equivalent students and full-time equivalent faculty, respectively.⁷ **FTES/FTEF:** A measurement of productivity where the generally accepted target is 17.5.⁸ **Success rate numerator:** Number of course enrollments with a successful passing grade (A,B,C,P/CR).**Retention rate numerator:** Number of course enrollments retained through the semester (grade = A,B,C,P/CR,D,F,NP/NC,I).**Success and Retention rate denominator:** Number of enrollments retained (A,B,C,P/CR,D,F,NP/NC,I), withdrawn (W), and dropped after Census Day (DR).