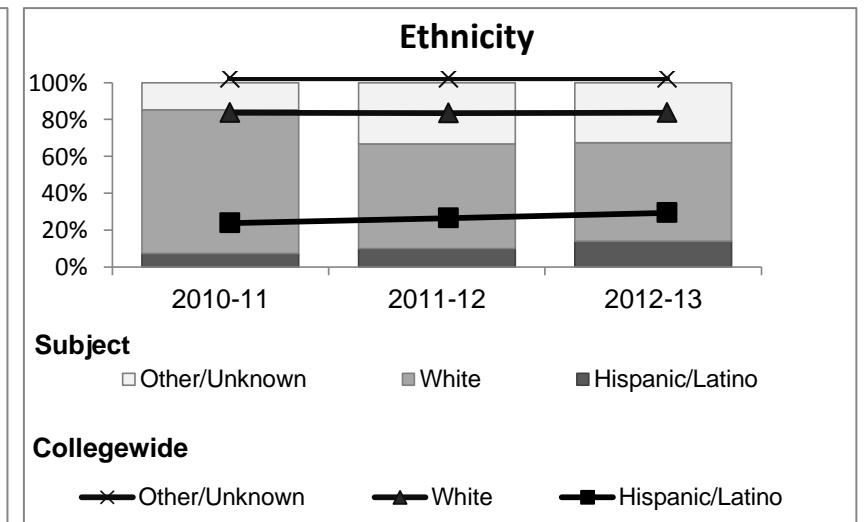
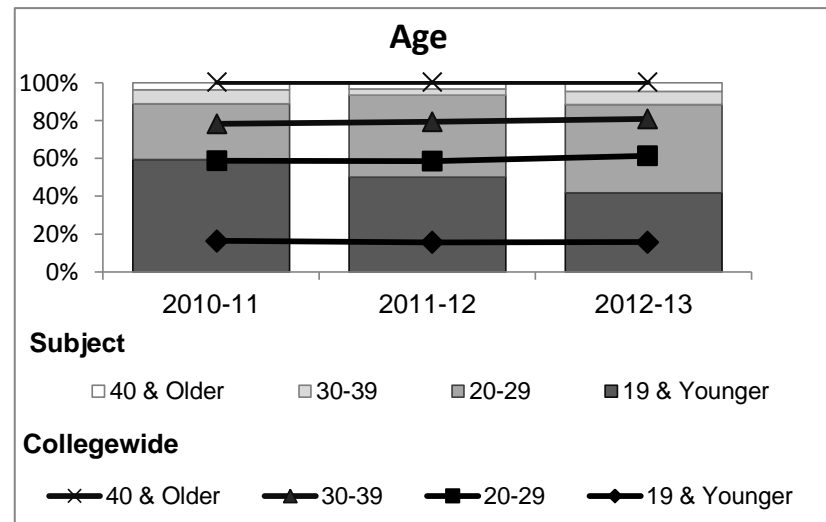
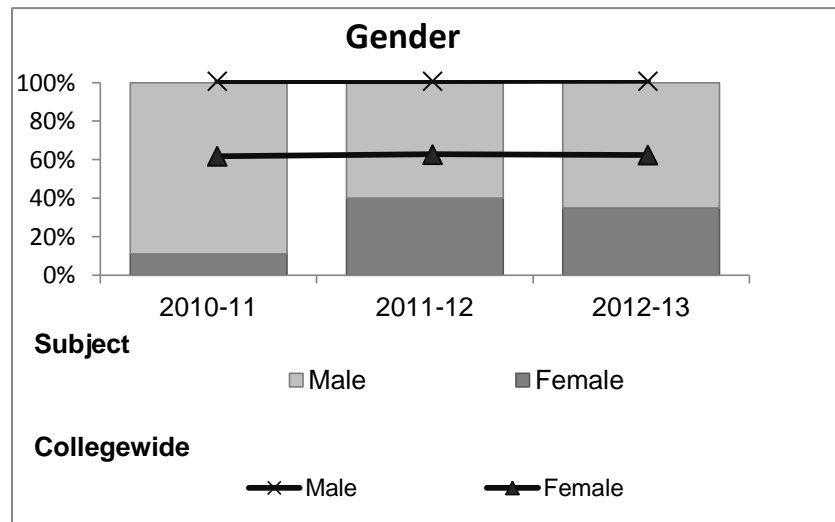


Physics

Student Demographic Information

Student Headcount	2008-09		2009-10		2010-11		2011-12		2012-13		2012-13	
	#	% change - Prior Yr	#	% change - Prior Yr	#	% change - Prior Yr	#	% change - Prior Yr	Subject		Collegewide	
									#	% change - Prior Yr	#	% change - Prior Yr
Unduplicated ²	35	--	36	3%	27	-25%	30	11%	43	43%	8,583	-16%

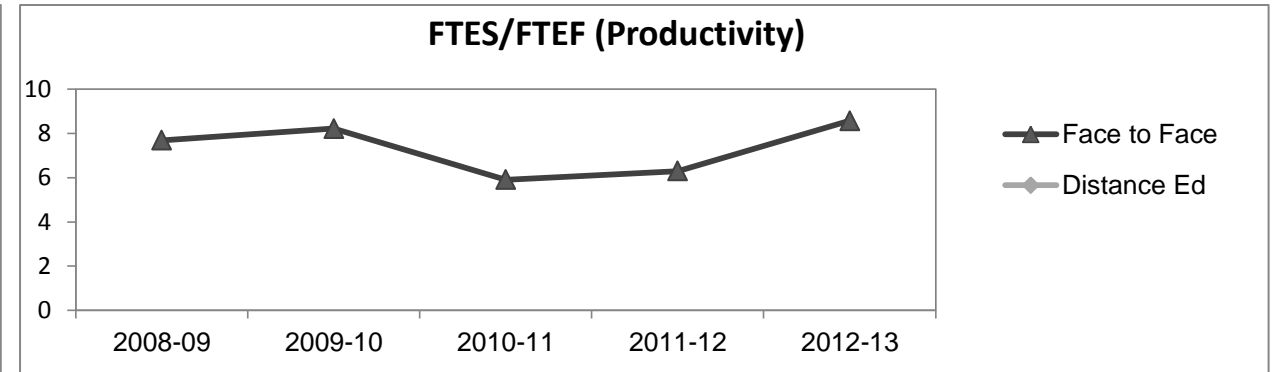
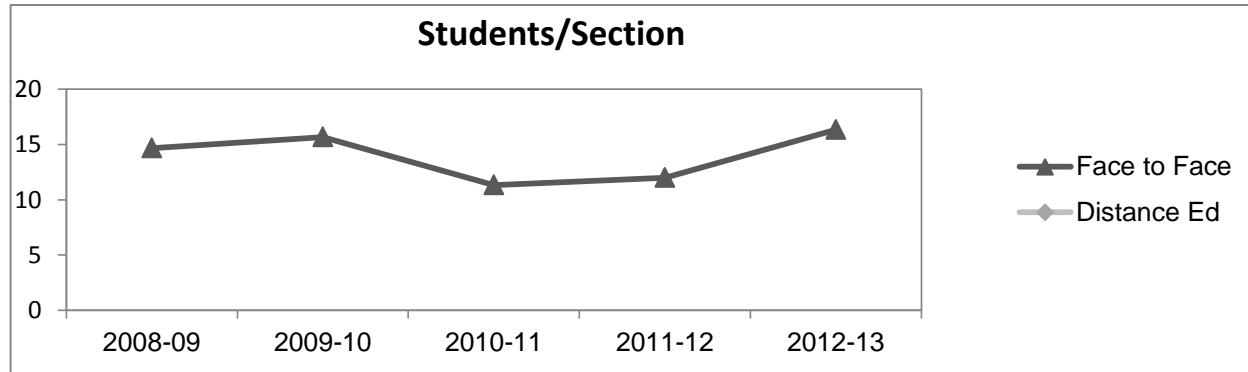
	2008-09		2009-10		2010-11		2011-12		2012-13		2012-13	
	#	%	#	%	#	%	#	%	Subject		Collegewide	
									#	%	#	%
Gender												
Female	8	23%	11	31%	3	11%	12	40%	15	35%	5,289	62%
Male	27	77%	25	69%	24	89%	18	60%	28	65%	3,283	38%
Unknown	0	0%	0	0%	0	0%	0	0%	0	0%	11	0%
Age												
19 & Younger	15	43%	14	39%	16	59%	15	50%	18	42%	1,298	15%
20-29	15	43%	18	50%	8	30%	13	43%	20	47%	3,929	46%
30-39	2	6%	1	3%	2	7%	1	3%	3	7%	1,671	19%
40 & Older	3	9%	3	8%	1	4%	1	3%	2	5%	1,685	20%
Ethnicity												
African American	0	0%	1	3%	0	0%	0	0%	2	5%	502	6%
American Indian	1	3%	0	0%	0	0%	0	0%	1	2%	177	2%
Asian/Filipino/Pac Islander	7	20%	6	17%	4	15%	6	20%	8	19%	416	5%
Hispanic/Latino	1	3%	5	14%	2	7%	3	10%	6	14%	2,554	30%
White	20	57%	21	58%	21	78%	17	57%	23	53%	4,480	52%
Two or more races	4	11%	2	6%	0	0%	4	13%	3	7%	413	5%
Unknown	2	6%	1	3%	0	0%	0	0%	0	0%	41	0%



Physics

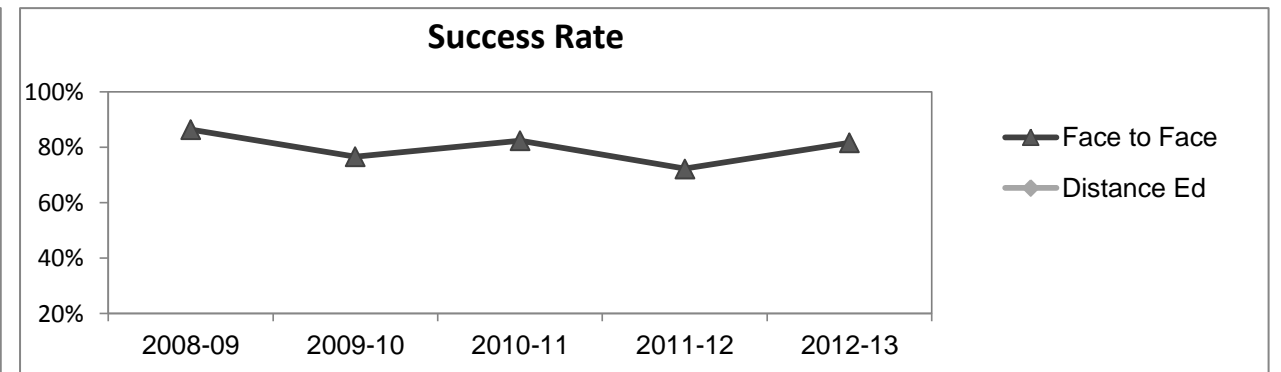
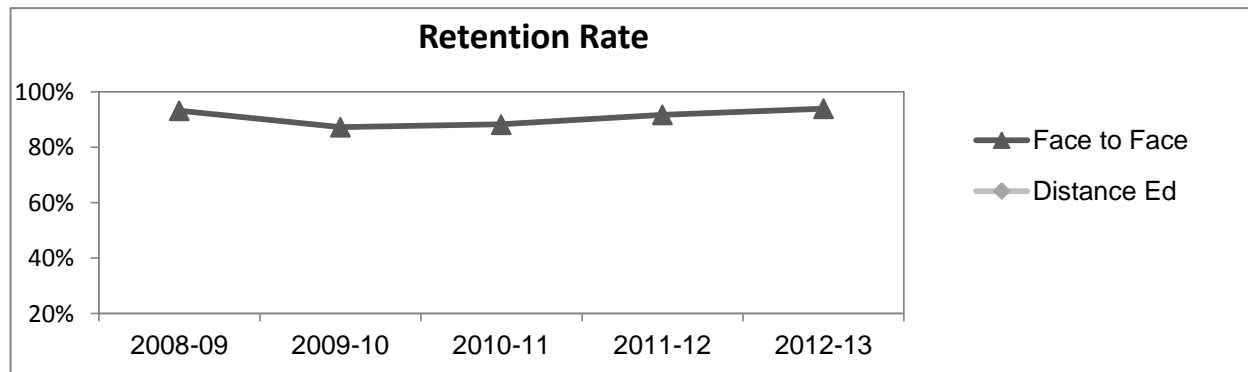
Course Enrollments - Productivity

	2008-09			2009-10			2010-11			2011-12			2012-13			2012-13		
	F-t-F ³	DE	Total	F-t-F ³	DE	Total	F-t-F ³	DE	Total	F-t-F ³	DE	Total	Subject			Collegewide		
	F-t-F ³	DE	Total	F-t-F ³	DE	Total	F-t-F ³	DE	Total	F-t-F ³	DE	Total	F-t-F ³	DE	Total	F-t-F ³	DE	Total
Number of Sections	3	0	3	3	0	3	3	0	3	3	0	3	3	0	3	511	519	1,030
Enrollment ⁴																		
Census	44	0	44	47	0	47	34	0	34	36	0	36	49	0	49	9,387	15,094	24,481
Students/Section ⁵	15		15	16		16	11		11	12		12	16		16	18	29	24
Productivity																		
FTES ⁶	12.3	0	12.3	13.1	0	13.1	9.4	0	9.4	10.1	0	10.1	13.7	0	13.7	1,368.1	1,573.3	2,941.4
FTEF ⁶	1.6	0	1.6	1.6	0	1.6	1.6	0	1.6	1.6	0	1.6	1.6	0	1.6	98.2	104.3	202.5
<i>Contract</i>			0%			0%			0%			0%			56%			38%
<i>Overload</i>			0%			0%			0%			0%			10%			12%
<i>Adjunct</i>			100%			100%			100%			100%			33%			36%
<i>Summer</i>			0%			0%			0%			0%			0%			14%
FTES/FTEF ⁷	7.7		7.7	8.2		8.2	5.9		5.9	6.3		6.3	8.6		8.6	13.9	15.1	14.5



Outcomes

	2008-09			2009-10			2010-11			2011-12			2012-13			2012-13		
	F-t-F ³	DE	Total	F-t-F ³	DE	Total	F-t-F ³	DE	Total	F-t-F ³	DE	Total	Subject			Collegewide		
	F-t-F ³	DE	Total	F-t-F ³	DE	Total	F-t-F ³	DE	Total	F-t-F ³	DE	Total	F-t-F ³	DE	Total	F-t-F ³	DE	Total
Retention Rate ⁸	93.2%		93.2%	87.2%		87.2%	88.2%		88.2%	91.7%		91.7%	93.9%		93.9%	90.1%	78.5%	83.0%
Success Rate ⁸	86.4%		86.4%	76.6%		76.6%	82.4%		82.4%	72.2%		72.2%	81.6%		81.6%	75.9%	61.0%	66.8%



Physics

Degrees - Certificates

													2012-13					
	2008-09			2009-10			2010-11			2011-12			Subject			Collegewide		
	AA	AS	CERT	AA	AS	CERT	AA	AS	CERT	AA	AS	CERT	AA	AS	CERT	AA	AS	CERT
Awards related to or contributed to by Science																		
Engineering Drafting Technlgy	0	0	0	0	0	0	0	1	0	0	0	0	0	0	0			
Engineering Technology	0	0	0	0	0	0	0	2	0	0	2	0	0	0	0			
Engineering, General	0	0	0	0	0	0	3	0	0	0	1	0	0	3	0			
General Science	0	0	0	6	0	0	4	0	0	2	0	0	5	0	0			
Pre-engineering	2	0	0	3	0	0	4	0	0	0	0	0	0	0	0			
Total Awards by Type	2	0	0	9	0	0	11	3	0	2	3	0	5	3	0	193	61	121
% of total awards by type	100%	0%	0%	100%	0%	0%	79%	21%	0%	40%	60%	0%	63%	38%	0%	51%	16%	32%
Total Awards	2			9			14			5			8			375		
Liberal Arts/Math & Science	3	0	0	14	0	0	21	0	0	23	0	0	44	0	0			
Physical Education	0	0	0	0	0	0	0	0	0	1	0	0	1	0	0			
Computer Science	0	0	0	0	0	0	0	0	0	0	0	0	0	1	0			
Mathematics	0	0	0	0	0	0	0	0	0	2	0	0	0	3	0			

Notes

¹ **Source:** ODS Reports (July, 2013)

² **Student Headcount, *Unduplicated*:** Number of students enrolled on census day, where each student is counted one time.

³ **F-t-F:** Face to Face instructional delivery mode.

⁴ **Enrollment:** Every course in which students are enrolled on census day.

⁵ **Students/Section:** Student enrollments per section on census day. Cross-listed sections are not combined.

⁶ Acronyms **FTES** and **FTEF** represent full-time equivalent students and full-time equivalent faculty, respectively.

⁷ **FTES/FTEF:** A measurement of productivity where the generally accepted target is 17.5.

⁸ **Success rate numerator:** Number of course enrollments with a successful passing grade (A,B,C,P/CR).

Retention rate numerator: Number of course enrollments retained through the semester (grade = A,B,C,P/CR,D,F,NP/NC,I).

Success and Retention rate denominator: Number of enrollments retained (A,B,C,P/CR,D,F,NP/NC,I), withdrawn (W), and dropped after Census Day (DR).