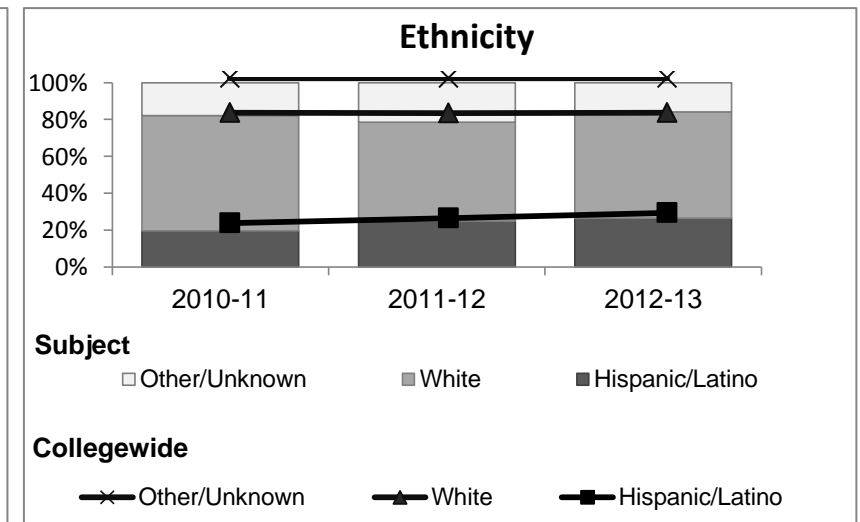
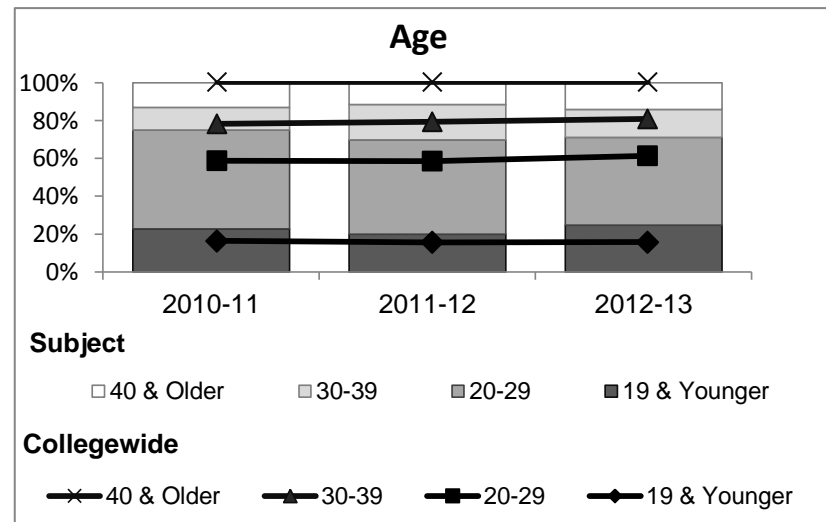
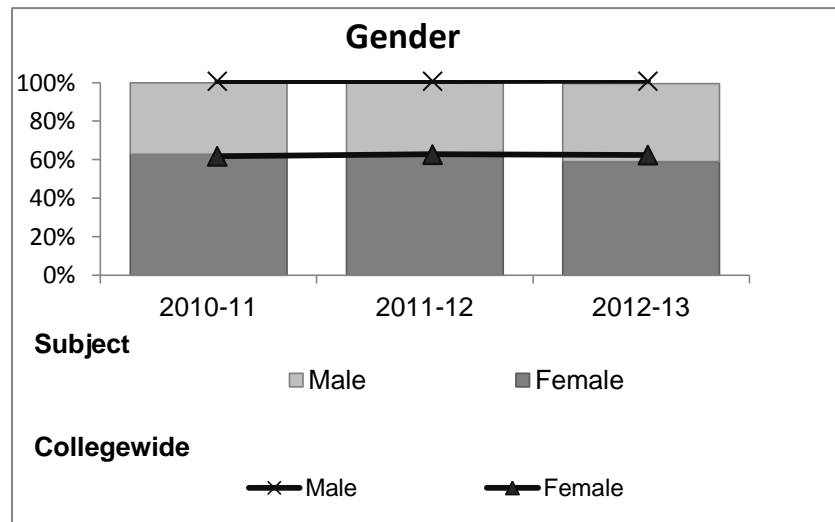


Philosophy

Student Demographic Information

Student Headcount	2008-09		2009-10		2010-11		2011-12		2012-13		2012-13	
	#	% change - Prior Yr	#	% change - Prior Yr	#	% change - Prior Yr	#	% change - Prior Yr	Subject		Collegewide	
									#	% change - Prior Yr	#	% change - Prior Yr
Unduplicated ²	523	--	519	-1%	557	7%	572	3%	400	-30%	8,583	-16%

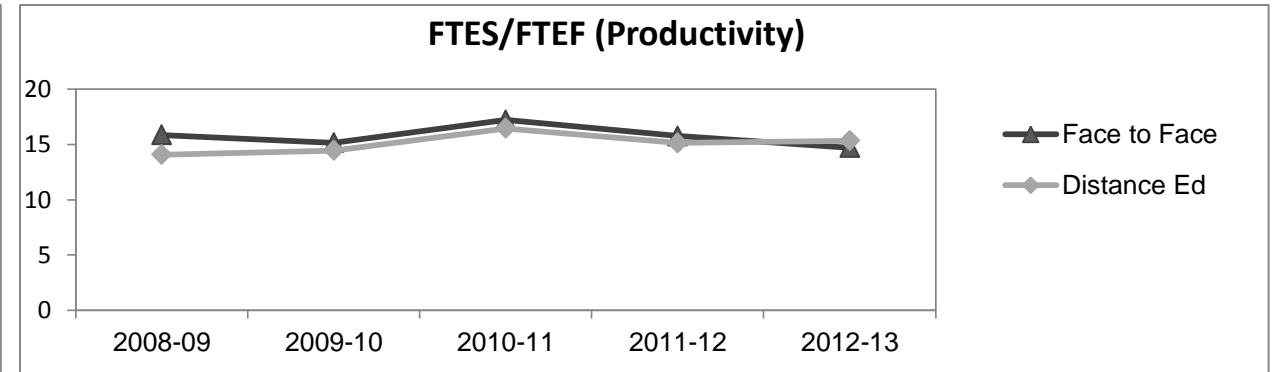
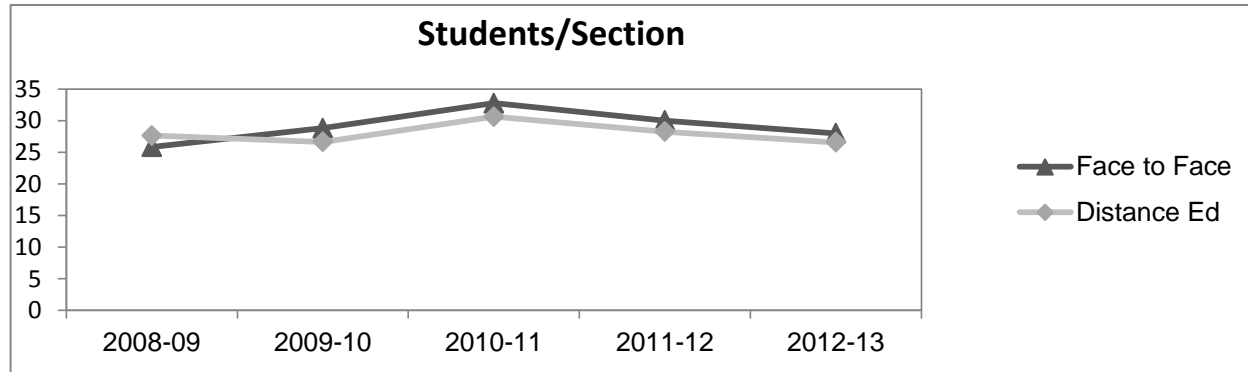
	2008-09		2009-10		2010-11		2011-12		2012-13		2012-13	
	#	%	#	%	#	%	#	%	Subject		Collegewide	
									#	%	#	%
Gender												
Female	311	59%	331	64%	350	63%	353	62%	236	59%	5,289	62%
Male	212	41%	188	36%	206	37%	219	38%	162	41%	3,283	38%
Unknown	0	0%	0	0%	1	0%	0	0%	2	1%	11	0%
Age												
19 & Younger	133	25%	129	25%	127	23%	114	20%	99	25%	1,298	15%
20-29	222	42%	251	48%	290	52%	285	50%	185	46%	3,929	46%
30-39	90	17%	66	13%	67	12%	107	19%	59	15%	1,671	19%
40 & Older	78	15%	73	14%	73	13%	66	12%	57	14%	1,685	20%
Ethnicity												
African American	30	6%	22	4%	27	5%	35	6%	12	3%	502	6%
American Indian	14	3%	14	3%	7	1%	5	1%	8	2%	177	2%
Asian/Filipino/Pac Islander	23	4%	33	6%	30	5%	52	9%	18	5%	416	5%
Hispanic/Latino	74	14%	76	15%	109	20%	142	25%	106	27%	2,554	30%
White	351	67%	348	67%	348	62%	307	54%	230	58%	4,480	52%
Two or more races	12	2%	18	3%	36	6%	30	5%	26	7%	413	5%
Unknown	19	4%	8	2%	0	0%	1	0%	0	0%	41	0%



Philosophy

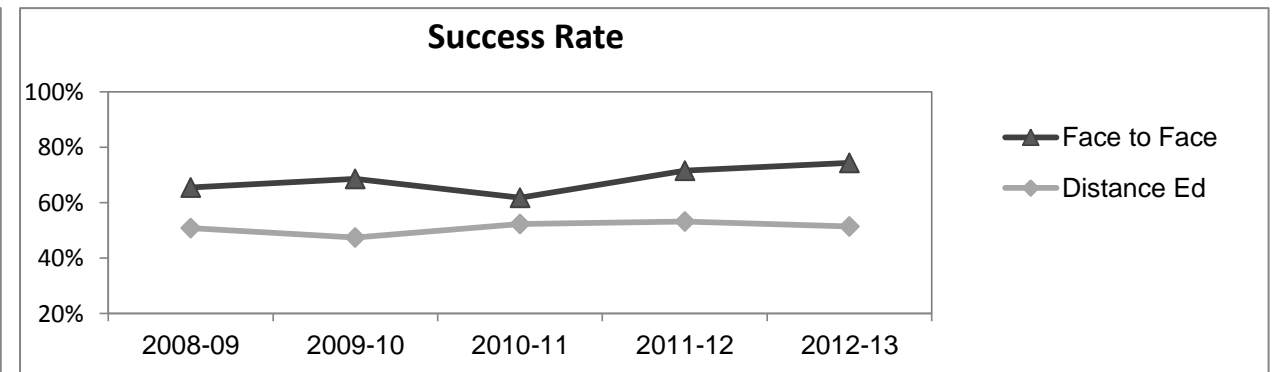
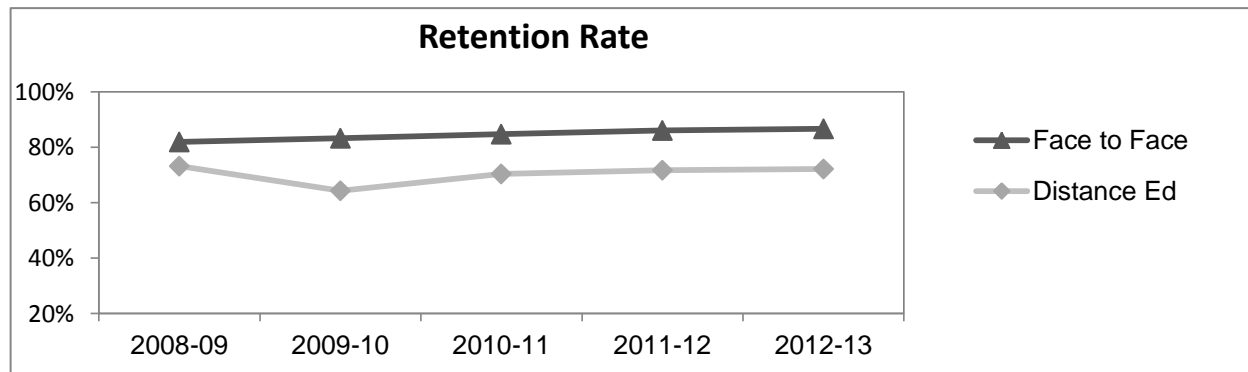
Course Enrollments - Productivity

	2008-09			2009-10			2010-11			2011-12			2012-13			2012-13		
	F-t-F ³	DE	Total	F-t-F ³	DE	Total	F-t-F ³	DE	Total	F-t-F ³	DE	Total	Subject			Collegewide		
	F-t-F ³	DE	Total	F-t-F ³	DE	Total	F-t-F ³	DE	Total	F-t-F ³	DE	Total	F-t-F ³	DE	Total	F-t-F ³	DE	Total
Number of Sections	7	14	21	5	16	21	4	16	20	5	16	21	4	12	16	511	519	1,030
Enrollment ⁴																		
Census	181	387	568	144	426	570	131	490	621	150	452	602	112	319	431	9,387	15,094	24,481
Students/Section ⁵	26	28	27	29	27	27	33	31	31	30	28	29	28	27	27	18	29	24
Productivity																		
FTES ⁶	19.0	38.4	57.5	15.1	43.3	58.4	13.8	50.4	64.1	15.8	46.3	62.1	11.8	30.7	42.4	1,368.1	1,573.3	2,941.4
FTEF ⁶	1.2	2.7	3.9	1.0	3.0	4.0	0.8	3.1	3.9	1.0	3.1	4.1	0.8	2.0	2.8	98.2	104.3	202.5
Contract			27%			30%			36%			13%			0%			38%
Overload			7%			0%			0%			0%			0%			12%
Adjunct			46%			50%			36%			54%			71%			36%
Summer			20%			20%			28%			33%			29%			14%
FTES/FTEF ⁷	15.8	14.1	14.6	15.1	14.4	14.6	17.2	16.4	16.6	15.8	15.1	15.3	14.7	15.3	15.2	13.9	15.1	14.5



Outcomes

	2008-09			2009-10			2010-11			2011-12			2012-13			2012-13		
	F-t-F ³	DE	Total	F-t-F ³	DE	Total	F-t-F ³	DE	Total	F-t-F ³	DE	Total	Subject			Collegewide		
	F-t-F ³	DE	Total	F-t-F ³	DE	Total	F-t-F ³	DE	Total	F-t-F ³	DE	Total	F-t-F ³	DE	Total	F-t-F ³	DE	Total
Retention Rate ⁸	81.9%	73.2%	76.1%	83.2%	64.3%	69.1%	84.7%	70.4%	73.4%	86.1%	71.7%	75.3%	86.7%	72.1%	75.9%	90.1%	78.5%	83.0%
Success Rate ⁸	65.5%	50.8%	55.6%	68.5%	47.4%	52.7%	61.8%	52.3%	54.3%	71.5%	53.2%	57.8%	74.3%	51.4%	57.4%	75.9%	61.0%	66.8%



Philosophy

Degrees - Certificates

													2012-13					
	2008-09			2009-10			2010-11			2011-12			Subject			Collegewide		
	AA	AS	CERT	AA	AS	CERT	AA	AS	CERT	AA	AS	CERT	AA	AS	CERT	AA	AS	CERT
Awards related to or contributed to by Social Science																		
Social Science	30	0	0	21	0	0	13	0	0	1	0	0	3	0	0			
Humanities	3	0	0	3	0	0	3	0	0	0	0	0	0	0	0			
Total Awards by Type	33	0	0	24	0	0	16	0	0	1	0	0	3	0	0	193	61	121
% of total awards by type	100%	0%	0%	100%	0%	0%	100%	0%	0%	100%	0%	0%	100%	0%	0%	51%	16%	32%
Total Awards	33			24			16			1			3			375		
Liberal Arts/Social & Behvrl	28	0	0	24	0	0	79	0	0	58	0	0	62	0	0			
Liberal Arts/Math & Science	3	0	0	14	0	0	21	0	0	23	0	0	44	0	0			
Business Administration	2	9	3	13	7	1	19	7	1	23	3	0	24	1	0			
Liberal Arts/Arts & Humanities	3	0	0	13	0	0	33	0	0	37	0	0	42	0	0			
Human Services	0	0	0	0	6	0	0	5	0	0	8	0	0	6	0			
Human Services Worker	0	0	0	0	0	1	0	0	3	0	0	8	0	0	9			
Administration of Justice	0	7	7	0	12	6	0	17	6	0	2	3	0	6	3			

Notes

¹ **Source:** ODS Reports (July, 2013)

² **Student Headcount, *Unduplicated*:** Number of students enrolled on census day, where each student is counted one time.

³ **F-t-F:** Face to Face instructional delivery mode.

⁴ **Enrollment:** Every course in which students are enrolled on census day.

⁵ **Students/Section:** Student enrollments per section on census day. Cross-listed sections are not combined.

⁶ Acronyms **FTES** and **FTEF** represent full-time equivalent students and full-time equivalent faculty, respectively.

⁷ **FTES/FTEF:** A measurement of productivity where the generally accepted target is 17.5.

⁸ **Success rate numerator:** Number of course enrollments with a successful passing grade (A,B,C,P/CR).

Retention rate numerator: Number of course enrollments retained through the semester (grade = A,B,C,P/CR,D,F,NP/NC,I).

Success and Retention rate denominator: Number of enrollments retained (A,B,C,P/CR,D,F,NP/NC,I), withdrawn (W), and dropped after Census Day (DR).