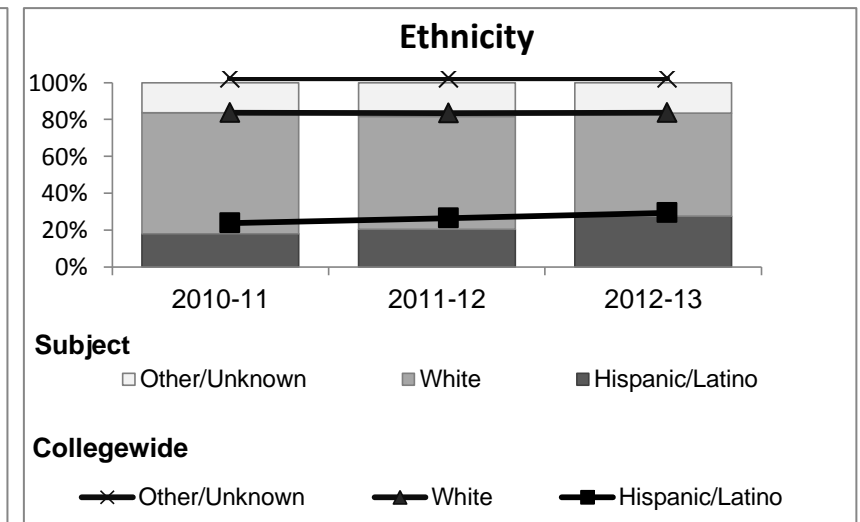
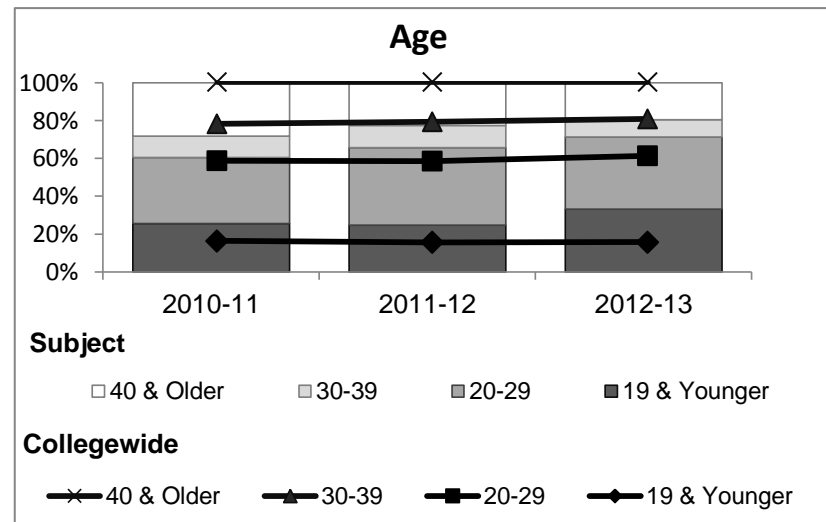
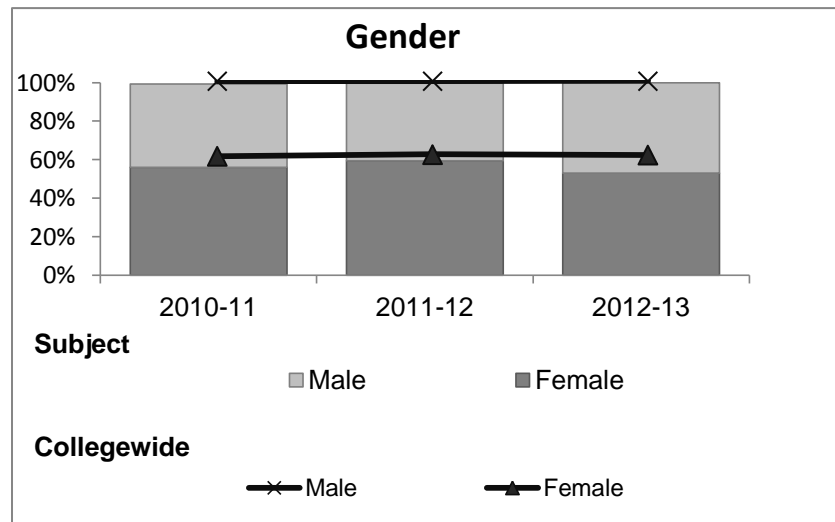


Physical Education

Student Demographic Information

Student Headcount	2008-09		2009-10		2010-11		2011-12		2012-13		2012-13	
	#	% change - Prior Yr	#	% change - Prior Yr	#	% change - Prior Yr	#	% change - Prior Yr	Subject		Collegewide	
									#	% change - Prior Yr	#	% change - Prior Yr
Unduplicated ²	1,244	--	1,165	-6%	933	-20%	723	-23%	622	-14%	8,583	-16%

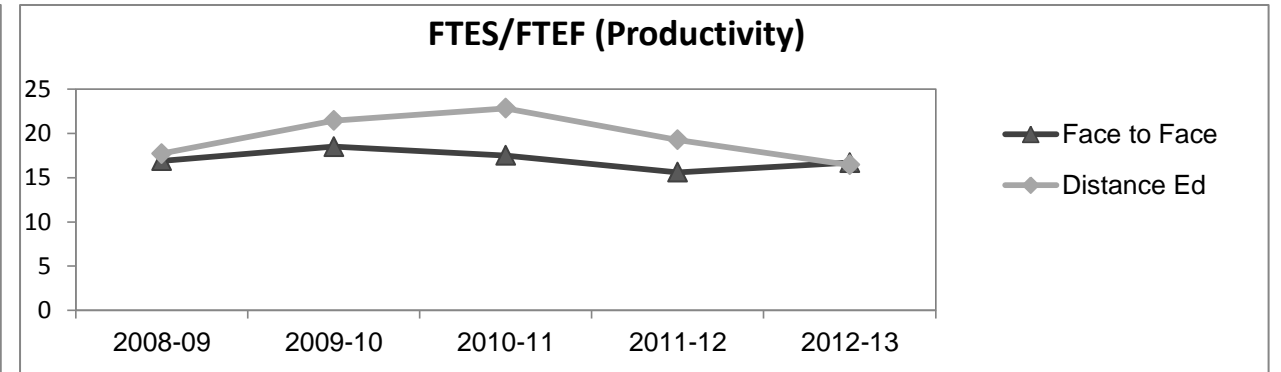
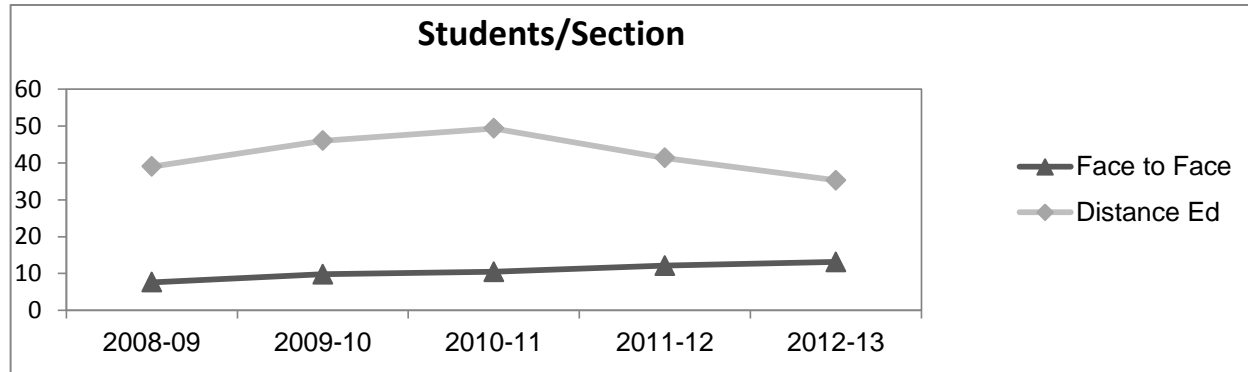
	2008-09		2009-10		2010-11		2011-12		2012-13		2012-13	
	#	%	#	%	#	%	#	%	Subject		Collegewide	
									#	%	#	%
Gender												
Female	721	58%	640	55%	522	56%	430	59%	330	53%	5,289	62%
Male	517	42%	519	45%	404	43%	291	40%	292	47%	3,283	38%
Unknown	6	0%	6	1%	7	1%	2	0%	0	0%	11	0%
Age												
19 & Younger	328	26%	310	27%	238	26%	178	25%	206	33%	1,298	15%
20-29	318	26%	333	29%	325	35%	296	41%	237	38%	3,929	46%
30-39	115	9%	106	9%	107	11%	86	12%	57	9%	1,671	19%
40 & Older	481	39%	415	36%	263	28%	163	23%	122	20%	1,685	20%
Ethnicity												
African American	50	4%	56	5%	50	5%	47	7%	35	6%	502	6%
American Indian	36	3%	24	2%	22	2%	19	3%	8	1%	177	2%
Asian/Filipino/Pac Islander	53	4%	39	3%	32	3%	33	5%	14	2%	416	5%
Hispanic/Latino	142	11%	162	14%	168	18%	148	20%	172	28%	2,554	30%
White	901	72%	829	71%	613	66%	443	61%	347	56%	4,480	52%
Two or more races	29	2%	32	3%	47	5%	31	4%	46	7%	413	5%
Unknown	33	3%	23	2%	1	0%	2	0%	0	0%	41	0%



Physical Education

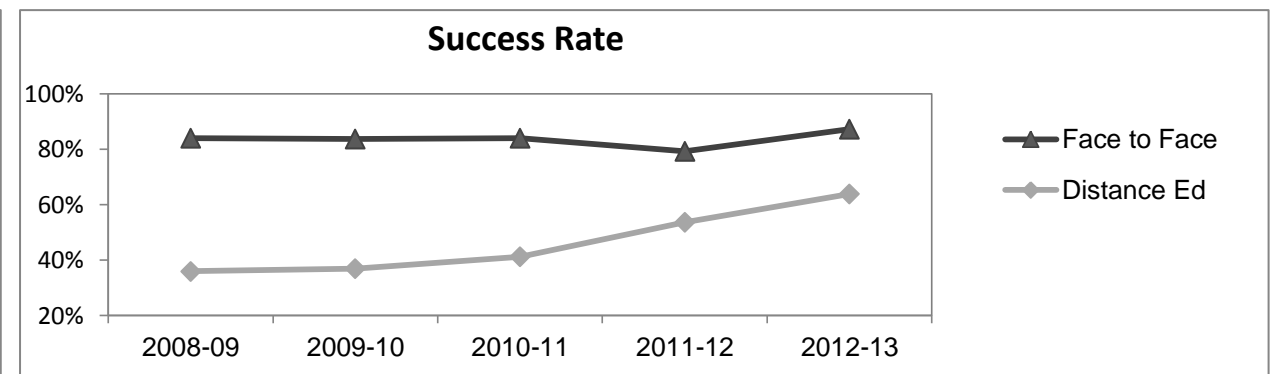
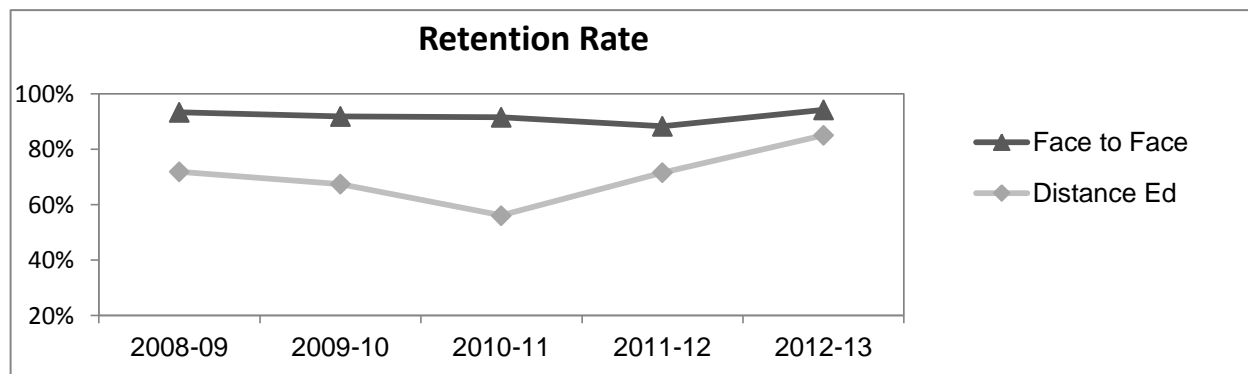
Course Enrollments - Productivity

	2008-09			2009-10			2010-11			2011-12			2012-13			2012-13		
	F-t-F ³	DE	Total	F-t-F ³	DE	Total	F-t-F ³	DE	Total	F-t-F ³	DE	Total	Subject			Collegewide		
	F-t-F ³	DE	Total	F-t-F ³	DE	Total	F-t-F ³	DE	Total	F-t-F ³	DE	Total	F-t-F ³	DE	Total	F-t-F ³	DE	Total
Number of Sections	296	2	298	191	2	193	134	3	137	76	3	79	59	4	63	511	519	1,030
Enrollment ⁴																		
Census	2,260	78	2,338	1,874	92	1,966	1,404	148	1,552	925	124	1,049	777	141	918	9,387	15,094	24,481
Students/Section ⁵	8	39	8	10	46	10	10	49	11	12	41	13	13	35	15	18	29	24
Productivity																		
FTES ⁶	248.7	7.1	255.8	217.5	8.6	226.1	166.2	13.7	179.9	108.0	11.5	119.6	98.3	13.1	111.4	1,368.1	1,573.3	2,941.4
FTEF ⁶	14.7	0.4	15.1	11.8	0.4	12.2	9.5	0.6	10.1	6.9	0.6	7.5	5.9	0.8	6.7	98.2	104.3	202.5
<i>Contract</i>			42%			43%			47%			45%			41%			38%
<i>Overload</i>			5%			0%			0%			0%			10%			12%
<i>Adjunct</i>			38%			39%			45%			42%			38%			36%
<i>Summer</i>			15%			18%			8%			13%			12%			14%
FTES/FTEF ⁷	16.9	17.7	16.9	18.5	21.4	18.6	17.5	22.8	17.8	15.6	19.2	15.9	16.7	16.4	16.7	13.9	15.1	14.5



Outcomes

	2008-09			2009-10			2010-11			2011-12			2012-13			2012-13		
	F-t-F ³	DE	Total	F-t-F ³	DE	Total	F-t-F ³	DE	Total	F-t-F ³	DE	Total	Subject			Collegewide		
	F-t-F ³	DE	Total	F-t-F ³	DE	Total	F-t-F ³	DE	Total	F-t-F ³	DE	Total	F-t-F ³	DE	Total	F-t-F ³	DE	Total
Retention Rate ⁸	93.3%	71.8%	92.6%	91.9%	67.4%	90.7%	91.6%	56.1%	88.2%	88.3%	71.5%	86.3%	94.3%	85.1%	92.9%	90.1%	78.5%	83.0%
Success Rate ⁸	83.9%	35.9%	82.2%	83.7%	36.8%	81.5%	84.0%	41.2%	79.9%	79.2%	53.7%	76.2%	87.3%	63.8%	83.6%	75.9%	61.0%	66.8%



Physical Education

Degrees - Certificates

													2012-13					
	2008-09			2009-10			2010-11			2011-12			Subject			Collegewide		
	AA	AS	CERT	AA	AS	CERT	AA	AS	CERT	AA	AS	CERT	AA	AS	CERT	AA	AS	CERT
Awards related to or contributed to by Kinesiology																		
Physical Education	0	0	0	0	0	0	0	0	0	1	0	0	1	0	0			
Total Awards by Type	0	0	0	0	0	0	0	0	0	1	0	0	1	0	0	193	61	121
% of total awards by type										100%	0%	0%	100%	0%	0%	51%	16%	32%
Total Awards	0			0			0			1			1			375		

Notes

¹ **Source:** ODS Reports (July, 2013)

² **Student Headcount, *Unduplicated*:** Number of students enrolled on census day, where each student is counted one time.

³ **F-t-F:** Face to Face instructional delivery mode.

⁴ **Enrollment:** Every course in which students are enrolled on census day.

⁵ **Students/Section:** Student enrollments per section on census day. Cross-listed sections are not combined.

⁶ Acronyms **FTES** and **FTEF** represent full-time equivalent students and full-time equivalent faculty, respectively.

⁷ **FTES/FTEF:** A measurement of productivity where the generally accepted target is 17.5.

⁸ **Success rate numerator:** Number of course enrollments with a successful passing grade (A,B,C,P/CR).

Retention rate numerator: Number of course enrollments retained through the semester (grade = A,B,C,P/CR,D,F,NP/NC,I).

Success and Retention rate denominator: Number of enrollments retained (A,B,C,P/CR,D,F,NP/NC,I), withdrawn (W), and dropped after Census Day (DR).