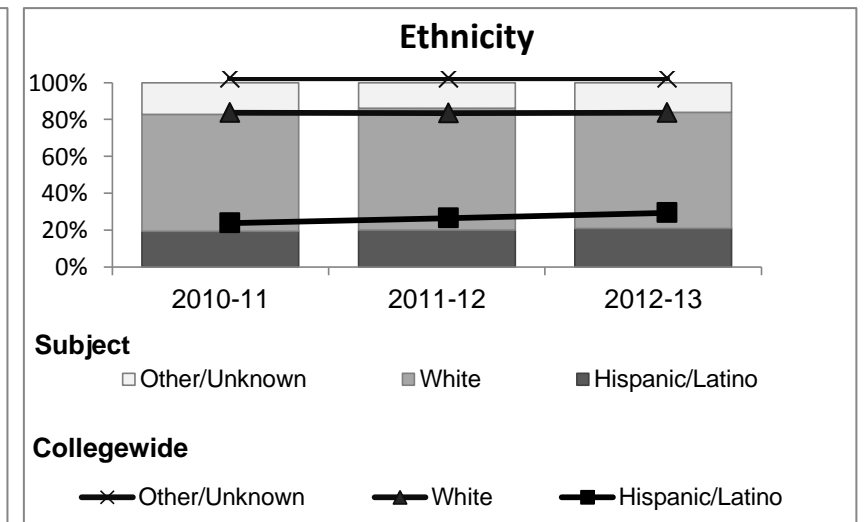
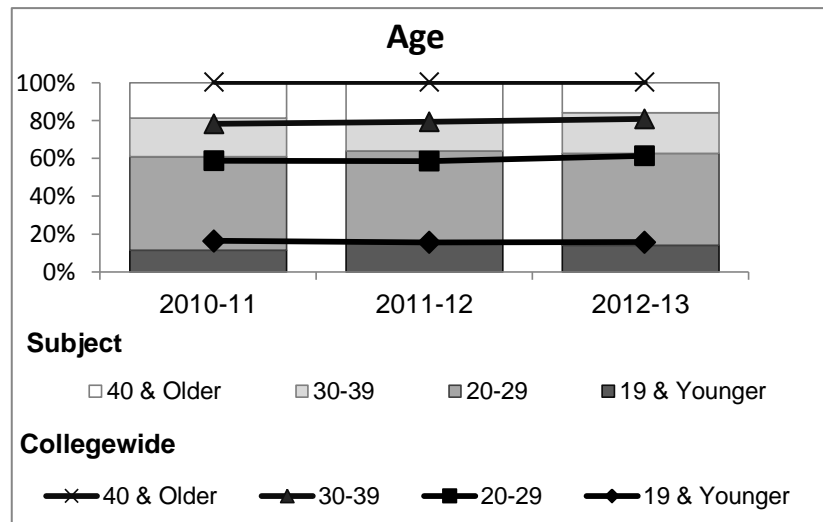
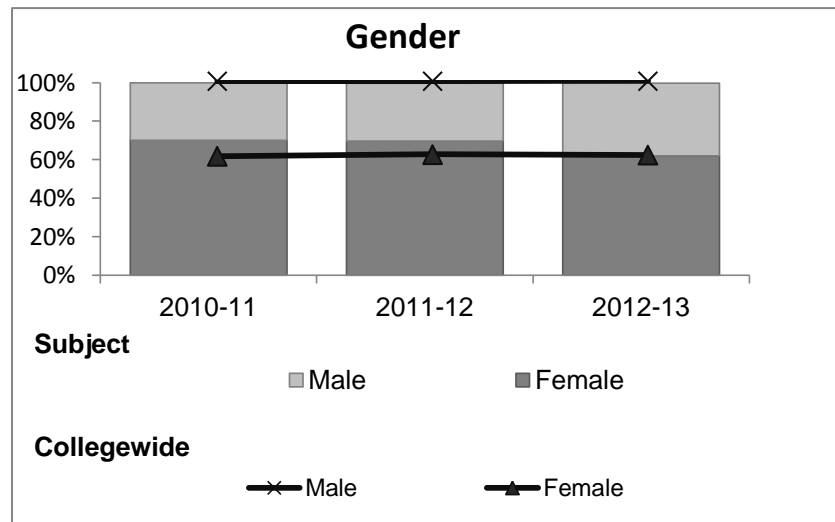


Information Competency

Student Demographic Information

Student Headcount	2008-09		2009-10		2010-11		2011-12		2012-13		2012-13	
	#	% change - Prior Yr	#	% change - Prior Yr	#	% change - Prior Yr	#	% change - Prior Yr	Subject		Collegewide	
									#	% change - Prior Yr	#	% change - Prior Yr
Unduplicated ²	348	--	386	11%	393	2%	373	-5%	353	-5%	8,583	-16%

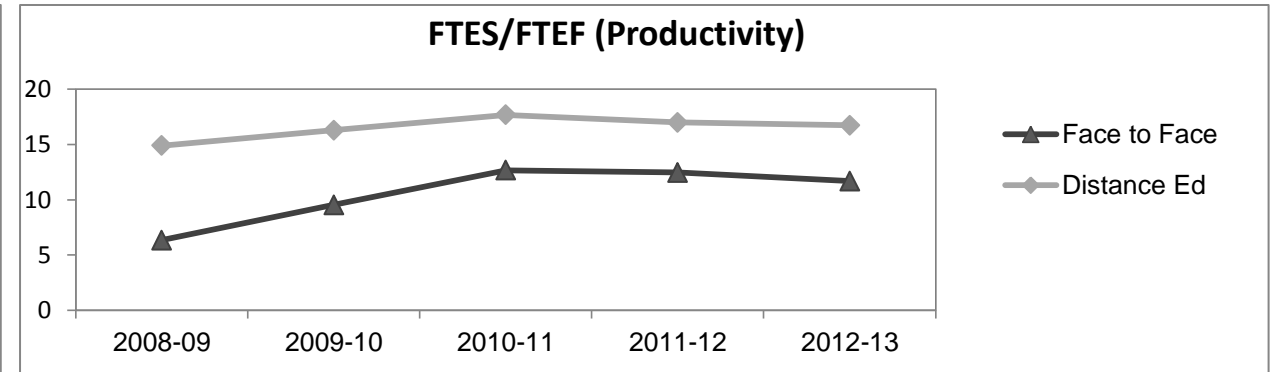
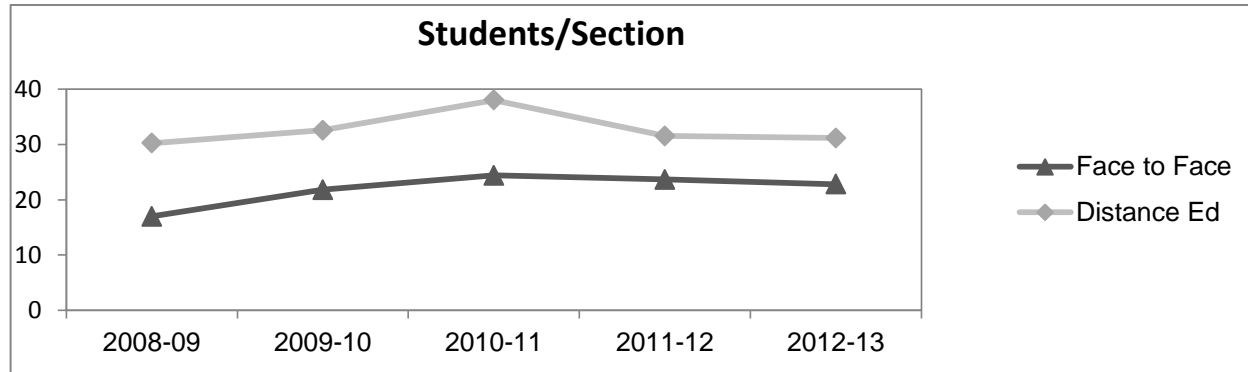
	2008-09		2009-10		2010-11		2011-12		2012-13		2012-13	
	#	%	#	%	#	%	#	%	Subject		Collegewide	
									#	%	#	%
Gender												
Female	224	64%	266	69%	275	70%	260	70%	219	62%	5,289	62%
Male	124	36%	120	31%	118	30%	112	30%	133	38%	3,283	38%
Unknown	0	0%	0	0%	0	0%	1	0%	1	0%	11	0%
Age												
19 & Younger	63	18%	69	18%	45	11%	59	16%	50	14%	1,298	15%
20-29	138	40%	157	41%	194	49%	179	48%	171	48%	3,929	46%
30-39	67	19%	73	19%	80	20%	58	16%	76	22%	1,671	19%
40 & Older	80	23%	87	23%	74	19%	77	21%	56	16%	1,685	20%
Ethnicity												
African American	16	5%	17	4%	15	4%	13	3%	14	4%	502	6%
American Indian	16	5%	21	5%	19	5%	13	3%	11	3%	177	2%
Asian/Filipino/Pac Islander	12	3%	13	3%	14	4%	12	3%	10	3%	416	5%
Hispanic/Latino	57	16%	48	12%	76	19%	75	20%	74	21%	2,554	30%
White	230	66%	272	70%	249	63%	246	66%	222	63%	4,480	52%
Two or more races	9	3%	12	3%	19	5%	14	4%	22	6%	413	5%
Unknown	8	2%	3	1%	1	0%	0	0%	0	0%	41	0%



Information Competency

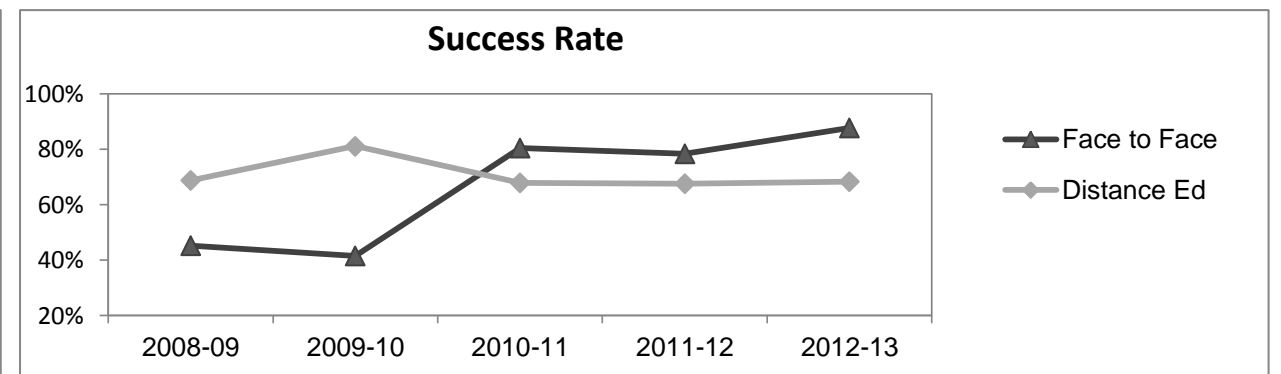
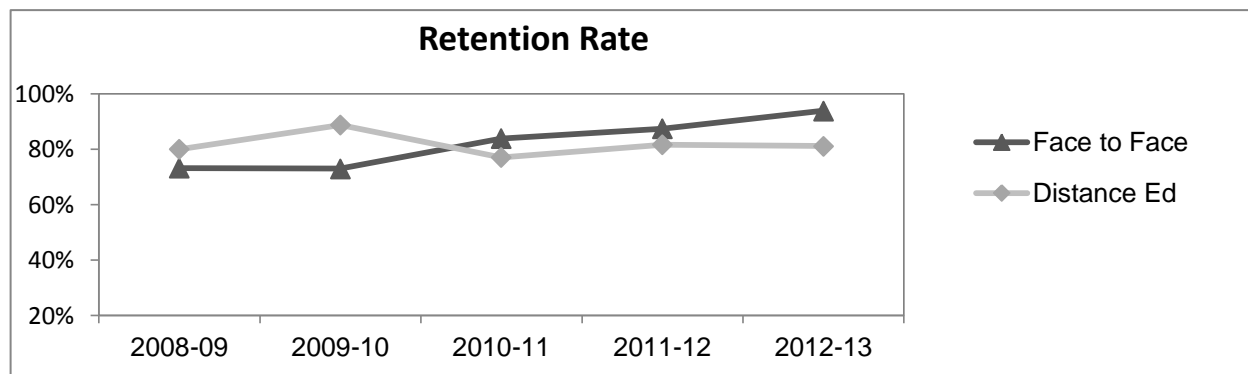
Course Enrollments - Productivity

	2008-09			2009-10			2010-11			2011-12			2012-13			2012-13		
	F-t-F ³	DE	Total	F-t-F ³	DE	Total	F-t-F ³	DE	Total	F-t-F ³	DE	Total	Subject			Collegewide		
	F-t-F ³	DE	Total	F-t-F ³	DE	Total	F-t-F ³	DE	Total	F-t-F ³	DE	Total	F-t-F ³	DE	Total	F-t-F ³	DE	Total
Number of Sections	5	9	14	5	9	14	5	8	13	6	8	14	5	8	13	511	519	1,030
Enrollment ⁴																		
Census	85	272	357	109	293	402	122	304	426	142	252	394	114	249	363	9,387	15,094	24,481
Students/Section ⁵	17	30	26	22	33	29	24	38	33	24	32	28	23	31	28	18	29	24
Productivity																		
FTES ⁶	2.1	8.0	10.1	3.2	8.7	11.9	4.2	9.5	13.7	5.0	7.9	12.9	3.9	7.8	11.7	1,368.1	1,573.3	2,941.4
FTEF ⁶	0.3	0.5	0.9	0.3	0.5	0.9	0.3	0.5	0.9	0.4	0.5	0.9	0.3	0.5	0.8	98.2	104.3	202.5
Contract			0%			0%			0%			0%			0%			38%
Overload			31%			31%			15%			8%			8%			12%
Adjunct			54%			46%			69%			77%			75%			36%
Summer			15%			23%			15%			15%			17%			14%
FTES/FTEF ⁷	6.3	14.9	11.6	9.5	16.3	13.7	12.7	17.7	15.7	12.5	17.0	14.9	11.7	16.7	14.6	13.9	15.1	14.5



Outcomes

	2008-09			2009-10			2010-11			2011-12			2012-13			2012-13		
	F-t-F ³	DE	Total	F-t-F ³	DE	Total	F-t-F ³	DE	Total	F-t-F ³	DE	Total	Subject			Collegewide		
	F-t-F ³	DE	Total	F-t-F ³	DE	Total	F-t-F ³	DE	Total	F-t-F ³	DE	Total	F-t-F ³	DE	Total	F-t-F ³	DE	Total
Retention Rate ⁸	73.2%	80.0%	78.5%	73.0%	88.8%	84.4%	83.9%	77.0%	79.0%	87.4%	81.6%	83.7%	93.9%	81.1%	85.1%	90.1%	78.5%	83.0%
Success Rate ⁸	45.1%	68.8%	63.5%	41.4%	81.1%	70.0%	80.5%	67.9%	71.4%	78.3%	67.6%	71.4%	87.7%	68.3%	74.4%	75.9%	61.0%	66.8%



Information Competency

Degrees - Certificates

										2012-13								
	2008-09			2009-10			2010-11			2011-12			Subject			Collegewide		
	AA	AS	CERT	AA	AS	CERT	AA	AS	CERT	AA	AS	CERT	AA	AS	CERT	AA	AS	CERT
* There are no awards associated with this Department or Subject																		
Total Awards by Type	0	0	0	0	0	0	0	0	0	0	0	0	0	0	0	193	61	121
% of total awards by type																51%	16%	32%
Total Awards	0			0			0			0			0			375		

Notes

- ¹ **Source:** ODS Reports (July, 2013)
- ² **Student Headcount, *Unduplicated*:** Number of students enrolled on census day, where each student is counted one time.
- ³ **F-t-F:** Face to Face instructional delivery mode.
- ⁴ **Enrollment:** Every course in which students are enrolled on census day.
- ⁵ **Students/Section:** Student enrollments per section on census day. Cross-listed sections are not combined.
- ⁶ Acronyms **FTES** and **FTEF** represent full-time equivalent students and full-time equivalent faculty, respectively.
- ⁷ **FTES/FTEF:** A measurement of productivity where the generally accepted target is 17.5.
- ⁸ **Success rate numerator:** Number of course enrollments with a successful passing grade (A,B,C,P/CR).
- Retention rate numerator:** Number of course enrollments retained through the semester (grade = A,B,C,P/CR,D,F,NP/NC,I).
- Success and Retention rate denominator:** Number of enrollments retained (A,B,C,P/CR,D,F,NP/NC,I), withdrawn (W), and dropped after Census Day (DR).