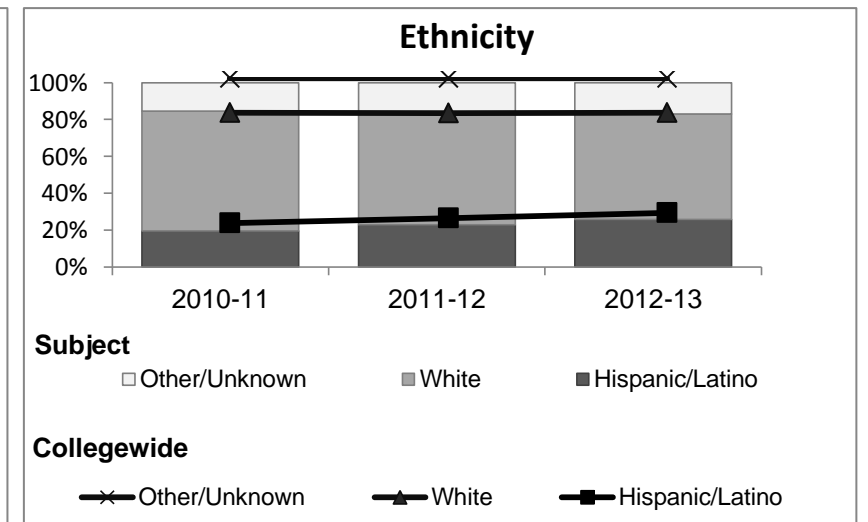
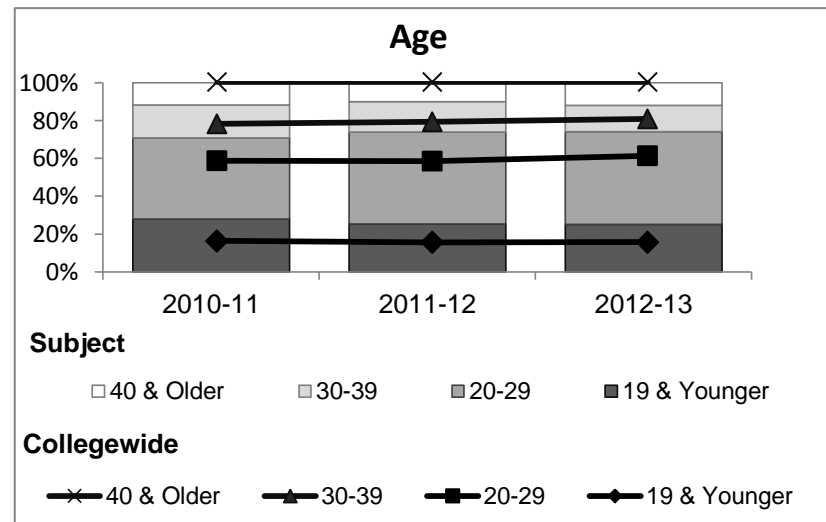
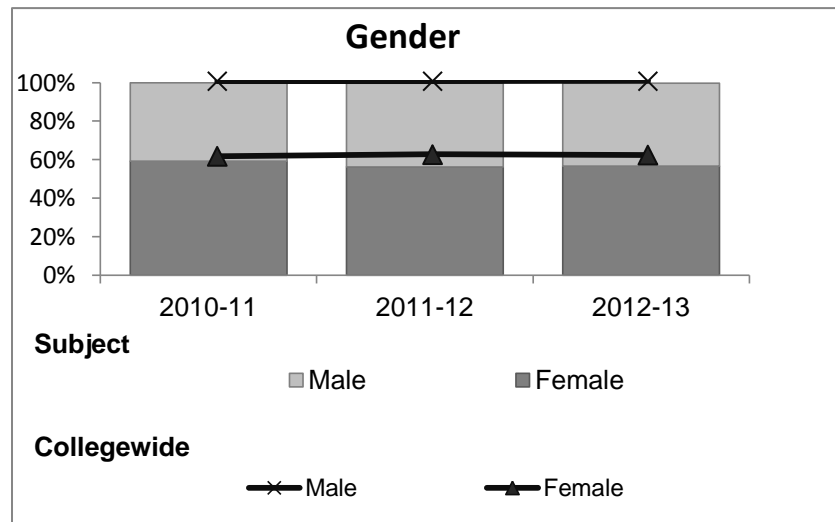


History

Student Demographic Information

Student Headcount	2008-09		2009-10		2010-11		2011-12		2012-13		2012-13	
	#	% change - Prior Yr	#	% change - Prior Yr	#	% change - Prior Yr	#	% change - Prior Yr	Subject		Collegewide	
									#	% change - Prior Yr	#	% change - Prior Yr
Unduplicated ²	959	--	905	-6%	1,067	18%	959	-10%	899	-6%	8,583	-16%

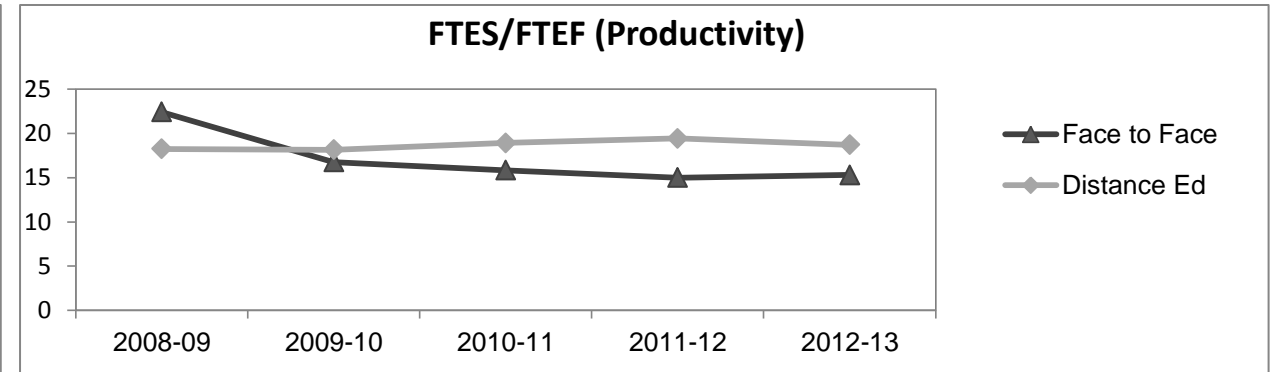
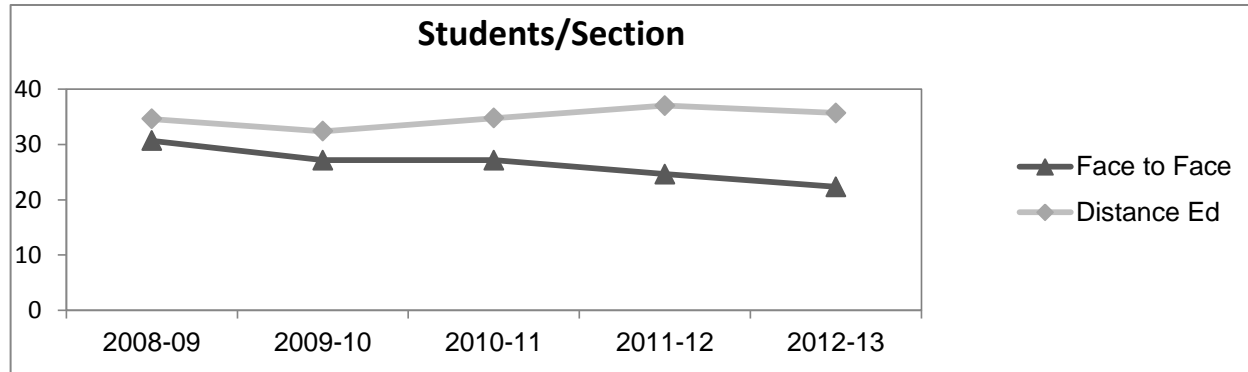
	2008-09		2009-10		2010-11		2011-12		2012-13		2012-13	
	#	%	#	%	#	%	#	%	Subject		Collegewide	
									#	%	#	%
Gender												
Female	547	57%	518	57%	631	59%	540	56%	509	57%	5,289	62%
Male	410	43%	382	42%	434	41%	415	43%	387	43%	3,283	38%
Unknown	2	0%	5	1%	2	0%	4	0%	3	0%	11	0%
Age												
19 & Younger	348	36%	297	33%	297	28%	243	25%	225	25%	1,298	15%
20-29	386	40%	398	44%	458	43%	466	49%	442	49%	3,929	46%
30-39	129	13%	109	12%	185	17%	153	16%	124	14%	1,671	19%
40 & Older	96	10%	101	11%	127	12%	97	10%	108	12%	1,685	20%
Ethnicity												
African American	27	3%	45	5%	42	4%	51	5%	45	5%	502	6%
American Indian	22	2%	13	1%	27	3%	15	2%	16	2%	177	2%
Asian/Filipino/Pac Islander	45	5%	37	4%	28	3%	33	3%	43	5%	416	5%
Hispanic/Latino	159	17%	154	17%	209	20%	220	23%	233	26%	2,554	30%
White	641	67%	601	66%	694	65%	585	61%	513	57%	4,480	52%
Two or more races	34	4%	40	4%	64	6%	55	6%	47	5%	413	5%
Unknown	31	3%	15	2%	3	0%	0	0%	2	0%	41	0%



History

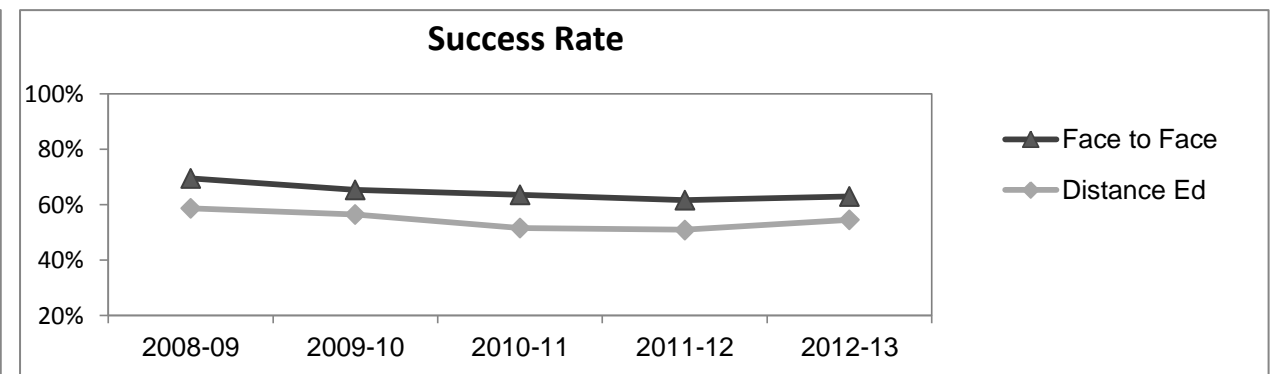
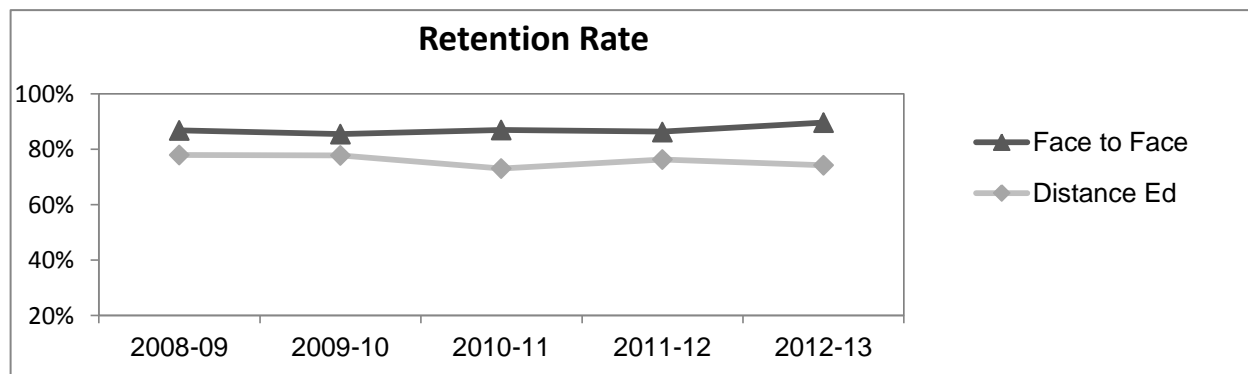
Course Enrollments - Productivity

	2008-09			2009-10			2010-11			2011-12			2012-13			2012-13		
	F-t-F ³	DE	Total	F-t-F ³	DE	Total	F-t-F ³	DE	Total	F-t-F ³	DE	Total	Subject			Collegewide		
	F-t-F ³	DE	Total	F-t-F ³	DE	Total	F-t-F ³	DE	Total	F-t-F ³	DE	Total	F-t-F ³	DE	Total	F-t-F ³	DE	Total
Number of Sections	15	19	34	14	20	34	15	23	38	13	20	33	13	20	33	511	519	1,030
Enrollment ⁴																		
Census	460	657	1,117	380	647	1,027	407	799	1,206	320	740	1,060	290	713	1,003	9,387	15,094	24,481
Students/Section ⁵	31	35	33	27	32	30	27	35	32	25	37	32	22	36	30	18	29	24
Productivity																		
FTES ⁶	50.1	62.0	112.1	42.5	61.7	104.2	43.3	75.6	118.9	35.0	69.9	104.9	31.6	67.4	99.0	1,368.1	1,573.3	2,941.4
FTEF ⁶	2.2	3.4	5.6	2.5	3.4	5.9	2.7	4.0	6.7	2.3	3.6	5.9	2.1	3.6	5.7	98.2	104.3	202.5
Contract			25%			20%			18%			24%			28%			38%
Overload			15%			0%			0%			0%			2%			12%
Adjunct			39%			63%			67%			63%			55%			36%
Summer			21%			17%			15%			13%			14%			14%
FTES/FTEF ⁷	22.4	18.2	19.9	16.8	18.1	17.6	15.8	18.9	17.7	15.0	19.4	17.7	15.3	18.7	17.5	13.9	15.1	14.5



Outcomes

	2008-09			2009-10			2010-11			2011-12			2012-13			2012-13		
	F-t-F ³	DE	Total	F-t-F ³	DE	Total	F-t-F ³	DE	Total	F-t-F ³	DE	Total	Subject			Collegewide		
	F-t-F ³	DE	Total	F-t-F ³	DE	Total	F-t-F ³	DE	Total	F-t-F ³	DE	Total	F-t-F ³	DE	Total	F-t-F ³	DE	Total
Retention Rate ⁸	86.9%	77.9%	81.7%	85.5%	77.8%	80.7%	86.9%	73.0%	77.7%	86.3%	76.2%	79.3%	89.6%	74.2%	78.6%	90.1%	78.5%	83.0%
Success Rate ⁸	69.5%	58.6%	63.2%	65.4%	56.4%	59.8%	63.5%	51.5%	55.6%	61.7%	50.9%	54.1%	63.0%	54.6%	57.0%	75.9%	61.0%	66.8%



History

Degrees - Certificates

													2012-13					
	2008-09			2009-10			2010-11			2011-12			Subject			Collegewide		
	AA	AS	CERT	AA	AS	CERT	AA	AS	CERT	AA	AS	CERT	AA	AS	CERT	AA	AS	CERT
Awards related to or contributed to by Social Science																		
Social Science	30	0	0	21	0	0	13	0	0	1	0	0	3	0	0			
Humanities	3	0	0	3	0	0	3	0	0	0	0	0	0	0	0			
Total Awards by Type	33	0	0	24	0	0	16	0	0	1	0	0	3	0	0	193	61	121
% of total awards by type	100%	0%	0%	100%	0%	0%	100%	0%	0%	100%	0%	0%	100%	0%	0%	51%	16%	32%
Total Awards	33			24			16			1			3			375		
Liberal Arts/Social & Behvrl	28	0	0	24	0	0	79	0	0	58	0	0	62	0	0			
Liberal Arts/Math & Science	3	0	0	14	0	0	21	0	0	23	0	0	44	0	0			
Business Administration	2	9	3	13	7	1	19	7	1	23	3	0	24	1	0			
Liberal Arts/Arts & Humanities	3	0	0	13	0	0	33	0	0	37	0	0	42	0	0			
Human Services	0	0	0	0	6	0	0	5	0	0	8	0	0	6	0			
Human Services Worker	0	0	0	0	0	1	0	0	3	0	0	8	0	0	9			
Administration of Justice	0	7	7	0	12	6	0	17	6	0	2	3	0	6	3			

Notes¹ **Source:** ODS Reports (July, 2013)² **Student Headcount, *Unduplicated*:** Number of students enrolled on census day, where each student is counted one time.³ **F-t-F:** Face to Face instructional delivery mode.⁴ **Enrollment:** Every course in which students are enrolled on census day.⁵ **Students/Section:** Student enrollments per section on census day. Cross-listed sections are not combined.⁶ Acronyms **FTES** and **FTEF** represent full-time equivalent students and full-time equivalent faculty, respectively.⁷ **FTES/FTEF:** A measurement of productivity where the generally accepted target is 17.5.⁸ **Success rate numerator:** Number of course enrollments with a successful passing grade (A,B,C,P/CR).**Retention rate numerator:** Number of course enrollments retained through the semester (grade = A,B,C,P/CR,D,F,NP/NC,I).**Success and Retention rate denominator:** Number of enrollments retained (A,B,C,P/CR,D,F,NP/NC,I), withdrawn (W), and dropped after Census Day (DR).