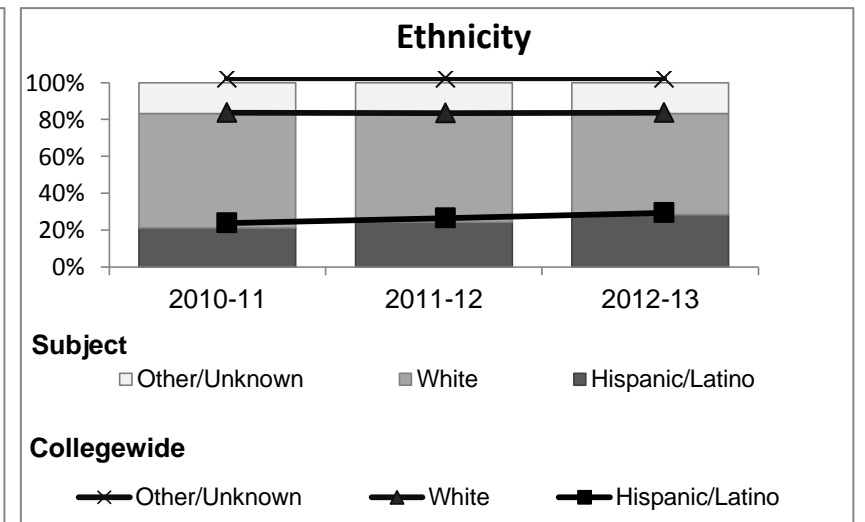
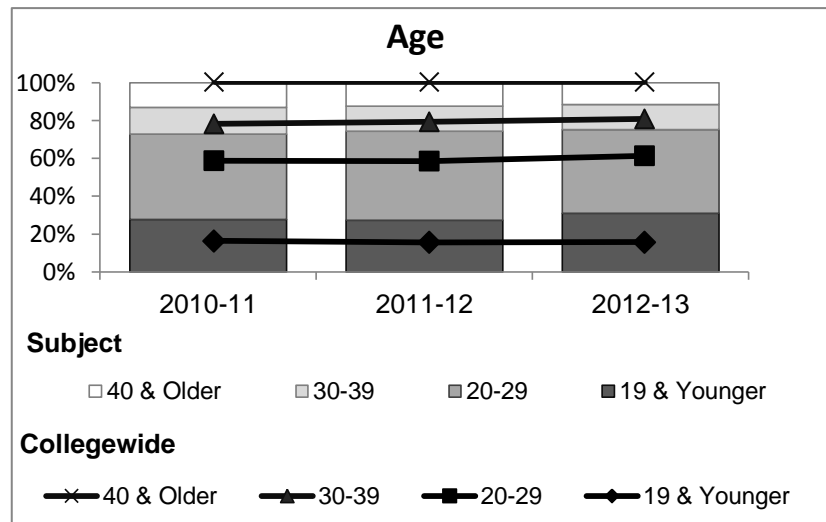
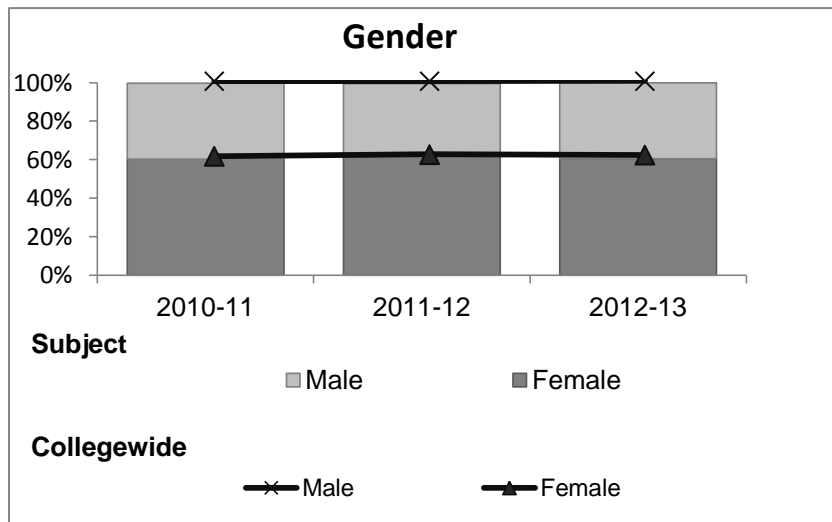


English

Student Demographic Information

Student Headcount	2008-09		2009-10		2010-11		2011-12		2012-13		2012-13	
	#	% change - Prior Yr	#	% change - Prior Yr	#	% change - Prior Yr	#	% change - Prior Yr	Subject		Collegewide	
									#	% change - Prior Yr	#	% change - Prior Yr
Unduplicated ²	1,488	--	1,578	6%	1,678	6%	1,657	-1%	1,666	1%	8,583	-16%

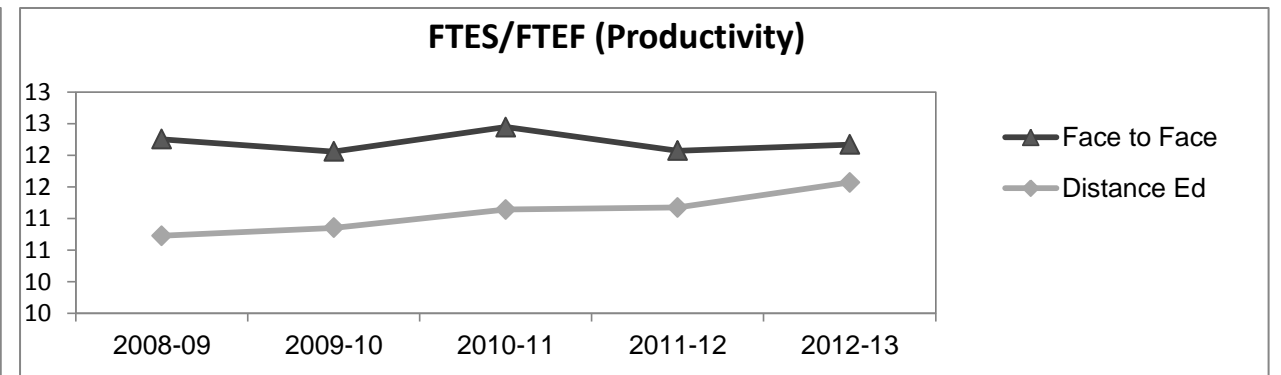
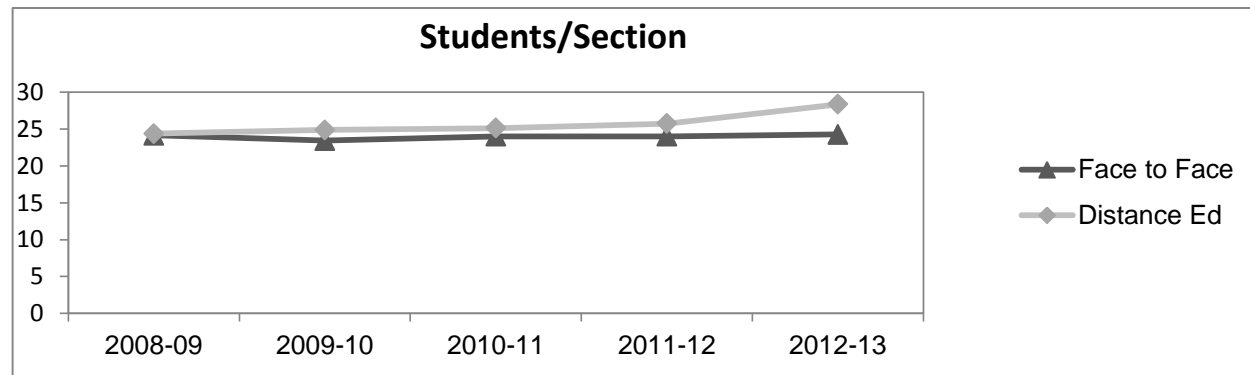
	2008-09		2009-10		2010-11		2011-12		2012-13		2012-13	
	#	%	#	%	#	%	#	%	Subject		Collegewide	
									#	%	#	%
Gender												
Female	902	61%	953	60%	1,013	60%	1,022	62%	1,007	60%	5,289	62%
Male	579	39%	617	39%	658	39%	626	38%	657	39%	3,283	38%
Unknown	7	0%	8	1%	7	0%	9	1%	2	0%	11	0%
Age												
19 & Younger	459	31%	466	30%	465	28%	451	27%	517	31%	1,298	15%
20-29	618	42%	671	43%	757	45%	780	47%	737	44%	3,929	46%
30-39	211	14%	219	14%	236	14%	220	13%	218	13%	1,671	19%
40 & Older	200	13%	222	14%	220	13%	206	12%	194	12%	1,685	20%
Ethnicity												
African American	63	4%	68	4%	83	5%	81	5%	58	3%	502	6%
American Indian	44	3%	44	3%	55	3%	59	4%	44	3%	177	2%
Asian/Filipino/Pac Islander	71	5%	67	4%	55	3%	54	3%	55	3%	416	5%
Hispanic/Latino	256	17%	308	20%	356	21%	403	24%	471	28%	2,554	30%
White	955	64%	1,004	64%	1,041	62%	964	58%	917	55%	4,480	52%
Two or more races	50	3%	55	3%	80	5%	94	6%	118	7%	413	5%
Unknown	49	3%	32	2%	8	0%	2	0%	3	0%	41	0%



English

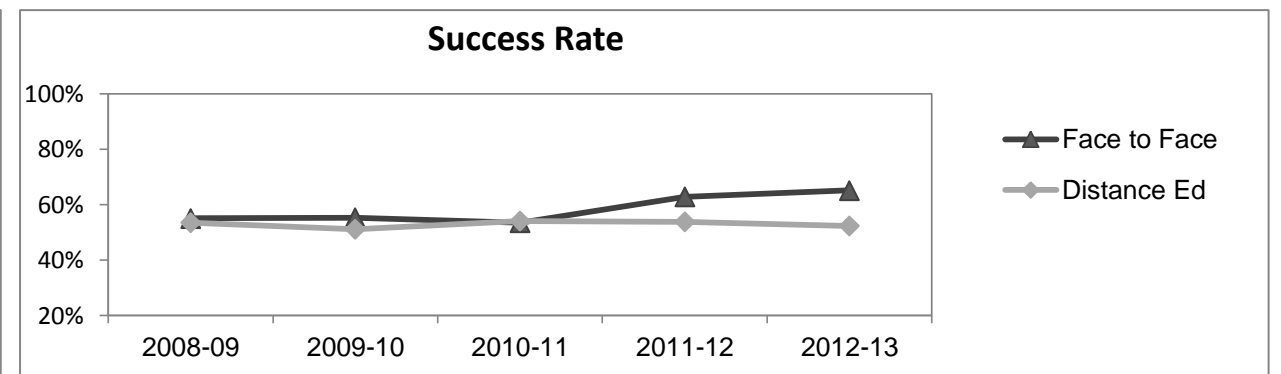
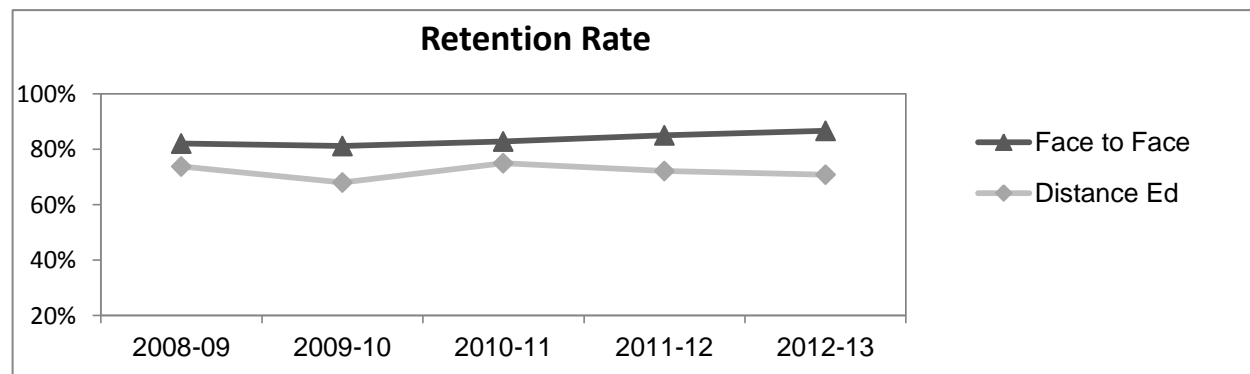
Course Enrollments - Productivity

	2008-09			2009-10			2010-11			2011-12			2012-13			2012-13		
	F-t-F ³	DE	Total	F-t-F ³	DE	Total	F-t-F ³	DE	Total	F-t-F ³	DE	Total	Subject			Collegewide		
	F-t-F ³	DE	Total	F-t-F ³	DE	Total	F-t-F ³	DE	Total	F-t-F ³	DE	Total	F-t-F ³	DE	Total	F-t-F ³	DE	Total
Number of Sections	47	33	80	45	37	82	47	40	87	43	41	84	48	34	82	511	519	1,030
Enrollment ⁴																		
Census	1,134	804	1,938	1,053	920	1,973	1,127	1,004	2,131	1,032	1,054	2,086	1,164	963	2,127	9,387	15,094	24,481
Students/Section ⁵	24	24	24	23	25	24	24	25	24	24	26	25	24	28	26	18	29	24
Productivity																		
FTES ⁶	147.9	87.2	235.1	143.9	102.7	246.6	154.3	112.8	267.2	144.1	117.7	261.7	152.5	108.7	261.2	1,368.1	1,573.3	2,941.4
FTEF ⁶	12.1	8.1	20.2	11.9	9.5	21.4	12.4	10.1	22.5	11.9	10.5	22.5	12.5	9.4	21.9	98.2	104.3	202.5
<i>Contract</i>			62%			60%			45%			43%			50%			38%
<i>Overload</i>			14%			16%			20%			18%			20%			12%
<i>Adjunct</i>			13%			14%			22%			27%			17%			36%
<i>Summer</i>			12%			11%			12%			12%			12%			14%
FTES/FTEF ⁷	12.3	10.7	11.6	12.1	10.9	11.5	12.4	11.1	11.9	12.1	11.2	11.7	12.2	11.6	11.9	13.9	15.1	14.5



Outcomes

	2008-09			2009-10			2010-11			2011-12			2012-13			2012-13		
	F-t-F ³	DE	Total	F-t-F ³	DE	Total	F-t-F ³	DE	Total	F-t-F ³	DE	Total	Subject			Collegewide		
	F-t-F ³	DE	Total	F-t-F ³	DE	Total	F-t-F ³	DE	Total	F-t-F ³	DE	Total	F-t-F ³	DE	Total	F-t-F ³	DE	Total
Retention Rate ⁸	82.0%	73.8%	78.6%	81.2%	68.0%	75.0%	82.8%	74.9%	79.1%	85.0%	72.2%	78.5%	86.7%	70.8%	79.5%	90.1%	78.5%	83.0%
Success Rate ⁸	55.0%	53.4%	54.4%	55.3%	51.1%	53.3%	53.5%	54.0%	53.7%	62.8%	53.7%	58.2%	65.1%	52.3%	59.3%	75.9%	61.0%	66.8%



Trend Data from Institutional Research & Reporting¹

English

Degrees - Certificates

													2012-13					
	2008-09			2009-10			2010-11			2011-12			Subject			Collegewide		
	AA	AS	CERT	AA	AS	CERT	AA	AS	CERT	AA	AS	CERT	AA	AS	CERT	AA	AS	CERT
Awards related to or contributed to by English																		
Total Awards by Type	0	0	0	0	0	0	0	0	0	0	0	0	0	0	0	193	61	121
% of total awards by type																51%	16%	32%
Total Awards	0			0			0			0			0			375		
Liberal Arts/Arts & Humanities	3	0	0	13	0	0	33	0	0	37	0	0	42	0	0			
Human Services	0	0	0	0	6	0	0	5	0	0	8	0	0	6	0			
Human Services Worker	0	0	0	0	0	1	0	0	3	0	0	8	0	0	9			
Web Design	0	7	2	0	4	1	0	1	1	0	2	3	0	2	3			

Notes

- ¹ **Source:** ODS Reports (July, 2013)
- ² **Student Headcount, *Unduplicated*:** Number of students enrolled on census day, where each student is counted one time.
- ³ **F-t-F:** Face to Face instructional delivery mode.
- ⁴ **Enrollment:** Every course in which students are enrolled on census day.
- ⁵ **Students/Section:** Student enrollments per section on census day. Cross-listed sections are not combined.
- ⁶ Acronyms **FTES** and **FTEF** represent full-time equivalent students and full-time equivalent faculty, respectively.
- ⁷ **FTES/FTEF:** A measurement of productivity where the generally accepted target is 17.5.
- ⁸ **Success rate numerator:** Number of course enrollments with a successful passing grade (A,B,C,P/CR).
- Retention rate numerator:** Number of course enrollments retained through the semester (grade = A,B,C,P/CR,D,F,NP/NC,I).
- Success and Retention rate denominator:** Number of enrollments retained (A,B,C,P/CR,D,F,NP/NC,I), withdrawn (W), and dropped after Census Day (DR).