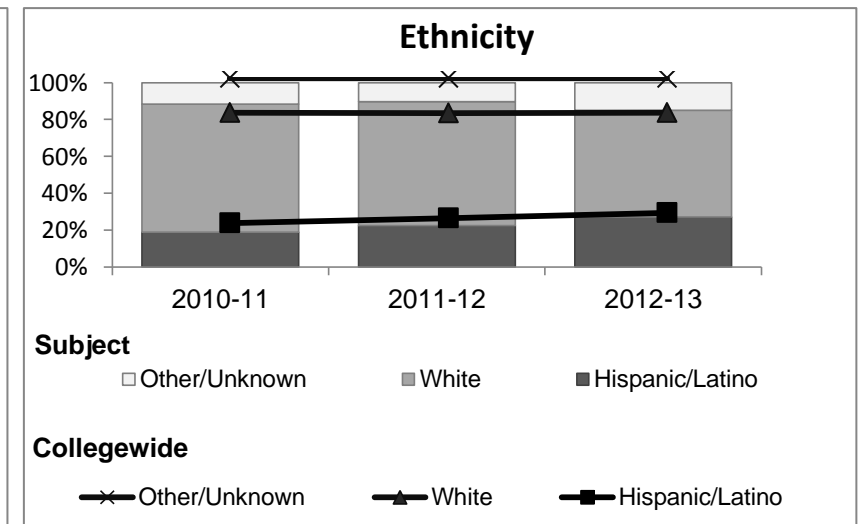
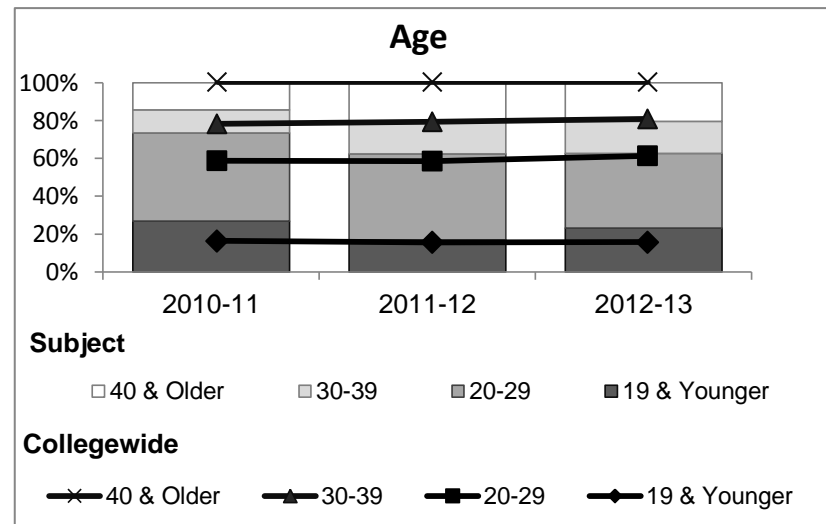
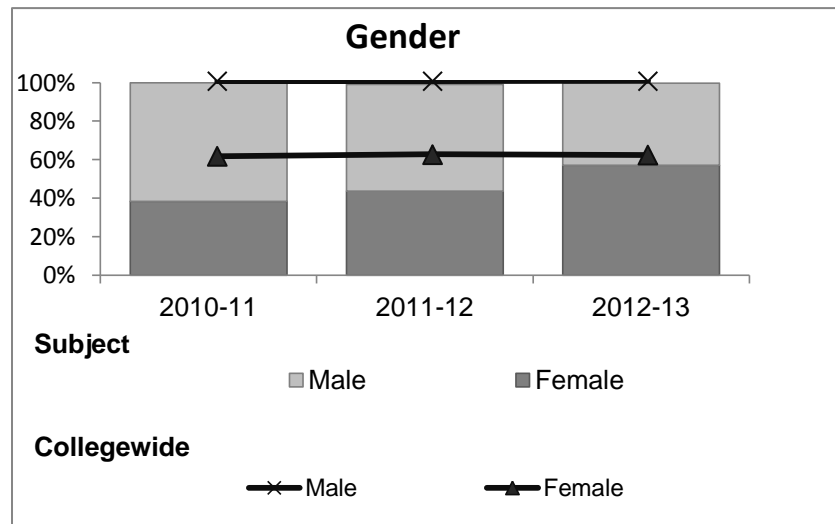


Emergency Medical Technology

Student Demographic Information

Student Headcount	2008-09		2009-10		2010-11		2011-12		2012-13		2012-13	
	#	% change - Prior Yr	#	% change - Prior Yr	#	% change - Prior Yr	#	% change - Prior Yr	Subject		Collegewide	
									#	% change - Prior Yr	#	% change - Prior Yr
Unduplicated ²	250	--	295	18%	242	-18%	213	-12%	273	28%	8,583	-16%

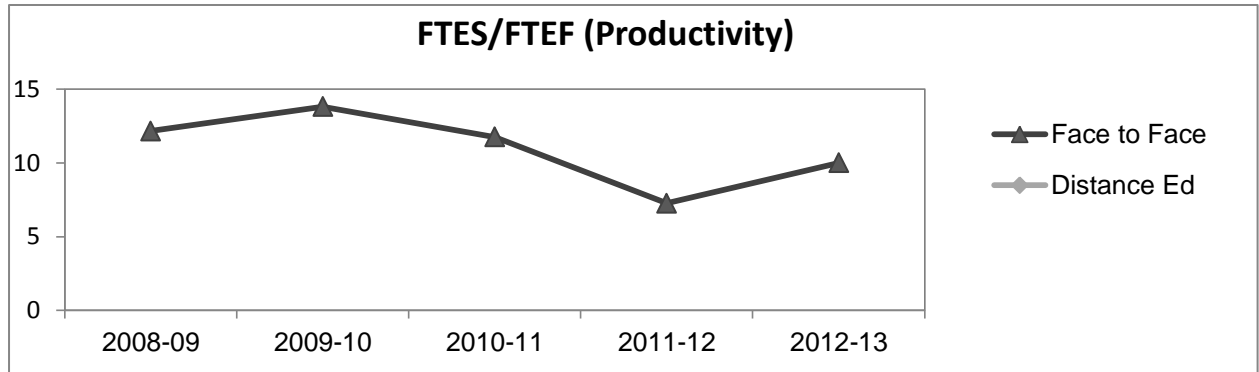
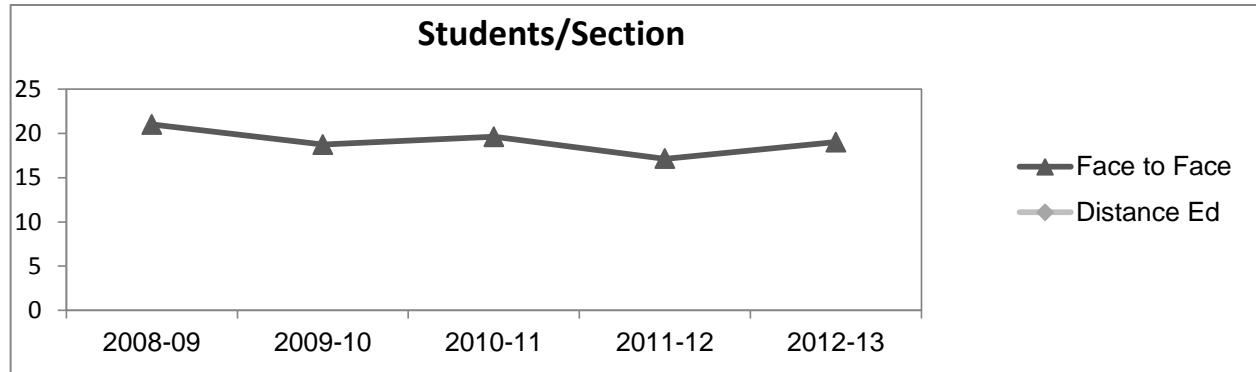
	2008-09		2009-10		2010-11		2011-12		2012-13		2012-13	
	#	%	#	%	#	%	#	%	Subject		Collegewide	
									#	%	#	%
Gender												
Female	108	43%	140	47%	93	38%	93	44%	156	57%	5,289	62%
Male	141	56%	154	52%	149	62%	118	55%	116	42%	3,283	38%
Unknown	1	0%	1	0%	0	0%	2	1%	1	0%	11	0%
Age												
19 & Younger	67	27%	73	25%	65	27%	36	17%	63	23%	1,298	15%
20-29	98	39%	131	44%	113	47%	97	46%	108	40%	3,929	46%
30-39	40	16%	45	15%	29	12%	37	17%	46	17%	1,671	19%
40 & Older	45	18%	46	16%	35	14%	43	20%	56	21%	1,685	20%
Ethnicity												
African American	7	3%	8	3%	8	3%	9	4%	9	3%	502	6%
American Indian	9	4%	8	3%	3	1%	4	2%	4	1%	177	2%
Asian/Filipino/Pac Islander	9	4%	9	3%	4	2%	5	2%	13	5%	416	5%
Hispanic/Latino	28	11%	35	12%	46	19%	48	23%	74	27%	2,554	30%
White	188	75%	217	74%	168	69%	143	67%	158	58%	4,480	52%
Two or more races	3	1%	13	4%	13	5%	2	1%	14	5%	413	5%
Unknown	6	2%	5	2%	0	0%	2	1%	1	0%	41	0%



Emergency Medical Technology

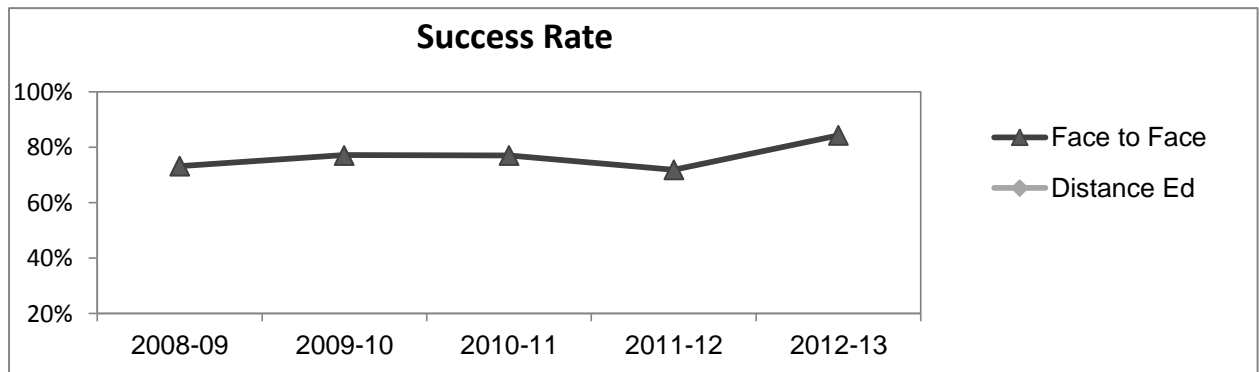
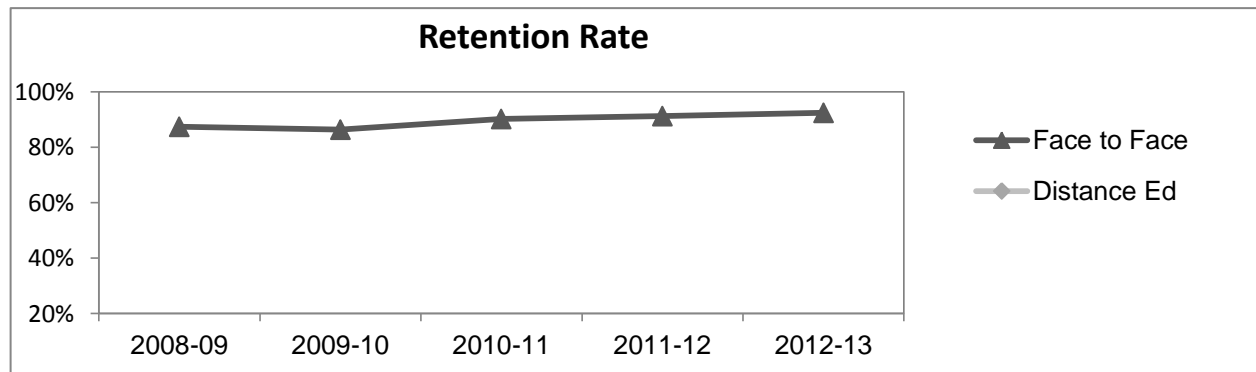
Course Enrollments - Productivity

	2008-09			2009-10			2010-11			2011-12			2012-13			2012-13		
	F-t-F ³	DE	Total	F-t-F ³	DE	Total	F-t-F ³	DE	Total	F-t-F ³	DE	Total	Subject			Collegewide		
	F-t-F ³	DE	Total	F-t-F ³	DE	Total	F-t-F ³	DE	Total	F-t-F ³	DE	Total	F-t-F ³	DE	Total	F-t-F ³	DE	Total
Number of Sections	17	0	17	22	0	22	18	0	18	18	0	18	20	0	20	511	519	1,030
Enrollment ⁴																		
Census	357	0	357	412	0	412	353	0	353	308	0	308	380	0	380	9,387	15,094	24,481
Students/Section ⁵	21		21	19		19	20		20	17		17	19		19	18	29	24
Productivity																		
FTES ⁶	52.2	0	52.2	60.7	0	60.7	51.5	0	51.5	34.8	0	34.8	44.8	0	44.8	1,368.1	1,573.3	2,941.4
FTEF ⁶	4.3	0	4.3	4.4	0	4.4	4.4	0	4.4	4.8	0	4.8	4.5	0	4.5	98.2	104.3	202.5
<i>Contract</i>			47%			46%			46%			39%			37%			38%
<i>Overload</i>			18%			11%			11%			15%			20%			12%
<i>Adjunct</i>			33%			43%			43%			46%			41%			36%
<i>Summer</i>			2%			0%			0%			0%			2%			14%
FTES/FTEF ⁷	12.1		12.1	13.8		13.8	11.8		11.8	7.3		7.3	10.0		10.0	13.9	15.1	14.5



Outcomes

	2008-09			2009-10			2010-11			2011-12			2012-13			2012-13		
	F-t-F ³	DE	Total	F-t-F ³	DE	Total	F-t-F ³	DE	Total	F-t-F ³	DE	Total	Subject			Collegewide		
	F-t-F ³	DE	Total	F-t-F ³	DE	Total	F-t-F ³	DE	Total	F-t-F ³	DE	Total	F-t-F ³	DE	Total	F-t-F ³	DE	Total
Retention Rate ⁸	87.5%		87.5%	86.3%		86.3%	90.2%		90.2%	91.3%		91.3%	92.4%		92.4%	90.1%	78.5%	83.0%
Success Rate ⁸	73.2%		73.2%	77.1%		77.1%	77.0%		77.0%	71.9%		71.9%	84.2%		84.2%	75.9%	61.0%	66.8%



Emergency Medical Technology

Degrees - Certificates

													2012-13					
	2008-09			2009-10			2010-11			2011-12			Subject			Collegewide		
	AA	AS	CERT	AA	AS	CERT	AA	AS	CERT	AA	AS	CERT	AA	AS	CERT	AA	AS	CERT
Awards related to or contributed to by Allied Health Careers																		
Emergency Medical Technology	0	0	0	0	0	0	0	0	0	0	0	0	0	0	14			
Nursing LVN	0	1	13	0	5	7	0	5	11	0	17	2	0	9	24			
Human Services	0	0	0	0	6	0	0	5	0	0	8	0	0	6	0			
Human Services Worker	0	0	0	0	0	1	0	0	3	0	0	8	0	0	9			
Total Awards by Type	0	1	13	0	11	8	0	10	14	0	25	10	0	15	47	193	61	121
% of total awards by type	0%	7%	93%	0%	58%	42%	0%	42%	58%	0%	71%	29%	0%	24%	76%	51%	16%	32%
Total Awards	14			19			24			35			62			375		
Child Dvlpmnt Master Teacher	0	0	0	0	0	0	0	0	0	0	0	1	0	0	0			

Notes

¹ **Source:** ODS Reports (July, 2013)

² **Student Headcount, *Unduplicated*:** Number of students enrolled on census day, where each student is counted one time.

³ **F-t-F:** Face to Face instructional delivery mode.

⁴ **Enrollment:** Every course in which students are enrolled on census day.

⁵ **Students/Section:** Student enrollments per section on census day. Cross-listed sections are not combined.

⁶ Acronyms **FTES** and **FTEF** represent full-time equivalent students and full-time equivalent faculty, respectively.

⁷ **FTES/FTEF:** A measurement of productivity where the generally accepted target is 17.5.

⁸ **Success rate numerator:** Number of course enrollments with a successful passing grade (A,B,C,P/CR).

Retention rate numerator: Number of course enrollments retained through the semester (grade = A,B,C,P/CR,D,F,NP/NC,I).

Success and Retention rate denominator: Number of enrollments retained (A,B,C,P/CR,D,F,NP/NC,I), withdrawn (W), and dropped after Census Day (DR).