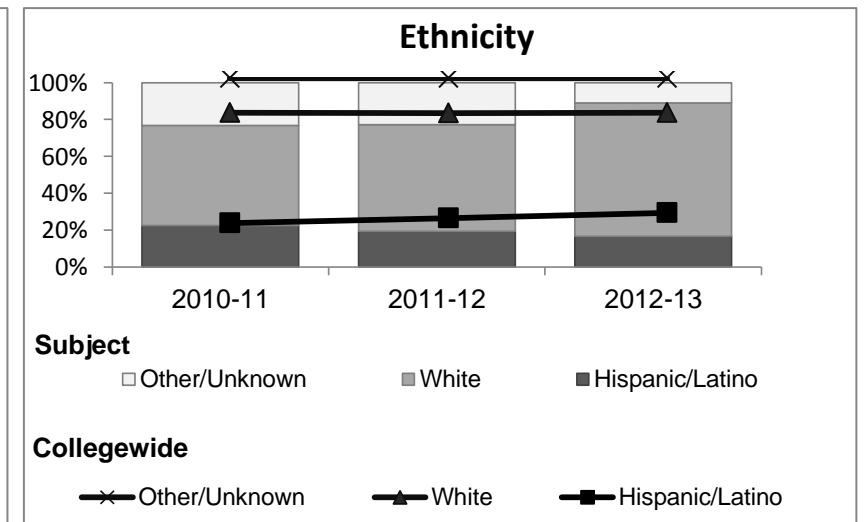
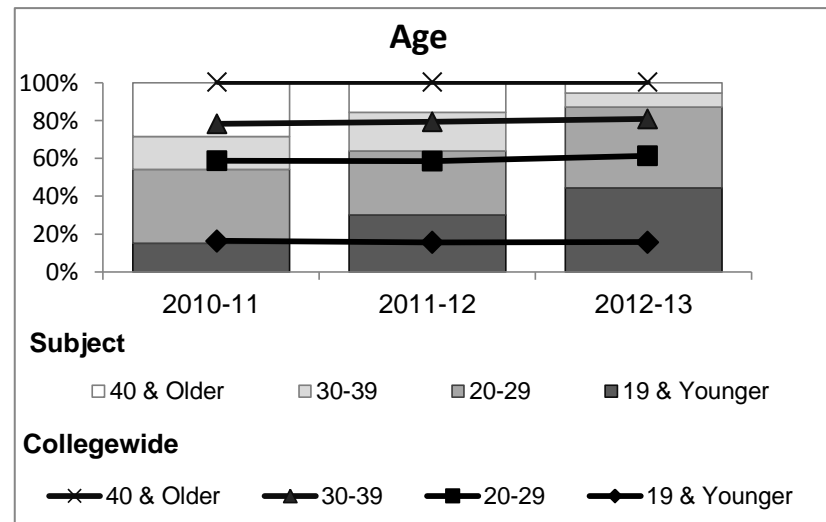
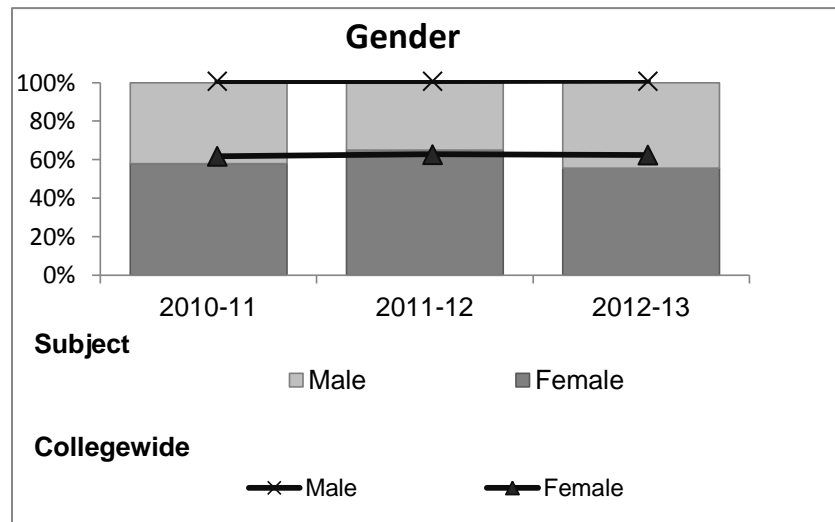


Education

Student Demographic Information

Student Headcount	2008-09		2009-10		2010-11		2011-12		2012-13		2012-13	
	#	% change - Prior Yr	#	% change - Prior Yr	#	% change - Prior Yr	#	% change - Prior Yr	Subject		Collegewide	
									#	% change - Prior Yr	#	% change - Prior Yr
Unduplicated ²	198	--	197	-1%	133	-32%	83	-38%	54	-35%	8,583	-16%

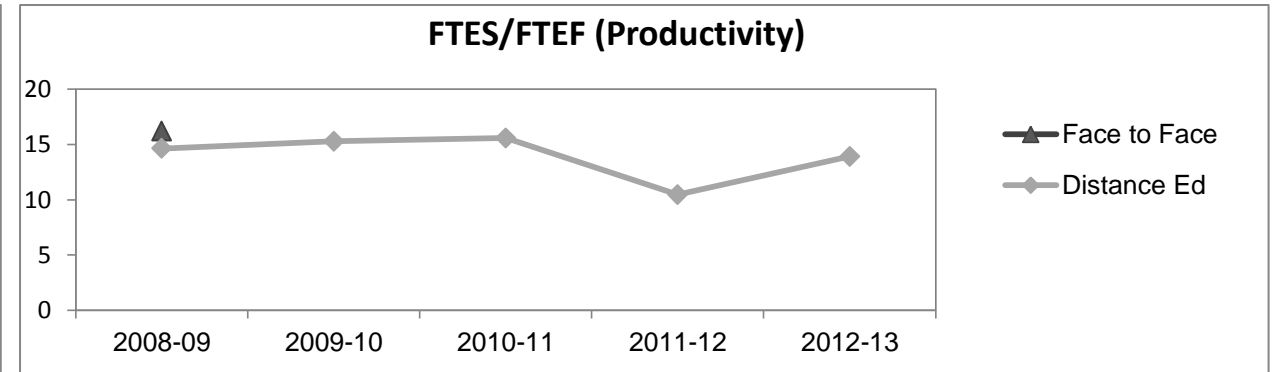
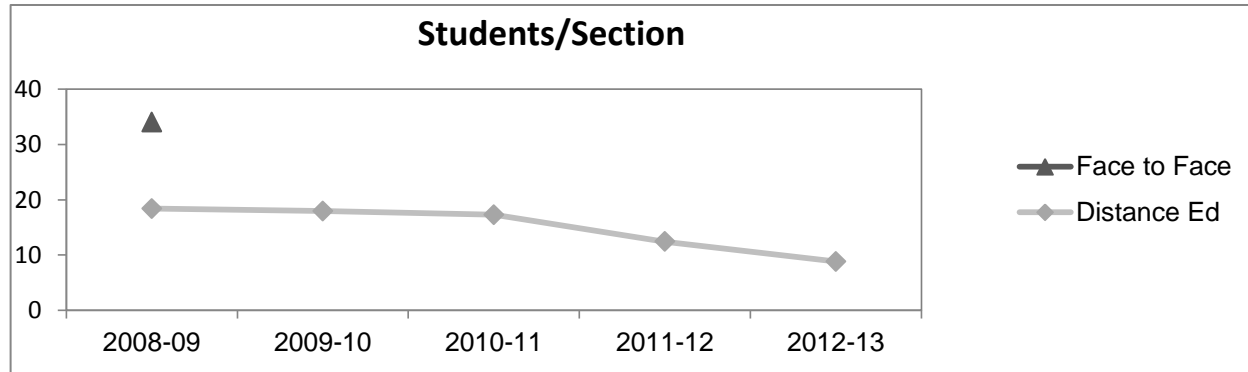
	2008-09		2009-10		2010-11		2011-12		2012-13		2012-13	
	#	%	#	%	#	%	#	%	Subject		Collegewide	
									#	%	#	%
Gender												
Female	142	72%	147	75%	77	58%	54	65%	30	56%	5,289	62%
Male	56	28%	50	25%	56	42%	29	35%	24	44%	3,283	38%
Unknown	0	0%	0	0%	0	0%	0	0%	0	0%	11	0%
Age												
19 & Younger	20	10%	15	8%	20	15%	25	30%	24	44%	1,298	15%
20-29	33	17%	41	21%	52	39%	28	34%	23	43%	3,929	46%
30-39	44	22%	43	22%	23	17%	17	20%	4	7%	1,671	19%
40 & Older	101	51%	98	50%	38	29%	13	16%	3	6%	1,685	20%
Ethnicity												
African American	12	6%	11	6%	20	15%	6	7%	1	2%	502	6%
American Indian	6	3%	2	1%	1	1%	1	1%	0	0%	177	2%
Asian/Filipino/Pac Islander	13	7%	13	7%	4	3%	7	8%	0	0%	416	5%
Hispanic/Latino	29	15%	29	15%	30	23%	16	19%	9	17%	2,554	30%
White	125	63%	137	70%	72	54%	48	58%	39	72%	4,480	52%
Two or more races	2	1%	3	2%	6	5%	5	6%	5	9%	413	5%
Unknown	11	6%	2	1%	0	0%	0	0%	0	0%	41	0%



Education

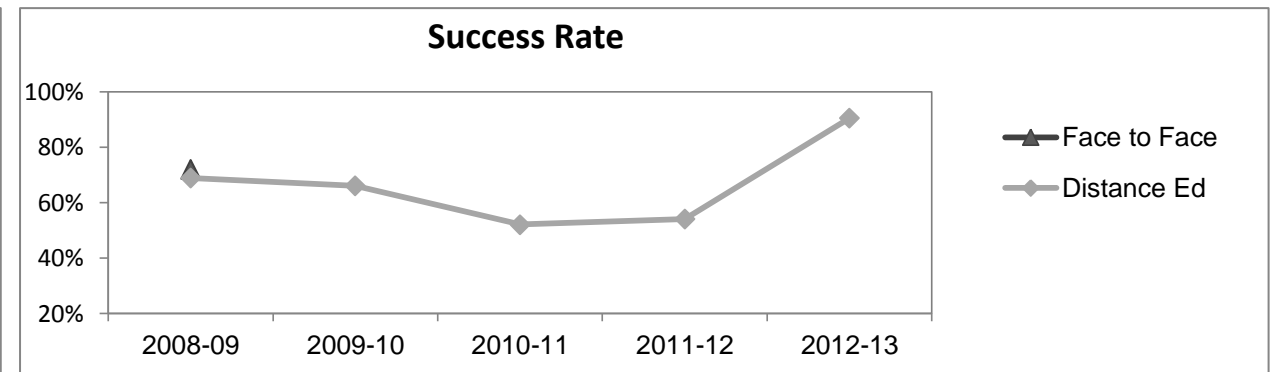
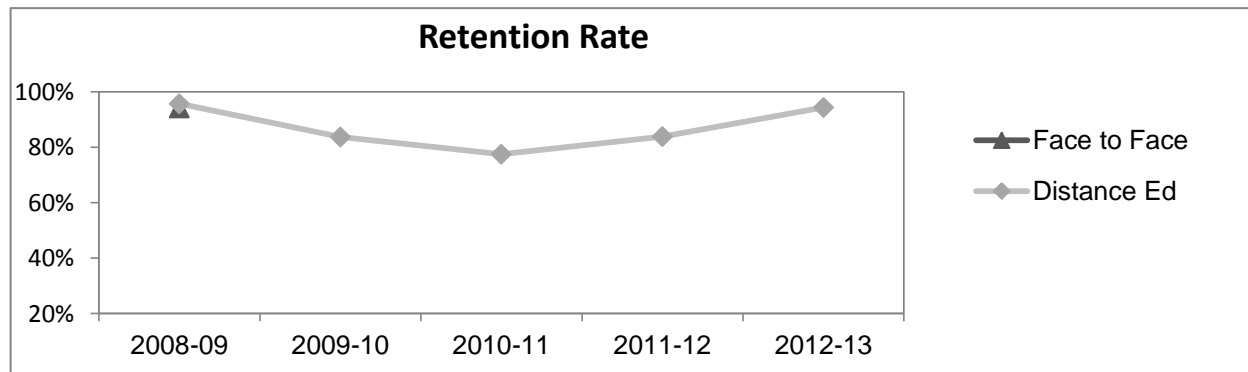
Course Enrollments - Productivity

	2008-09			2009-10			2010-11			2011-12			2012-13			2012-13		
	F-t-F ³	DE	Total	F-t-F ³	DE	Total	F-t-F ³	DE	Total	F-t-F ³	DE	Total	Subject			Collegewide		
	F-t-F ³	DE	Total	F-t-F ³	DE	Total	F-t-F ³	DE	Total	F-t-F ³	DE	Total	F-t-F ³	DE	Total	F-t-F ³	DE	Total
Number of Sections	4	8	12	0	15	15	0	10	10	0	7	7	0	6	6	511	519	1,030
Enrollment ⁴																		
Census	136	147	283	0	269	269	0	173	173	0	87	87	0	53	53	9,387	15,094	24,481
Students/Section ⁵	34	18	24		18	18		17	17		12	12		9	9	18	29	24
Productivity																		
FTES ⁶	6.5	5.5	11.9	0	9.9	9.9	0	5.4	5.4	0	1.5	1.5	0	1.0	1.0	1,368.1	1,573.3	2,941.4
FTEF ⁶	0.4	0.4	0.8	0	0.6	0.6	0	0.3	0.3	0	0.1	0.1	0	0.1	0.1	98.2	104.3	202.5
<i>Contract</i>			39%			48%			100%			100%			100%			38%
<i>Overload</i>			48%			37%			0%			0%			0%			12%
<i>Adjunct</i>			0%			0%			0%			0%			0%			36%
<i>Summer</i>			13%			15%			0%			0%			0%			14%
FTES/FTEF ⁷	16.2	14.6	15.4		15.3	15.3		15.6	15.6		10.5	10.5		13.9	13.9	13.9	15.1	14.5



Outcomes

	2008-09			2009-10			2010-11			2011-12			2012-13			2012-13		
	F-t-F ³	DE	Total	F-t-F ³	DE	Total	F-t-F ³	DE	Total	F-t-F ³	DE	Total	Subject			Collegewide		
	F-t-F ³	DE	Total	F-t-F ³	DE	Total	F-t-F ³	DE	Total	F-t-F ³	DE	Total	F-t-F ³	DE	Total	F-t-F ³	DE	Total
Retention Rate ⁸	94.2%	95.7%	94.9%		83.8%	83.8%		77.5%	77.5%		83.9%	83.9%		94.3%	94.3%	90.1%	78.5%	83.0%
Success Rate ⁸	71.9%	68.8%	70.4%		66.1%	66.1%		52.1%	52.1%		54.0%	54.0%		90.6%	90.6%	75.9%	61.0%	66.8%



Education

Degrees - Certificates

													2012-13					
	2008-09			2009-10			2010-11			2011-12			Subject			Collegewide		
	AA	AS	CERT	AA	AS	CERT	AA	AS	CERT	AA	AS	CERT	AA	AS	CERT	AA	AS	CERT
Awards related to or contributed to by Child Development																		
Child Dev Assistant Teacher	0	0	0	0	0	0	0	0	0	0	0	1	0	0	2			
Child Dev Associate Teacher	0	0	0	0	0	0	0	0	0	0	0	2	0	0	0			
Child Development	0	5	1	0	14	0	0	13	4	4	3	1	8	0	0			
Child Development Teacher	0	0	0	0	0	0	0	0	0	0	0	3	0	0	2			
Child Dvlpmnt Master Teacher	0	0	0	0	0	0	0	0	0	0	0	1	0	0	0			
Child Dvlpmnt Site Supervisor	0	0	0	0	0	0	0	0	0	0	0	1	0	0	0			
General Education	71	0	0	48	0	0	19	0	0	6	0	0	4	0	0			
Total Awards by Type	71	5	1	48	14	0	19	13	4	10	3	9	12	0	4	193	61	121
% of total awards by type	92%	6%	1%	77%	23%	0%	53%	36%	11%	45%	14%	41%	75%	0%	25%	51%	16%	32%
Total Awards	77			62			36			22			16			375		
Human Services	0	0	0	0	6	0	0	5	0	0	8	0	0	6	0			
Human Services Worker	0	0	0	0	0	1	0	0	3	0	0	8	0	0	9			
Liberal Arts/Social & Behvrl	28	0	0	24	0	0	79	0	0	58	0	0	62	0	0			

Notes

- ¹ **Source:** ODS Reports (July, 2013)
- ² **Student Headcount, Unduplicated:** Number of students enrolled on census day, where each student is counted one time.
- ³ **F-t-F:** Face to Face instructional delivery mode.
- ⁴ **Enrollment:** Every course in which students are enrolled on census day.
- ⁵ **Students/Section:** Student enrollments per section on census day. Cross-listed sections are not combined.
- ⁶ Acronyms **FTES** and **FTEF** represent full-time equivalent students and full-time equivalent faculty, respectively.
- ⁷ **FTES/FTEF:** A measurement of productivity where the generally accepted target is 17.5.
- ⁸ **Success rate numerator:** Number of course enrollments with a successful passing grade (A,B,C,P/CR).
- Retention rate numerator:** Number of course enrollments retained through the semester (grade = A,B,C,P/CR,D,F,NP/NC,I).
- Success and Retention rate denominator:** Number of enrollments retained (A,B,C,P/CR,D,F,NP/NC,I), withdrawn (W), and dropped after Census Day (DR).