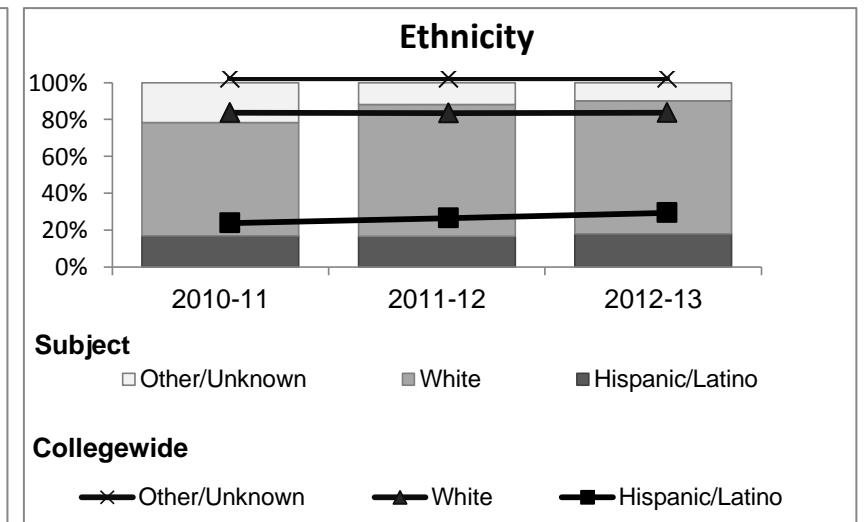
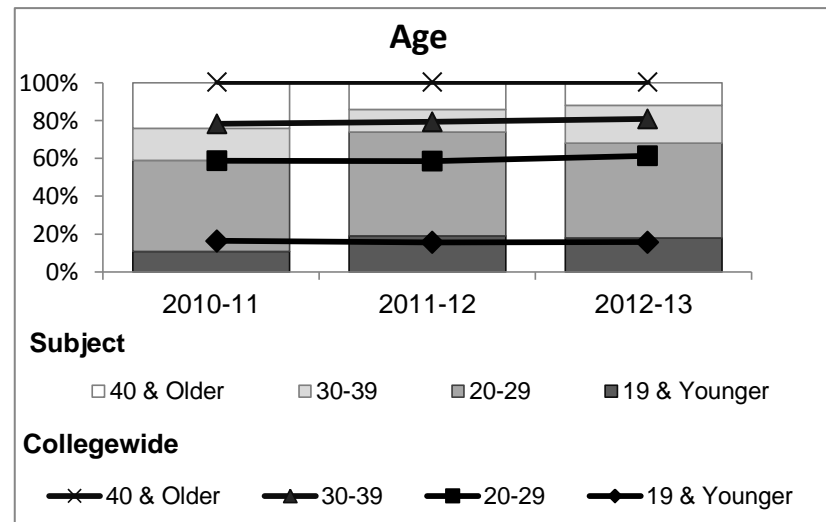
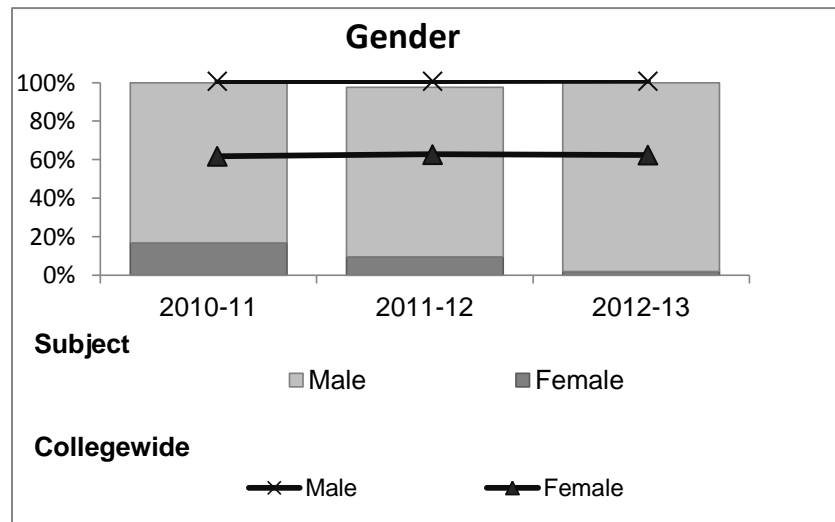


## Drafting

### Student Demographic Information

Student Headcount	2008-09		2009-10		2010-11		2011-12		2012-13		2012-13	
	#	% change - Prior Yr	#	% change - Prior Yr	#	% change - Prior Yr	#	% change - Prior Yr	Subject		Collegewide	
									#	% change - Prior Yr	#	% change - Prior Yr
Unduplicated <sup>2</sup>	44	--	74	68%	83	12%	42	-49%	50	19%	8,583	-16%

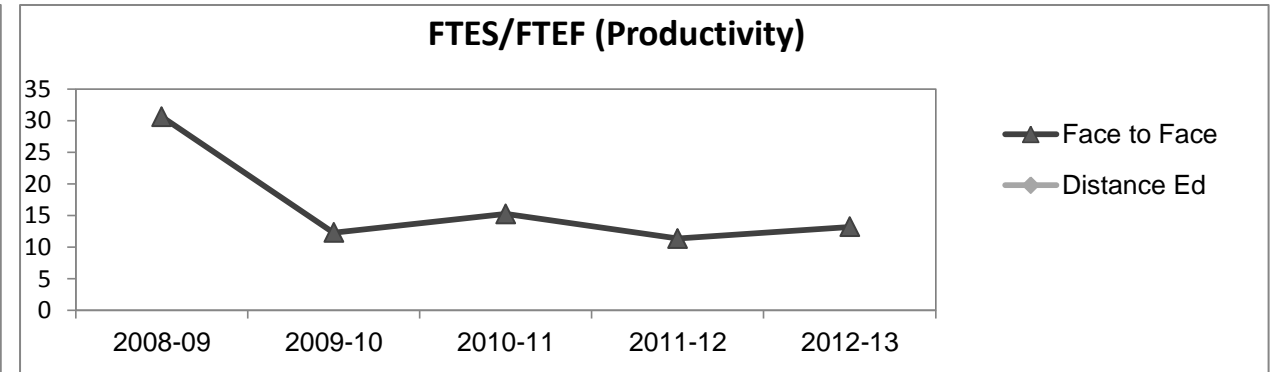
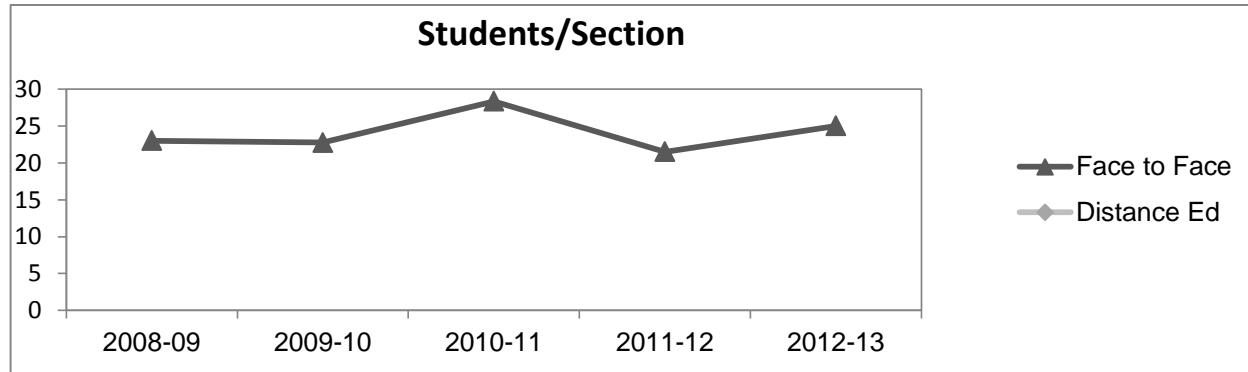
	2008-09		2009-10		2010-11		2011-12		2012-13		2012-13	
	#	%	#	%	#	%	#	%	Subject		Collegewide	
									#	%	#	%
<b>Gender</b>												
Female	6	14%	11	15%	14	17%	4	10%	1	2%	5,289	62%
Male	38	86%	63	85%	69	83%	37	88%	49	98%	3,283	38%
Unknown	0	0%	0	0%	0	0%	1	2%	0	0%	11	0%
<b>Age</b>												
19 & Younger	9	20%	18	24%	9	11%	8	19%	9	18%	1,298	15%
20-29	20	45%	33	45%	40	48%	23	55%	25	50%	3,929	46%
30-39	8	18%	11	15%	14	17%	5	12%	10	20%	1,671	19%
40 & Older	7	16%	12	16%	20	24%	6	14%	6	12%	1,685	20%
<b>Ethnicity</b>												
African American	1	2%	2	3%	6	7%	2	5%	1	2%	502	6%
American Indian	1	2%	2	3%	5	6%	1	2%	1	2%	177	2%
Asian/Filipino/Pac Islander	2	5%	5	7%	4	5%	0	0%	1	2%	416	5%
Hispanic/Latino	10	23%	6	8%	14	17%	7	17%	9	18%	2,554	30%
White	28	64%	53	72%	51	61%	30	71%	36	72%	4,480	52%
Two or more races	2	5%	5	7%	3	4%	2	5%	2	4%	413	5%
Unknown	0	0%	1	1%	0	0%	0	0%	0	0%	41	0%



## Drafting

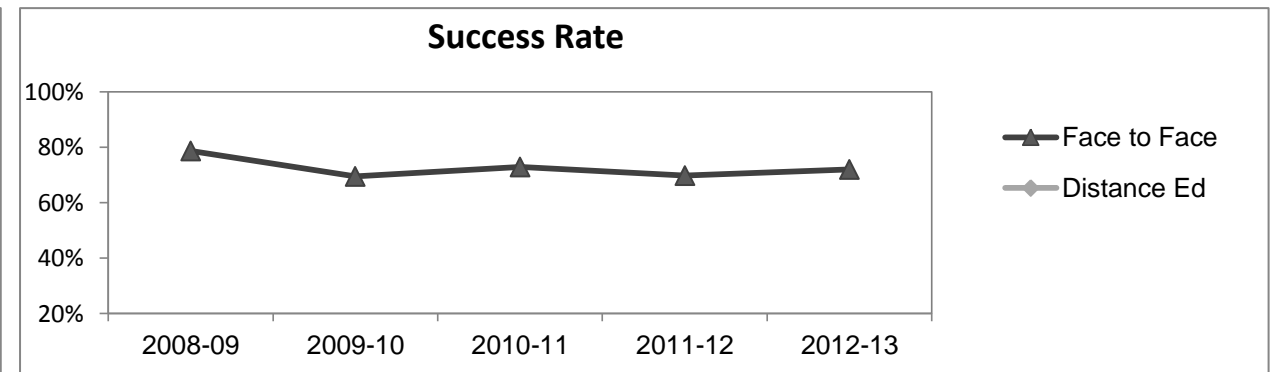
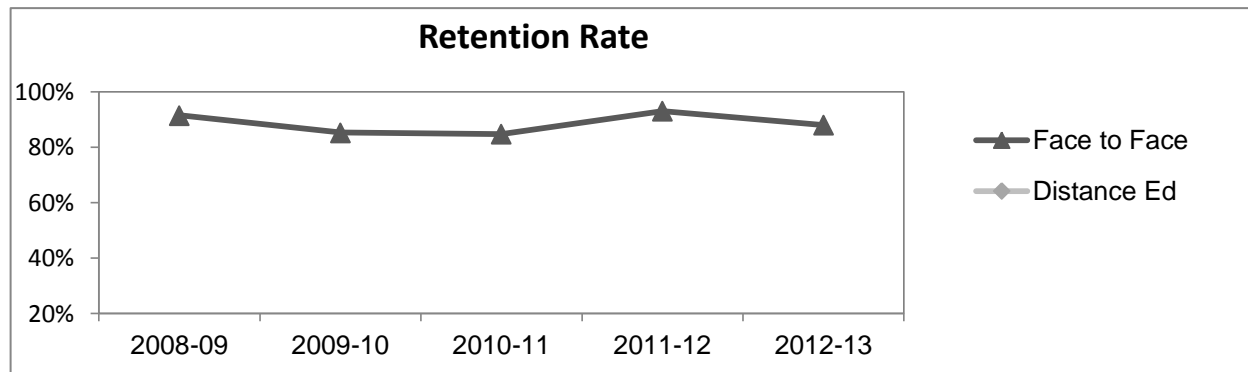
### Course Enrollments - Productivity

	2008-09			2009-10			2010-11			2011-12			2012-13			2012-13		
	F-t-F <sup>3</sup>	DE	Total	F-t-F <sup>3</sup>	DE	Total	F-t-F <sup>3</sup>	DE	Total	F-t-F <sup>3</sup>	DE	Total	Subject			Collegewide		
	F-t-F <sup>3</sup>	DE	Total	F-t-F <sup>3</sup>	DE	Total	F-t-F <sup>3</sup>	DE	Total	F-t-F <sup>3</sup>	DE	Total	F-t-F <sup>3</sup>	DE	Total	F-t-F <sup>3</sup>	DE	Total
Number of Sections	2	0	2	4	0	4	3	0	3	2	0	2	2	0	2	511	519	1,030
Enrollment <sup>4</sup>																		
Census	46	0	46	91	0	91	85	0	85	43	0	43	50	0	50	9,387	15,094	24,481
Students/Section <sup>5</sup>	23		23	23		23	28		28	22		22	25		25	18	29	24
Productivity																		
FTES <sup>6</sup>	6.1	0	6.1	13.1	0	13.1	11.2	0	11.2	4.5	0	4.5	5.3	0	5.3	1,368.1	1,573.3	2,941.4
FTEF <sup>6</sup>	0.2	0	0.2	1.1	0	1.1	0.7	0	0.7	0.4	0	0.4	0.4	0	0.4	98.2	104.3	202.5
<i>Contract</i>			100%			38%			0%			100%			50%			38%
<i>Overload</i>			0%			0%			55%			0%			0%			12%
<i>Adjunct</i>			0%			62%			45%			0%			50%			36%
<i>Summer</i>			0%			0%			0%			0%			0%			14%
FTES/FTEF <sup>7</sup>	30.6		30.6	12.3		12.3	15.3		15.3	11.3		11.3	13.2		13.2	13.9	15.1	14.5



### Outcomes

	2008-09			2009-10			2010-11			2011-12			2012-13			2012-13		
	F-t-F <sup>3</sup>	DE	Total	F-t-F <sup>3</sup>	DE	Total	F-t-F <sup>3</sup>	DE	Total	F-t-F <sup>3</sup>	DE	Total	Subject			Collegewide		
	F-t-F <sup>3</sup>	DE	Total	F-t-F <sup>3</sup>	DE	Total	F-t-F <sup>3</sup>	DE	Total	F-t-F <sup>3</sup>	DE	Total	F-t-F <sup>3</sup>	DE	Total	F-t-F <sup>3</sup>	DE	Total
Retention Rate <sup>8</sup>	91.5%		91.5%	85.3%		85.3%	84.7%		84.7%	93.0%		93.0%	88.0%		88.0%	90.1%	78.5%	83.0%
Success Rate <sup>8</sup>	78.7%		78.7%	69.5%		69.5%	72.9%		72.9%	69.8%		69.8%	72.0%		72.0%	75.9%	61.0%	66.8%



## Drafting

### Degrees - Certificates

													2012-13					
	2008-09			2009-10			2010-11			2011-12			Subject			Collegewide		
	AA	AS	CERT	AA	AS	CERT	AA	AS	CERT	AA	AS	CERT	AA	AS	CERT	AA	AS	CERT
Awards related to or contributed to by Industrial Arts																		
Automotive Technology	0	0	0	0	1	0	0	0	0	0	0	0	0	0	0	0	0	0
Indstrl Tech: Engineering Tech	0	0	0	0	0	0	0	1	0	0	0	0	0	0	0	0	0	0
Indstrl Tech: Solar Technician	0	0	0	0	0	0	0	0	1	0	0	7	0	2	0			
Indstrl Tech: Wind Technician	0	0	0	0	0	0	0	0	0	0	0	2	0	0	0			
Industrial Technology	0	0	0	0	0	0	0	0	0	0	1	1	0	0	0			
Trades Practices	1	0	0	2	0	0	1	0	0	1	0	0	0	0	0			
Welding	0	0	0	0	1	0	0	0	0	0	0	0	0	0	0			
Welding Processes	0	0	0	0	0	0	0	0	0	0	0	5	0	0	19			
Welding Technology	0	0	2	0	0	4	0	1	3	0	4	11	0	7	15			
<b>Total Awards by Type</b>	1	0	2	2	2	4	1	2	4	1	5	26	0	9	34	193	61	121
<b>% of total awards by type</b>	33%	0%	67%	25%	25%	50%	14%	29%	57%	3%	16%	81%	0%	21%	79%	51%	16%	32%
<b>Total Awards</b>	3			8			7			32			43			375		

**Notes**

<sup>1</sup> **Source:** ODS Reports (July, 2013)

<sup>2</sup> **Student Headcount, *Unduplicated*:** Number of students enrolled on census day, where each student is counted one time.

<sup>3</sup> **F-t-F:** Face to Face instructional delivery mode.

<sup>4</sup> **Enrollment:** Every course in which students are enrolled on census day.

<sup>5</sup> **Students/Section:** Student enrollments per section on census day. Cross-listed sections are not combined.

<sup>6</sup> Acronyms **FTES** and **FTEF** represent full-time equivalent students and full-time equivalent faculty, respectively.

<sup>7</sup> **FTES/FTEF:** A measurement of productivity where the generally accepted target is 17.5.

<sup>8</sup> **Success rate numerator:** Number of course enrollments with a successful passing grade (A,B,C,P/CR).

**Retention rate numerator:** Number of course enrollments retained through the semester (grade = A,B,C,P/CR,D,F,NP/NC,I).

**Success and Retention rate denominator:** Number of enrollments retained (A,B,C,P/CR,D,F,NP/NC,I), withdrawn (W), and dropped after Census Day (DR).