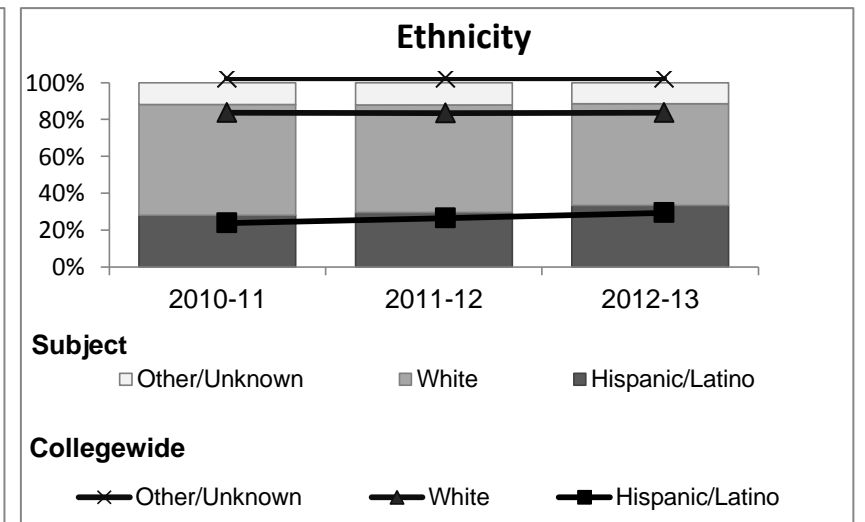
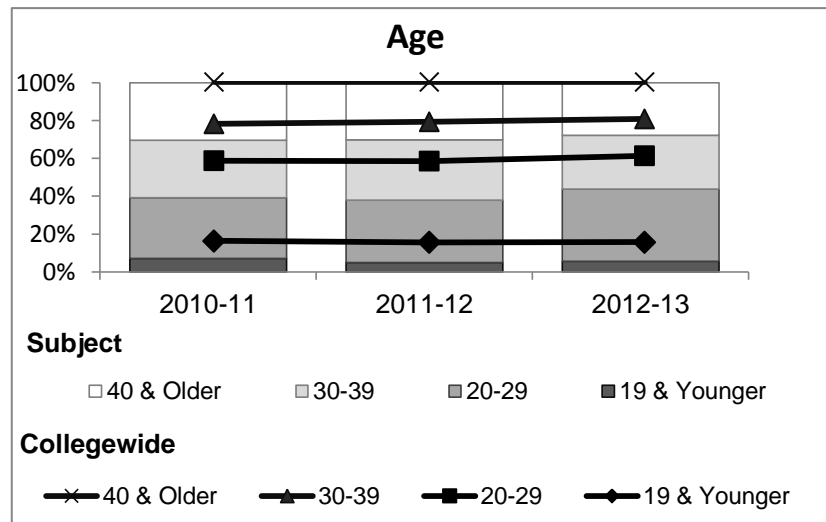
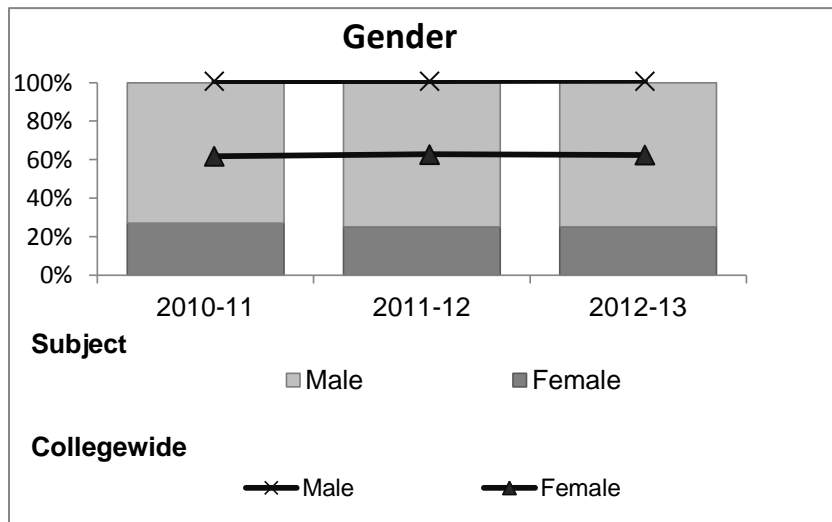


Administration of Justice

Student Demographic Information

Student Headcount	2008-09		2009-10		2010-11		2011-12		2012-13		2012-13	
	#	% change - Prior Yr	#	% change - Prior Yr	#	% change - Prior Yr	#	% change - Prior Yr	Subject		Collegewide	
									#	% change - Prior Yr	#	% change - Prior Yr
Unduplicated ²	863	--	1,546	79%	1,498	-3%	1,395	-7%	1,099	-21%	8,583	-16%

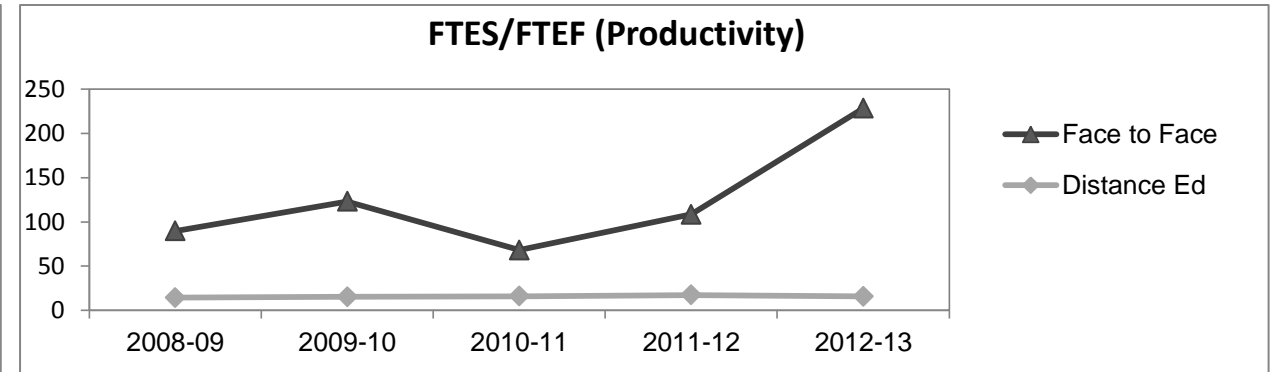
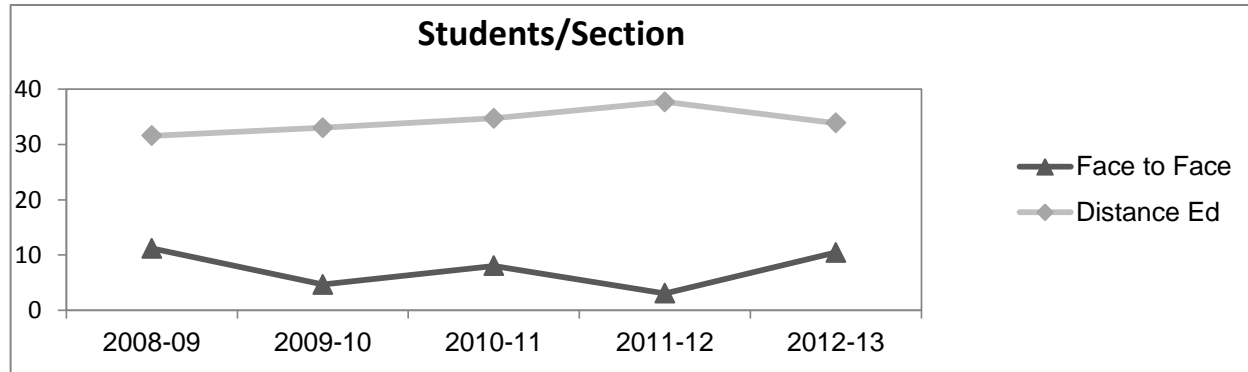
	2008-09		2009-10		2010-11		2011-12		2012-13		2012-13	
	#	%	#	%	#	%	#	%	Subject		Collegewide	
									#	%	#	%
Gender												
Female	248	29%	399	26%	404	27%	351	25%	276	25%	5,289	62%
Male	614	71%	1,146	74%	1,093	73%	1,043	75%	821	75%	3,283	38%
Unknown	1	0%	1	0%	1	0%	1	0%	2	0%	11	0%
Age												
19 & Younger	82	10%	106	7%	107	7%	70	5%	61	6%	1,298	15%
20-29	337	39%	497	32%	479	32%	459	33%	420	38%	3,929	46%
30-39	247	29%	461	30%	455	30%	443	32%	312	28%	1,671	19%
40 & Older	197	23%	481	31%	457	31%	423	30%	306	28%	1,685	20%
Ethnicity												
African American	32	4%	59	4%	57	4%	63	5%	40	4%	502	6%
American Indian	11	1%	30	2%	18	1%	17	1%	18	2%	177	2%
Asian/Filipino/Pac Islander	24	3%	28	2%	30	2%	28	2%	31	3%	416	5%
Hispanic/Latino	211	24%	412	27%	420	28%	413	30%	366	33%	2,554	30%
White	500	58%	932	60%	900	60%	812	58%	608	55%	4,480	52%
Two or more races	10	1%	23	1%	24	2%	22	2%	21	2%	413	5%
Unknown	75	9%	62	4%	49	3%	40	3%	15	1%	41	0%



Administration of Justice

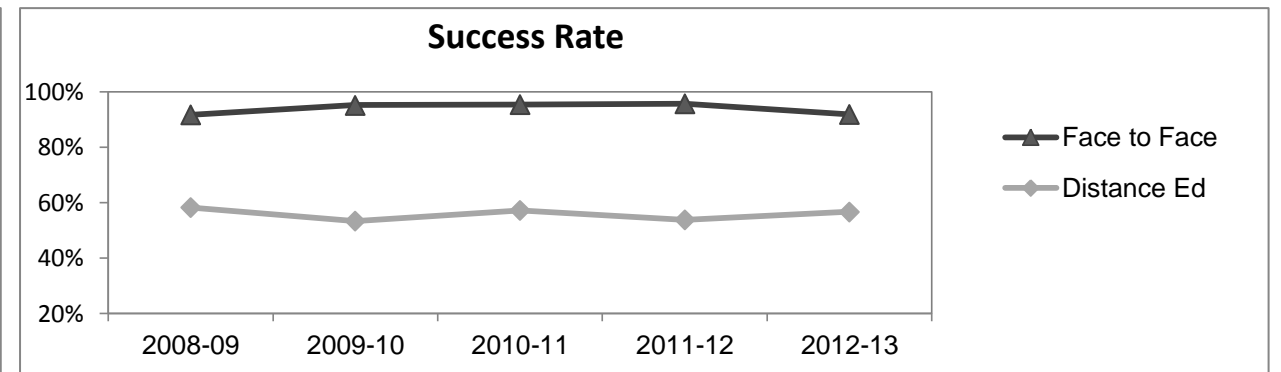
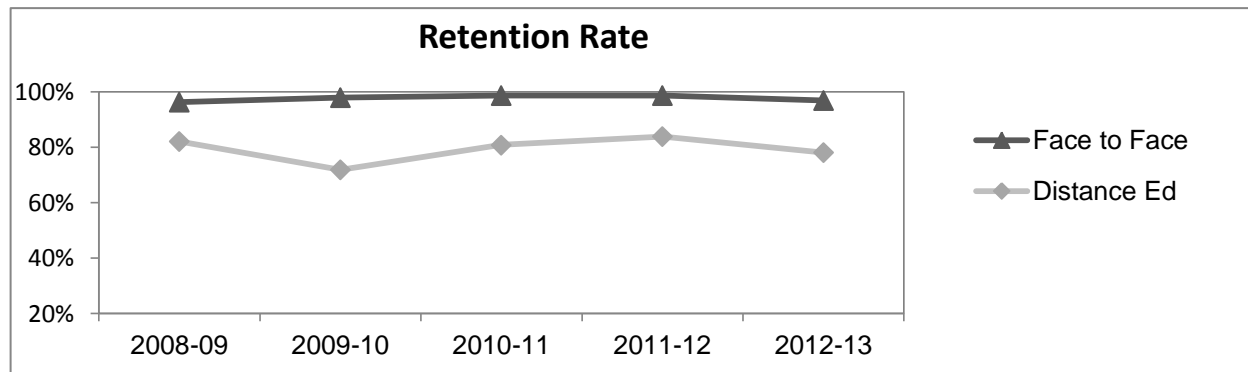
Course Enrollments - Productivity

	2008-09			2009-10			2010-11			2011-12			2012-13			2012-13		
	F-t-F ³	DE	Total	F-t-F ³	DE	Total	F-t-F ³	DE	Total	F-t-F ³	DE	Total	Subject			Collegewide		
	F-t-F ³	DE	Total	F-t-F ³	DE	Total	F-t-F ³	DE	Total	F-t-F ³	DE	Total	F-t-F ³	DE	Total	F-t-F ³	DE	Total
Number of Sections	56	15	71	147	16	163	140	16	156	157	12	169	74	12	86	511	519	1,030
Enrollment ⁴																		
Census	627	473	1,100	691	528	1,219	1,127	555	1,682	486	452	938	775	406	1,181	9,387	15,094	24,481
Students/Section ⁵	11	32	15	5	33	7	8	35	11	3	38	6	10	34	14	18	29	24
Productivity																		
FTES ⁶	233.4	43.7	277.1	221.5	49.1	270.6	177.6	51.7	229.2	249.5	42.1	291.6	182.6	37.8	220.5	1,368.1	1,573.3	2,941.4
FTEF ⁶	2.6	3.0	5.6	1.8	3.2	5.0	2.6	3.2	5.8	2.3	2.4	4.7	0.8	2.4	3.2	98.2	104.3	202.5
<i>Contract</i>			4%			4%			7%			15%			28%			38%
<i>Overload</i>			21%			0%			7%			0%			9%			12%
<i>Adjunct</i>			75%			92%			83%			85%			50%			36%
<i>Summer</i>			0%			4%			3%			0%			13%			14%
FTES/FTEF ⁷	89.8	14.6	49.5	123.1	15.3	54.1	68.3	16.2	39.5	108.5	17.5	62.1	228.3	15.8	68.9	13.9	15.1	14.5



Outcomes

	2008-09			2009-10			2010-11			2011-12			2012-13			2012-13		
	F-t-F ³	DE	Total	F-t-F ³	DE	Total	F-t-F ³	DE	Total	F-t-F ³	DE	Total	Subject			Collegewide		
	F-t-F ³	DE	Total	F-t-F ³	DE	Total	F-t-F ³	DE	Total	F-t-F ³	DE	Total	F-t-F ³	DE	Total	F-t-F ³	DE	Total
Retention Rate ⁸	96.2%	82.1%	91.7%	98.0%	71.9%	93.4%	98.7%	80.8%	95.0%	98.7%	83.8%	95.9%	96.9%	78.1%	92.0%	90.1%	78.5%	83.0%
Success Rate ⁸	91.7%	58.2%	80.8%	95.2%	53.3%	87.8%	95.4%	57.2%	87.4%	95.8%	53.8%	88.0%	91.9%	56.7%	82.7%	75.9%	61.0%	66.8%



Administration of Justice

Degrees - Certificates

													2012-13					
	2008-09			2009-10			2010-11			2011-12			Subject			Collegewide		
	AA	AS	CERT	AA	AS	CERT	AA	AS	CERT	AA	AS	CERT	AA	AS	CERT	AA	AS	CERT
Awards related to or contributed to by Public Services																		
Administration of Justice	0	7	7	0	12	6	0	17	6	0	2	3	0	6	3			
Fire Technology	0	0	0	0	0	0	0	1	0	0	0	0	0	0	0			
Total Awards by Type	0	7	7	0	12	6	0	18	6	0	2	3	0	6	3	193	61	121
% of total awards by type	0%	50%	50%	0%	67%	33%	0%	75%	25%	0%	40%	60%	0%	67%	33%	51%	16%	32%
Total Awards	14			18			24			5			9			375		

Notes

¹ **Source:** ODS Reports (July, 2013)

² **Student Headcount, *Unduplicated*:** Number of students enrolled on census day, where each student is counted one time.

³ **F-t-F:** Face to Face instructional delivery mode.

⁴ **Enrollment:** Every course in which students are enrolled on census day.

⁵ **Students/Section:** Student enrollments per section on census day. Cross-listed sections are not combined.

⁶ Acronyms **FTES** and **FTEF** represent full-time equivalent students and full-time equivalent faculty, respectively.

⁷ **FTES/FTEF:** A measurement of productivity where the generally accepted target is 17.5.

⁸ **Success rate numerator:** Number of course enrollments with a successful passing grade (A,B,C,P/CR).

Retention rate numerator: Number of course enrollments retained through the semester (grade = A,B,C,P/CR,D,F,NP/NC,I).

Success and Retention rate denominator: Number of enrollments retained (A,B,C,P/CR,D,F,NP/NC,I), withdrawn (W), and dropped after Census Day (DR).