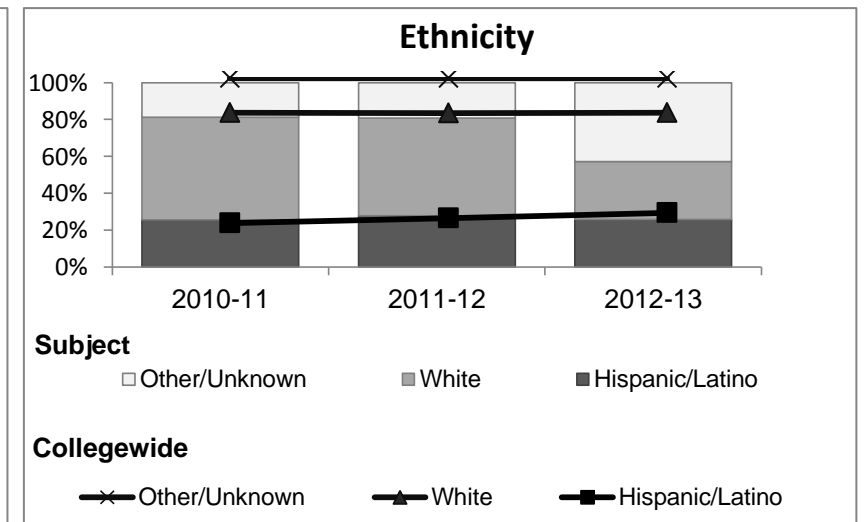
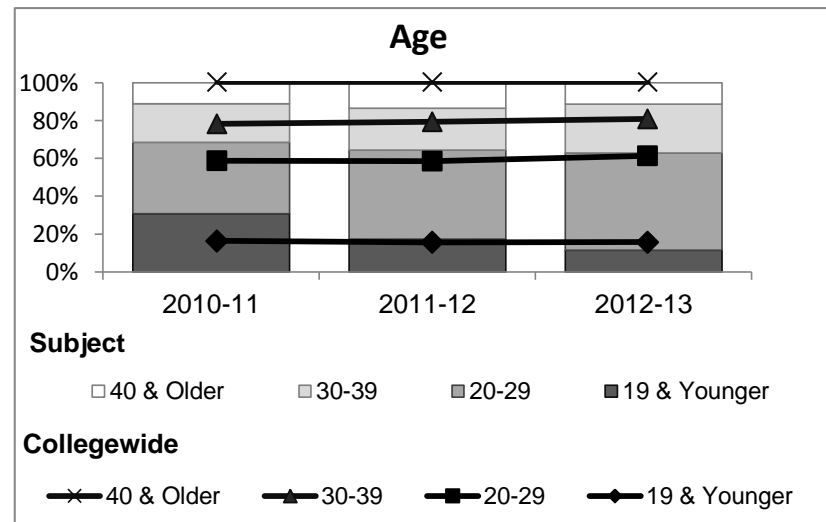
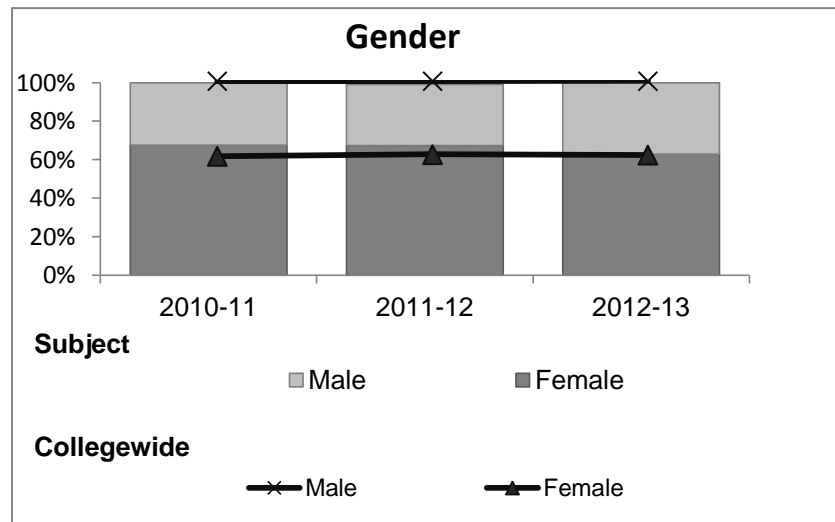


## Theatre

### Student Demographic Information

Student Headcount	2008-09		2009-10		2010-11		2011-12		2012-13		2012-13	
	#	% change - Prior Yr	#	% change - Prior Yr	#	% change - Prior Yr	#	% change - Prior Yr	Subject		Collegewide	
									#	% change - Prior Yr	#	% change - Prior Yr
Unduplicated <sup>2</sup>	102	--	124	22%	117	-6%	104	-11%	35	-66%	8,583	-16%

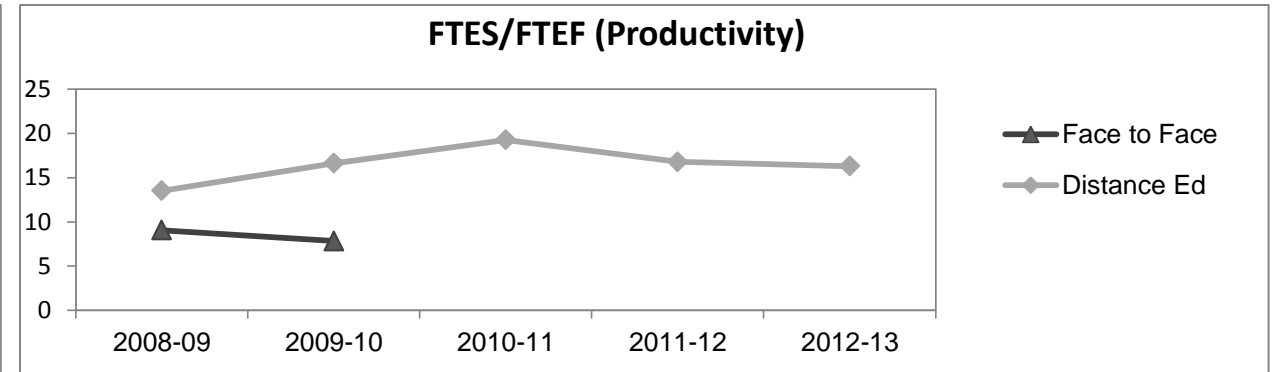
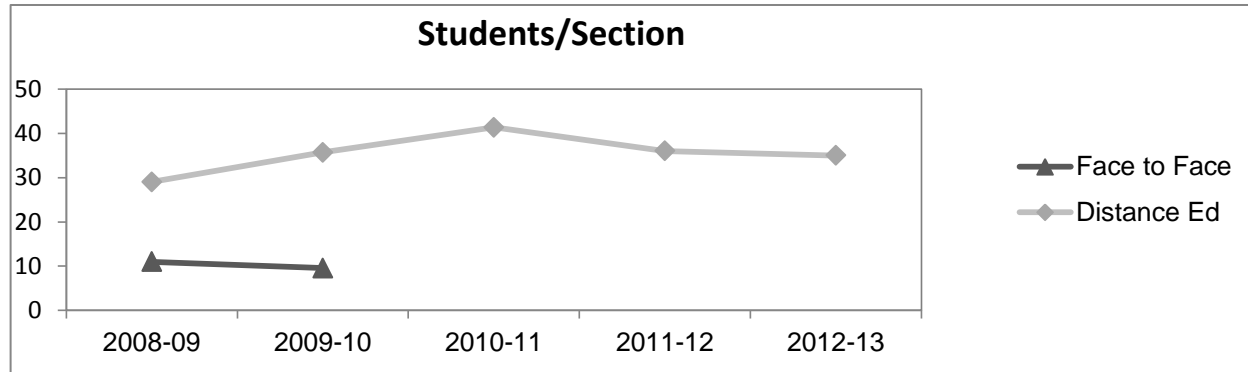
	2008-09		2009-10		2010-11		2011-12		2012-13		2012-13	
	#	%	#	%	#	%	#	%	Subject		Collegewide	
									#	%	#	%
<b>Gender</b>												
Female	54	53%	80	65%	79	68%	70	67%	22	63%	5,289	62%
Male	47	46%	41	33%	38	32%	33	32%	13	37%	3,283	38%
Unknown	1	1%	3	2%	0	0%	1	1%	0	0%	11	0%
<b>Age</b>												
19 & Younger	37	36%	43	35%	36	31%	18	17%	4	11%	1,298	15%
20-29	48	47%	57	46%	44	38%	49	47%	18	51%	3,929	46%
30-39	4	4%	15	12%	24	21%	23	22%	9	26%	1,671	19%
40 & Older	13	13%	9	7%	13	11%	14	13%	4	11%	1,685	20%
<b>Ethnicity</b>												
African American	3	3%	2	2%	11	9%	6	6%	6	17%	502	6%
American Indian	1	1%	2	2%	1	1%	0	0%	1	3%	177	2%
Asian/Filipino/Pac Islander	5	5%	5	4%	6	5%	5	5%	4	11%	416	5%
Hispanic/Latino	13	13%	37	30%	30	26%	29	28%	9	26%	2,554	30%
White	69	68%	70	56%	65	56%	55	53%	11	31%	4,480	52%
Two or more races	8	8%	5	4%	4	3%	9	9%	3	9%	413	5%
Unknown	3	3%	3	2%	0	0%	0	0%	1	3%	41	0%



## Theatre

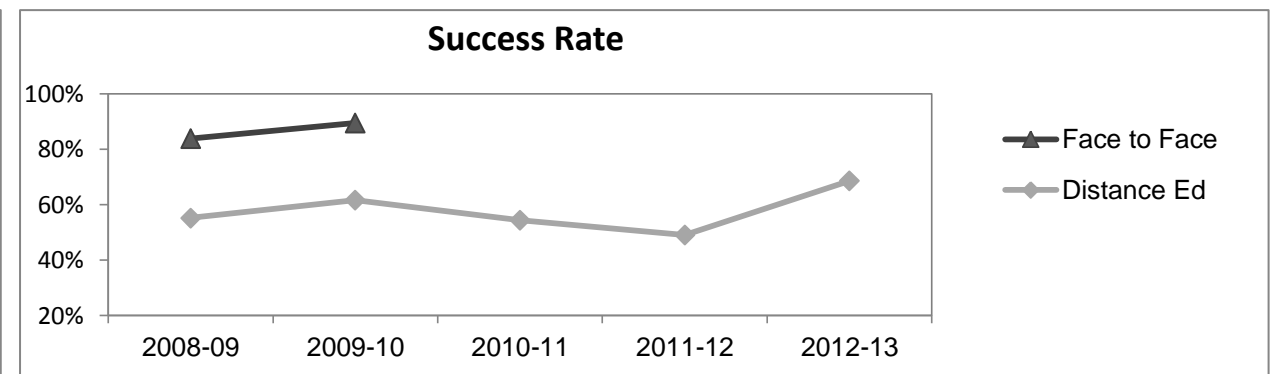
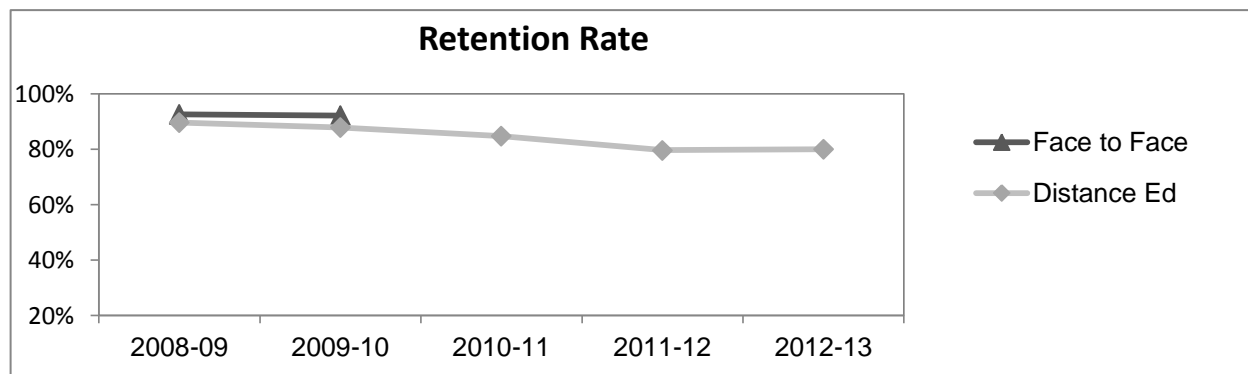
### Course Enrollments - Productivity

	2008-09			2009-10			2010-11			2011-12			2012-13			2012-13		
	F-t-F <sup>3</sup>	DE	Total	F-t-F <sup>3</sup>	DE	Total	F-t-F <sup>3</sup>	DE	Total	F-t-F <sup>3</sup>	DE	Total	Subject			Collegewide		
	F-t-F <sup>3</sup>	DE	Total	F-t-F <sup>3</sup>	DE	Total	F-t-F <sup>3</sup>	DE	Total	F-t-F <sup>3</sup>	DE	Total	F-t-F <sup>3</sup>	DE	Total	F-t-F <sup>3</sup>	DE	Total
Number of Sections	23	1	24	7	3	10	0	3	3	0	3	3	0	1	1	511	519	1,030
Enrollment <sup>4</sup>																		
Census	253	29	282	67	107	174	0	124	124	0	108	108	0	35	35	9,387	15,094	24,481
Students/Section <sup>5</sup>	11	29	12	10	36	17		41	41		36	36		35	35	18	29	24
Productivity																		
FTES <sup>6</sup>	26.0	2.7	28.7	7.8	10.0	17.8	0	11.5	11.5	0	10.1	10.1	0	3.3	3.3	1,368.1	1,573.3	2,941.4
FTEF <sup>6</sup>	2.9	0.2	3.1	1.0	0.6	1.6	0	0.6	0.6	0	0.6	0.6	0	0.2	0.2	98.2	104.3	202.5
<i>Contract</i>			65%			87%			0%			0%			0%			38%
<i>Overload</i>			28%			13%			67%			33%			0%			12%
<i>Adjunct</i>			0%			0%			0%			0%			0%			36%
<i>Summer</i>			7%			0%			33%			33%			100%			14%
FTES/FTEF <sup>7</sup>	9.1	13.5	9.4	7.8	16.6	11.1		19.2	19.2		16.8	16.8		16.3	16.3	13.9	15.1	14.5



### Outcomes

	2008-09			2009-10			2010-11			2011-12			2012-13			2012-13		
	F-t-F <sup>3</sup>	DE	Total	F-t-F <sup>3</sup>	DE	Total	F-t-F <sup>3</sup>	DE	Total	F-t-F <sup>3</sup>	DE	Total	Subject			Collegewide		
	F-t-F <sup>3</sup>	DE	Total	F-t-F <sup>3</sup>	DE	Total	F-t-F <sup>3</sup>	DE	Total	F-t-F <sup>3</sup>	DE	Total	F-t-F <sup>3</sup>	DE	Total	F-t-F <sup>3</sup>	DE	Total
Retention Rate <sup>8</sup>	92.6%	89.7%	92.1%	92.1%	87.9%	89.0%		84.8%	84.8%		79.6%	79.6%		80.0%	80.0%	90.1%	78.5%	83.0%
Success Rate <sup>8</sup>	83.9%	55.2%	79.2%	89.5%	61.7%	69.0%		54.4%	54.4%		49.1%	49.1%		68.6%	68.6%	75.9%	61.0%	66.8%



## Theatre

### Degrees - Certificates

													2012-13					
	2008-09			2009-10			2010-11			2011-12			Subject			Collegewide		
	AA	AS	CERT	AA	AS	CERT	AA	AS	CERT	AA	AS	CERT	AA	AS	CERT	AA	AS	CERT
Awards related to or contributed to by Visual & Performing Arts																		
Art	0	0	0	2	0	0	3	0	0	0	0	0	0	0	0			
Theatre Arts	0	0	0	0	0	0	1	0	0	0	0	0	0	0	0			
Fine Arts	0	0	0	1	0	0	4	0	0	2	0	0	0	0	0			
<b>Total Awards by Type</b>	0	0	0	3	0	0	8	0	0	2	0	0	0	0	0	193	61	121
<b>% of total awards by type</b>				100%	0%	0%	100%	0%	0%	100%	0%	0%				51%	16%	32%
<b>Total Awards</b>	0			3			8			2			0			375		
Liberal Arts/Arts & Humanities	3	0	0	13	0	0	33	0	0	37	0	0	42	0	0			
Web Design	0	7	2	0	4	1	0	1	1	0	2	3	0	2	3			
Digital Animation	0	6	0	0	2	0	0	0	0	0	0	1	0	0	0			
Digital Media	0	0	0	0	0	0	0	0	0	0	0	0	0	0	3			

**Notes**

- <sup>1</sup> **Source:** ODS Reports (July, 2013)
- <sup>2</sup> **Student Headcount, *Unduplicated*:** Number of students enrolled on census day, where each student is counted one time.
- <sup>3</sup> **F-t-F:** Face to Face instructional delivery mode.
- <sup>4</sup> **Enrollment:** Every course in which students are enrolled on census day.
- <sup>5</sup> **Students/Section:** Student enrollments per section on census day. Cross-listed sections are not combined.
- <sup>6</sup> Acronyms **FTES** and **FTEF** represent full-time equivalent students and full-time equivalent faculty, respectively.
- <sup>7</sup> **FTES/FTEF:** A measurement of productivity where the generally accepted target is 17.5.
- <sup>8</sup> **Success rate numerator:** Number of course enrollments with a successful passing grade (A,B,C,P/CR).
- Retention rate numerator:** Number of course enrollments retained through the semester (grade = A,B,C,P/CR,D,F,NP/NC,I).
- Success and Retention rate denominator:** Number of enrollments retained (A,B,C,P/CR,D,F,NP/NC,I), withdrawn (W), and dropped after Census Day (DR).