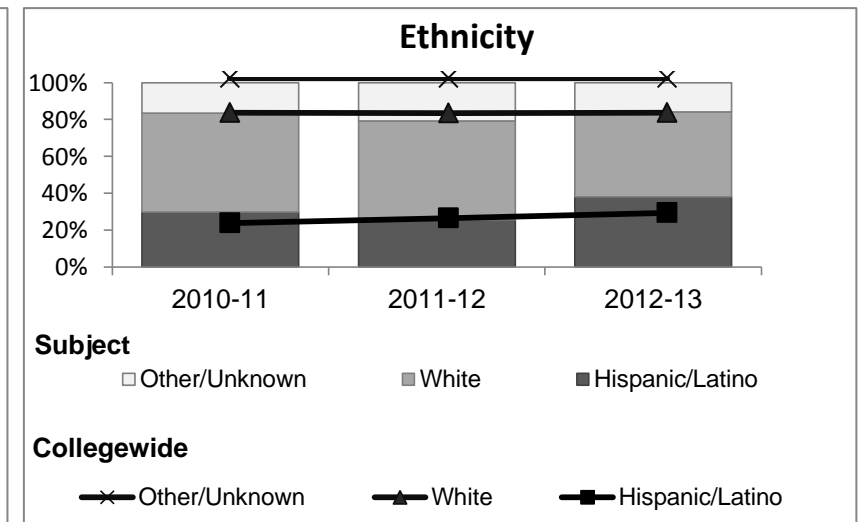
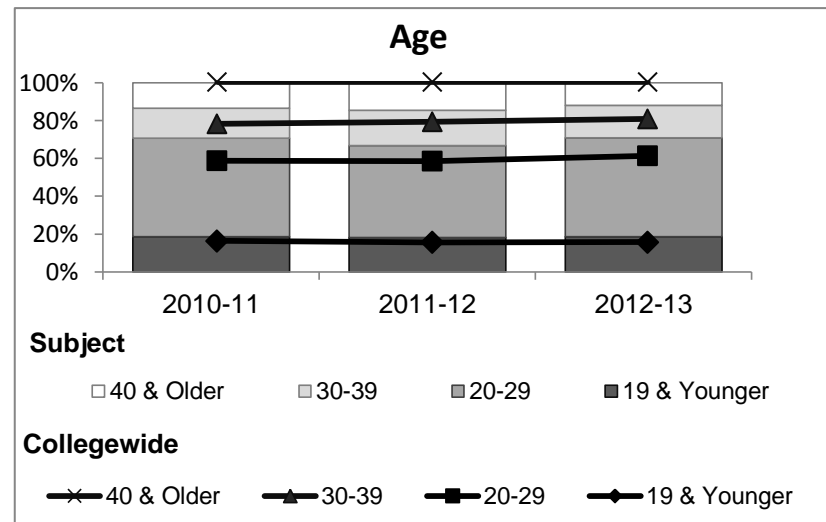
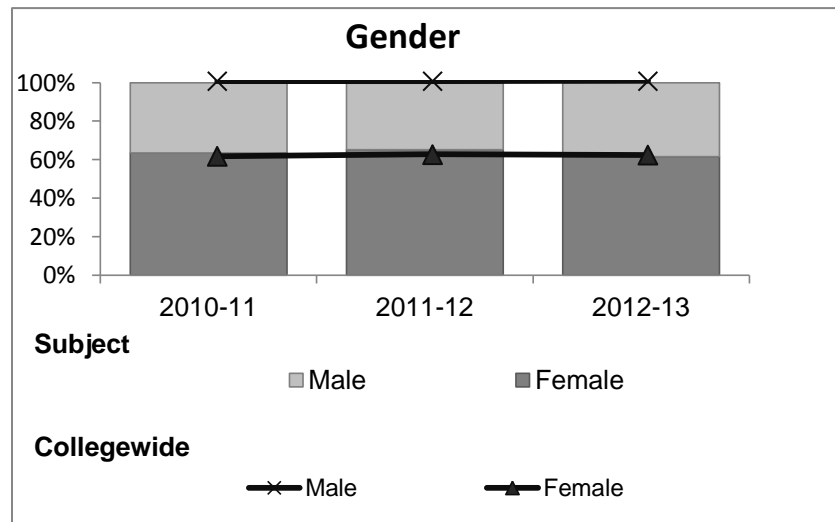


# Spanish

## Student Demographic Information

Student Headcount	2008-09		2009-10		2010-11		2011-12		2012-13		2012-13	
	#	% change - Prior Yr	#	% change - Prior Yr	#	% change - Prior Yr	#	% change - Prior Yr	Subject		Collegewide	
									#	% change - Prior Yr	#	% change - Prior Yr
Unduplicated <sup>2</sup>	692	--	652	-6%	734	13%	673	-8%	497	-26%	8,583	-16%

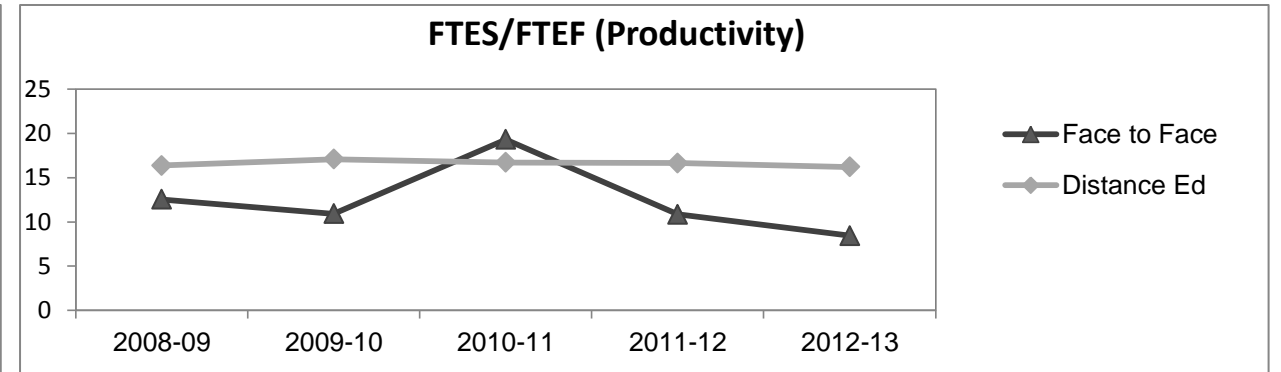
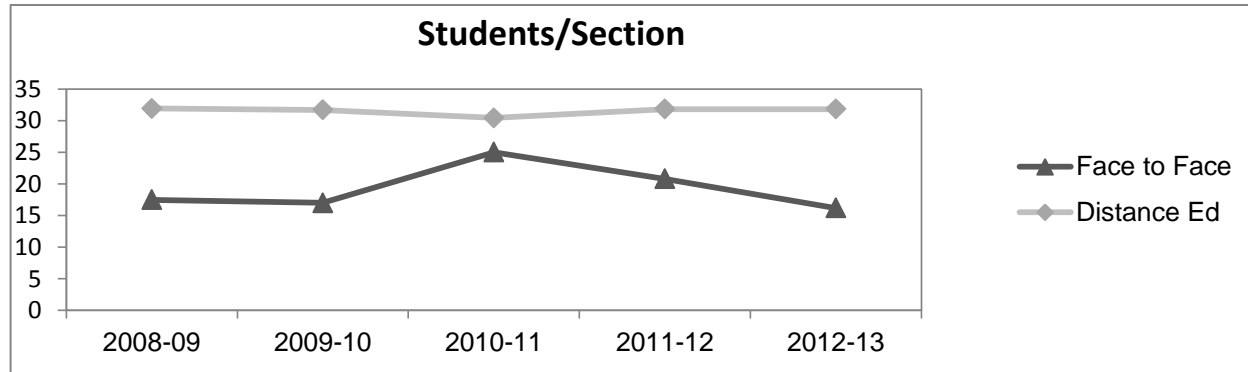
	2008-09		2009-10		2010-11		2011-12		2012-13		2012-13	
	#	%	#	%	#	%	#	%	Subject		Collegewide	
									#	%	#	%
<b>Gender</b>												
Female	448	65%	408	63%	466	63%	438	65%	306	62%	5,289	62%
Male	242	35%	242	37%	267	36%	233	35%	191	38%	3,283	38%
Unknown	2	0%	2	0%	1	0%	2	0%	0	0%	11	0%
<b>Age</b>												
19 & Younger	116	17%	106	16%	137	19%	122	18%	92	19%	1,298	15%
20-29	329	48%	318	49%	381	52%	327	49%	260	52%	3,929	46%
30-39	108	16%	92	14%	117	16%	126	19%	85	17%	1,671	19%
40 & Older	139	20%	136	21%	99	13%	98	15%	60	12%	1,685	20%
<b>Ethnicity</b>												
African American	41	6%	45	7%	48	7%	52	8%	35	7%	502	6%
American Indian	15	2%	9	1%	9	1%	11	2%	3	1%	177	2%
Asian/Filipino/Pac Islander	39	6%	31	5%	30	4%	38	6%	21	4%	416	5%
Hispanic/Latino	136	20%	156	24%	219	30%	173	26%	189	38%	2,554	30%
White	426	62%	371	57%	394	54%	360	53%	229	46%	4,480	52%
Two or more races	10	1%	16	2%	33	4%	37	5%	17	3%	413	5%
Unknown	25	4%	24	4%	1	0%	2	0%	3	1%	41	0%



## Spanish

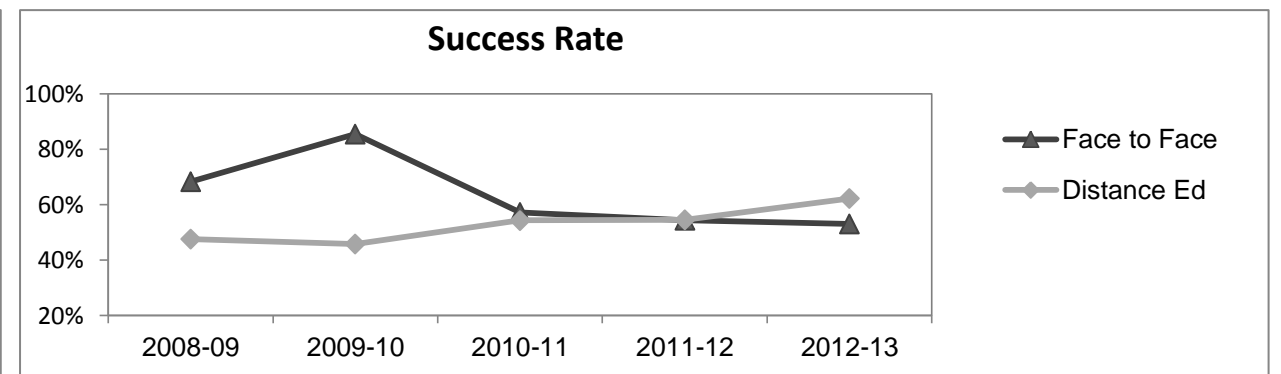
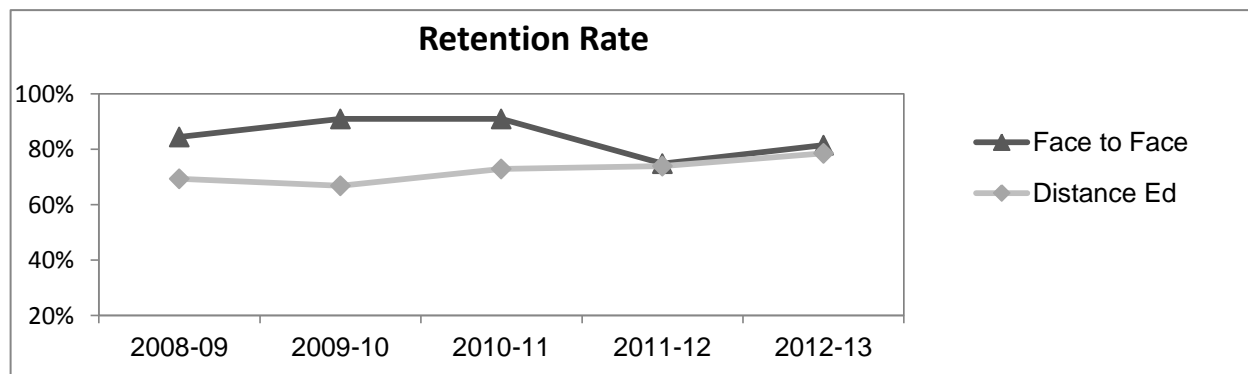
### Course Enrollments - Productivity

	2008-09			2009-10			2010-11			2011-12			2012-13			2012-13		
	F-t-F <sup>3</sup>	DE	Total	F-t-F <sup>3</sup>	DE	Total	F-t-F <sup>3</sup>	DE	Total	F-t-F <sup>3</sup>	DE	Total	Subject			Collegewide		
	F-t-F <sup>3</sup>	DE	Total	F-t-F <sup>3</sup>	DE	Total	F-t-F <sup>3</sup>	DE	Total	F-t-F <sup>3</sup>	DE	Total	F-t-F <sup>3</sup>	DE	Total	F-t-F <sup>3</sup>	DE	Total
Number of Sections	23	13	36	6	19	25	3	24	27	5	20	25	5	15	20	511	519	1,030
Enrollment <sup>4</sup>																		
Census	402	415	817	102	602	704	75	730	805	104	636	740	81	477	558	9,387	15,094	24,481
Students/Section <sup>5</sup>	17	32	23	17	32	28	25	30	30	21	32	30	16	32	28	18	29	24
Productivity																		
FTES <sup>6</sup>	46.0	63.2	109.2	12.0	94.5	106.4	12.9	112.4	125.3	18.1	99.8	117.9	14.1	73.5	87.5	1,368.1	1,573.3	2,941.4
FTEF <sup>6</sup>	3.7	3.9	7.5	1.1	5.5	6.6	0.7	6.7	7.4	1.7	6.0	7.7	1.7	4.5	6.2	98.2	104.3	202.5
<i>Contract</i>			41%			38%			39%			43%			53%			38%
<i>Overload</i>			16%			24%			14%			9%			12%			12%
<i>Adjunct</i>			19%			11%			18%			22%			16%			36%
<i>Summer</i>			25%			27%			30%			26%			19%			14%
FTES/FTEF <sup>7</sup>	12.5	16.4	14.5	10.9	17.1	16.1	19.3	16.7	16.9	10.9	16.6	15.4	8.4	16.2	14.1	13.9	15.1	14.5



### Outcomes

	2008-09			2009-10			2010-11			2011-12			2012-13			2012-13		
	F-t-F <sup>3</sup>	DE	Total	F-t-F <sup>3</sup>	DE	Total	F-t-F <sup>3</sup>	DE	Total	F-t-F <sup>3</sup>	DE	Total	Subject			Collegewide		
	F-t-F <sup>3</sup>	DE	Total	F-t-F <sup>3</sup>	DE	Total	F-t-F <sup>3</sup>	DE	Total	F-t-F <sup>3</sup>	DE	Total	F-t-F <sup>3</sup>	DE	Total	F-t-F <sup>3</sup>	DE	Total
Retention Rate <sup>8</sup>	84.4%	69.4%	76.4%	90.9%	66.8%	70.5%	90.9%	72.8%	74.5%	74.8%	73.9%	74.1%	81.5%	78.6%	79.0%	90.1%	78.5%	83.0%
Success Rate <sup>8</sup>	68.3%	47.6%	57.2%	85.5%	45.8%	51.9%	57.1%	54.3%	54.6%	54.4%	54.5%	54.5%	53.1%	62.2%	60.9%	75.9%	61.0%	66.8%



## Spanish

### Degrees - Certificates

													2012-13					
	2008-09			2009-10			2010-11			2011-12			Subject			Collegewide		
	AA	AS	CERT	AA	AS	CERT	AA	AS	CERT	AA	AS	CERT	AA	AS	CERT	AA	AS	CERT
Awards related to or contributed to by English																		
<b>Total Awards by Type</b>	0	0	0	0	0	0	0	0	0	0	0	0	0	0	0	193	61	121
<b>% of total awards by type</b>																51%	16%	32%
<b>Total Awards</b>	0			0			0			0			0			375		
Liberal Arts/Arts & Humanities	3	0	0	13	0	0	33	0	0	37	0	0	42	0	0			
Human Services	0	0	0	0	6	0	0	5	0	0	8	0	0	6	0			
Human Services Worker	0	0	0	0	0	1	0	0	3	0	0	8	0	0	9			
Web Design	0	7	2	0	4	1	0	1	1	0	2	3	0	2	3			

**Notes**

- <sup>1</sup> **Source:** ODS Reports (July, 2013)
- <sup>2</sup> **Student Headcount, *Unduplicated*:** Number of students enrolled on census day, where each student is counted one time.
- <sup>3</sup> **F-t-F:** Face to Face instructional delivery mode.
- <sup>4</sup> **Enrollment:** Every course in which students are enrolled on census day.
- <sup>5</sup> **Students/Section:** Student enrollments per section on census day. Cross-listed sections are not combined.
- <sup>6</sup> Acronyms **FTES** and **FTEF** represent full-time equivalent students and full-time equivalent faculty, respectively.
- <sup>7</sup> **FTES/FTEF:** A measurement of productivity where the generally accepted target is 17.5.
- <sup>8</sup> **Success rate numerator:** Number of course enrollments with a successful passing grade (A,B,C,P/CR).
- Retention rate numerator:** Number of course enrollments retained through the semester (grade = A,B,C,P/CR,D,F,NP/NC,I).
- Success and Retention rate denominator:** Number of enrollments retained (A,B,C,P/CR,D,F,NP/NC,I), withdrawn (W), and dropped after Census Day (DR).