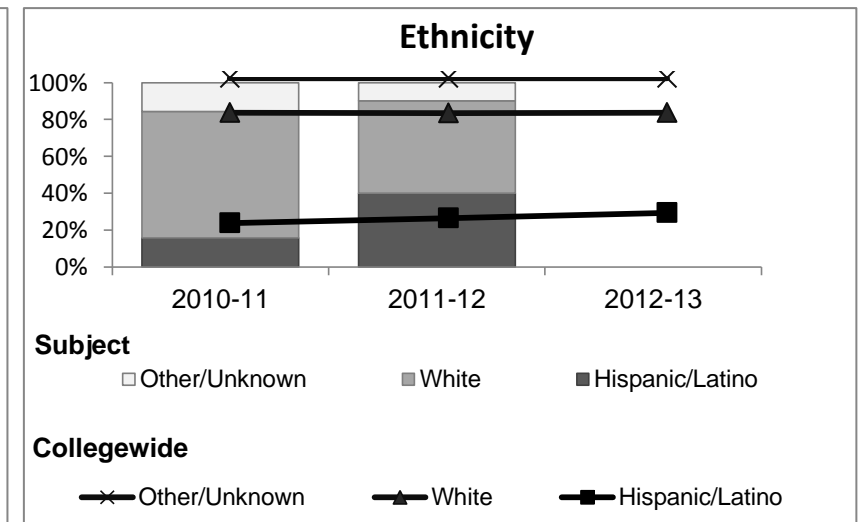
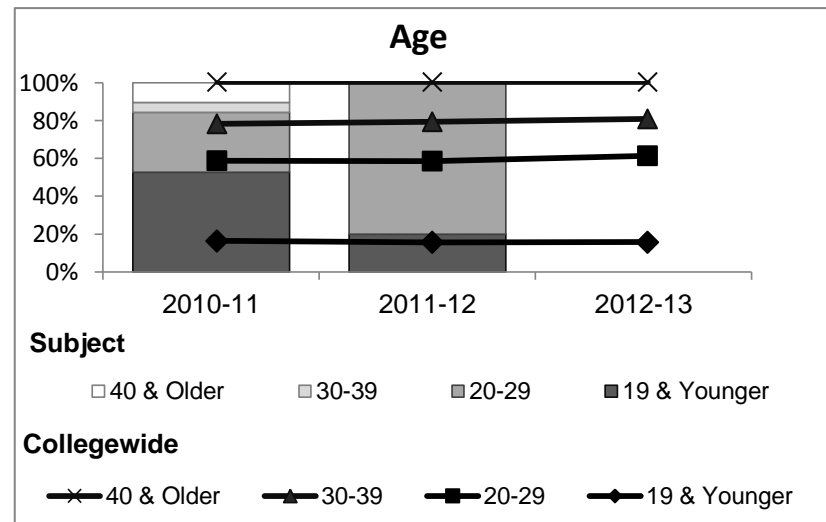
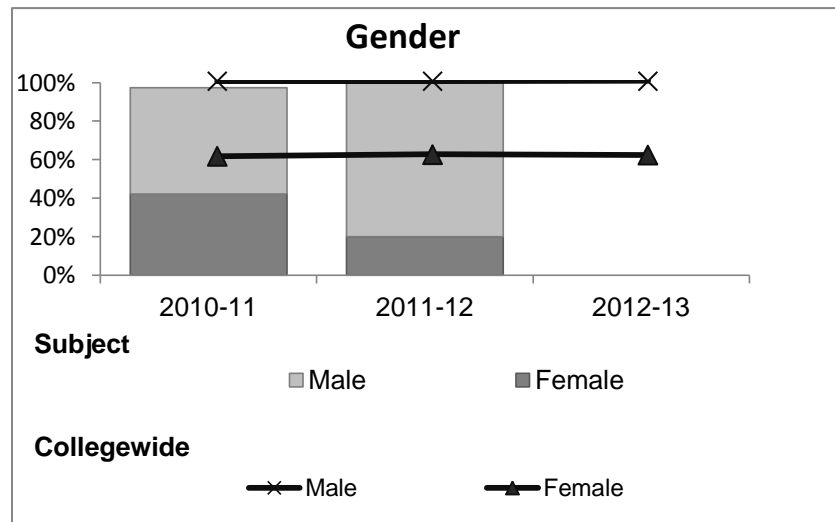


## Russian

### Student Demographic Information

Student Headcount	2008-09		2009-10		2010-11		2011-12		2012-13			
	#	% change - Prior Yr	#	% change - Prior Yr	#	% change - Prior Yr	#	% change - Prior Yr	Subject		Collegewide	
									#	% change - Prior Yr	#	% change - Prior Yr
Unduplicated <sup>2</sup>	29	--	33	14%	38	15%	10	-74%	-		8,583	-16%

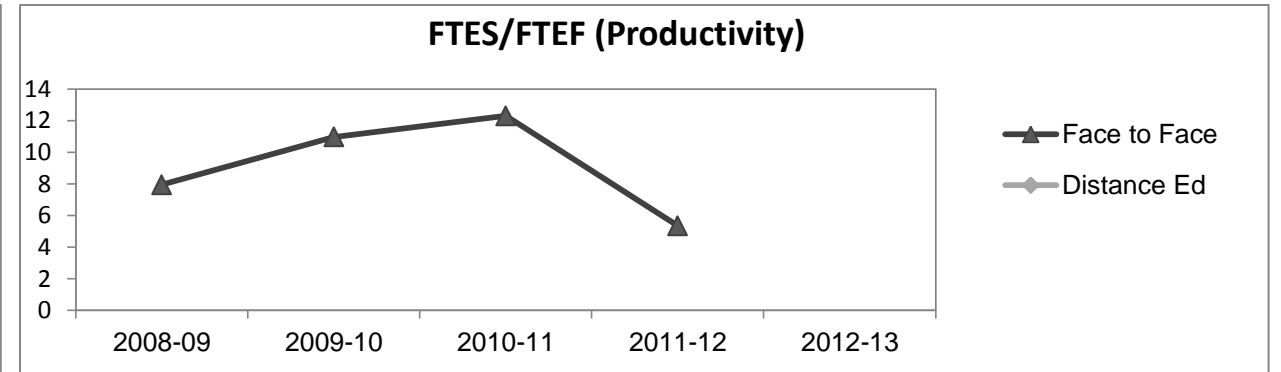
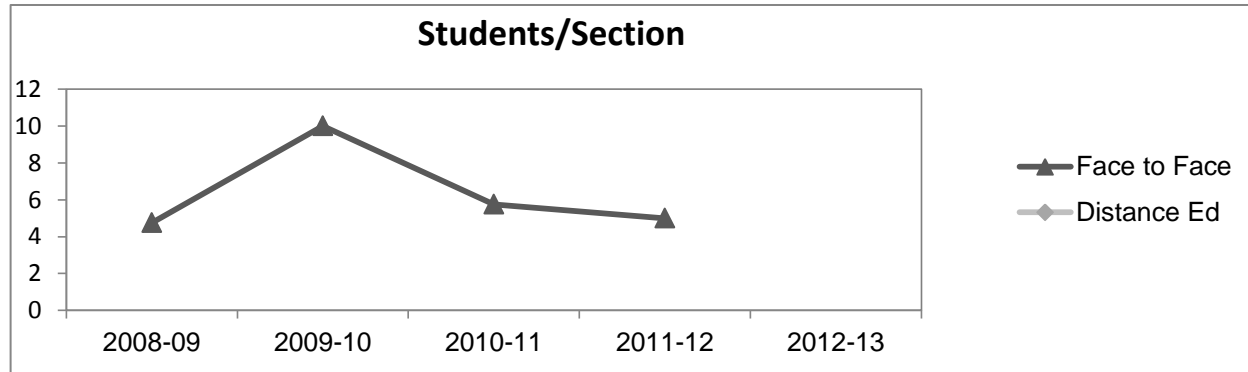
	2008-09		2009-10		2010-11		2011-12		2012-13				
	#	%	#	%	#	%	#	%	Subject		Collegewide		
									#	%	#	%	
<b>Gender</b>													
Female	8	28%	10	30%	16	42%	2	20%			5,289	62%	
Male	20	69%	23	70%	21	55%	8	80%			3,283	38%	
Unknown	1	3%	0	0%	1	3%	0	0%			11	0%	
<b>Age</b>													
19 & Younger	11	38%	14	42%	20	53%	2	20%			1,298	15%	
20-29	8	28%	11	33%	12	32%	8	80%			3,929	46%	
30-39	2	7%	4	12%	2	5%	0	0%			1,671	19%	
40 & Older	8	28%	4	12%	4	11%	0	0%			1,685	20%	
<b>Ethnicity</b>													
African American	0	0%	1	3%	0	0%	0	0%			502	6%	
American Indian	0	0%	0	0%	0	0%	0	0%			177	2%	
Asian/Filipino/Pac Islander	0	0%	2	6%	0	0%	0	0%			416	5%	
Hispanic/Latino	3	10%	5	15%	6	16%	4	40%			2,554	30%	
White	24	83%	22	67%	26	68%	5	50%			4,480	52%	
Two or more races	1	3%	2	6%	6	16%	1	10%			413	5%	
Unknown	1	3%	1	3%	0	0%	0	0%			41	0%	



## Russian

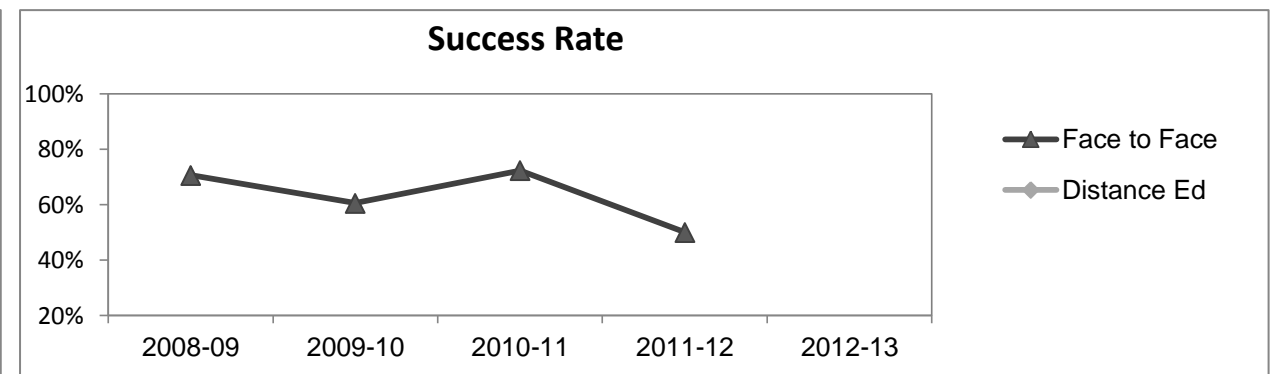
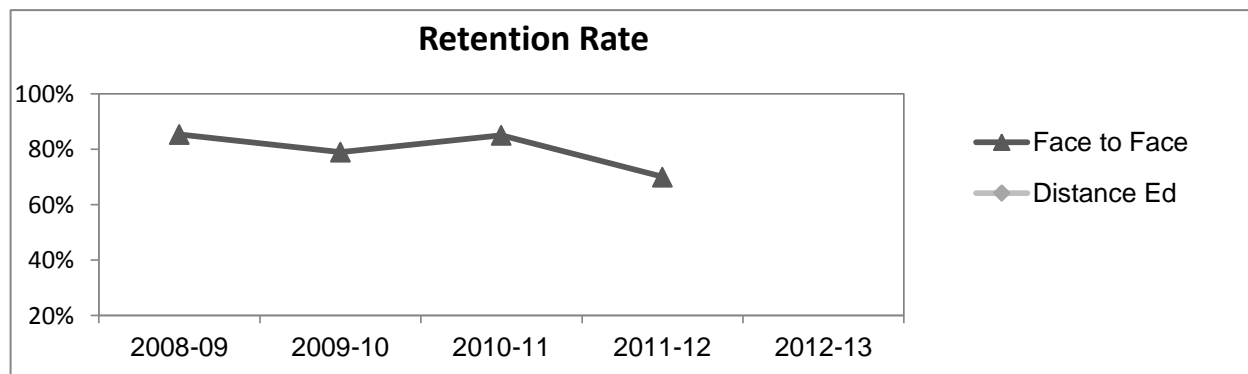
### Course Enrollments - Productivity

	2008-09			2009-10			2010-11			2011-12			2012-13			2012-13		
	F-t-F <sup>3</sup>	DE	Total	F-t-F <sup>3</sup>	DE	Total	F-t-F <sup>3</sup>	DE	Total	F-t-F <sup>3</sup>	DE	Total	Subject			Collegewide		
	F-t-F <sup>3</sup>	DE	Total	F-t-F <sup>3</sup>	DE	Total	F-t-F <sup>3</sup>	DE	Total	F-t-F <sup>3</sup>	DE	Total	F-t-F <sup>3</sup>	DE	Total	F-t-F <sup>3</sup>	DE	Total
Number of Sections	8	0	8	4	0	4	8	0	8	2	0	2	0	0	0	511	519	1,030
Enrollment <sup>4</sup>																		
Census	38	0	38	40	0	40	46	0	46	10	0	10	0	0	0	9,387	15,094	24,481
Students/Section <sup>5</sup>	5		5	10		10	6		6	5		5			18	29	24	
Productivity																		
FTES <sup>6</sup>	4.2	0	4.2	5.9	0	5.9	6.6	0	6.6	1.4	0	1.4	0	0	0.0	1,368.1	1,573.3	2,941.4
FTEF <sup>6</sup>	0.5	0	0.5	0.5	0	0.5	0.5	0	0.5	0.3	0	0.3	0	0	0.0	98.2	104.3	202.5
Contract			0%			0%			0%			0%						38%
Overload			0%			0%			0%			0%						12%
Adjunct			100%			100%			100%			100%						36%
Summer			0%			0%			0%			0%						14%
FTES/FTEF <sup>7</sup>	7.9		7.9	11.0		11.0	12.3		12.3	5.3		5.3			13.9	15.1	14.5	



### Outcomes

	2008-09			2009-10			2010-11			2011-12			2012-13			2012-13		
	F-t-F <sup>3</sup>	DE	Total	F-t-F <sup>3</sup>	DE	Total	F-t-F <sup>3</sup>	DE	Total	F-t-F <sup>3</sup>	DE	Total	Subject			Collegewide		
	F-t-F <sup>3</sup>	DE	Total	F-t-F <sup>3</sup>	DE	Total	F-t-F <sup>3</sup>	DE	Total	F-t-F <sup>3</sup>	DE	Total	F-t-F <sup>3</sup>	DE	Total	F-t-F <sup>3</sup>	DE	Total
Retention Rate <sup>8</sup>	85.3%		85.3%	78.9%		78.9%	85.1%		85.1%	70.0%		70.0%				90.1%	78.5%	83.0%
Success Rate <sup>8</sup>	70.6%		70.6%	60.5%		60.5%	72.3%		72.3%	50.0%		50.0%				75.9%	61.0%	66.8%



## Russian

### Degrees - Certificates

													2012-13					
	2008-09			2009-10			2010-11			2011-12			Subject			Collegewide		
	AA	AS	CERT	AA	AS	CERT	AA	AS	CERT	AA	AS	CERT	AA	AS	CERT	AA	AS	CERT
Awards related to or contributed to by English																		
<b>Total Awards by Type</b>	0	0	0	0	0	0	0	0	0	0	0	0	0	0	0	193	61	121
<b>% of total awards by type</b>																51%	16%	32%
<b>Total Awards</b>	0			0			0			0			0			375		
Liberal Arts/Arts & Humanities	3	0	0	13	0	0	33	0	0	37	0	0	42	0	0			
Human Services	0	0	0	0	6	0	0	5	0	0	8	0	0	6	0			
Human Services Worker	0	0	0	0	0	1	0	0	3	0	0	8	0	0	9			
Web Design	0	7	2	0	4	1	0	1	1	0	2	3	0	2	3			

**Notes**

- <sup>1</sup> **Source:** ODS Reports (July, 2013)
- <sup>2</sup> **Student Headcount, *Unduplicated*:** Number of students enrolled on census day, where each student is counted one time.
- <sup>3</sup> **F-t-F:** Face to Face instructional delivery mode.
- <sup>4</sup> **Enrollment:** Every course in which students are enrolled on census day.
- <sup>5</sup> **Students/Section:** Student enrollments per section on census day. Cross-listed sections are not combined.
- <sup>6</sup> Acronyms **FTES** and **FTEF** represent full-time equivalent students and full-time equivalent faculty, respectively.
- <sup>7</sup> **FTES/FTEF:** A measurement of productivity where the generally accepted target is 17.5.
- <sup>8</sup> **Success rate numerator:** Number of course enrollments with a successful passing grade (A,B,C,P/CR).
- Retention rate numerator:** Number of course enrollments retained through the semester (grade = A,B,C,P/CR,D,F,NP/NC,I).
- Success and Retention rate denominator:** Number of enrollments retained (A,B,C,P/CR,D,F,NP/NC,I), withdrawn (W), and dropped after Census Day (DR).