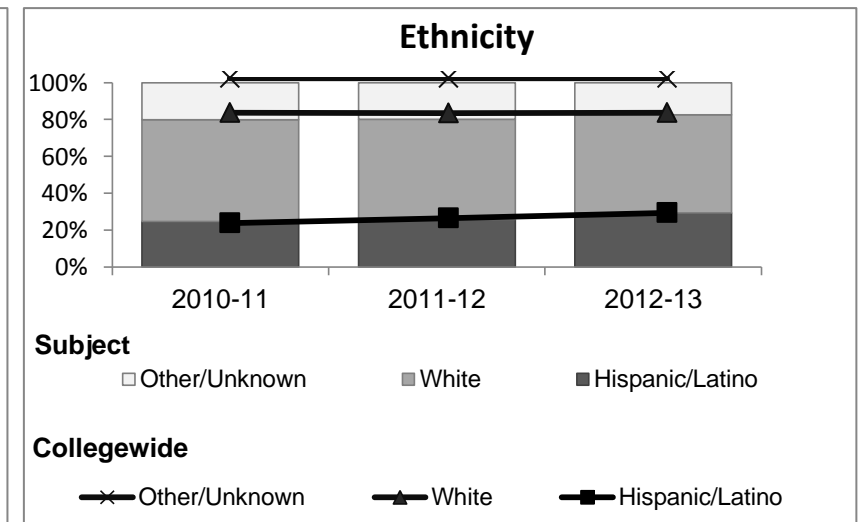
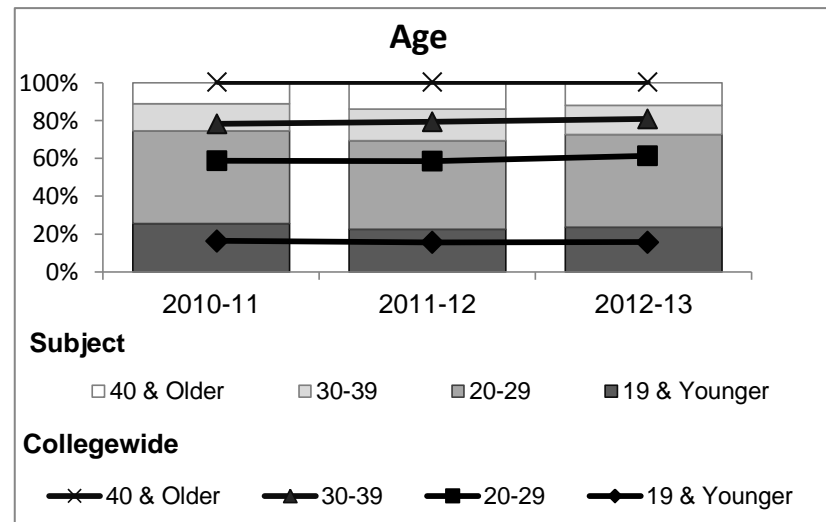
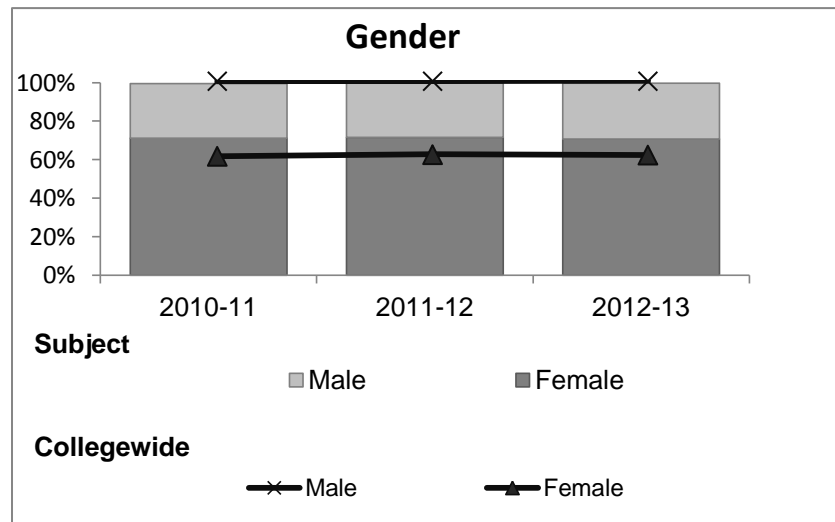


Psychology

Student Demographic Information

Student Headcount	2008-09		2009-10		2010-11		2011-12		2012-13		2012-13	
	#	% change - Prior Yr	#	% change - Prior Yr	#	% change - Prior Yr	#	% change - Prior Yr	Subject		Collegewide	
									#	% change - Prior Yr	#	% change - Prior Yr
Unduplicated ²	842	--	1,010	20%	1,288	28%	1,200	-7%	736	-39%	8,583	-16%

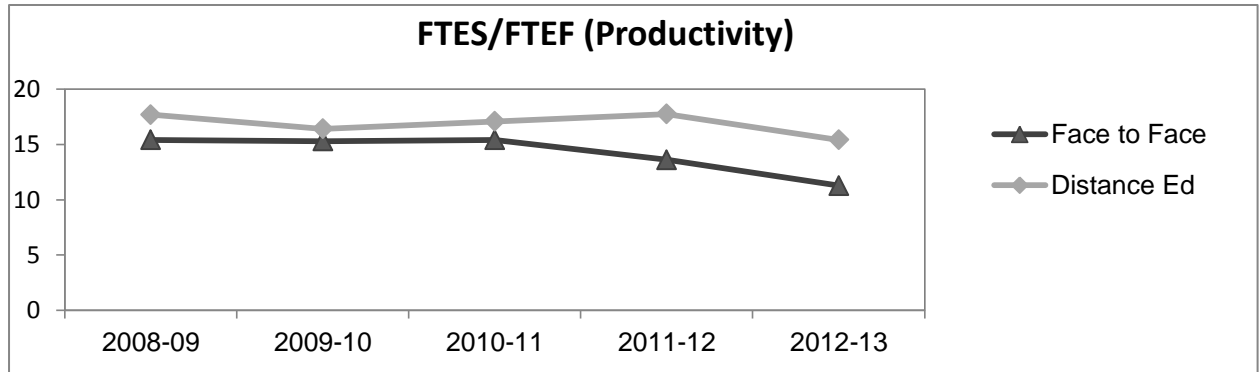
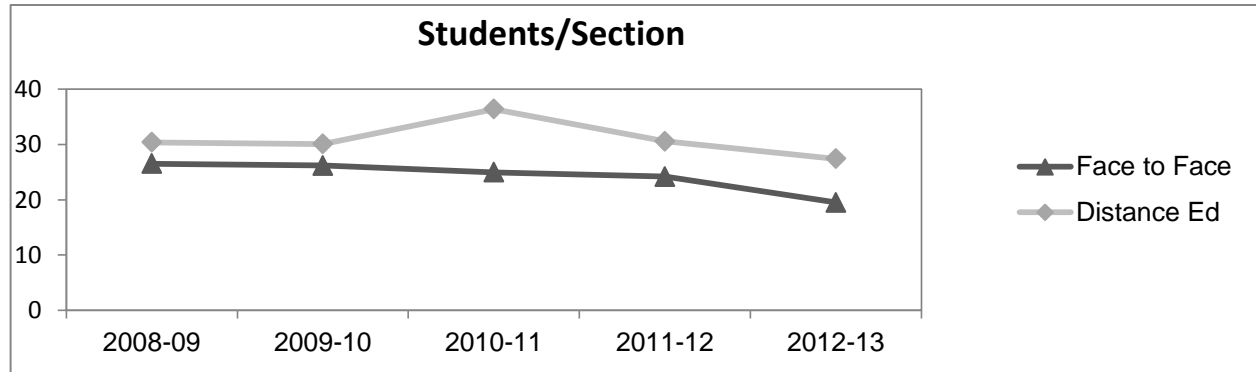
	2008-09		2009-10		2010-11		2011-12		2012-13		2012-13	
	#	%	#	%	#	%	#	%	Subject		Collegewide	
									#	%	#	%
Gender												
Female	588	70%	705	70%	915	71%	858	72%	521	71%	5,289	62%
Male	251	30%	302	30%	367	28%	340	28%	213	29%	3,283	38%
Unknown	3	0%	3	0%	6	0%	2	0%	2	0%	11	0%
Age												
19 & Younger	281	33%	292	29%	329	26%	269	22%	174	24%	1,298	15%
20-29	330	39%	462	46%	631	49%	564	47%	361	49%	3,929	46%
30-39	128	15%	131	13%	185	14%	199	17%	112	15%	1,671	19%
40 & Older	103	12%	125	12%	143	11%	168	14%	89	12%	1,685	20%
Ethnicity												
African American	38	5%	53	5%	70	5%	80	7%	30	4%	502	6%
American Indian	16	2%	23	2%	30	2%	30	3%	22	3%	177	2%
Asian/Filipino/Pac Islander	49	6%	35	3%	81	6%	70	6%	31	4%	416	5%
Hispanic/Latino	147	17%	183	18%	317	25%	309	26%	216	29%	2,554	30%
White	529	63%	662	66%	712	55%	653	54%	391	53%	4,480	52%
Two or more races	39	5%	39	4%	75	6%	56	5%	45	6%	413	5%
Unknown	24	3%	15	1%	3	0%	2	0%	1	0%	41	0%



Psychology

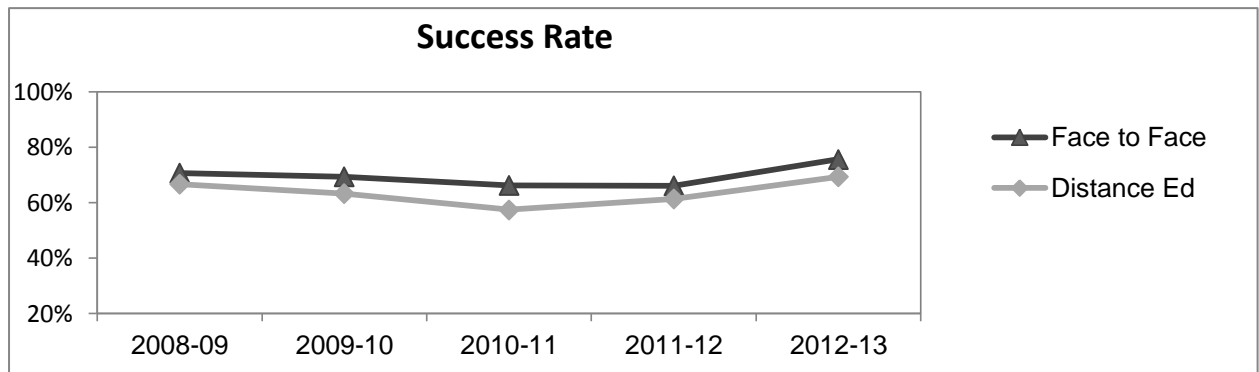
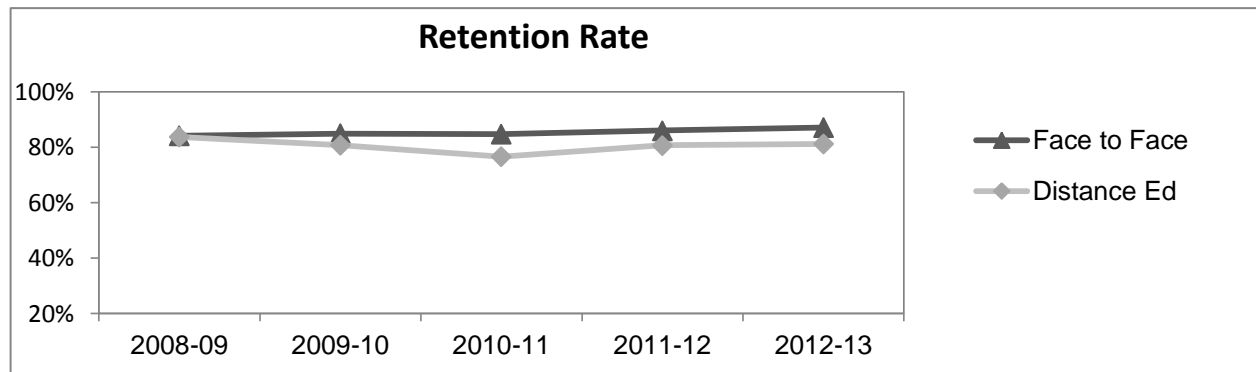
Course Enrollments - Productivity

	2008-09						2009-10			2010-11			2011-12			2012-13		
	Subject			Collegewide														
	F-t-F ³	DE	Total	F-t-F ³	DE	Total	F-t-F ³	DE	Total	F-t-F ³	DE	Total	F-t-F ³	DE	Total	F-t-F ³	DE	Total
Number of Sections	18	16	34	19	22	41	19	27	46	16	32	48	8	25	33	511	519	1,030
Enrollment ⁴																		
Census	477	486	963	497	661	1,158	474	982	1,456	387	977	1,364	156	685	841	9,387	15,094	24,481
Students/Section ⁵	27	30	28	26	30	28	25	36	32	24	31	28	20	27	25	18	29	24
Productivity																		
FTES ⁶	50.3	46.0	96.3	53.0	62.3	115.3	50.4	91.5	141.8	40.8	92.3	133.1	16.5	64.7	81.2	1,368.1	1,573.3	2,941.4
FTEF ⁶	3.3	2.6	5.9	3.5	3.8	7.3	3.3	5.4	8.6	3.0	5.2	8.2	1.5	4.2	5.7	98.2	104.3	202.5
<i>Contract</i>			44%			52%			40%			39%			35%			38%
<i>Overload</i>			15%			15%			14%			22%			15%			12%
<i>Adjunct</i>			20%			19%			23%			24%			35%			36%
<i>Summer</i>			20%			14%			23%			15%			14%			14%
FTES/FTEF ⁷	15.4	17.7	16.4	15.3	16.4	15.9	15.4	17.1	16.4	13.6	17.7	16.2	11.3	15.4	14.3	13.9	15.1	14.5



Outcomes

	2008-09						2009-10			2010-11			2011-12			2012-13		
	Subject			Collegewide														
	F-t-F ³	DE	Total	F-t-F ³	DE	Total	F-t-F ³	DE	Total	F-t-F ³	DE	Total	F-t-F ³	DE	Total	F-t-F ³	DE	Total
Retention Rate ⁸	84.2%	83.6%	83.9%	84.9%	80.7%	82.5%	84.8%	76.6%	79.2%	86.0%	80.7%	82.2%	87.2%	81.2%	82.3%	90.1%	78.5%	83.0%
Success Rate ⁸	70.7%	66.7%	68.7%	69.4%	63.2%	65.9%	66.2%	57.4%	60.2%	66.1%	61.3%	62.7%	75.6%	69.3%	70.5%	75.9%	61.0%	66.8%



Psychology

Degrees - Certificates

													2012-13					
	2008-09			2009-10			2010-11			2011-12			Subject			Collegewide		
	AA	AS	CERT	AA	AS	CERT	AA	AS	CERT	AA	AS	CERT	AA	AS	CERT	AA	AS	CERT
Awards related to or contributed to by Social Science																		
Social Science	30	0	0	21	0	0	13	0	0	1	0	0	3	0	0			
Humanities	3	0	0	3	0	0	3	0	0	0	0	0	0	0	0			
Total Awards by Type	33	0	0	24	0	0	16	0	0	1	0	0	3	0	0	193	61	121
% of total awards by type	100%	0%	0%	100%	0%	0%	100%	0%	0%	100%	0%	0%	100%	0%	0%	51%	16%	32%
Total Awards	33			24			16			1			3			375		
Liberal Arts/Social & Behvrl	28	0	0	24	0	0	79	0	0	58	0	0	62	0	0			
Liberal Arts/Math & Science	3	0	0	14	0	0	21	0	0	23	0	0	44	0	0			
Business Administration	2	9	3	13	7	1	19	7	1	23	3	0	24	1	0			
Liberal Arts/Arts & Humanities	3	0	0	13	0	0	33	0	0	37	0	0	42	0	0			
Human Services	0	0	0	0	6	0	0	5	0	0	8	0	0	6	0			
Human Services Worker	0	0	0	0	0	1	0	0	3	0	0	8	0	0	9			
Administration of Justice	0	7	7	0	12	6	0	17	6	0	2	3	0	6	3			

Notes¹ **Source:** ODS Reports (July, 2013)² **Student Headcount, *Unduplicated*:** Number of students enrolled on census day, where each student is counted one time.³ **F-t-F:** Face to Face instructional delivery mode.⁴ **Enrollment:** Every course in which students are enrolled on census day.⁵ **Students/Section:** Student enrollments per section on census day. Cross-listed sections are not combined.⁶ Acronyms **FTES** and **FTEF** represent full-time equivalent students and full-time equivalent faculty, respectively.⁷ **FTES/FTEF:** A measurement of productivity where the generally accepted target is 17.5.⁸ **Success rate numerator:** Number of course enrollments with a successful passing grade (A,B,C,P/CR).**Retention rate numerator:** Number of course enrollments retained through the semester (grade = A,B,C,P/CR,D,F,NP/NC,I).**Success and Retention rate denominator:** Number of enrollments retained (A,B,C,P/CR,D,F,NP/NC,I), withdrawn (W), and dropped after Census Day (DR).