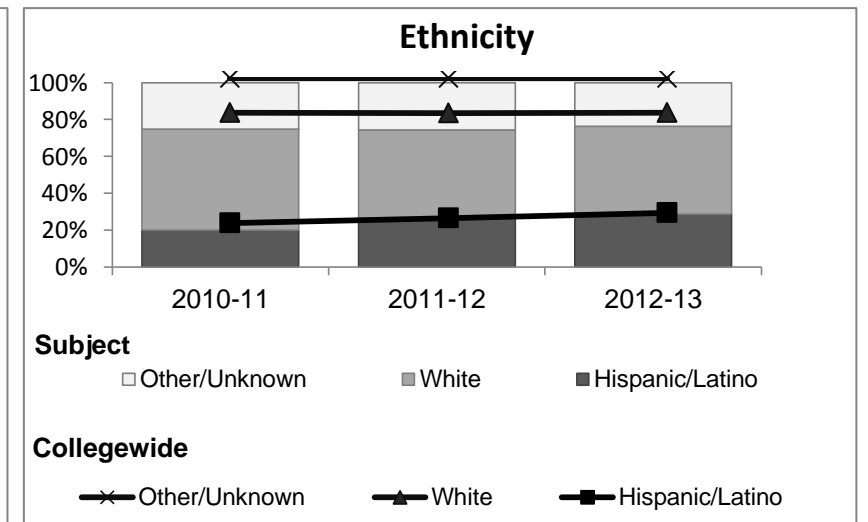
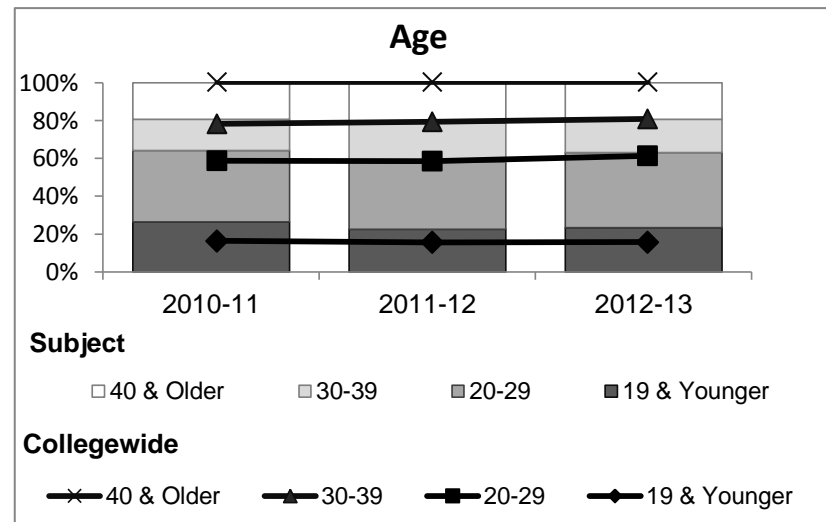
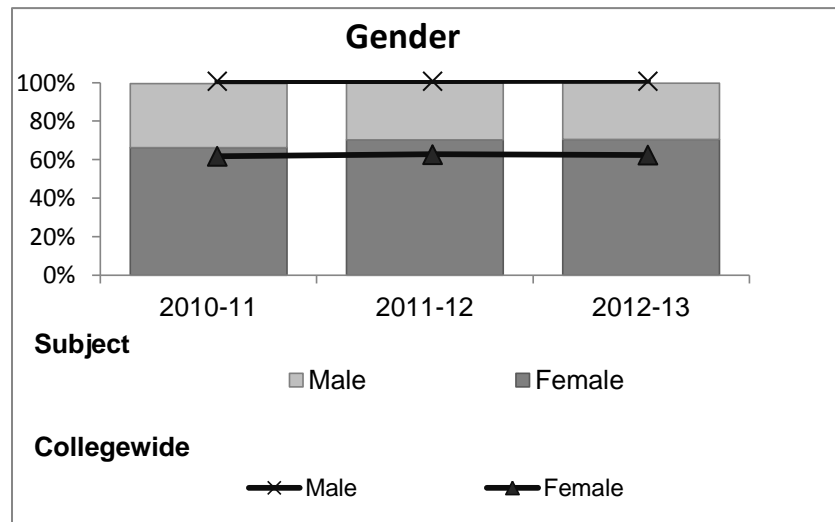


Personal Development

Student Demographic Information

Student Headcount	2008-09		2009-10		2010-11		2011-12		2012-13		2012-13	
	#	% change - Prior Yr	#	% change - Prior Yr	#	% change - Prior Yr	#	% change - Prior Yr	Subject		Collegewide	
									#	% change - Prior Yr	#	% change - Prior Yr
Unduplicated ²	788	--	768	-3%	683	-11%	473	-31%	401	-15%	8,583	-16%

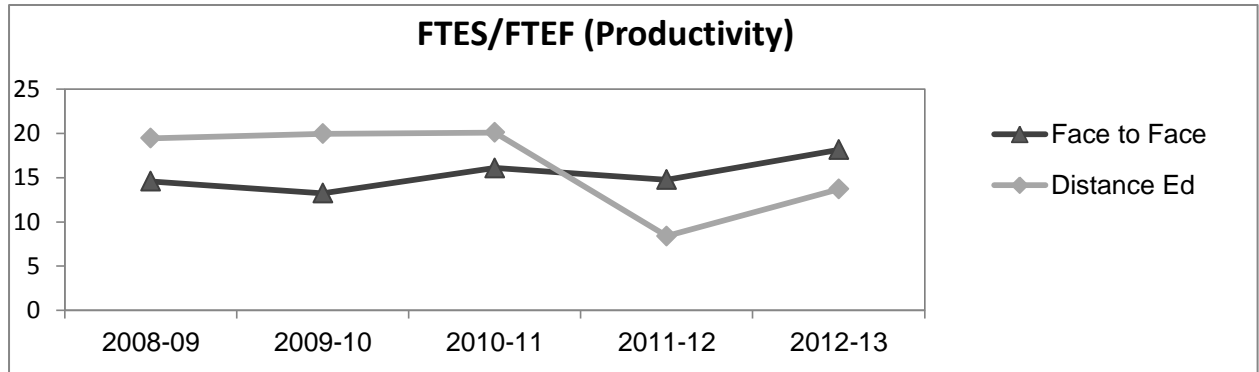
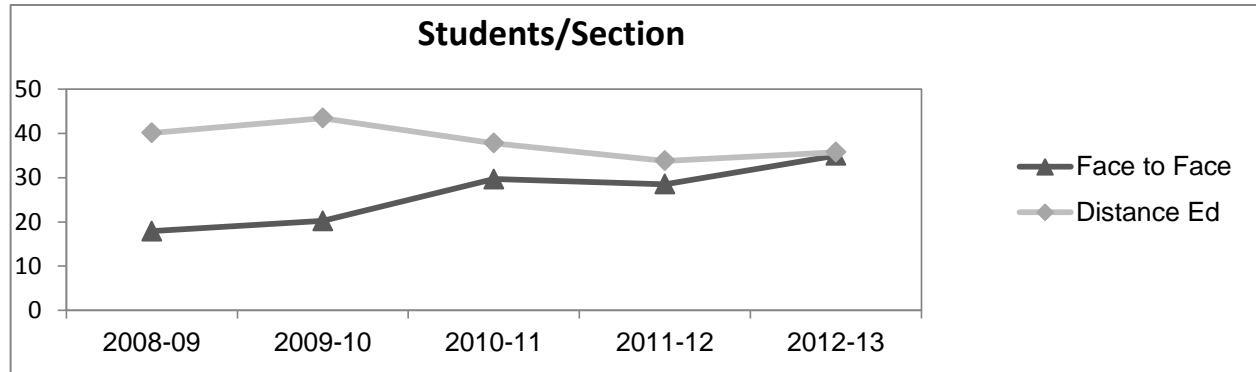
	2008-09		2009-10		2010-11		2011-12		2012-13		2012-13	
	#	%	#	%	#	%	#	%	Subject		Collegewide	
									#	%	#	%
Gender												
Female	569	72%	520	68%	452	66%	332	70%	283	71%	5,289	62%
Male	216	27%	246	32%	227	33%	141	30%	117	29%	3,283	38%
Unknown	3	0%	2	0%	4	1%	0	0%	1	0%	11	0%
Age												
19 & Younger	165	21%	232	30%	181	27%	107	23%	94	23%	1,298	15%
20-29	267	34%	281	37%	257	38%	168	36%	159	40%	3,929	46%
30-39	115	15%	104	14%	113	17%	97	21%	70	17%	1,671	19%
40 & Older	241	31%	151	20%	132	19%	101	21%	78	19%	1,685	20%
Ethnicity												
African American	38	5%	43	6%	54	8%	48	10%	33	8%	502	6%
American Indian	56	7%	68	9%	59	9%	30	6%	26	6%	177	2%
Asian/Filipino/Pac Islander	26	3%	19	2%	21	3%	14	3%	8	2%	416	5%
Hispanic/Latino	109	14%	129	17%	137	20%	125	26%	115	29%	2,554	30%
White	507	64%	471	61%	374	55%	227	48%	191	48%	4,480	52%
Two or more races	17	2%	21	3%	37	5%	29	6%	27	7%	413	5%
Unknown	35	4%	17	2%	1	0%	0	0%	1	0%	41	0%



Personal Development

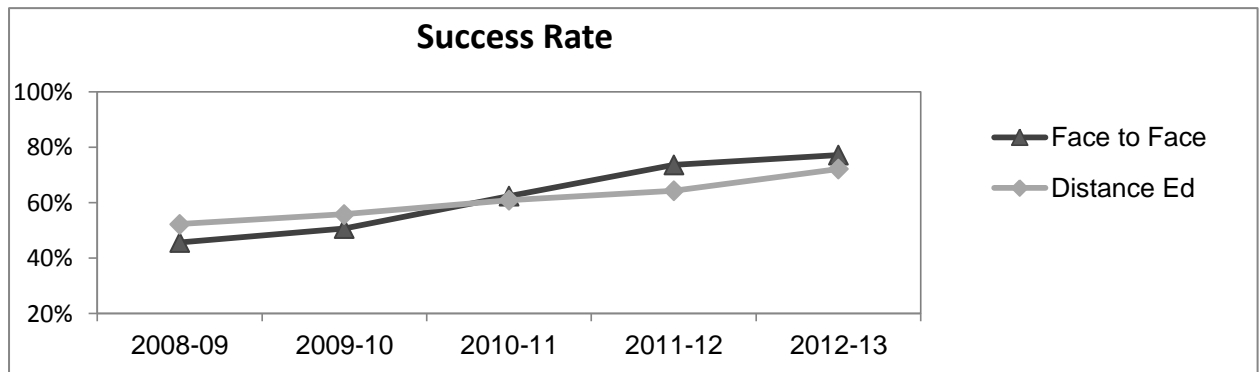
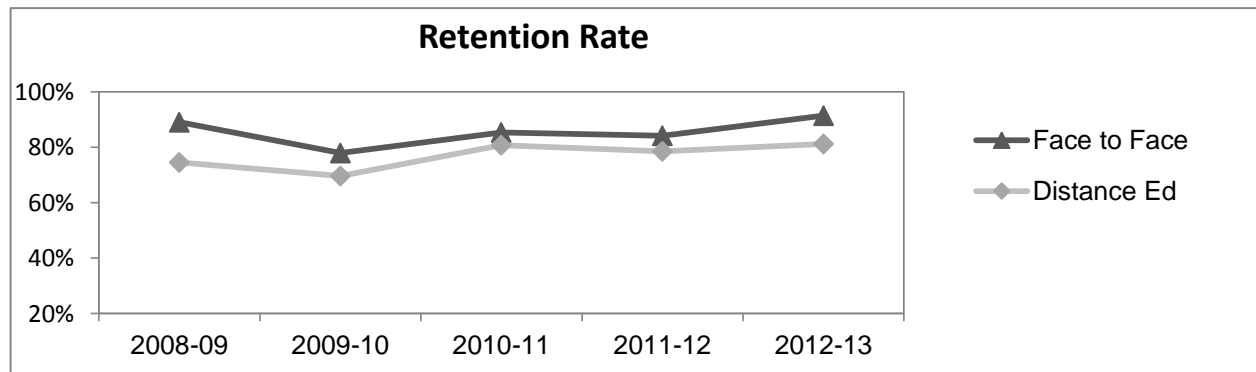
Course Enrollments - Productivity

	2008-09			2009-10			2010-11			2011-12			2012-13			2012-13		
	F-t-F ³	DE	Total	F-t-F ³	DE	Total	F-t-F ³	DE	Total	F-t-F ³	DE	Total	Subject			Collegewide		
	F-t-F ³	DE	Total	F-t-F ³	DE	Total	F-t-F ³	DE	Total	F-t-F ³	DE	Total	F-t-F ³	DE	Total	F-t-F ³	DE	Total
Number of Sections	32	10	42	15	14	29	6	16	22	2	14	16	1	11	12	511	519	1,030
Enrollment ⁴																		
Census	573	401	974	303	608	911	178	604	782	57	473	530	35	393	428	9,387	15,094	24,481
Students/Section ⁵	18	40	23	20	43	31	30	38	36	29	34	33	35	36	36	18	29	24
Productivity																		
FTES ⁶	48.5	31.1	79.6	26.5	43.9	70.3	18.2	45.5	63.7	5.9	23.5	29.4	3.6	19.1	22.8	1,368.1	1,573.3	2,941.4
FTEF ⁶	3.3	1.6	4.9	2.0	2.2	4.2	1.1	2.3	3.4	0.4	2.8	3.2	0.2	1.4	1.6	98.2	104.3	202.5
<i>Contract</i>			15%			33%			22%			0%			0%			38%
<i>Overload</i>			5%			1%			20%			10%			13%			12%
<i>Adjunct</i>			64%			43%			45%			69%			58%			36%
<i>Summer</i>			17%			23%			14%			21%			29%			14%
FTES/FTEF ⁷	14.6	19.4	16.2	13.2	20.0	16.8	16.1	20.1	18.7	14.8	8.4	9.2	18.1	13.7	14.3	13.9	15.1	14.5



Outcomes

	2008-09			2009-10			2010-11			2011-12			2012-13			2012-13		
	F-t-F ³	DE	Total	F-t-F ³	DE	Total	F-t-F ³	DE	Total	F-t-F ³	DE	Total	Subject			Collegewide		
	F-t-F ³	DE	Total	F-t-F ³	DE	Total	F-t-F ³	DE	Total	F-t-F ³	DE	Total	F-t-F ³	DE	Total	F-t-F ³	DE	Total
Retention Rate ⁸	89.0%	74.5%	82.1%	77.9%	69.6%	72.2%	85.4%	80.8%	81.8%	84.2%	78.6%	79.2%	91.4%	81.3%	82.1%	90.1%	78.5%	83.0%
Success Rate ⁸	45.7%	52.2%	48.8%	50.7%	55.8%	54.2%	62.4%	60.9%	61.2%	73.7%	64.3%	65.3%	77.1%	72.1%	72.6%	75.9%	61.0%	66.8%



Personal Development

Degrees - Certificates

	2008-09			2009-10			2010-11			2011-12			2012-13					
	AA	AS	CERT	AA	AS	CERT	AA	AS	CERT	AA	AS	CERT	Subject			Collegewide		
	AA	AS	CERT	AA	AS	CERT	AA	AS	CERT	AA	AS	CERT	AA	AS	CERT	AA	AS	CERT
* There are no awards associated with this Department or Subject																		
Total Awards by Type	0	0	0	0	0	0	0	0	0	0	0	0	0	0	0	193	61	121
% of total awards by type																51%	16%	32%
Total Awards	0			0			0			0			0			375		

Notes

¹ **Source:** ODS Reports (July, 2013)

² **Student Headcount, *Unduplicated*:** Number of students enrolled on census day, where each student is counted one time.

³ **F-t-F:** Face to Face instructional delivery mode.

⁴ **Enrollment:** Every course in which students are enrolled on census day.

⁵ **Students/Section:** Student enrollments per section on census day. Cross-listed sections are not combined.

⁶ Acronyms **FTES** and **FTEF** represent full-time equivalent students and full-time equivalent faculty, respectively.

⁷ **FTES/FTEF:** A measurement of productivity where the generally accepted target is 17.5.

⁸ **Success rate numerator:** Number of course enrollments with a successful passing grade (A,B,C,P/CR).

Retention rate numerator: Number of course enrollments retained through the semester (grade = A,B,C,P/CR,D,F,NP/NC,I).

Success and Retention rate denominator: Number of enrollments retained (A,B,C,P/CR,D,F,NP/NC,I), withdrawn (W), and dropped after Census Day (DR).