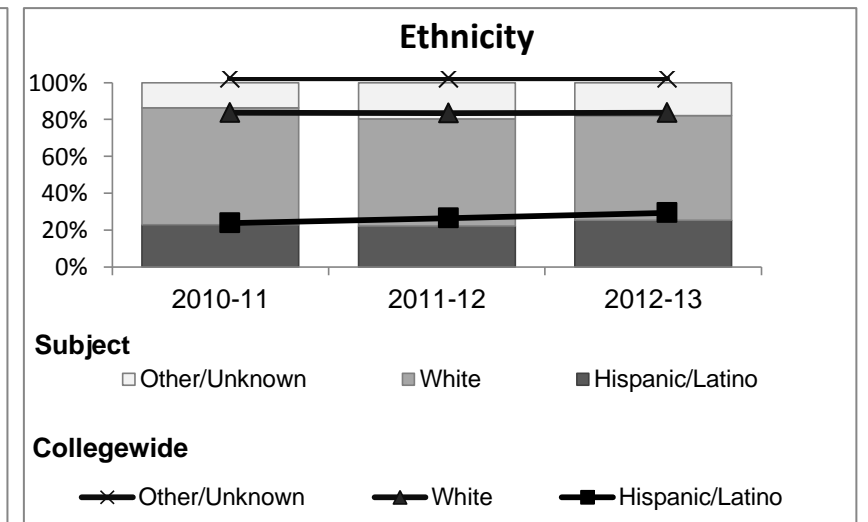
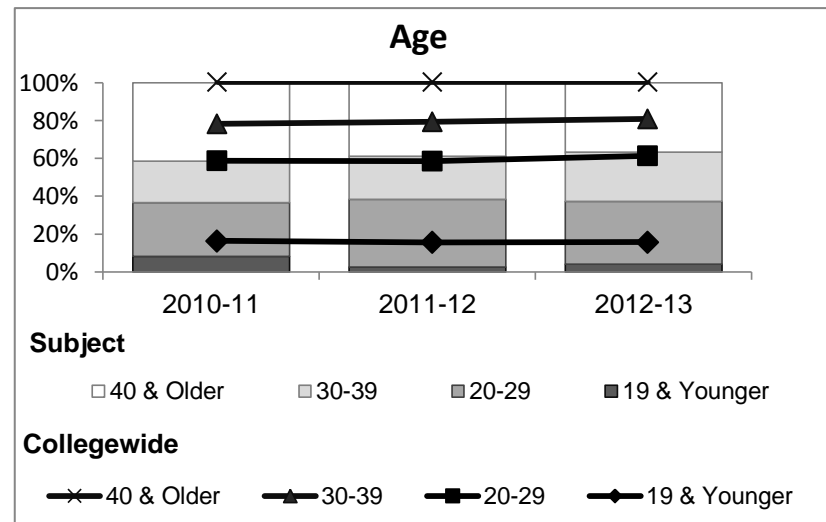
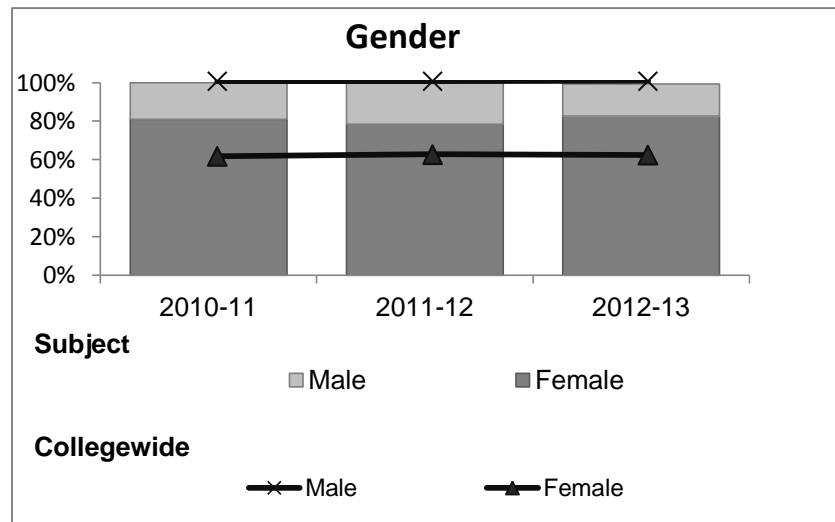


Paralegal Studies

Student Demographic Information

Student Headcount	2008-09		2009-10		2010-11		2011-12		2012-13		2012-13	
	#	% change - Prior Yr	#	% change - Prior Yr	#	% change - Prior Yr	#	% change - Prior Yr	Subject		Collegewide	
									#	% change - Prior Yr	#	% change - Prior Yr
Unduplicated ²	128	--	168	31%	183	9%	162	-11%	150	-7%	8,583	-16%

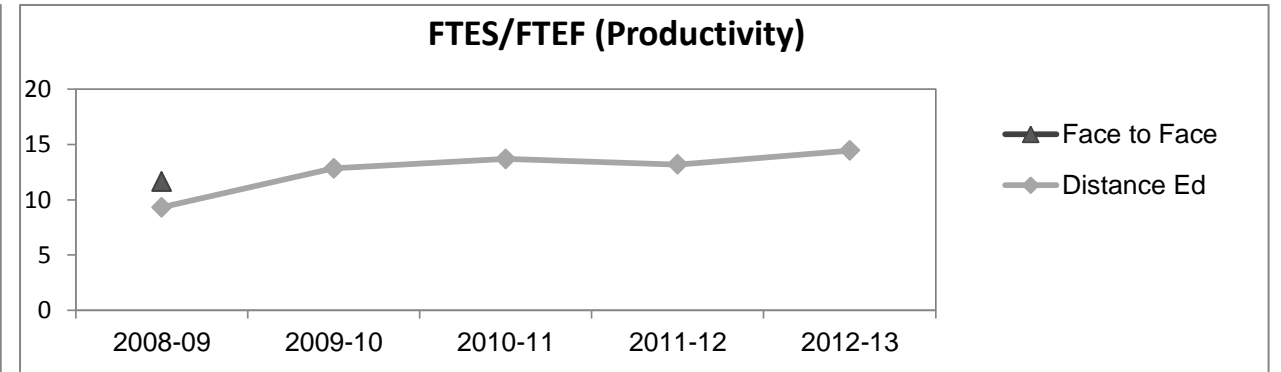
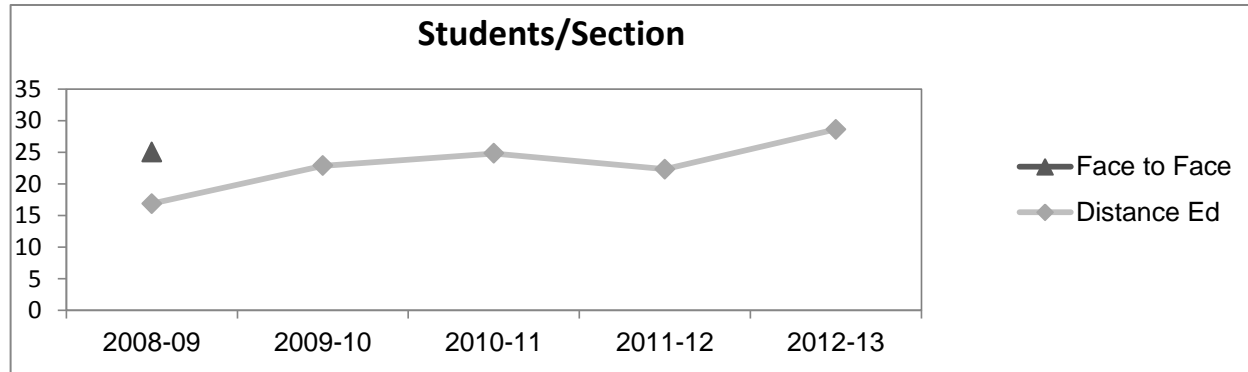
	2008-09		2009-10		2010-11		2011-12		2012-13		2012-13	
	#	%	#	%	#	%	#	%	Subject		Collegewide	
									#	%	#	%
Gender												
Female	104	81%	128	76%	148	81%	127	78%	124	83%	5,289	62%
Male	24	19%	40	24%	35	19%	35	22%	25	17%	3,283	38%
Unknown	0	0%	0	0%	0	0%	0	0%	1	1%	11	0%
Age												
19 & Younger	9	7%	15	9%	15	8%	4	2%	6	4%	1,298	15%
20-29	36	28%	52	31%	52	28%	58	36%	50	33%	3,929	46%
30-39	33	26%	36	21%	40	22%	37	23%	39	26%	1,671	19%
40 & Older	50	39%	65	39%	76	42%	63	39%	55	37%	1,685	20%
Ethnicity												
African American	9	7%	17	10%	13	7%	19	12%	13	9%	502	6%
American Indian	5	4%	5	3%	4	2%	1	1%	1	1%	177	2%
Asian/Filipino/Pac Islander	4	3%	4	2%	3	2%	3	2%	5	3%	416	5%
Hispanic/Latino	21	16%	34	20%	42	23%	36	22%	38	25%	2,554	30%
White	80	63%	102	61%	116	63%	94	58%	85	57%	4,480	52%
Two or more races	3	2%	4	2%	5	3%	9	6%	8	5%	413	5%
Unknown	6	5%	2	1%	0	0%	0	0%	0	0%	41	0%



Paralegal Studies

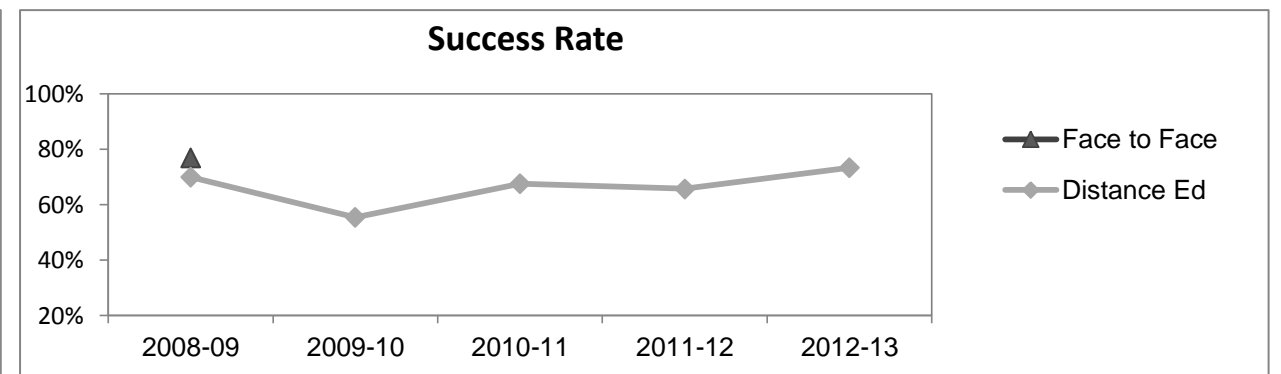
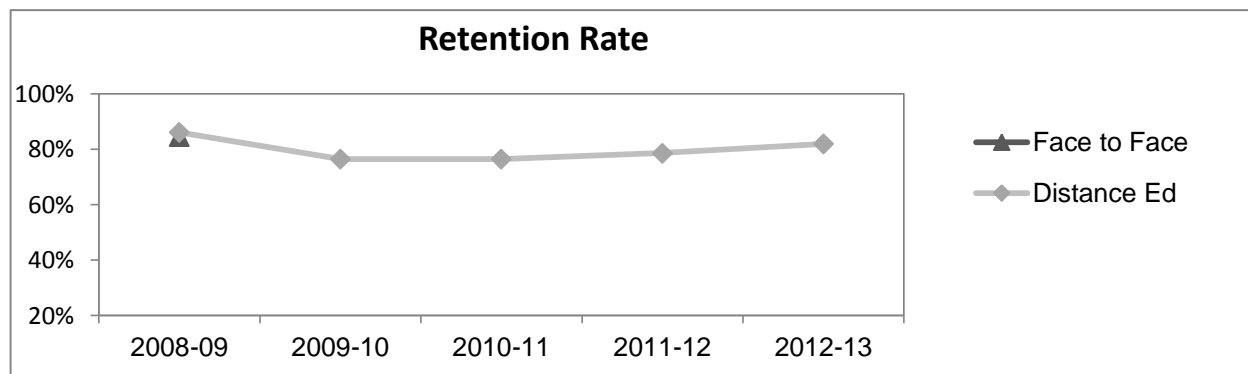
Course Enrollments - Productivity

	2008-09			2009-10			2010-11			2011-12			2012-13			2012-13		
	F-t-F ³	DE	Total	F-t-F ³	DE	Total	F-t-F ³	DE	Total	F-t-F ³	DE	Total	Subject			Collegewide		
	F-t-F ³	DE	Total	F-t-F ³	DE	Total	F-t-F ³	DE	Total	F-t-F ³	DE	Total	F-t-F ³	DE	Total	F-t-F ³	DE	Total
Number of Sections	1	17	18	0	15	15	0	17	17	0	15	15	0	13	13	511	519	1,030
Enrollment ⁴																		
Census	25	287	312	0	343	343	0	422	422	0	335	335	0	372	372	9,387	15,094	24,481
Students/Section ⁵	25	17	17		23	23		25	25		22	22		29	29	18	29	24
Productivity																		
FTES ⁶	2.3	26.1	28.4	0	31.6	31.6	0	38.3	38.3	0	31.6	31.6	0	34.6	34.6	1,368.1	1,573.3	2,941.4
FTEF ⁶	0.2	2.8	3.0	0	2.5	2.5	0	2.8	2.8	0	2.4	2.4	0	2.4	2.4	98.2	104.3	202.5
<i>Contract</i>			0%			0%			0%			0%			0%			38%
<i>Overload</i>			0%			0%			0%			0%			0%			12%
<i>Adjunct</i>			89%			92%			88%			92%			83%			36%
<i>Summer</i>			11%			8%			12%			8%			17%			14%
FTES/FTEF ⁷	11.6	9.3	9.5		12.8	12.8		13.7	13.7		13.2	13.2		14.4	14.4	13.9	15.1	14.5



Outcomes

	2008-09			2009-10			2010-11			2011-12			2012-13			2012-13		
	F-t-F ³	DE	Total	F-t-F ³	DE	Total	F-t-F ³	DE	Total	F-t-F ³	DE	Total	Subject			Collegewide		
	F-t-F ³	DE	Total	F-t-F ³	DE	Total	F-t-F ³	DE	Total	F-t-F ³	DE	Total	F-t-F ³	DE	Total	F-t-F ³	DE	Total
Retention Rate ⁸	84.6%	86.0%	85.9%		76.4%	76.4%		76.4%	76.4%		78.6%	78.6%		82.0%	82.0%	90.1%	78.5%	83.0%
Success Rate ⁸	76.9%	69.9%	70.5%		55.4%	55.4%		67.5%	67.5%		65.7%	65.7%		73.4%	73.4%	75.9%	61.0%	66.8%



Paralegal Studies

Degrees - Certificates

	2008-09			2009-10			2010-11			2011-12			2012-13			Collegewide		
	AA	AS	CERT	AA	AS	CERT	AA	AS	CERT	AA	AS	CERT	AA	AS	CERT	AA	AS	CERT
Awards related to or contributed to by CIS & Business & Digital Arts																		
Business	7	1	0	0	2	2	5	6	3	0	7	1	0	4	3			
Business Administration	2	9	3	13	7	1	19	7	1	23	3	0	24	1	0			
Business Management	0	10	3	0	10	2	0	14	1	0	4	2	0	2	0			
Business Office Technology	0	0	0	0	3	0	0	6	1	0	2	0	0	1	5			
Computer Information Systems	0	3	3	0	3	0	0	7	1	0	5	3	0	9	1			
Computer Science	0	0	0	0	0	0	0	0	0	0	0	0	0	1	0			
Digital Animation	0	6	0	0	2	0	0	0	0	0	0	1	0	0	0			
Management	0	0	0	0	0	0	0	0	0	0	1	0	0	1	0			
Office Assistant	0	0	0	0	0	0	0	0	0	0	0	0	0	0	6			
Office Assistant I	0	0	0	0	0	0	0	0	1	0	0	1	0	0	0			
Office Clerk	0	0	0	0	0	0	0	0	0	0	0	0	0	0	6			
Paralegal Studies	0	2	3	0	1	3	0	2	2	0	0	5	0	4	6			
Small Business Mgmt/Entreprene	0	1	0	0	2	0	0	1	1	0	0	0	0	0	0			
Web Design	0	7	2	0	4	1	0	1	1	0	2	3	0	2	3			
Digital Animation	0	6	0	0	2	0	0	0	0	0	0	1	0	0	0			
Digital Media	2	0	0	3	0	0	7	3	0	0	3	0	0	3	0			
Total Awards by Type	11	45	14	16	36	9	31	47	12	23	27	17	24	28	30	193	61	121
% of total awards by type	16%	64%	20%	26%	59%	15%	34%	52%	13%	34%	40%	25%	29%	34%	37%	51%	16%	32%
Total Awards	70			61			90			67			82			375		
Liberal Arts/Math & Science	3	0	0	14	0	0	21	0	0	23	0	0	44	0	0			
Engineering	2	0	0	3	0	0	7	3	0	0	3	0	0	3	0			
Mathematics	0	0	0	0	0	0	0	0	0	2	0	0	0	3	0			
Human Services	0	0	0	0	6	0	0	5	0	0	8	0	0	6	0			
Human Services Worker	0	0	0	0	0	1	0	0	3	0	0	8	0	0	9			

Notes

- ¹ **Source:** ODS Reports (July, 2013)
- ² **Student Headcount, *Unduplicated*:** Number of students enrolled on census day, where each student is counted one time.
- ³ **F-t-F:** Face to Face instructional delivery mode.
- ⁴ **Enrollment:** Every course in which students are enrolled on census day.
- ⁵ **Students/Section:** Student enrollments per section on census day. Cross-listed sections are not combined.
- ⁶ Acronyms **FTES** and **FTEF** represent full-time equivalent students and full-time equivalent faculty, respectively.
- ⁷ **FTES/FTEF:** A measurement of productivity where the generally accepted target is 17.5.
- ⁸ **Success rate numerator:** Number of course enrollments with a successful passing grade (A,B,C,P/CR).
- Retention rate numerator:** Number of course enrollments retained through the semester (grade = A,B,C,P/CR,D,F,NP/NC,I).
- Success and Retention rate denominator:** Number of enrollments retained (A,B,C,P/CR,D,F,NP/NC,I), withdrawn (W), and dropped after Census Day (DR).