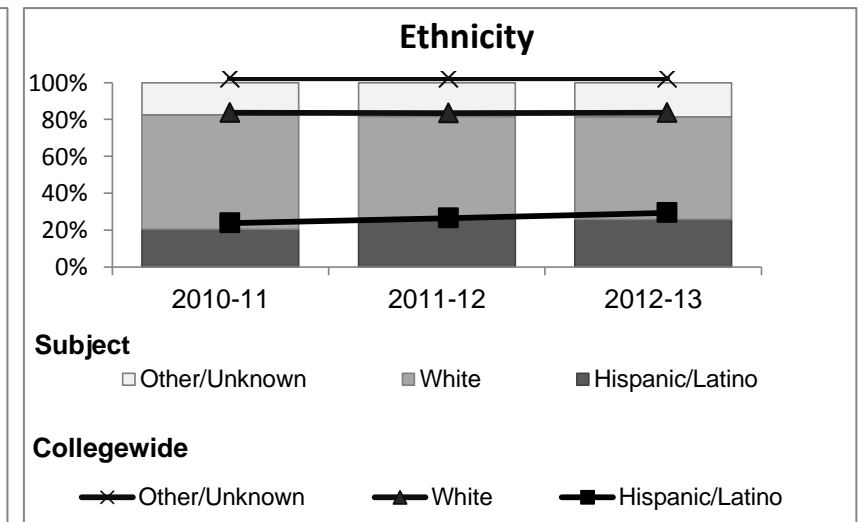
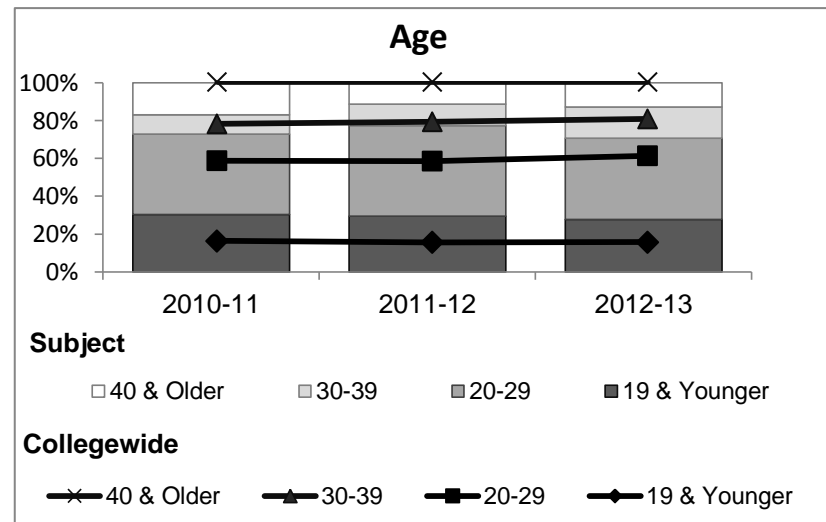
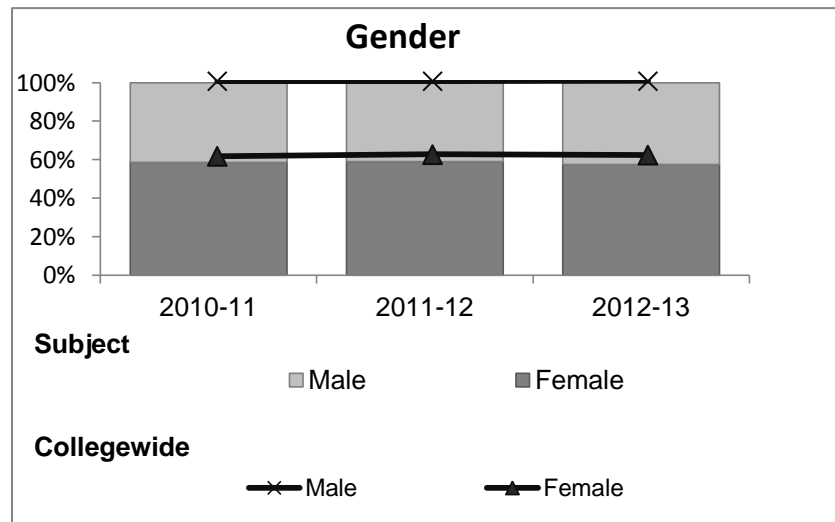


Music

Student Demographic Information

Student Headcount	2008-09		2009-10		2010-11		2011-12		2012-13		2012-13	
	#	% change - Prior Yr	#	% change - Prior Yr	#	% change - Prior Yr	#	% change - Prior Yr	Subject		Collegewide	
									#	% change - Prior Yr	#	% change - Prior Yr
Unduplicated ²	832	--	811	-3%	632	-22%	611	-3%	552	-10%	8,583	-16%

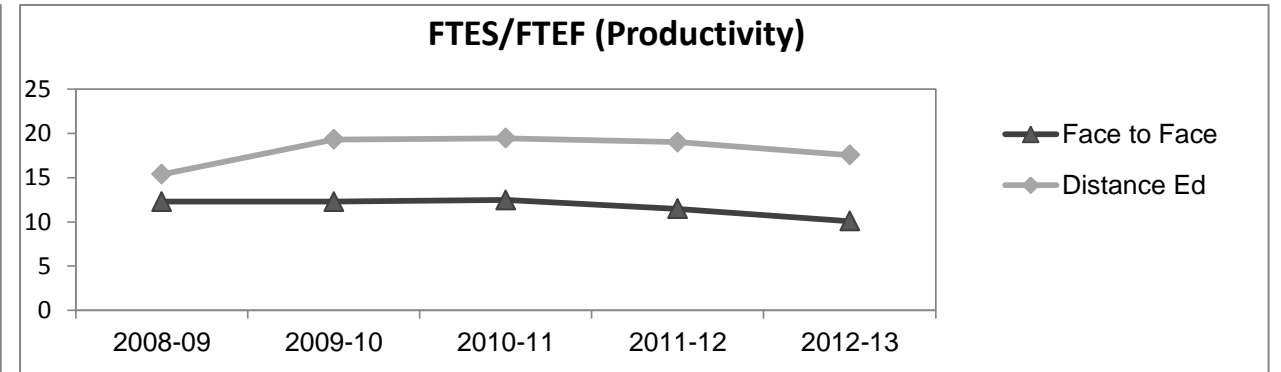
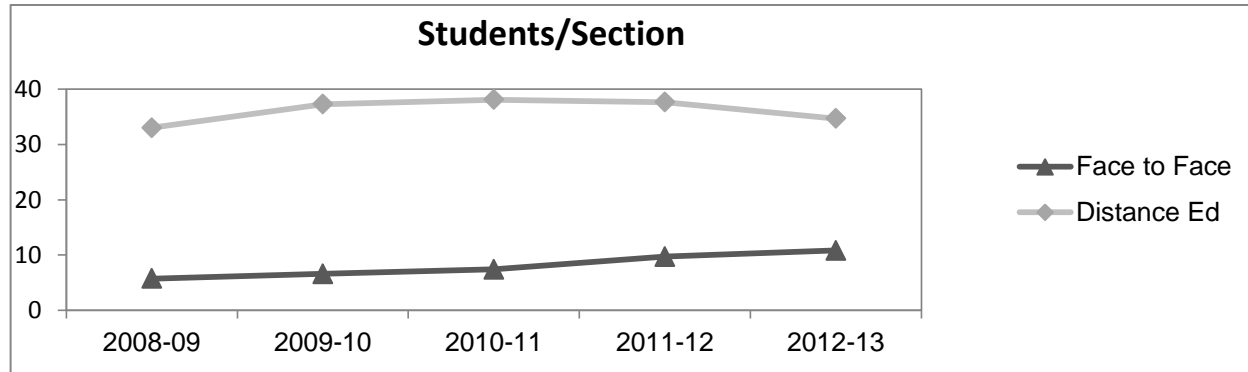
	2008-09		2009-10		2010-11		2011-12		2012-13		2012-13	
	#	%	#	%	#	%	#	%	Subject		Collegewide	
									#	%	#	%
Gender												
Female	486	58%	433	53%	370	59%	361	59%	317	57%	5,289	62%
Male	344	41%	375	46%	261	41%	249	41%	235	43%	3,283	38%
Unknown	2	0%	3	0%	1	0%	1	0%	0	0%	11	0%
Age												
19 & Younger	232	28%	246	30%	191	30%	180	29%	153	28%	1,298	15%
20-29	260	31%	259	32%	269	43%	292	48%	237	43%	3,929	46%
30-39	82	10%	80	10%	65	10%	70	11%	91	16%	1,671	19%
40 & Older	258	31%	226	28%	107	17%	69	11%	71	13%	1,685	20%
Ethnicity												
African American	32	4%	27	3%	45	7%	37	6%	34	6%	502	6%
American Indian	14	2%	11	1%	12	2%	6	1%	14	3%	177	2%
Asian/Filipino/Pac Islander	34	4%	39	5%	19	3%	27	4%	21	4%	416	5%
Hispanic/Latino	108	13%	138	17%	129	20%	161	26%	143	26%	2,554	30%
White	595	72%	547	67%	393	62%	338	55%	307	56%	4,480	52%
Two or more races	22	3%	29	4%	33	5%	40	7%	32	6%	413	5%
Unknown	27	3%	20	2%	1	0%	2	0%	1	0%	41	0%



Music

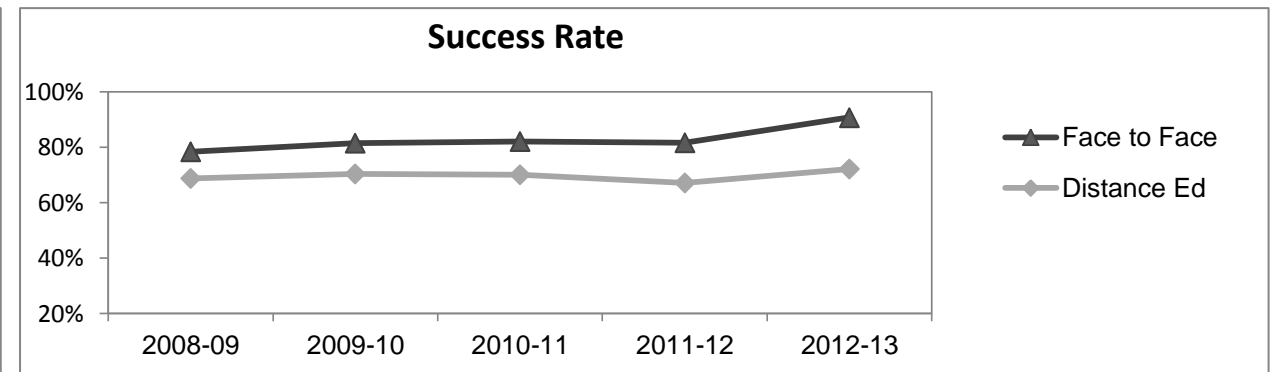
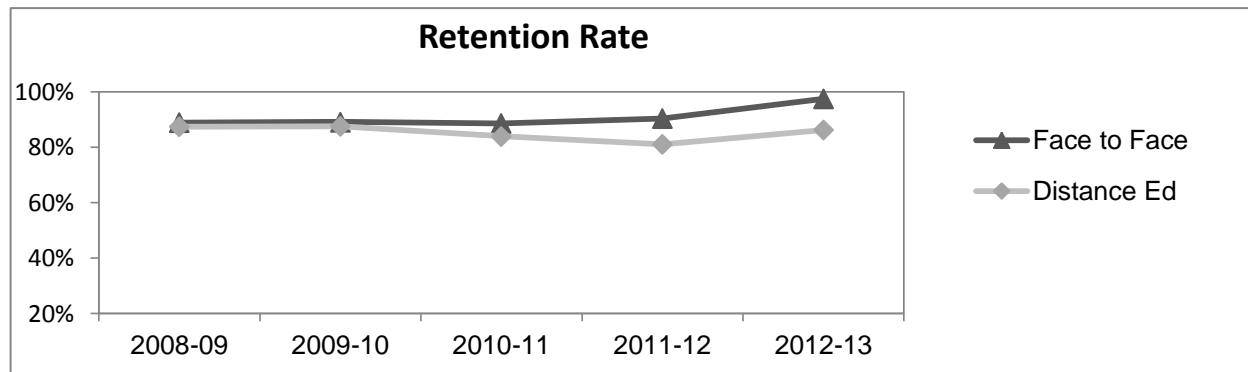
Course Enrollments - Productivity

	2008-09			2009-10			2010-11			2011-12			2012-13			2012-13		
	F-t-F ³	DE	Total	F-t-F ³	DE	Total	F-t-F ³	DE	Total	F-t-F ³	DE	Total	Subject			Collegewide		
	F-t-F ³	DE	Total	F-t-F ³	DE	Total	F-t-F ³	DE	Total	F-t-F ³	DE	Total	F-t-F ³	DE	Total	F-t-F ³	DE	Total
Number of Sections	119	9	128	72	11	83	27	13	40	14	14	28	11	14	25	511	519	1,030
Enrollment ⁴																		
Census	685	297	982	477	410	887	200	495	695	136	527	663	119	485	604	9,387	15,094	24,481
Students/Section ⁵	6	33	8	7	37	11	7	38	17	10	38	24	11	35	24	18	29	24
Productivity																		
FTES ⁶	68.8	27.7	96.5	56.4	38.6	95.0	22.4	46.7	69.1	14.5	49.4	64.0	13.5	45.6	59.1	1,368.1	1,573.3	2,941.4
FTEF ⁶	5.6	1.8	7.4	4.6	2.0	6.6	1.8	2.4	4.2	1.3	2.6	3.9	1.3	2.6	3.9	98.2	104.3	202.5
<i>Contract</i>			22%			30%			49%			52%			51%			38%
<i>Overload</i>			0%			3%			0%			2%			2%			12%
<i>Adjunct</i>			64%			43%			46%			36%			37%			36%
<i>Summer</i>			14%			23%			5%			10%			10%			14%
FTES/FTEF ⁷	12.3	15.4	13.0	12.3	19.3	14.4	12.5	19.4	16.5	11.5	19.0	16.5	10.1	17.5	15.0	13.9	15.1	14.5



Outcomes

	2008-09			2009-10			2010-11			2011-12			2012-13			2012-13		
	F-t-F ³	DE	Total	F-t-F ³	DE	Total	F-t-F ³	DE	Total	F-t-F ³	DE	Total	Subject			Collegewide		
	F-t-F ³	DE	Total	F-t-F ³	DE	Total	F-t-F ³	DE	Total	F-t-F ³	DE	Total	F-t-F ³	DE	Total	F-t-F ³	DE	Total
Retention Rate ⁸	88.9%	87.4%	88.4%	89.1%	87.6%	88.5%	88.6%	83.9%	85.3%	90.4%	81.0%	82.9%	97.5%	86.2%	88.4%	90.1%	78.5%	83.0%
Success Rate ⁸	78.4%	68.7%	75.5%	81.5%	70.3%	76.7%	82.1%	70.1%	73.5%	81.6%	67.1%	70.1%	90.8%	72.2%	75.8%	75.9%	61.0%	66.8%



Music

Degrees - Certificates

													2012-13					
	2008-09			2009-10			2010-11			2011-12			Subject			Collegewide		
	AA	AS	CERT	AA	AS	CERT	AA	AS	CERT	AA	AS	CERT	AA	AS	CERT	AA	AS	CERT
Awards related to or contributed to by Visual & Performing Arts																		
Art	0	0	0	2	0	0	3	0	0	0	0	0	0	0	0			
Theatre Arts	0	0	0	0	0	0	1	0	0	0	0	0	0	0	0			
Fine Arts	0	0	0	1	0	0	4	0	0	2	0	0	0	0	0			
Total Awards by Type	0	0	0	3	0	0	8	0	0	2	0	0	0	0	0	193	61	121
% of total awards by type				100%	0%	0%	100%	0%	0%	100%	0%	0%				51%	16%	32%
Total Awards	0			3			8			2			0			375		
Liberal Arts/Arts & Humanities	3	0	0	13	0	0	33	0	0	37	0	0	42	0	0			
Web Design	0	7	2	0	4	1	0	1	1	0	2	3	0	2	3			
Digital Animation	0	6	0	0	2	0	0	0	0	0	0	1	0	0	0			
Digital Media	0	0	0	0	0	0	0	0	0	0	0	0	0	0	3			

Notes¹ **Source:** ODS Reports (July, 2013)² **Student Headcount, *Unduplicated*:** Number of students enrolled on census day, where each student is counted one time.³ **F-t-F:** Face to Face instructional delivery mode.⁴ **Enrollment:** Every course in which students are enrolled on census day.⁵ **Students/Section:** Student enrollments per section on census day. Cross-listed sections are not combined.⁶ Acronyms **FTES** and **FTEF** represent full-time equivalent students and full-time equivalent faculty, respectively.⁷ **FTES/FTEF:** A measurement of productivity where the generally accepted target is 17.5.⁸ **Success rate numerator:** Number of course enrollments with a successful passing grade (A,B,C,P/CR).**Retention rate numerator:** Number of course enrollments retained through the semester (grade = A,B,C,P/CR,D,F,NP/NC,I).**Success and Retention rate denominator:** Number of enrollments retained (A,B,C,P/CR,D,F,NP/NC,I), withdrawn (W), and dropped after Census Day (DR).