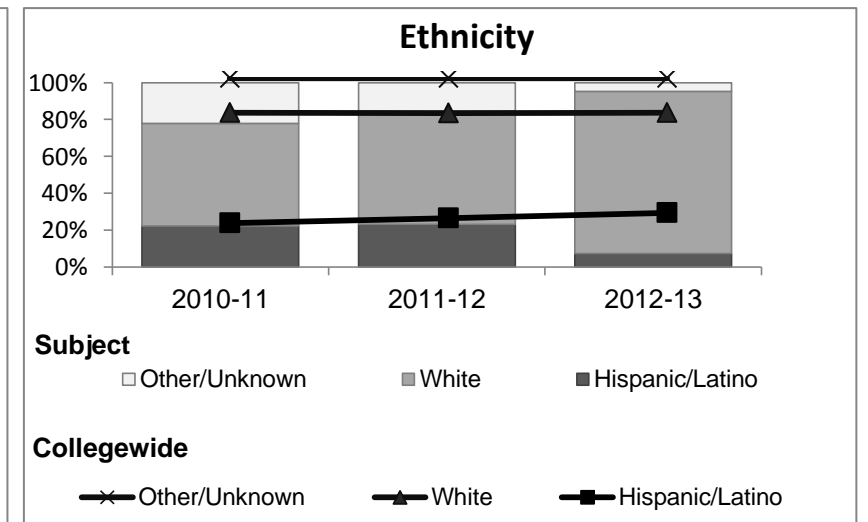
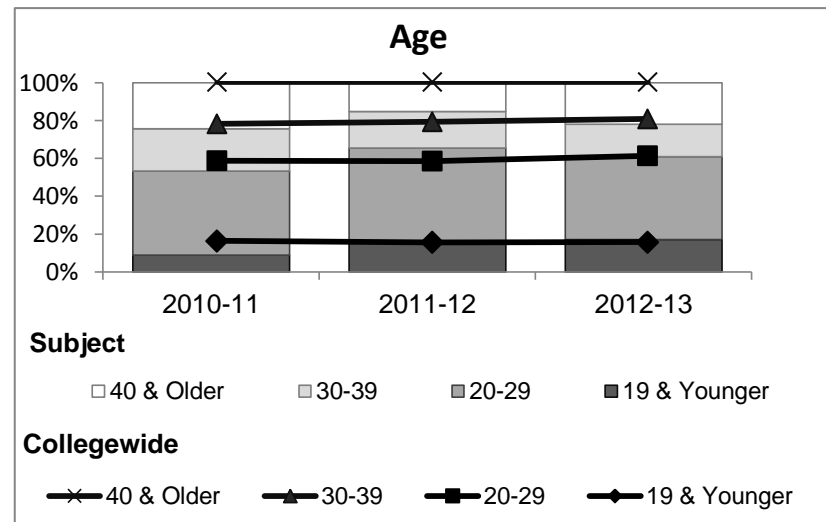
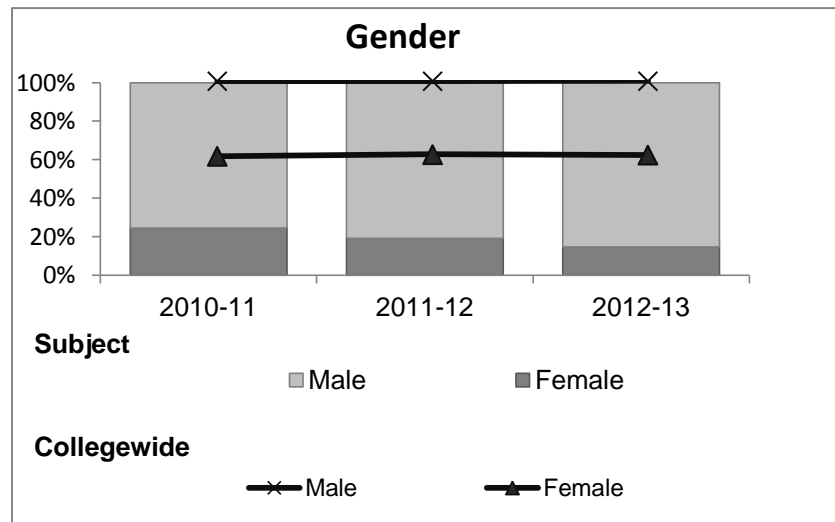


Machine Tool Technology

Student Demographic Information

Student Headcount	2008-09		2009-10		2010-11		2011-12		2012-13		2012-13	
	#	% change - Prior Yr	#	% change - Prior Yr	#	% change - Prior Yr	#	% change - Prior Yr	Subject		Collegewide	
									#	% change - Prior Yr	#	% change - Prior Yr
Unduplicated ²	33	--	70	112%	45	-36%	26	-42%	41	58%	8,583	-16%

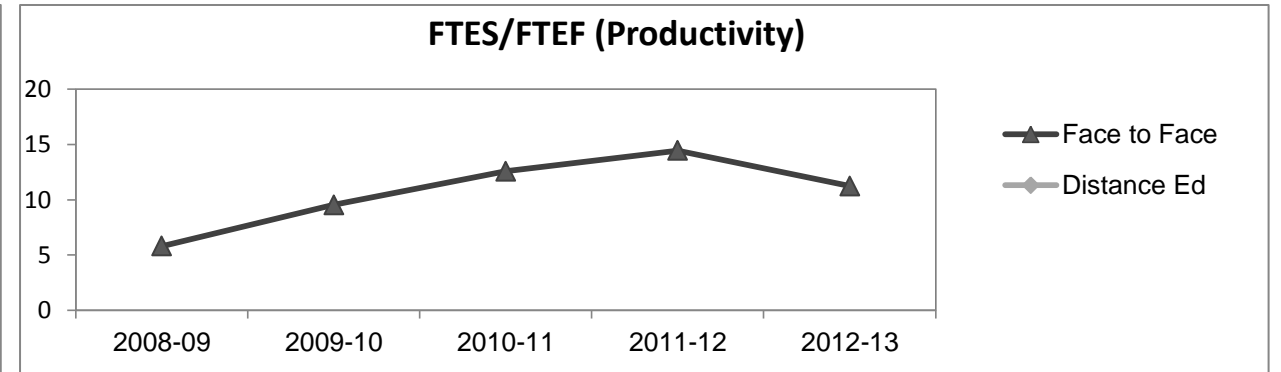
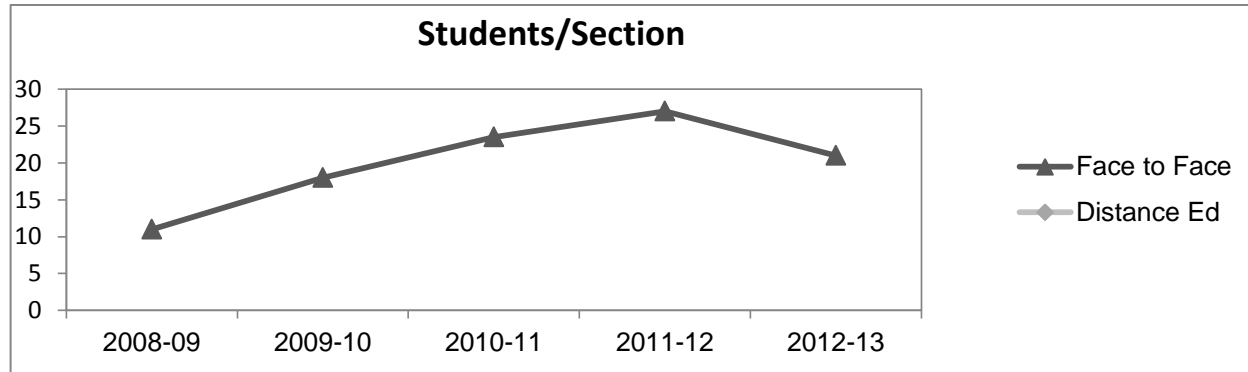
	2008-09		2009-10		2010-11		2011-12		2012-13		2012-13	
	#	%	#	%	#	%	#	%	Subject		Collegewide	
									#	%	#	%
Gender												
Female	9	27%	9	13%	11	24%	5	19%	6	15%	5,289	62%
Male	23	70%	61	87%	34	76%	21	81%	35	85%	3,283	38%
Unknown	1	3%	0	0%	0	0%	0	0%	0	0%	11	0%
Age												
19 & Younger	7	21%	9	13%	4	9%	4	15%	7	17%	1,298	15%
20-29	18	55%	26	37%	20	44%	13	50%	18	44%	3,929	46%
30-39	3	9%	14	20%	10	22%	5	19%	7	17%	1,671	19%
40 & Older	5	15%	21	30%	11	24%	4	15%	9	22%	1,685	20%
Ethnicity												
African American	2	6%	2	3%	2	4%	2	8%	0	0%	502	6%
American Indian	0	0%	2	3%	5	11%	0	0%	0	0%	177	2%
Asian/Filipino/Pac Islander	1	3%	0	0%	0	0%	1	4%	1	2%	416	5%
Hispanic/Latino	3	9%	8	11%	10	22%	6	23%	3	7%	2,554	30%
White	26	79%	53	76%	25	56%	16	62%	36	88%	4,480	52%
Two or more races	1	3%	2	3%	3	7%	1	4%	1	2%	413	5%
Unknown	0	0%	3	4%	0	0%	0	0%	0	0%	41	0%



Machine Tool Technology

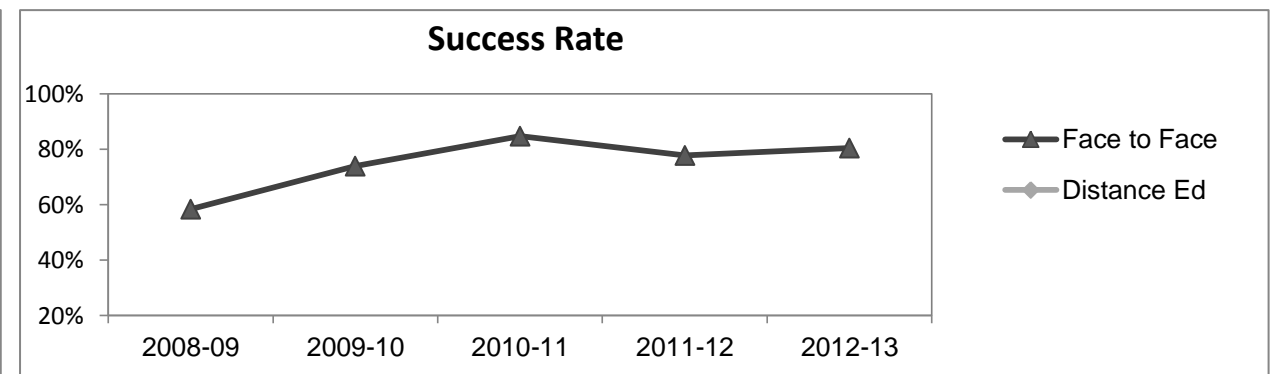
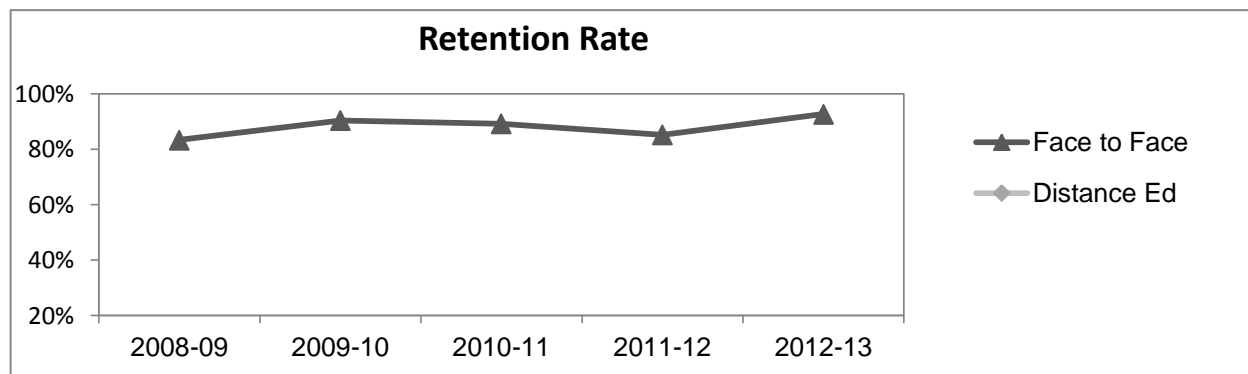
Course Enrollments - Productivity

	2008-09			2009-10			2010-11			2011-12			2012-13			2012-13		
	F-t-F ³	DE	Total	F-t-F ³	DE	Total	F-t-F ³	DE	Total	F-t-F ³	DE	Total	Subject			Collegewide		
	F-t-F ³	DE	Total	F-t-F ³	DE	Total	F-t-F ³	DE	Total	F-t-F ³	DE	Total	F-t-F ³	DE	Total	F-t-F ³	DE	Total
Number of Sections	3	0	3	4	0	4	2	0	2	1	0	1	2	0	2	511	519	1,030
Enrollment ⁴																		
Census	33	0	33	72	0	72	47	0	47	27	0	27	42	0	42	9,387	15,094	24,481
Students/Section ⁵	11		11	18		18	24		24	27		27	21		21	18	29	24
Productivity																		
FTES ⁶	5.0	0	5.0	11.4	0	11.4	6.7	0	6.7	3.9	0	3.9	6.0	0	6.0	1,368.1	1,573.3	2,941.4
FTEF ⁶	0.9	0	0.9	1.2	0	1.2	0.5	0	0.5	0.3	0	0.3	0.5	0	0.5	98.2	104.3	202.5
<i>Contract</i>			39%			45%			63%			100%			50%			38%
<i>Overload</i>			23%			0%			37%			0%			50%			12%
<i>Adjunct</i>			38%			56%			0%			0%			0%			36%
<i>Summer</i>			0%			0%			0%			0%			0%			14%
FTES/FTEF ⁷	5.8		5.8	9.5		9.5	12.6		12.6	14.4		14.4	11.2		11.2	13.9	15.1	14.5



Outcomes

	2008-09			2009-10			2010-11			2011-12			2012-13			2012-13		
	F-t-F ³	DE	Total	F-t-F ³	DE	Total	F-t-F ³	DE	Total	F-t-F ³	DE	Total	Subject			Collegewide		
	F-t-F ³	DE	Total	F-t-F ³	DE	Total	F-t-F ³	DE	Total	F-t-F ³	DE	Total	F-t-F ³	DE	Total	F-t-F ³	DE	Total
Retention Rate ⁸	83.3%		83.3%	90.4%		90.4%	89.1%		89.1%	85.2%		85.2%	92.7%		92.7%	90.1%	78.5%	83.0%
Success Rate ⁸	58.3%		58.3%	74.0%		74.0%	84.8%		84.8%	77.8%		77.8%	80.5%		80.5%	75.9%	61.0%	66.8%



Machine Tool Technology

Degrees - Certificates

	2012-13																	
	2008-09			2009-10			2010-11			2011-12			Subject			Collegewide		
	AA	AS	CERT	AA	AS	CERT	AA	AS	CERT	AA	AS	CERT	AA	AS	CERT	AA	AS	CERT
Awards related to or contributed to by Industrial Arts																		
Automotive Technology	0	0	0	0	1	0	0	0	0	0	0	0	0	0	0			
Indstrl Tech: Engineering Tech	0	0	0	0	0	0	0	1	0	0	0	0	0	0	0			
Indstrl Tech: Solar Technician	0	0	0	0	0	0	0	0	1	0	0	7	0	2	0			
Indstrl Tech: Wind Technician	0	0	0	0	0	0	0	0	0	0	0	2	0	0	0			
Industrial Technology	0	0	0	0	0	0	0	0	0	0	1	1	0	0	0			
Trades Practices	1	0	0	2	0	0	1	0	0	1	0	0	0	0	0			
Welding	0	0	0	0	1	0	0	0	0	0	0	0	0	0	0			
Welding Processes	0	0	0	0	0	0	0	0	0	0	0	5	0	0	19			
Welding Technology	0	0	2	0	0	4	0	1	3	0	4	11	0	7	15			
Total Awards by Type	1	0	2	2	2	4	1	2	4	1	5	26	0	9	34	193	61	121
% of total awards by type	33%	0%	67%	25%	25%	50%	14%	29%	57%	3%	16%	81%	0%	21%	79%	51%	16%	32%
Total Awards	3			8			7			32			43			375		

Notes¹ **Source:** ODS Reports (July, 2013)² **Student Headcount, *Unduplicated*:** Number of students enrolled on census day, where each student is counted one time.³ **F-t-F:** Face to Face instructional delivery mode.⁴ **Enrollment:** Every course in which students are enrolled on census day.⁵ **Students/Section:** Student enrollments per section on census day. Cross-listed sections are not combined.⁶ Acronyms **FTES** and **FTEF** represent full-time equivalent students and full-time equivalent faculty, respectively.⁷ **FTES/FTEF:** A measurement of productivity where the generally accepted target is 17.5.⁸ **Success rate numerator:** Number of course enrollments with a successful passing grade (A,B,C,P/CR).**Retention rate numerator:** Number of course enrollments retained through the semester (grade = A,B,C,P/CR,D,F,NP/NC,I).**Success and Retention rate denominator:** Number of enrollments retained (A,B,C,P/CR,D,F,NP/NC,I), withdrawn (W), and dropped after Census Day (DR).