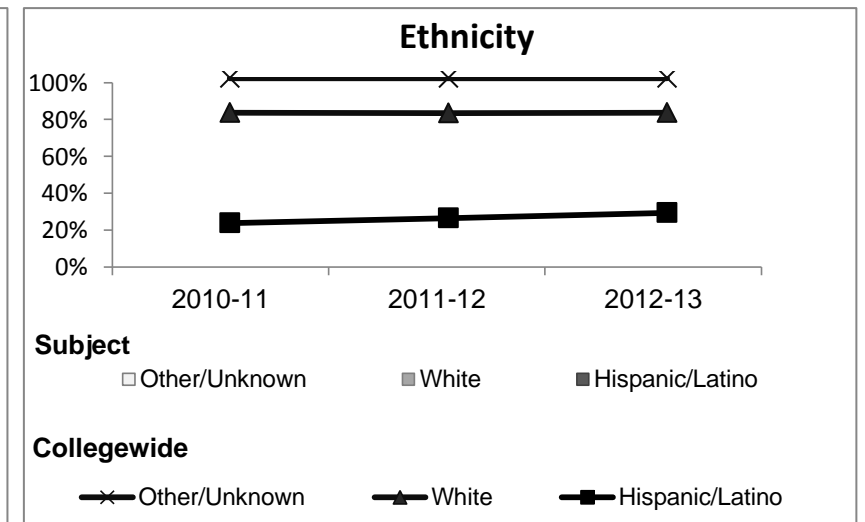
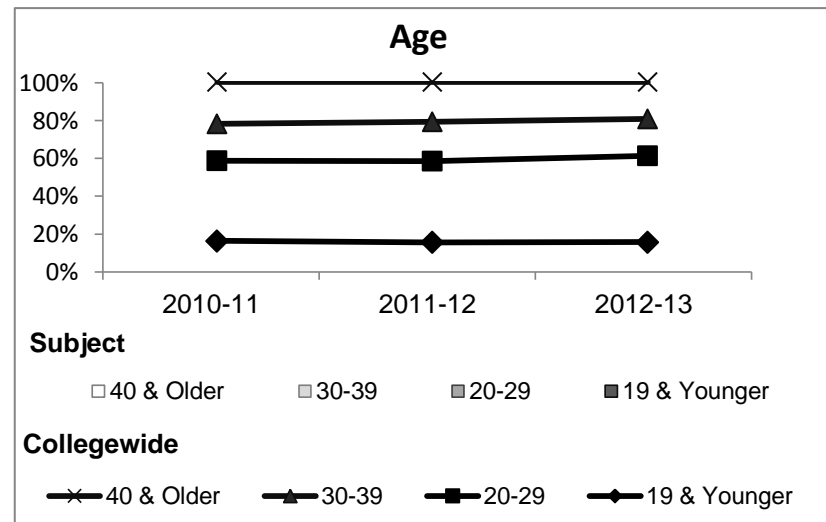


Media Arts

Student Demographic Information

Student Headcount	2008-09		2009-10		2010-11		2011-12		2012-13		2012-13	
	#	% change - Prior Yr	#	% change - Prior Yr	#	% change - Prior Yr	#	% change - Prior Yr	Subject		Collegewide	
									#	% change - Prior Yr	#	% change - Prior Yr
Unduplicated ²	7	--		-		-		-		-	8,583	-16%

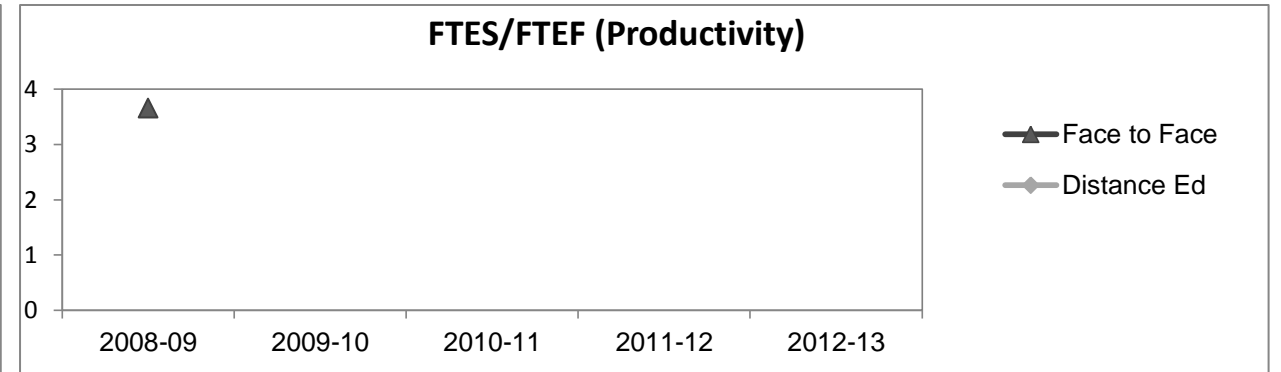
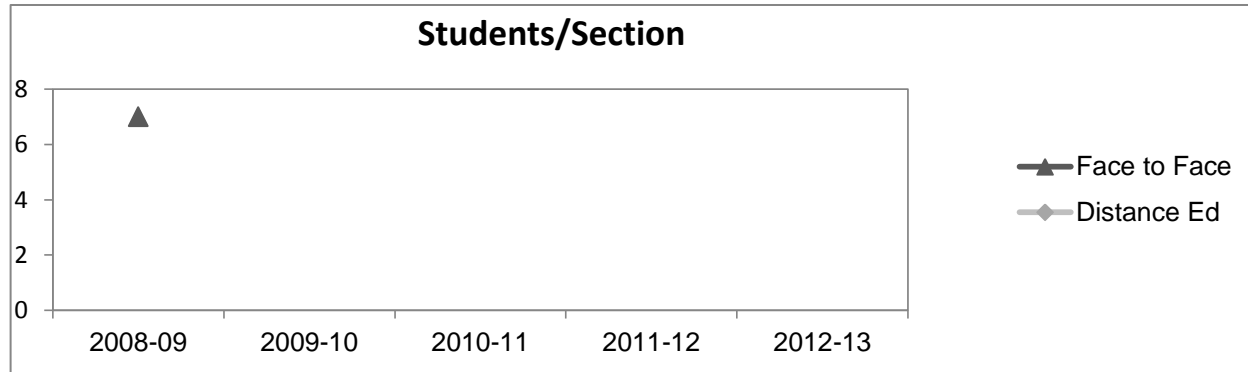
	2008-09		2009-10		2010-11		2011-12		2012-13		2012-13	
	#	%	#	%	#	%	#	%	Subject		Collegewide	
									#	%	#	%
Gender												
Female	6	86%									5,289	62%
Male	1	14%									3,283	38%
Unknown	0	0%									11	0%
Age												
19 & Younger	0	0%									1,298	15%
20-29	2	29%									3,929	46%
30-39	1	14%									1,671	19%
40 & Older	4	57%									1,685	20%
Ethnicity												
African American	0	0%									502	6%
American Indian	0	0%									177	2%
Asian/Filipino/Pac Islander	0	0%									416	5%
Hispanic/Latino	0	0%									2,554	30%
White	7	100%									4,480	52%
Two or more races	0	0%									413	5%
Unknown	0	0%									41	0%



Media Arts

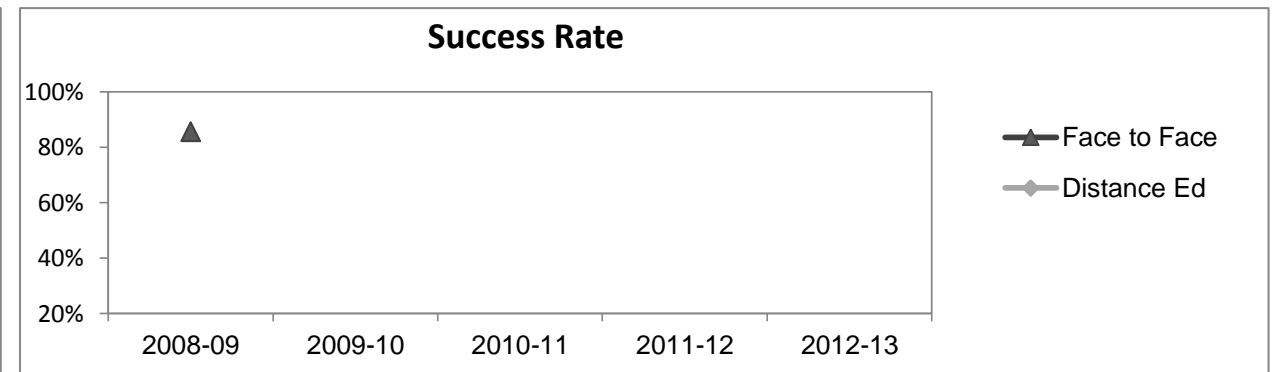
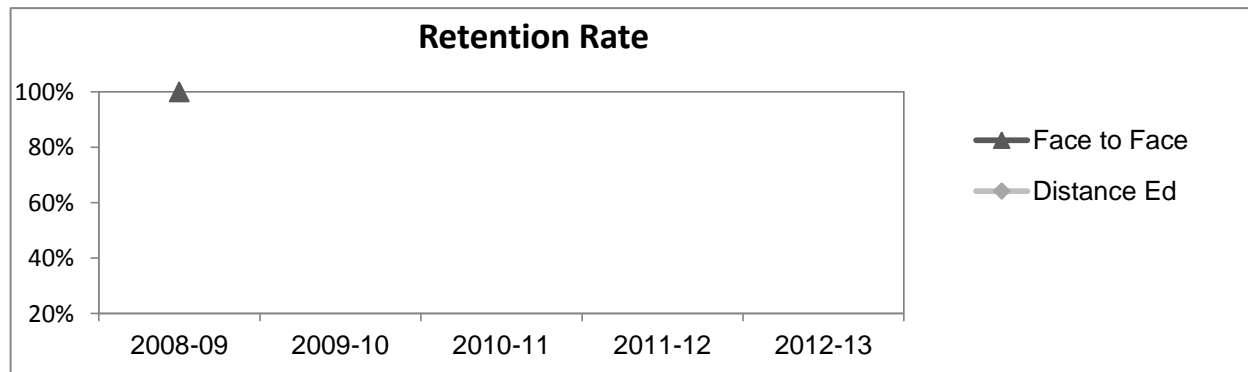
Course Enrollments - Productivity

	2008-09			2009-10			2010-11			2011-12			2012-13			2012-13		
	F-t-F ³	DE	Total	F-t-F ³	DE	Total	F-t-F ³	DE	Total	F-t-F ³	DE	Total	Subject			Collegewide		
	F-t-F ³	DE	Total	F-t-F ³	DE	Total	F-t-F ³	DE	Total	F-t-F ³	DE	Total	F-t-F ³	DE	Total	F-t-F ³	DE	Total
Number of Sections	1	0	1	0	0	0	0	0	0	0	0	0	0	0	0	511	519	1,030
Enrollment ⁴																		
Census	7	0	7	0	0	0	0	0	0	0	0	0	0	0	0	9,387	15,094	24,481
Students/Section ⁵	7		7													18	29	24
Productivity																		
FTES ⁶	0.5	0	0.5	0	0	0.0	0	0	0.0	0	0	0.0	0	0	0.0	1,368.1	1,573.3	2,941.4
FTEF ⁶	0.1	0	0.1	0	0	0.0	0	0	0.0	0	0	0.0	0	0	0.0	98.2	104.3	202.5
Contract			0%															38%
Overload			0%															12%
Adjunct			0%															36%
Summer			100%															14%
FTES/FTEF ⁷	3.7		3.7													13.9	15.1	14.5



Outcomes

	2008-09			2009-10			2010-11			2011-12			2012-13			2012-13		
	F-t-F ³	DE	Total	F-t-F ³	DE	Total	F-t-F ³	DE	Total	F-t-F ³	DE	Total	Subject			Collegewide		
	F-t-F ³	DE	Total	F-t-F ³	DE	Total	F-t-F ³	DE	Total	F-t-F ³	DE	Total	F-t-F ³	DE	Total	F-t-F ³	DE	Total
Retention Rate ⁸	100.0%		100.0%													90.1%	78.5%	83.0%
Success Rate ⁸	85.7%		85.7%													75.9%	61.0%	66.8%



Media Arts

Degrees - Certificates

	2008-09			2009-10			2010-11			2011-12			2012-13			Collegewide		
	AA	AS	CERT	AA	AS	CERT	AA	AS	CERT	AA	AS	CERT	AA	AS	CERT	AA	AS	CERT
Awards related to or contributed to by CIS & Business & Digital Arts																		
Business	7	1	0	0	2	2	5	6	3	0	7	1	0	4	3			
Business Administration	2	9	3	13	7	1	19	7	1	23	3	0	24	1	0			
Business Management	0	10	3	0	10	2	0	14	1	0	4	2	0	2	0			
Business Office Technology	0	0	0	0	3	0	0	6	1	0	2	0	0	1	5			
Computer Information Systems	0	3	3	0	3	0	0	7	1	0	5	3	0	9	1			
Computer Science	0	0	0	0	0	0	0	0	0	0	0	0	0	1	0			
Digital Animation	0	6	0	0	2	0	0	0	0	0	0	1	0	0	0			
Management	0	0	0	0	0	0	0	0	0	0	1	0	0	1	0			
Office Assistant	0	0	0	0	0	0	0	0	0	0	0	0	0	0	6			
Office Assistant I	0	0	0	0	0	0	0	0	1	0	0	1	0	0	0			
Office Clerk	0	0	0	0	0	0	0	0	0	0	0	0	0	0	6			
Paralegal Studies	0	2	3	0	1	3	0	2	2	0	0	5	0	4	6			
Small Business Mgmt/Entreprene	0	1	0	0	2	0	0	1	1	0	0	0	0	0	0			
Web Design	0	7	2	0	4	1	0	1	1	0	2	3	0	2	3			
Digital Animation	0	6	0	0	2	0	0	0	0	0	0	1	0	0	0			
Digital Media	2	0	0	3	0	0	7	3	0	0	3	0	0	3	0			
Total Awards by Type	11	45	14	16	36	9	31	47	12	23	27	17	24	28	30	193	61	121
% of total awards by type	16%	64%	20%	26%	59%	15%	34%	52%	13%	34%	40%	25%	29%	34%	37%	51%	16%	32%
Total Awards	70			61			90			67			82			375		
Liberal Arts/Math & Science	3	0	0	14	0	0	21	0	0	23	0	0	44	0	0			
Engineering	2	0	0	3	0	0	7	3	0	0	3	0	0	3	0			
Mathematics	0	0	0	0	0	0	0	0	0	2	0	0	0	3	0			
Human Services	0	0	0	0	6	0	0	5	0	0	8	0	0	6	0			
Human Services Worker	0	0	0	0	0	1	0	0	3	0	0	8	0	0	9			

Notes

- ¹ **Source:** ODS Reports (July, 2013)
- ² **Student Headcount, *Unduplicated*:** Number of students enrolled on census day, where each student is counted one time.
- ³ **F-t-F:** Face to Face instructional delivery mode.
- ⁴ **Enrollment:** Every course in which students are enrolled on census day.
- ⁵ **Students/Section:** Student enrollments per section on census day. Cross-listed sections are not combined.
- ⁶ Acronyms **FTES** and **FTEF** represent full-time equivalent students and full-time equivalent faculty, respectively.
- ⁷ **FTES/FTEF:** A measurement of productivity where the generally accepted target is 17.5.
- ⁸ **Success rate numerator:** Number of course enrollments with a successful passing grade (A,B,C,P/CR).
- Retention rate numerator:** Number of course enrollments retained through the semester (grade = A,B,C,P/CR,D,F,NP/NC,I).
- Success and Retention rate denominator:** Number of enrollments retained (A,B,C,P/CR,D,F,NP/NC,I), withdrawn (W), and dropped after Census Day (DR).