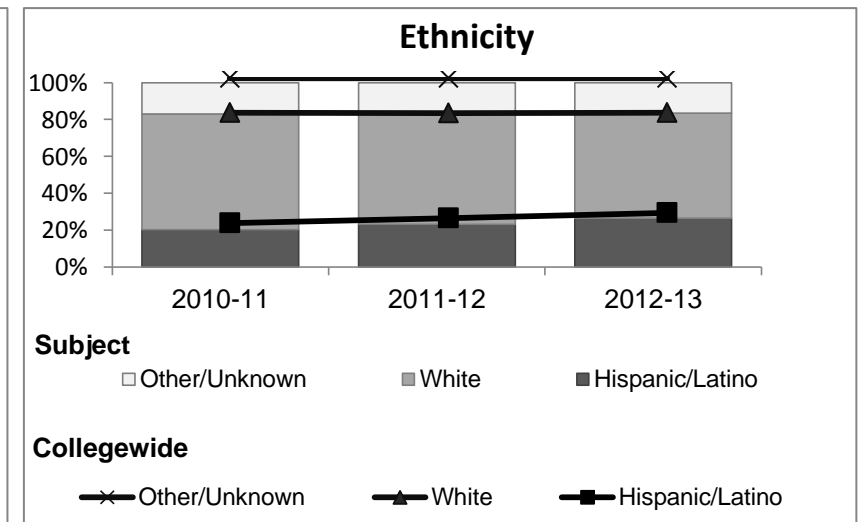
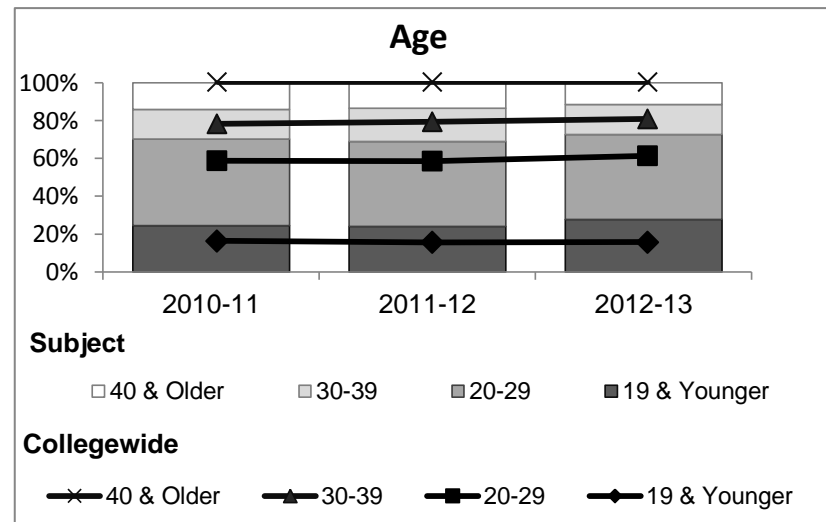
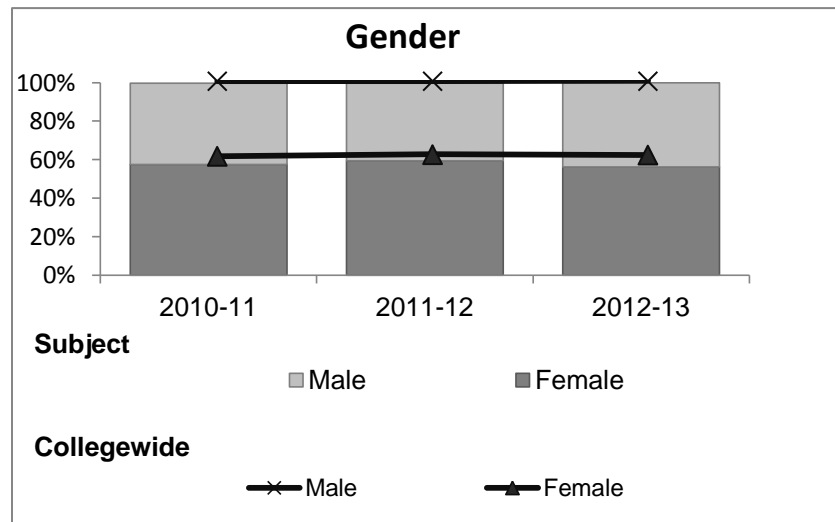


Mathematics

Student Demographic Information

Student Headcount	2008-09		2009-10		2010-11		2011-12		2012-13		2012-13	
	#	% change - Prior Yr	#	% change - Prior Yr	#	% change - Prior Yr	#	% change - Prior Yr	Subject		Collegewide	
									#	% change - Prior Yr	#	% change - Prior Yr
Unduplicated ²	1,988	--	2,128	7%	2,241	5%	2,130	-5%	1,854	-13%	8,583	-16%

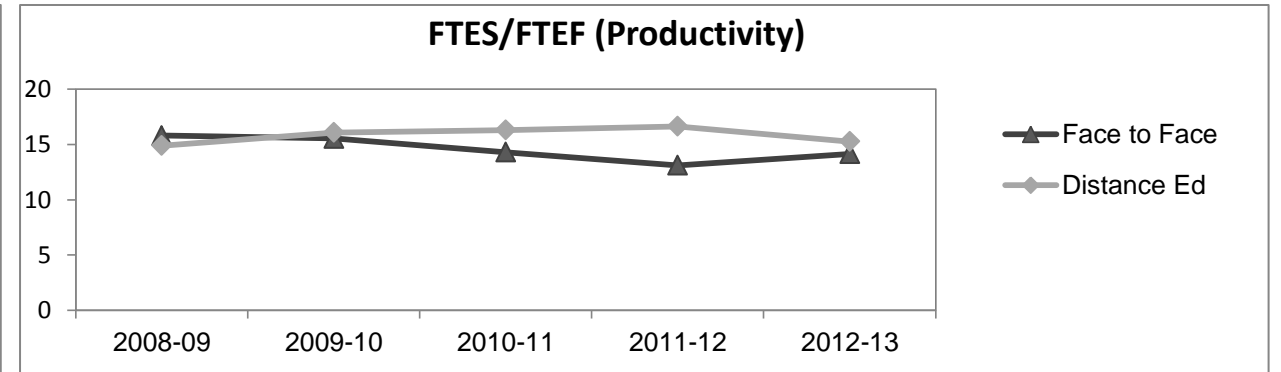
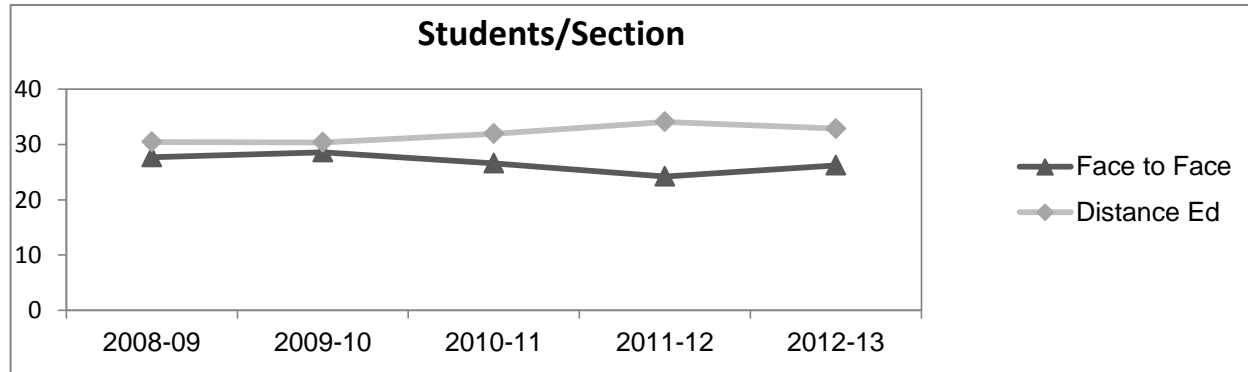
	2008-09		2009-10		2010-11		2011-12		2012-13		2012-13	
	#	%	#	%	#	%	#	%	Subject		Collegewide	
									#	%	#	%
Gender												
Female	1,187	60%	1,272	60%	1,287	57%	1,265	59%	1,044	56%	5,289	62%
Male	793	40%	849	40%	947	42%	856	40%	808	44%	3,283	38%
Unknown	8	0%	7	0%	7	0%	9	0%	2	0%	11	0%
Age												
19 & Younger	661	33%	576	27%	548	24%	513	24%	513	28%	1,298	15%
20-29	770	39%	920	43%	1,026	46%	955	45%	832	45%	3,929	46%
30-39	285	14%	325	15%	351	16%	375	18%	296	16%	1,671	19%
40 & Older	272	14%	307	14%	316	14%	287	13%	213	11%	1,685	20%
Ethnicity												
African American	89	4%	109	5%	98	4%	91	4%	69	4%	502	6%
American Indian	52	3%	48	2%	65	3%	41	2%	49	3%	177	2%
Asian/Filipino/Pac Islander	86	4%	85	4%	97	4%	88	4%	68	4%	416	5%
Hispanic/Latino	339	17%	375	18%	454	20%	493	23%	491	26%	2,554	30%
White	1,299	65%	1,407	66%	1,404	63%	1,296	61%	1,055	57%	4,480	52%
Two or more races	63	3%	61	3%	115	5%	115	5%	113	6%	413	5%
Unknown	60	3%	43	2%	8	0%	6	0%	9	0%	41	0%



Mathematics

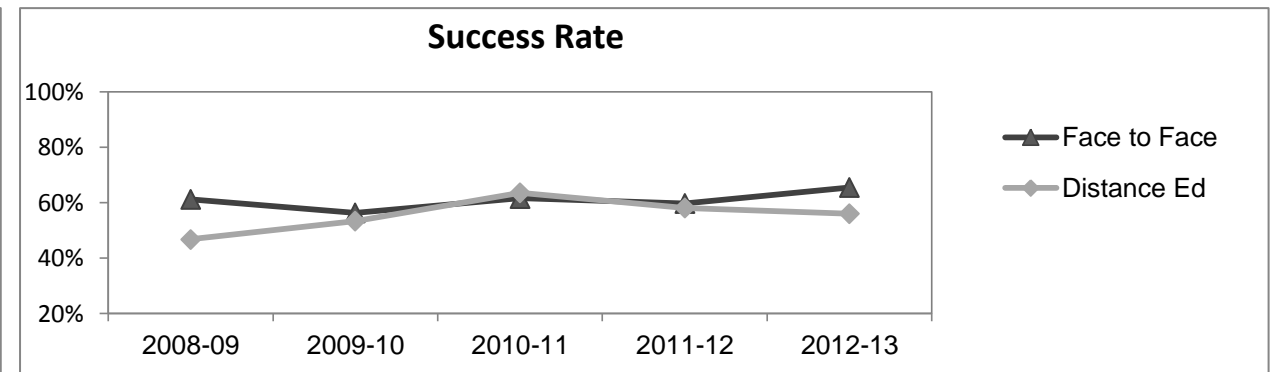
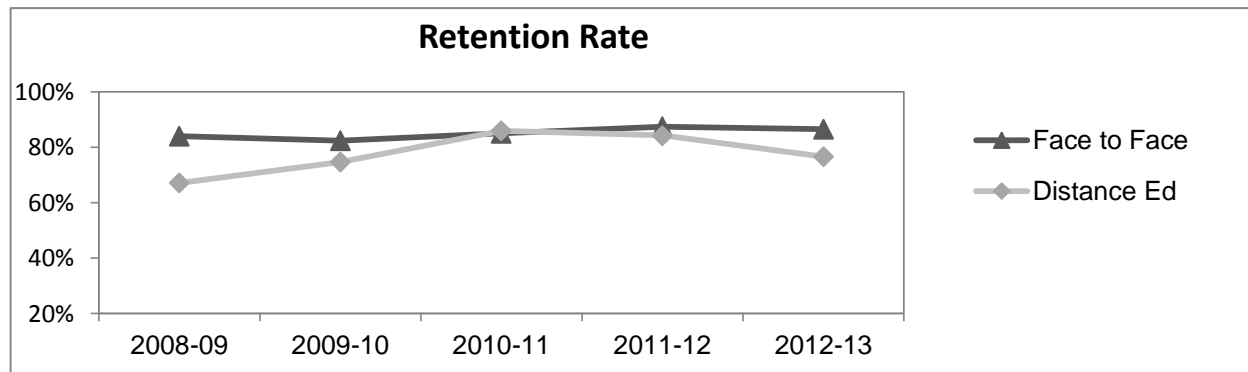
Course Enrollments - Productivity

	2008-09			2009-10			2010-11			2011-12			2012-13			2012-13		
	F-t-F ³	DE	Total	F-t-F ³	DE	Total	F-t-F ³	DE	Total	F-t-F ³	DE	Total	Subject			Collegewide		
	F-t-F ³	DE	Total	F-t-F ³	DE	Total	F-t-F ³	DE	Total	F-t-F ³	DE	Total	F-t-F ³	DE	Total	F-t-F ³	DE	Total
Number of Sections	62	30	92	47	49	96	48	53	101	50	47	97	52	34	86	511	519	1,030
Enrollment ⁴																		
Census	1,716	913	2,629	1,343	1,488	2,831	1,276	1,691	2,967	1,210	1,601	2,811	1,363	1,117	2,480	9,387	15,094	24,481
Students/Section ⁵	28	30	29	29	30	29	27	32	29	24	34	29	26	33	29	18	29	24
Productivity																		
FTES ⁶	244.3	111.2	355.5	196.9	187.5	384.3	184.9	213.0	397.9	175.7	204.1	379.7	196.1	141.3	337.3	1,368.1	1,573.3	2,941.4
FTEF ⁶	15.5	7.5	23.0	12.7	11.7	24.3	12.9	13.1	26.0	13.4	12.3	25.7	13.9	9.3	23.1	98.2	104.3	202.5
Contract			40%			46%			46%			47%			49%			38%
Overload			15%			15%			20%			18%			15%			12%
Adjunct			31%			21%			20%			23%			23%			36%
Summer			15%			19%			14%			12%			13%			14%
FTES/FTEF ⁷	15.8	14.9	15.5	15.5	16.1	15.8	14.3	16.3	15.3	13.1	16.6	14.8	14.1	15.2	14.6	13.9	15.1	14.5



Outcomes

	2008-09			2009-10			2010-11			2011-12			2012-13			2012-13		
	F-t-F ³	DE	Total	F-t-F ³	DE	Total	F-t-F ³	DE	Total	F-t-F ³	DE	Total	Subject			Collegewide		
	F-t-F ³	DE	Total	F-t-F ³	DE	Total	F-t-F ³	DE	Total	F-t-F ³	DE	Total	F-t-F ³	DE	Total	F-t-F ³	DE	Total
Retention Rate ⁸	84.0%	67.1%	78.2%	82.4%	74.6%	78.3%	85.0%	85.9%	85.5%	87.4%	84.2%	85.6%	86.5%	76.5%	82.0%	90.1%	78.5%	83.0%
Success Rate ⁸	61.2%	46.7%	56.2%	56.3%	53.4%	54.8%	61.5%	63.5%	62.7%	59.7%	58.0%	58.7%	65.4%	56.0%	61.2%	75.9%	61.0%	66.8%



Mathematics

Degrees - Certificates

													2012-13					
	2008-09			2009-10			2010-11			2011-12			Subject			Collegewide		
	AA	AS	CERT	AA	AS	CERT	AA	AS	CERT	AA	AS	CERT	AA	AS	CERT	AA	AS	CERT
Awards related to or contributed to by Mathematics																		
Mathematics	0	0	0	0	0	0	0	0	0	2	0	0	0	3	0			
Total Awards by Type	0	0	0	0	0	0	0	0	0	2	0	0	0	3	0	193	61	121
% of total awards by type										100%	0%	0%	0%	100%	0%	51%	16%	32%
Total Awards	0			0			0			2			3			375		
Liberal Arts/Math & Science	3	0	0	14	0	0	21	0	0	23	0	0	44	0	0			
Liberal Arts/Social & Behvrl	28	0	0	24	0	0	79	0	0	58	0	0	62	0	0			
Computer Science	0	0	0	0	0	0	0	0	0	0	0	0	0	1	0			
Engineering	2	0	0	3	0	0	7	3	0	0	3	0	0	3	0			
Computer Information Systems	0	3	3	0	3	0	0	7	1	0	5	3	0	9	1			
Business Administration	2	9	3	13	7	1	19	7	1	23	3	0	24	1	0			
Welding Technology	0	0	2	0	0	4	0	1	3	0	4	11	0	7	15			
General Science	0	0	0	6	0	0	4	0	0	2	0	0	5	0	0			
Administration of Justice	0	7	7	0	12	6	0	17	6	0	2	3	0	6	3			
Physical Education	0	0	0	0	0	0	0	0	0	1	0	0	1	0	0			

Notes

- ¹ **Source:** ODS Reports (July, 2013)
- ² **Student Headcount, *Unduplicated*:** Number of students enrolled on census day, where each student is counted one time.
- ³ **F-t-F:** Face to Face instructional delivery mode.
- ⁴ **Enrollment:** Every course in which students are enrolled on census day.
- ⁵ **Students/Section:** Student enrollments per section on census day. Cross-listed sections are not combined.
- ⁶ Acronyms **FTES** and **FTEF** represent full-time equivalent students and full-time equivalent faculty, respectively.
- ⁷ **FTES/FTEF:** A measurement of productivity where the generally accepted target is 17.5.
- ⁸ **Success rate numerator:** Number of course enrollments with a successful passing grade (A,B,C,P/CR).
- Retention rate numerator:** Number of course enrollments retained through the semester (grade = A,B,C,P/CR,D,F,NP/NC,I).
- Success and Retention rate denominator:** Number of enrollments retained (A,B,C,P/CR,D,F,NP/NC,I), withdrawn (W), and dropped after Census Day (DR).