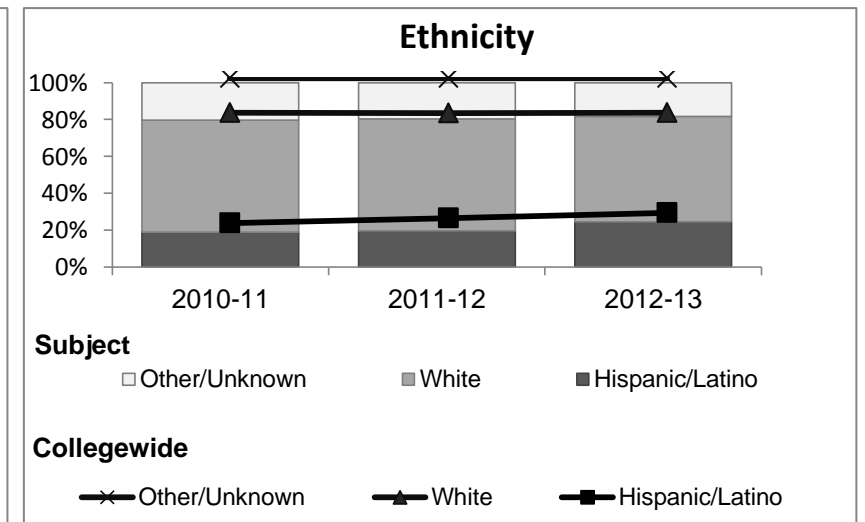
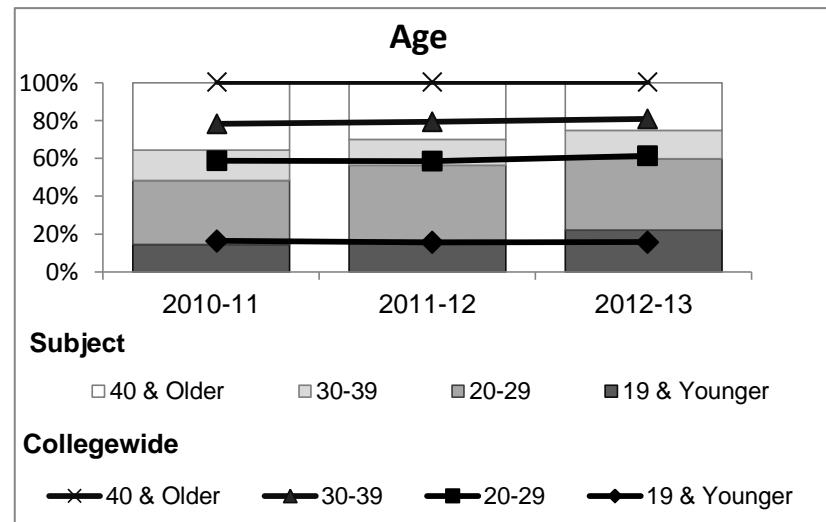
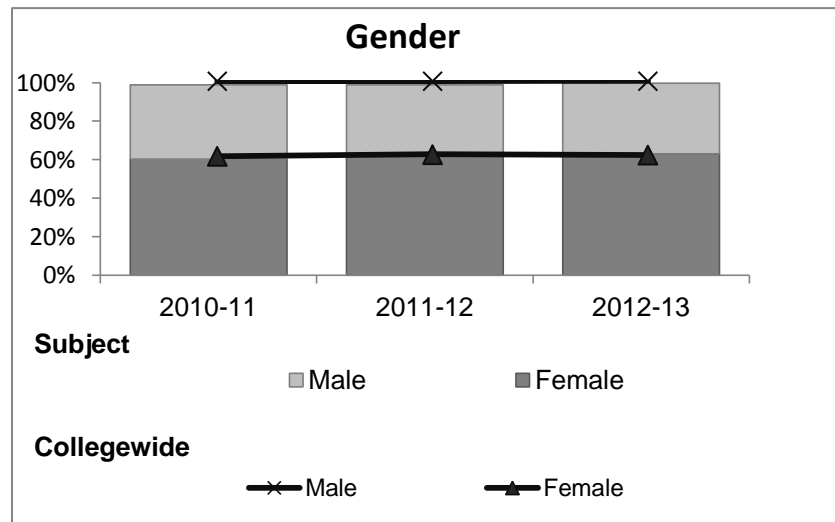


## Interdisciplinary Studies

### Student Demographic Information

Student Headcount	2008-09		2009-10		2010-11		2011-12		2012-13		2012-13	
	#	% change - Prior Yr	#	% change - Prior Yr	#	% change - Prior Yr	#	% change - Prior Yr	Subject		Collegewide	
									#	% change - Prior Yr	#	% change - Prior Yr
Unduplicated <sup>2</sup>	1,145	--	539	-53%	472	-12%	330	-30%	350	6%	8,583	-16%

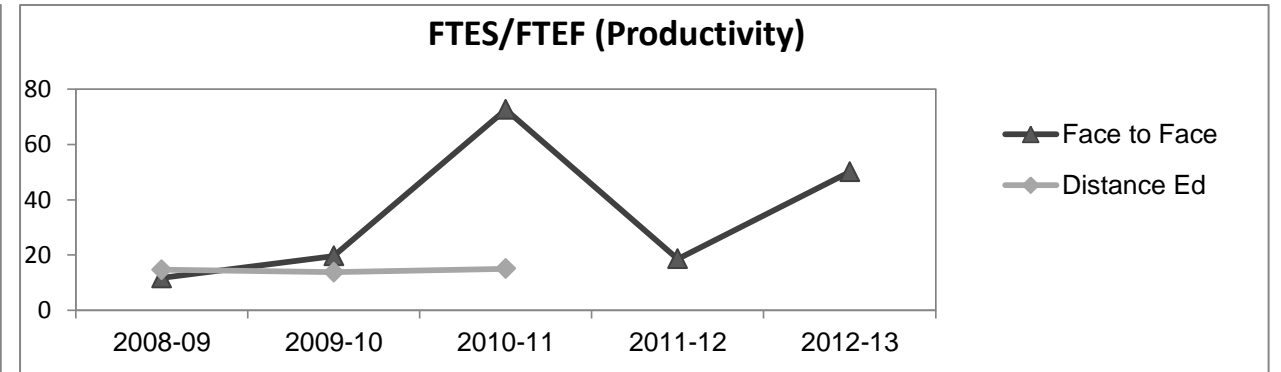
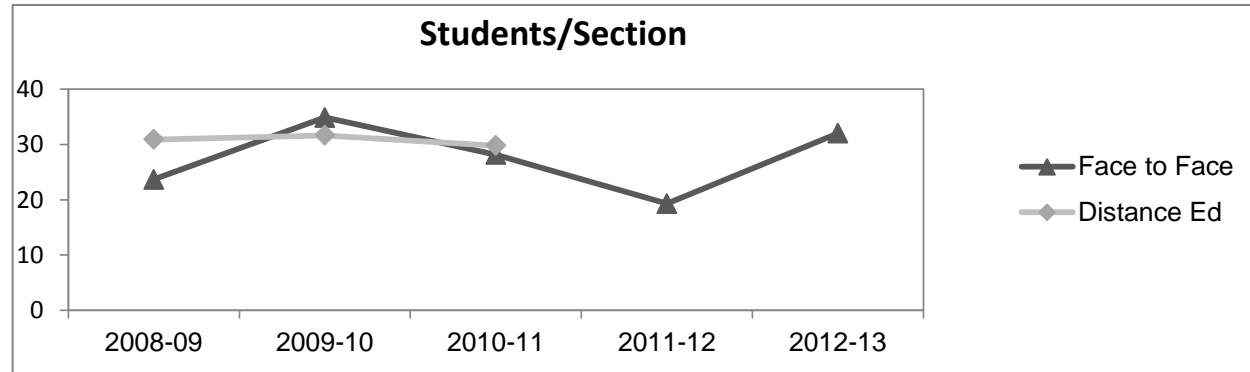
	2008-09		2009-10		2010-11		2011-12		2012-13		2012-13	
	#	%	#	%	#	%	#	%	Subject		Collegewide	
									#	%	#	%
<b>Gender</b>												
Female	722	63%	352	65%	285	60%	208	63%	221	63%	5,289	62%
Male	418	37%	184	34%	181	38%	118	36%	128	37%	3,283	38%
Unknown	5	0%	3	1%	6	1%	4	1%	1	0%	11	0%
<b>Age</b>												
19 & Younger	355	31%	92	17%	68	14%	55	17%	77	22%	1,298	15%
20-29	334	29%	153	28%	160	34%	131	40%	132	38%	3,929	46%
30-39	168	15%	99	18%	76	16%	45	14%	53	15%	1,671	19%
40 & Older	288	25%	195	36%	168	36%	99	30%	88	25%	1,685	20%
<b>Ethnicity</b>												
African American	59	5%	43	8%	37	8%	24	7%	19	5%	502	6%
American Indian	78	7%	18	3%	20	4%	12	4%	7	2%	177	2%
Asian/Filipino/Pac Islander	46	4%	35	6%	20	4%	13	4%	15	4%	416	5%
Hispanic/Latino	185	16%	87	16%	89	19%	65	20%	86	25%	2,554	30%
White	699	61%	325	60%	287	61%	200	61%	200	57%	4,480	52%
Two or more races	31	3%	16	3%	18	4%	16	5%	23	7%	413	5%
Unknown	47	4%	15	3%	1	0%	0	0%	0	0%	41	0%



## Interdisciplinary Studies

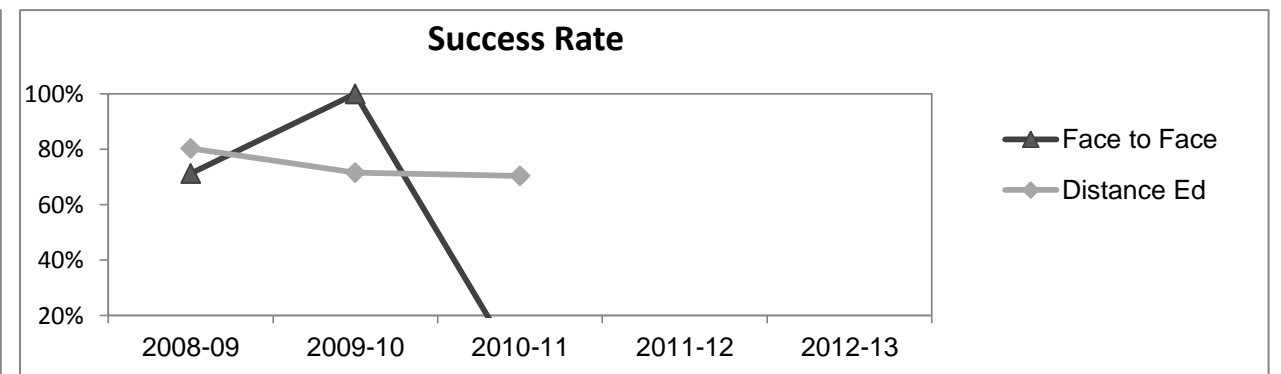
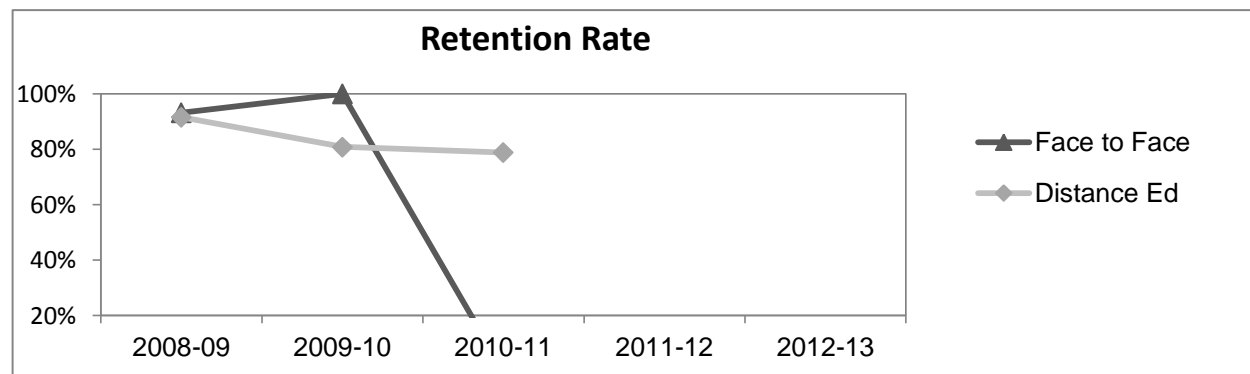
### Course Enrollments - Productivity

	2008-09			2009-10			2010-11			2011-12			2012-13			2012-13		
	F-t-F <sup>3</sup>	DE	Total	F-t-F <sup>3</sup>	DE	Total	F-t-F <sup>3</sup>	DE	Total	F-t-F <sup>3</sup>	DE	Total	Subject			Collegewide		
	F-t-F <sup>3</sup>	DE	Total	F-t-F <sup>3</sup>	DE	Total	F-t-F <sup>3</sup>	DE	Total	F-t-F <sup>3</sup>	DE	Total	F-t-F <sup>3</sup>	DE	Total	F-t-F <sup>3</sup>	DE	Total
Number of Sections	36	8	44	6	11	17	8	4	12	7	0	7	6	0	6	511	519	1,030
Enrollment <sup>4</sup>																		
Census	851	247	1,098	209	348	557	225	119	344	135	0	135	192	0	192	9,387	15,094	24,481
Students/Section <sup>5</sup>	24	31	25	35	32	33	28	30	29	19		19	32		32	18	29	24
Productivity																		
FTES <sup>6</sup>	79.3	20.1	99.4	15.4	27.2	42.6	14.5	10.5	25.0	6.5	0	6.5	10.0	0	10.0	1,368.1	1,573.3	2,941.4
FTEF <sup>6</sup>	6.8	1.4	8.1	0.8	2.0	2.7	0.2	0.7	0.9	0.4	0	0.4	0.2	0	0.2	98.2	104.3	202.5
<i>Contract</i>			26%			16%			22%			100%			100%			38%
<i>Overload</i>			33%			1%			0%			0%			0%			12%
<i>Adjunct</i>			27%			34%			15%			0%			0%			36%
<i>Summer</i>			13%			48%			63%			0%			0%			14%
FTES/FTEF <sup>7</sup>	11.7	14.7	12.2	19.7	13.8	15.5	72.6	15.1	27.9	18.6		18.6	50.1		50.1	13.9	15.1	14.5



### Outcomes

	2008-09			2009-10			2010-11			2011-12			2012-13			2012-13		
	F-t-F <sup>3</sup>	DE	Total	F-t-F <sup>3</sup>	DE	Total	F-t-F <sup>3</sup>	DE	Total	F-t-F <sup>3</sup>	DE	Total	Subject			Collegewide		
	F-t-F <sup>3</sup>	DE	Total	F-t-F <sup>3</sup>	DE	Total	F-t-F <sup>3</sup>	DE	Total	F-t-F <sup>3</sup>	DE	Total	F-t-F <sup>3</sup>	DE	Total	F-t-F <sup>3</sup>	DE	Total
Retention Rate <sup>8</sup>	93.2%	91.5%	92.7%	100.0%	80.8%	81.7%	0.0%	78.8%	78.8%	0.0%		0.0%	0.0%		0.0%	90.1%	78.5%	83.0%
Success Rate <sup>8</sup>	71.3%	80.4%	74.0%	100.0%	71.5%	72.8%	0.0%	70.3%	70.3%	0.0%		0.0%	0.0%		0.0%	75.9%	61.0%	66.8%



## Interdisciplinary Studies

## Degrees - Certificates

													2012-13					
	2008-09			2009-10			2010-11			2011-12			Subject			Collegewide		
	AA	AS	CERT	AA	AS	CERT	AA	AS	CERT	AA	AS	CERT	AA	AS	CERT	AA	AS	CERT
Awards related to or contributed to by Social Science																		
Social Science	30	0	0	21	0	0	13	0	0	1	0	0	3	0	0			
Humanities	3	0	0	3	0	0	3	0	0	0	0	0	0	0	0			
<b>Total Awards by Type</b>	33	0	0	24	0	0	16	0	0	1	0	0	3	0	0	193	61	121
<b>% of total awards by type</b>	100%	0%	0%	100%	0%	0%	100%	0%	0%	100%	0%	0%	100%	0%	0%	51%	16%	32%
<b>Total Awards</b>	33			24			16			1			3			375		
Liberal Arts/Social & Behvrl	28	0	0	24	0	0	79	0	0	58	0	0	62	0	0			
Liberal Arts/Math & Science	3	0	0	14	0	0	21	0	0	23	0	0	44	0	0			
Business Administration	2	9	3	13	7	1	19	7	1	23	3	0	24	1	0			
Liberal Arts/Arts & Humanities	3	0	0	13	0	0	33	0	0	37	0	0	42	0	0			
Human Services	0	0	0	0	6	0	0	5	0	0	8	0	0	6	0			
Human Services Worker	0	0	0	0	0	1	0	0	3	0	0	8	0	0	9			
Administration of Justice	0	7	7	0	12	6	0	17	6	0	2	3	0	6	3			

**Notes**<sup>1</sup> **Source:** ODS Reports (July, 2013)<sup>2</sup> **Student Headcount, *Unduplicated*:** Number of students enrolled on census day, where each student is counted one time.<sup>3</sup> **F-t-F:** Face to Face instructional delivery mode.<sup>4</sup> **Enrollment:** Every course in which students are enrolled on census day.<sup>5</sup> **Students/Section:** Student enrollments per section on census day. Cross-listed sections are not combined.<sup>6</sup> Acronyms **FTES** and **FTEF** represent full-time equivalent students and full-time equivalent faculty, respectively.<sup>7</sup> **FTES/FTEF:** A measurement of productivity where the generally accepted target is 17.5.<sup>8</sup> **Success rate numerator:** Number of course enrollments with a successful passing grade (A,B,C,P/CR).**Retention rate numerator:** Number of course enrollments retained through the semester (grade = A,B,C,P/CR,D,F,NP/NC,I).**Success and Retention rate denominator:** Number of enrollments retained (A,B,C,P/CR,D,F,NP/NC,I), withdrawn (W), and dropped after Census Day (DR).