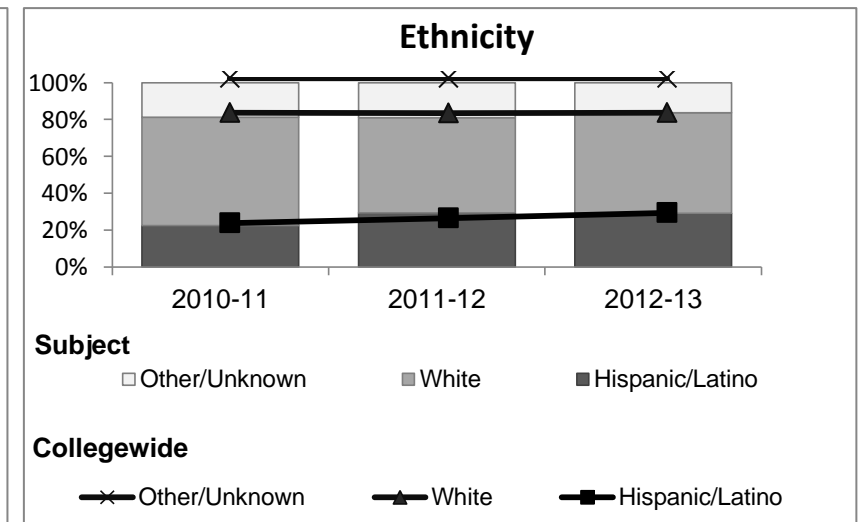
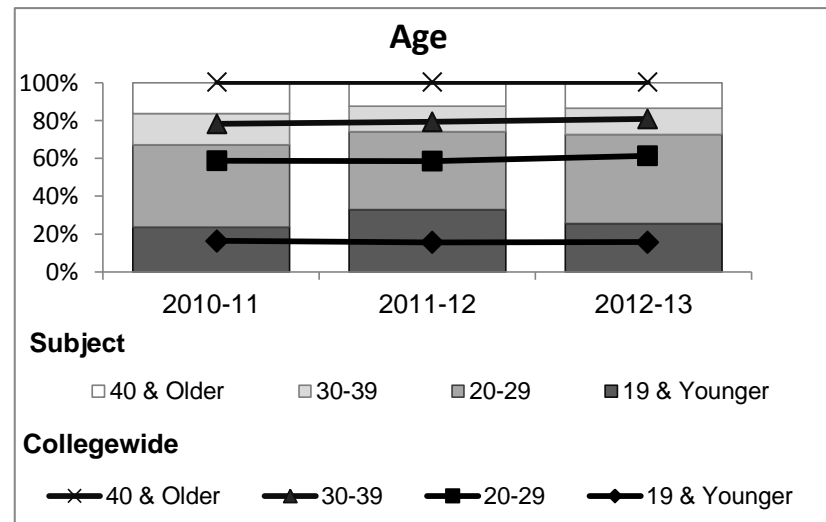
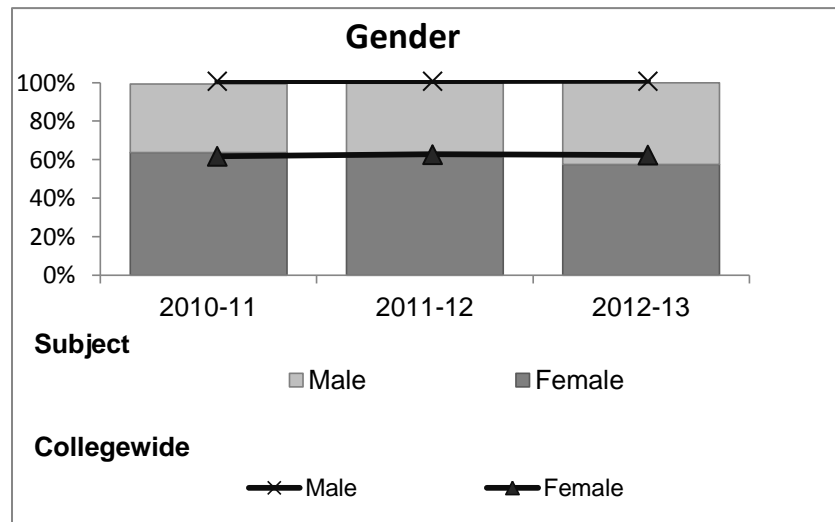


Health Science

Student Demographic Information

Student Headcount	2008-09		2009-10		2010-11		2011-12		2012-13		2012-13	
	#	% change - Prior Yr	#	% change - Prior Yr	#	% change - Prior Yr	#	% change - Prior Yr	Subject		Collegewide	
									#	% change - Prior Yr	#	% change - Prior Yr
Unduplicated ²	518	--	512	-1%	614	20%	615	0%	487	-21%	8,583	-16%

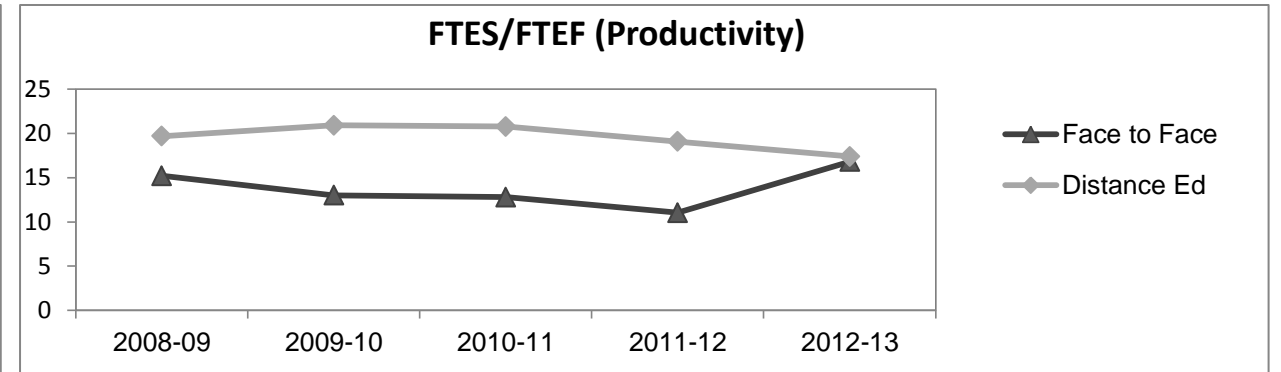
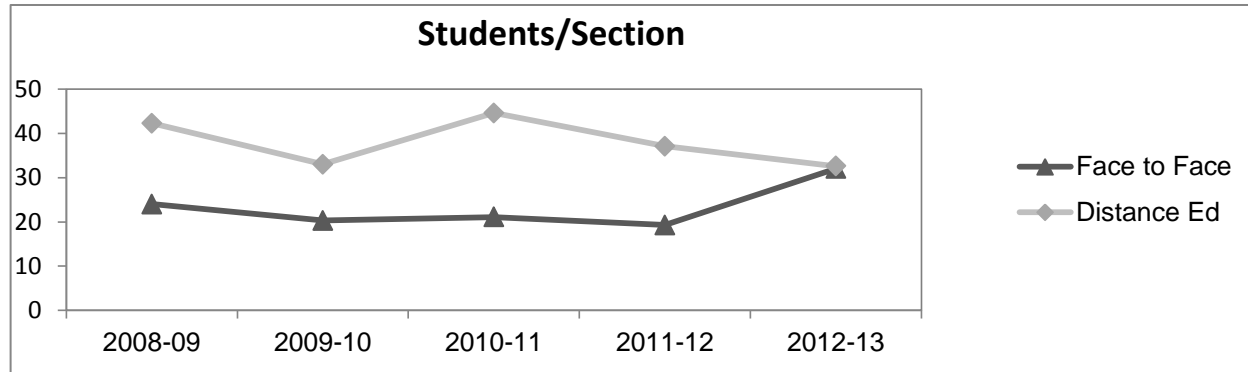
	2008-09		2009-10		2010-11		2011-12		2012-13		2012-13	
	#	%	#	%	#	%	#	%	Subject		Collegewide	
									#	%	#	%
Gender												
Female	330	64%	310	61%	391	64%	377	61%	280	57%	5,289	62%
Male	186	36%	199	39%	219	36%	236	38%	207	43%	3,283	38%
Unknown	2	0%	3	1%	4	1%	2	0%	0	0%	11	0%
Age												
19 & Younger	161	31%	158	31%	145	24%	203	33%	124	25%	1,298	15%
20-29	228	44%	204	40%	268	44%	253	41%	229	47%	3,929	46%
30-39	52	10%	68	13%	101	16%	82	13%	68	14%	1,671	19%
40 & Older	77	15%	82	16%	100	16%	77	13%	66	14%	1,685	20%
Ethnicity												
African American	26	5%	21	4%	48	8%	52	8%	29	6%	502	6%
American Indian	18	3%	11	2%	17	3%	12	2%	8	2%	177	2%
Asian/Filipino/Pac Islander	19	4%	23	4%	20	3%	19	3%	12	2%	416	5%
Hispanic/Latino	76	15%	92	18%	138	22%	180	29%	142	29%	2,554	30%
White	352	68%	338	66%	361	59%	318	52%	265	54%	4,480	52%
Two or more races	12	2%	18	4%	29	5%	33	5%	30	6%	413	5%
Unknown	15	3%	9	2%	1	0%	1	0%	1	0%	41	0%



Health Science

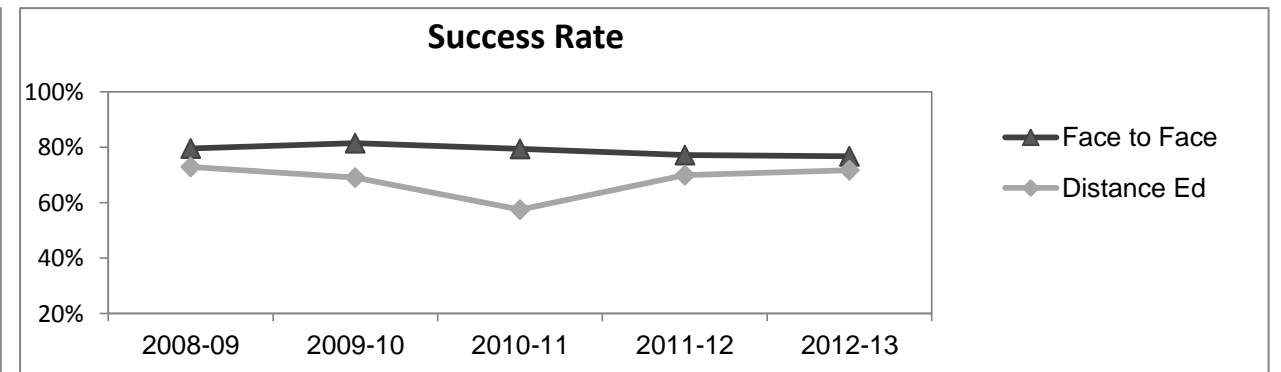
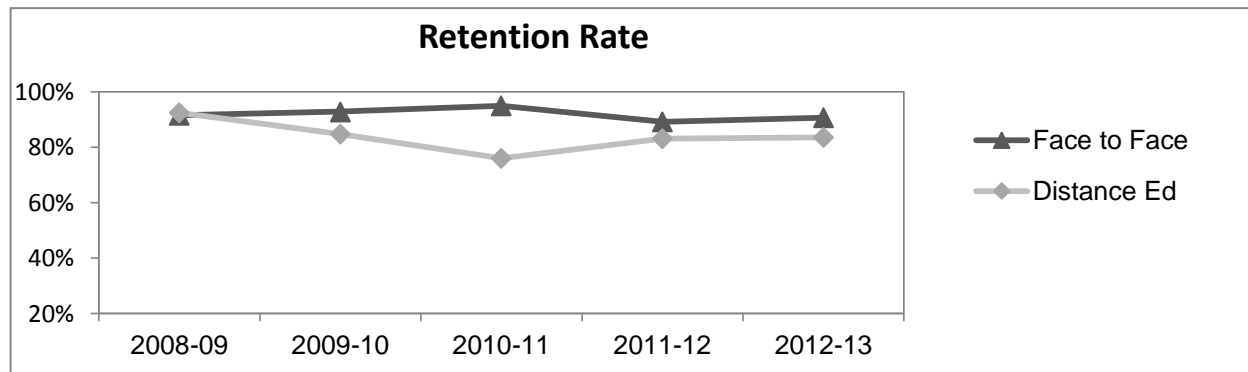
Course Enrollments - Productivity

	2008-09			2009-10			2010-11			2011-12			2012-13			2012-13		
	F-t-F ³	DE	Total	F-t-F ³	DE	Total	F-t-F ³	DE	Total	F-t-F ³	DE	Total	Subject			Collegewide		
	F-t-F ³	DE	Total	F-t-F ³	DE	Total	F-t-F ³	DE	Total	F-t-F ³	DE	Total	F-t-F ³	DE	Total	F-t-F ³	DE	Total
Number of Sections	16	4	20	13	9	22	14	9	23	10	12	22	6	9	15	511	519	1,030
Enrollment ⁴																		
Census	384	169	553	264	297	561	295	401	696	193	445	638	192	293	485	9,387	15,094	24,481
Students/Section ⁵	24	42	28	20	33	26	21	45	30	19	37	29	32	33	32	18	29	24
Productivity																		
FTES ⁶	28.3	15.7	44.0	16.9	29.3	46.1	19.2	37.4	56.5	13.1	41.9	55.0	20.2	27.8	48.0	1,368.1	1,573.3	2,941.4
FTEF ⁶	1.9	0.8	2.7	1.3	1.4	2.7	1.5	1.8	3.3	1.2	2.2	3.4	1.2	1.6	2.8	98.2	104.3	202.5
<i>Contract</i>			15%			52%			67%			55%			63%			38%
<i>Overload</i>			45%			15%			6%			16%			9%			12%
<i>Adjunct</i>			22%			16%			13%			16%			14%			36%
<i>Summer</i>			18%			18%			14%			13%			14%			14%
FTES/FTEF ⁷	15.2	19.7	16.5	13.0	20.9	17.1	12.8	20.8	17.1	11.0	19.1	16.2	16.8	17.4	17.1	13.9	15.1	14.5



Outcomes

	2008-09			2009-10			2010-11			2011-12			2012-13			2012-13		
	F-t-F ³	DE	Total	F-t-F ³	DE	Total	F-t-F ³	DE	Total	F-t-F ³	DE	Total	Subject			Collegewide		
	F-t-F ³	DE	Total	F-t-F ³	DE	Total	F-t-F ³	DE	Total	F-t-F ³	DE	Total	F-t-F ³	DE	Total	F-t-F ³	DE	Total
Retention Rate ⁸	91.6%	92.5%	91.9%	92.8%	84.7%	88.3%	95.0%	76.0%	83.5%	89.2%	83.1%	84.8%	90.7%	83.6%	86.4%	90.1%	78.5%	83.0%
Success Rate ⁸	79.6%	72.8%	77.4%	81.4%	69.0%	74.6%	79.4%	57.4%	66.1%	77.2%	70.0%	72.0%	76.7%	71.7%	73.7%	75.9%	61.0%	66.8%



Health Science

Degrees - Certificates

													2012-13					
	2008-09			2009-10			2010-11			2011-12			Subject			Collegewide		
	AA	AS	CERT	AA	AS	CERT	AA	AS	CERT	AA	AS	CERT	AA	AS	CERT	AA	AS	CERT
Awards related to or contributed to by Kinesiology																		
Physical Education	0	0	0	0	0	0	0	0	0	1	0	0	1	0	0			
Total Awards by Type	0	0	0	0	0	0	0	0	0	1	0	0	1	0	0	193	61	121
% of total awards by type										100%	0%	0%	100%	0%	0%	51%	16%	32%
Total Awards	0			0			0			1			1			375		

Notes

¹ **Source:** ODS Reports (July, 2013)

² **Student Headcount, *Unduplicated*:** Number of students enrolled on census day, where each student is counted one time.

³ **F-t-F:** Face to Face instructional delivery mode.

⁴ **Enrollment:** Every course in which students are enrolled on census day.

⁵ **Students/Section:** Student enrollments per section on census day. Cross-listed sections are not combined.

⁶ Acronyms **FTES** and **FTEF** represent full-time equivalent students and full-time equivalent faculty, respectively.

⁷ **FTES/FTEF:** A measurement of productivity where the generally accepted target is 17.5.

⁸ **Success rate numerator:** Number of course enrollments with a successful passing grade (A,B,C,P/CR).

Retention rate numerator: Number of course enrollments retained through the semester (grade = A,B,C,P/CR,D,F,NP/NC,I).

Success and Retention rate denominator: Number of enrollments retained (A,B,C,P/CR,D,F,NP/NC,I), withdrawn (W), and dropped after Census Day (DR).