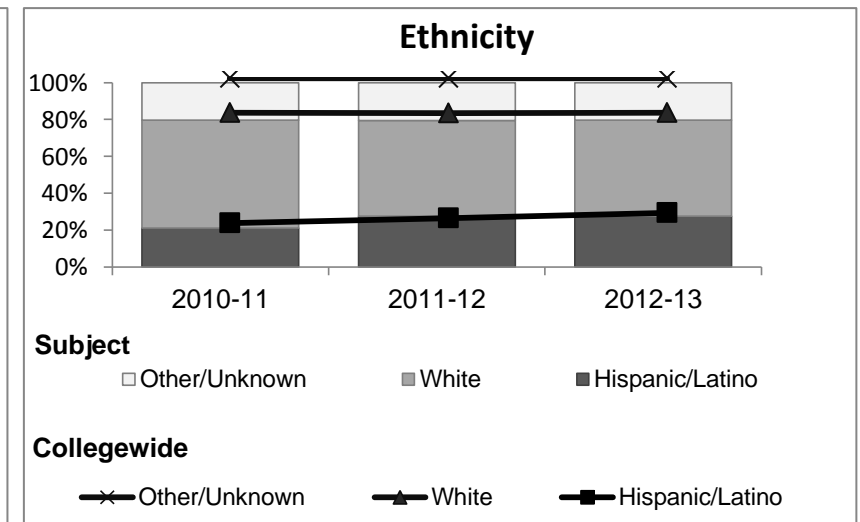
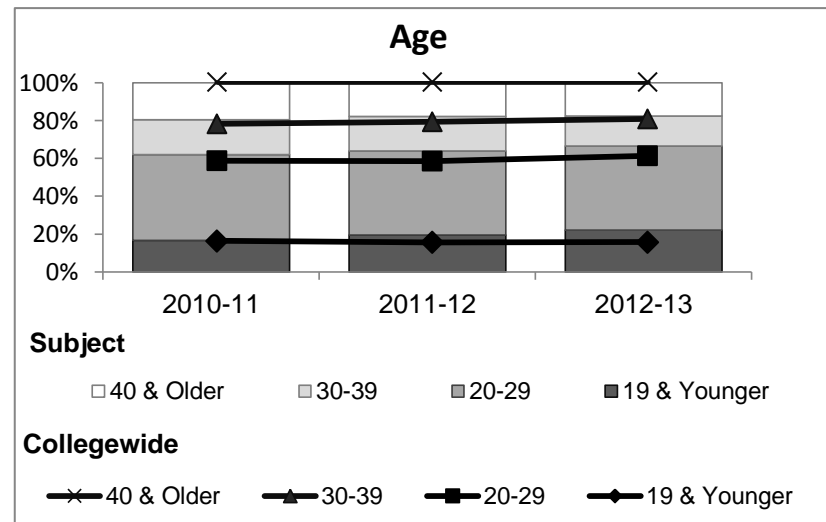
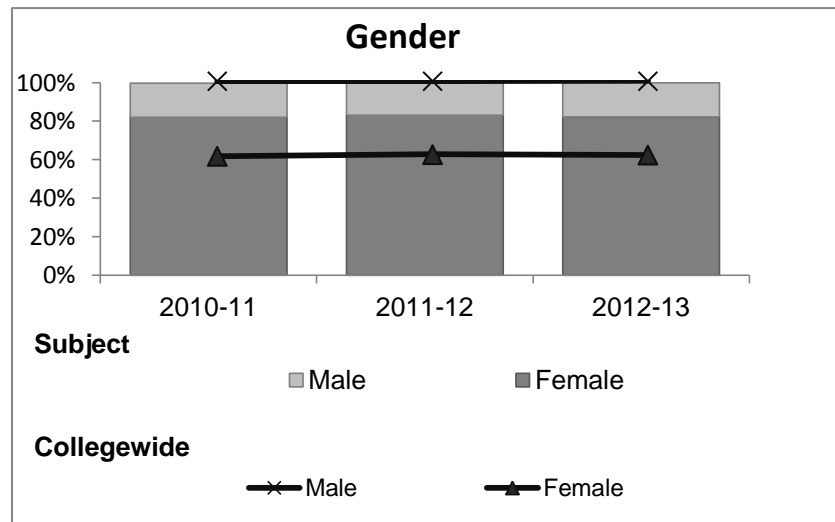


Health Careers

Student Demographic Information

Student Headcount	2008-09		2009-10		2010-11		2011-12		2012-13		2012-13	
	#	% change - Prior Yr	#	% change - Prior Yr	#	% change - Prior Yr	#	% change - Prior Yr	Subject		Collegewide	
									#	% change - Prior Yr	#	% change - Prior Yr
Unduplicated ²	701	--	971	39%	1,124	16%	1,045	-7%	891	-15%	8,583	-16%

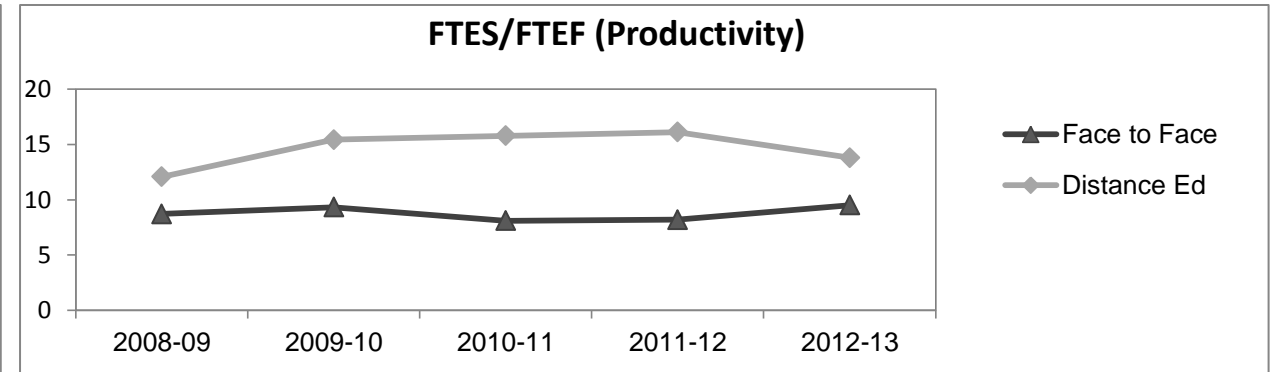
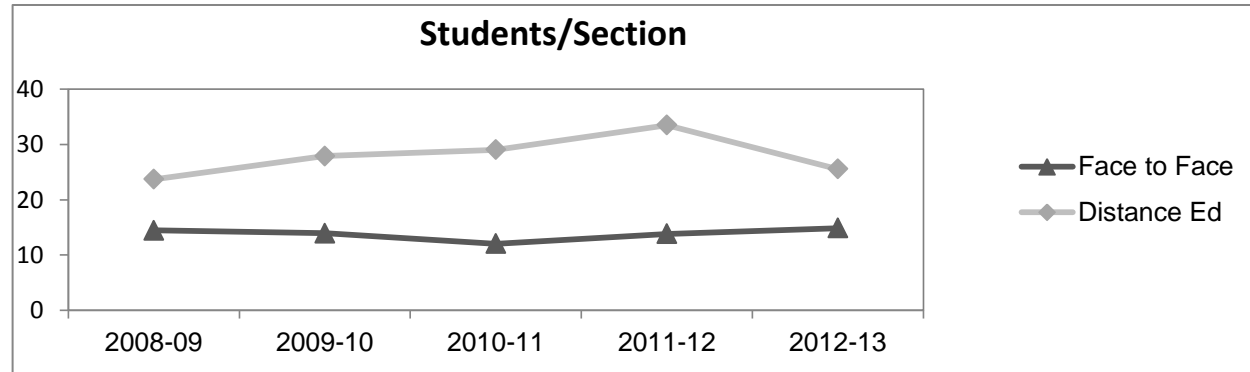
	2008-09		2009-10		2010-11		2011-12		2012-13		2012-13	
	#	%	#	%	#	%	#	%	Subject		Collegewide	
									#	%	#	%
Gender												
Female	581	83%	821	85%	922	82%	868	83%	733	82%	5,289	62%
Male	113	16%	146	15%	199	18%	175	17%	158	18%	3,283	38%
Unknown	7	1%	4	0%	3	0%	2	0%	0	0%	11	0%
Age												
19 & Younger	186	27%	209	22%	188	17%	204	20%	196	22%	1,298	15%
20-29	264	38%	411	42%	509	45%	465	44%	397	45%	3,929	46%
30-39	128	18%	167	17%	206	18%	190	18%	141	16%	1,671	19%
40 & Older	122	17%	184	19%	221	20%	186	18%	157	18%	1,685	20%
Ethnicity												
African American	47	7%	59	6%	94	8%	79	8%	53	6%	502	6%
American Indian	19	3%	27	3%	24	2%	33	3%	23	3%	177	2%
Asian/Filipino/Pac Islander	33	5%	50	5%	46	4%	52	5%	51	6%	416	5%
Hispanic/Latino	120	17%	193	20%	237	21%	289	28%	245	27%	2,554	30%
White	432	62%	589	61%	659	59%	541	52%	464	52%	4,480	52%
Two or more races	23	3%	37	4%	57	5%	47	4%	50	6%	413	5%
Unknown	27	4%	16	2%	7	1%	4	0%	5	1%	41	0%



Health Careers

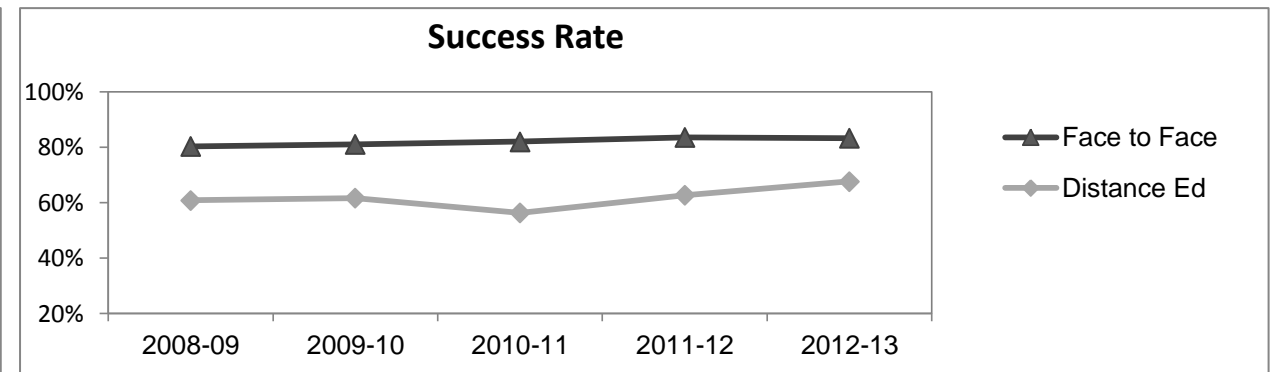
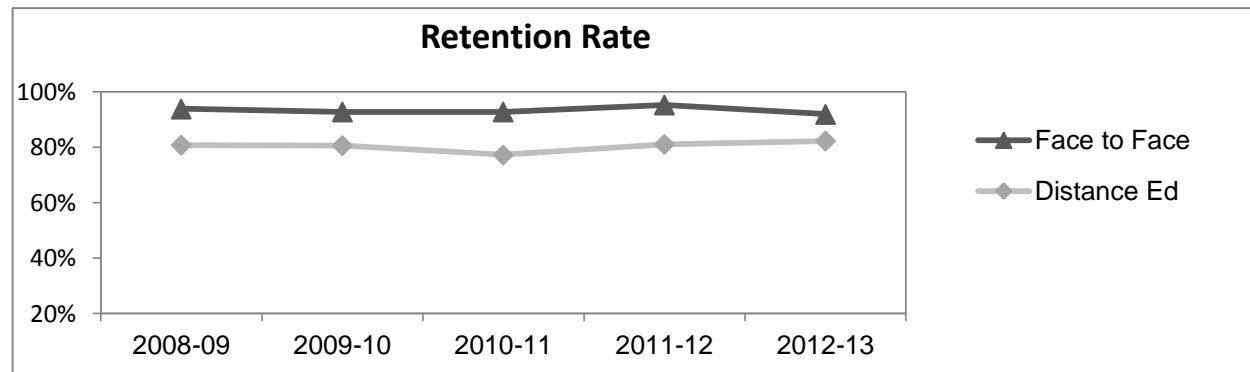
Course Enrollments - Productivity

	2008-09			2009-10			2010-11			2011-12			2012-13			2012-13		
	F-t-F ³	DE	Total	F-t-F ³	DE	Total	F-t-F ³	DE	Total	F-t-F ³	DE	Total	Subject			Collegewide		
	F-t-F ³	DE	Total	F-t-F ³	DE	Total	F-t-F ³	DE	Total	F-t-F ³	DE	Total	F-t-F ³	DE	Total	F-t-F ³	DE	Total
Number of Sections	38	22	60	35	37	72	35	43	78	36	30	66	36	38	74	511	519	1,030
Enrollment ⁴																		
Census	550	521	1,071	488	1,031	1,519	422	1,249	1,671	498	1,004	1,502	536	970	1,506	9,387	15,094	24,481
Students/Section ⁵	14	24	18	14	28	21	12	29	21	14	33	23	15	26	20	18	29	24
Productivity																		
FTES ⁶	122.6	57.1	179.7	124.3	110.0	234.2	105.2	133.4	238.6	105.8	108.4	214.2	109.0	87.3	196.3	1,368.1	1,573.3	2,941.4
FTEF ⁶	14.1	4.7	18.8	13.3	7.1	20.5	13.0	8.5	21.4	12.9	6.7	19.6	11.5	6.3	17.8	98.2	104.3	202.5
<i>Contract</i>			21%			19%			16%			19%			25%			38%
<i>Overload</i>			13%			10%			9%			8%			15%			12%
<i>Adjunct</i>			61%			57%			56%			58%			49%			36%
<i>Summer</i>			5%			14%			18%			15%			11%			14%
FTES/FTEF ⁷	8.7	12.1	9.6	9.3	15.4	11.4	8.1	15.8	11.1	8.2	16.1	10.9	9.5	13.8	11.0	13.9	15.1	14.5



Outcomes

	2008-09			2009-10			2010-11			2011-12			2012-13			2012-13		
	F-t-F ³	DE	Total	F-t-F ³	DE	Total	F-t-F ³	DE	Total	F-t-F ³	DE	Total	Subject			Collegewide		
	F-t-F ³	DE	Total	F-t-F ³	DE	Total	F-t-F ³	DE	Total	F-t-F ³	DE	Total	F-t-F ³	DE	Total	F-t-F ³	DE	Total
Retention Rate ⁸	93.9%	80.7%	87.4%	92.8%	80.6%	84.7%	92.7%	77.3%	81.5%	95.2%	81.1%	85.9%	91.9%	82.2%	85.7%	90.1%	78.5%	83.0%
Success Rate ⁸	80.3%	60.8%	70.8%	81.1%	61.6%	68.2%	82.0%	56.3%	63.3%	83.6%	62.6%	69.7%	83.3%	67.6%	73.2%	75.9%	61.0%	66.8%



Health Careers

Degrees - Certificates

													2012-13					
	2008-09			2009-10			2010-11			2011-12			Subject			Collegewide		
	AA	AS	CERT	AA	AS	CERT	AA	AS	CERT	AA	AS	CERT	AA	AS	CERT	AA	AS	CERT
Awards related to or contributed to by Allied Health Careers																		
Emergency Medical Technology	0	0	0	0	0	0	0	0	0	0	0	0	0	0	14			
Nursing LVN	0	1	13	0	5	7	0	5	11	0	17	2	0	9	24			
Human Services	0	0	0	0	6	0	0	5	0	0	8	0	0	6	0			
Human Services Worker	0	0	0	0	0	1	0	0	3	0	0	8	0	0	9			
Total Awards by Type	0	1	13	0	11	8	0	10	14	0	25	10	0	15	47	193	61	121
% of total awards by type	0%	7%	93%	0%	58%	42%	0%	42%	58%	0%	71%	29%	0%	24%	76%	51%	16%	32%
Total Awards	14			19			24			35			62			375		
Child Dvlpmnt Master Teacher	0	0	0	0	0	0	0	0	0	0	0	1	0	0	0			

Notes

- ¹ **Source:** ODS Reports (July, 2013)
- ² **Student Headcount, *Unduplicated*:** Number of students enrolled on census day, where each student is counted one time.
- ³ **F-t-F:** Face to Face instructional delivery mode.
- ⁴ **Enrollment:** Every course in which students are enrolled on census day.
- ⁵ **Students/Section:** Student enrollments per section on census day. Cross-listed sections are not combined.
- ⁶ Acronyms **FTES** and **FTEF** represent full-time equivalent students and full-time equivalent faculty, respectively.
- ⁷ **FTES/FTEF:** A measurement of productivity where the generally accepted target is 17.5.
- ⁸ **Success rate numerator:** Number of course enrollments with a successful passing grade (A,B,C,P/CR).
- Retention rate numerator:** Number of course enrollments retained through the semester (grade = A,B,C,P/CR,D,F,NP/NC,I).
- Success and Retention rate denominator:** Number of enrollments retained (A,B,C,P/CR,D,F,NP/NC,I), withdrawn (W), and dropped after Census Day (DR).