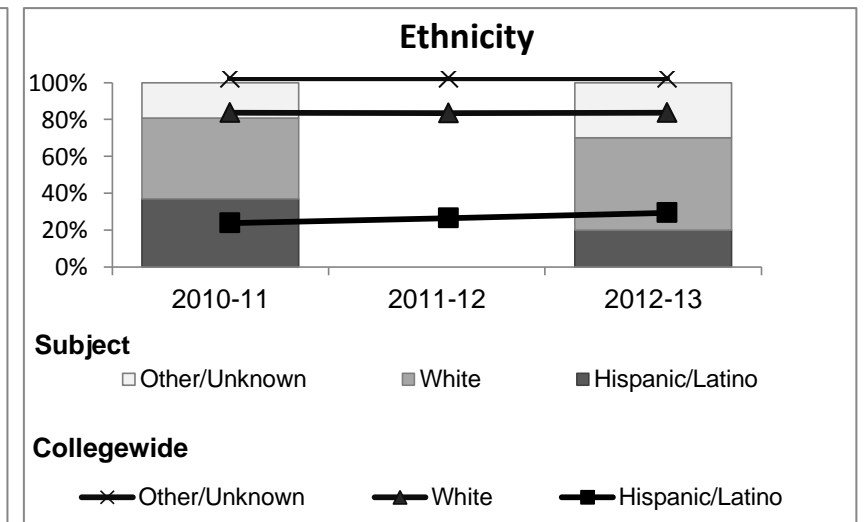
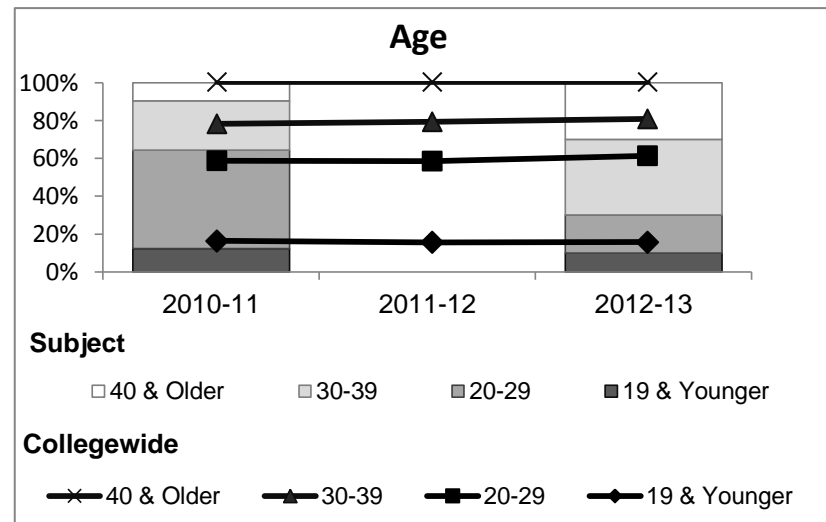


Film

Student Demographic Information

Student Headcount	2008-09		2009-10		2010-11		2011-12		2012-13			
	#	% change - Prior Yr	#	% change - Prior Yr	#	% change - Prior Yr	#	% change - Prior Yr	Subject		Collegewide	
									#	% change - Prior Yr	#	% change - Prior Yr
Unduplicated ²	55	--	61	11%	73	20%		-	10	-	8,583	-16%

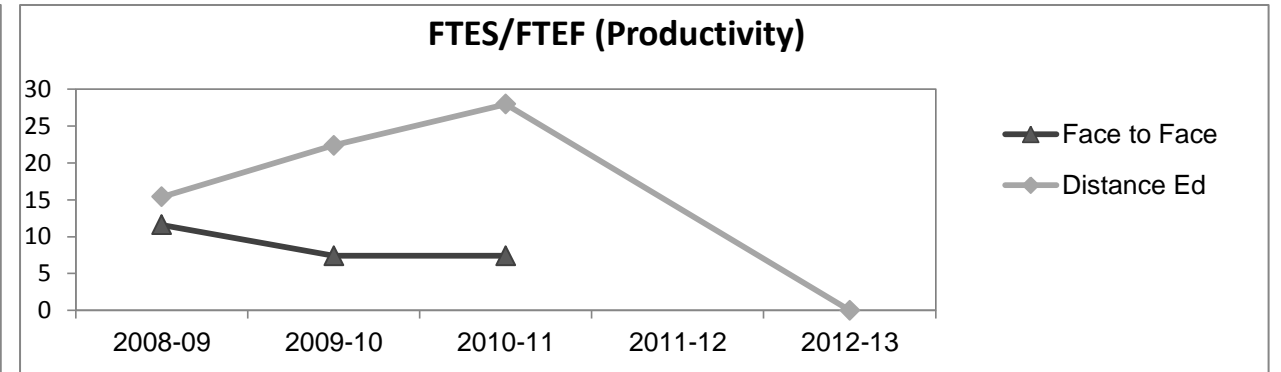
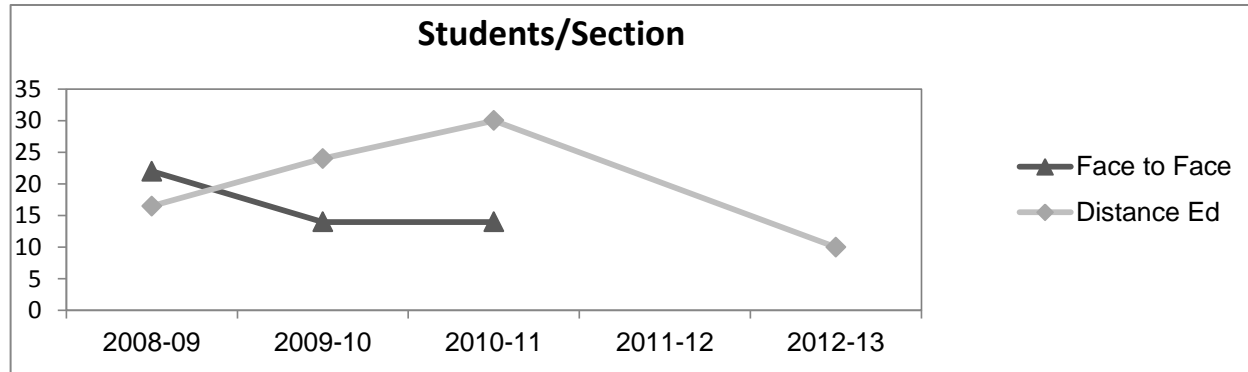
	2008-09		2009-10		2010-11		2011-12		2012-13			
	#	%	#	%	#	%	#	%	Subject		Collegewide	
									#	%	#	%
Gender												
Female	27	49%	32	52%	36	49%			7	70%	5,289	62%
Male	28	51%	29	48%	37	51%			3	30%	3,283	38%
Unknown	0	0%	0	0%	0	0%			0	0%	11	0%
Age												
19 & Younger	10	18%	13	21%	9	12%			1	10%	1,298	15%
20-29	30	55%	25	41%	38	52%			2	20%	3,929	46%
30-39	9	16%	12	20%	19	26%			4	40%	1,671	19%
40 & Older	6	11%	11	18%	7	10%			3	30%	1,685	20%
Ethnicity												
African American	2	4%	5	8%	6	8%			2	20%	502	6%
American Indian	0	0%	1	2%	0	0%			0	0%	177	2%
Asian/Filipino/Pac Islander	0	0%	1	2%	6	8%			0	0%	416	5%
Hispanic/Latino	17	31%	21	34%	27	37%			2	20%	2,554	30%
White	33	60%	27	44%	32	44%			5	50%	4,480	52%
Two or more races	1	2%	5	8%	2	3%			1	10%	413	5%
Unknown	2	4%	1	2%	0	0%			0	0%	41	0%



Film

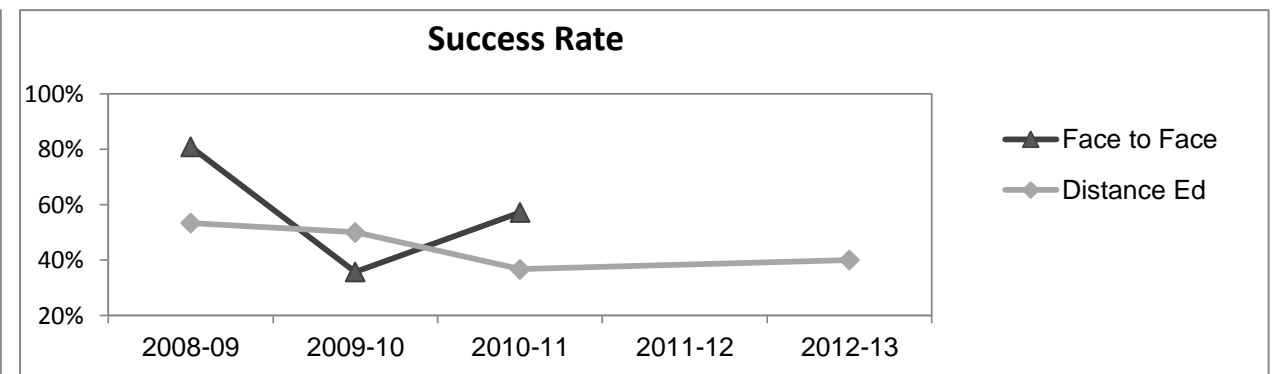
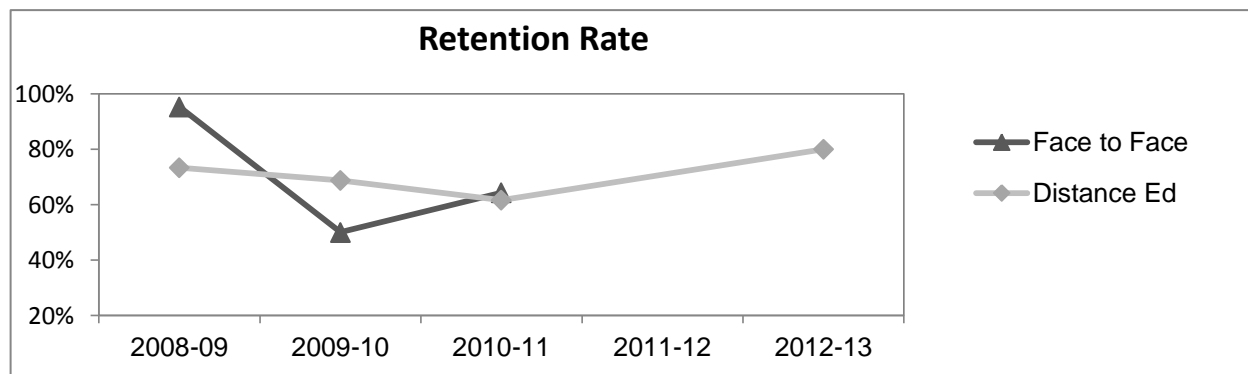
Course Enrollments - Productivity

	2008-09			2009-10			2010-11			2011-12			2012-13			2012-13		
	F-t-F ³	DE	Total	F-t-F ³	DE	Total	F-t-F ³	DE	Total	F-t-F ³	DE	Total	Subject			Collegewide		
	F-t-F ³	DE	Total	F-t-F ³	DE	Total	F-t-F ³	DE	Total	F-t-F ³	DE	Total	F-t-F ³	DE	Total	F-t-F ³	DE	Total
Number of Sections	1	2	3	1	2	3	1	2	3	0	0	0	0	1	1	511	519	1,030
Enrollment ⁴																		
Census	22	33	55	14	48	62	14	60	74	0	0	0	0	10	10	9,387	15,094	24,481
Students/Section ⁵	22	17	18	14	24	21	14	30	25					10	10	18	29	24
Productivity																		
FTES ⁶	2.3	3.1	5.4	1.5	4.5	5.9	1.5	5.6	7.1	0	0	0.0	0	0.9	0.9	1,368.1	1,573.3	2,941.4
FTEF ⁶	0.2	0.2	0.4	0.2	0.2	0.4	0.2	0.2	0.4	0	0	0.0	0	0.0	0.0	98.2	104.3	202.5
<i>Contract</i>			50%			100%			100%									38%
<i>Overload</i>			0%			0%			0%									12%
<i>Adjunct</i>			0%			0%			0%									36%
<i>Summer</i>			50%			0%			0%									14%
FTES/FTEF ⁷	11.6	15.4	13.5	7.4	22.4	14.9	7.4	27.9	17.7					0.0		13.9	15.1	14.5



Outcomes

	2008-09			2009-10			2010-11			2011-12			2012-13			2012-13		
	F-t-F ³	DE	Total	F-t-F ³	DE	Total	F-t-F ³	DE	Total	F-t-F ³	DE	Total	Subject			Collegewide		
	F-t-F ³	DE	Total	F-t-F ³	DE	Total	F-t-F ³	DE	Total	F-t-F ³	DE	Total	F-t-F ³	DE	Total	F-t-F ³	DE	Total
Retention Rate ⁸	95.2%	73.3%	82.4%	50.0%	68.8%	64.5%	64.3%	61.7%	62.2%					80.0%	80.0%	90.1%	78.5%	83.0%
Success Rate ⁸	81.0%	53.3%	64.7%	35.7%	50.0%	46.8%	57.1%	36.7%	40.5%					40.0%	40.0%	75.9%	61.0%	66.8%



Film

Degrees - Certificates

													2012-13					
	2008-09			2009-10			2010-11			2011-12			Subject			Collegewide		
	AA	AS	CERT	AA	AS	CERT	AA	AS	CERT	AA	AS	CERT	AA	AS	CERT	AA	AS	CERT
Awards related to or contributed to by Visual & Performing Arts																		
Art	0	0	0	2	0	0	3	0	0	0	0	0	0	0	0			
Theatre Arts	0	0	0	0	0	0	1	0	0	0	0	0	0	0	0			
Fine Arts	0	0	0	1	0	0	4	0	0	2	0	0	0	0	0			
Total Awards by Type	0	0	0	3	0	0	8	0	0	2	0	0	0	0	0	193	61	121
% of total awards by type				100%	0%	0%	100%	0%	0%	100%	0%	0%				51%	16%	32%
Total Awards	0			3			8			2			0			375		
Liberal Arts/Arts & Humanities	3	0	0	13	0	0	33	0	0	37	0	0	42	0	0			
Web Design	0	7	2	0	4	1	0	1	1	0	2	3	0	2	3			
Digital Animation	0	6	0	0	2	0	0	0	0	0	0	1	0	0	0			
Digital Media	0	0	0	0	0	0	0	0	0	0	0	0	0	0	3			

Notes

¹ **Source:** ODS Reports (July, 2013)

² **Student Headcount, *Unduplicated*:** Number of students enrolled on census day, where each student is counted one time.

³ **F-t-F:** Face to Face instructional delivery mode.

⁴ **Enrollment:** Every course in which students are enrolled on census day.

⁵ **Students/Section:** Student enrollments per section on census day. Cross-listed sections are not combined.

⁶ Acronyms **FTES** and **FTEF** represent full-time equivalent students and full-time equivalent faculty, respectively.

⁷ **FTES/FTEF:** A measurement of productivity where the generally accepted target is 17.5.

⁸ **Success rate numerator:** Number of course enrollments with a successful passing grade (A,B,C,P/CR).

Retention rate numerator: Number of course enrollments retained through the semester (grade = A,B,C,P/CR,D,F,NP/NC,I).

Success and Retention rate denominator: Number of enrollments retained (A,B,C,P/CR,D,F,NP/NC,I), withdrawn (W), and dropped after Census Day (DR).