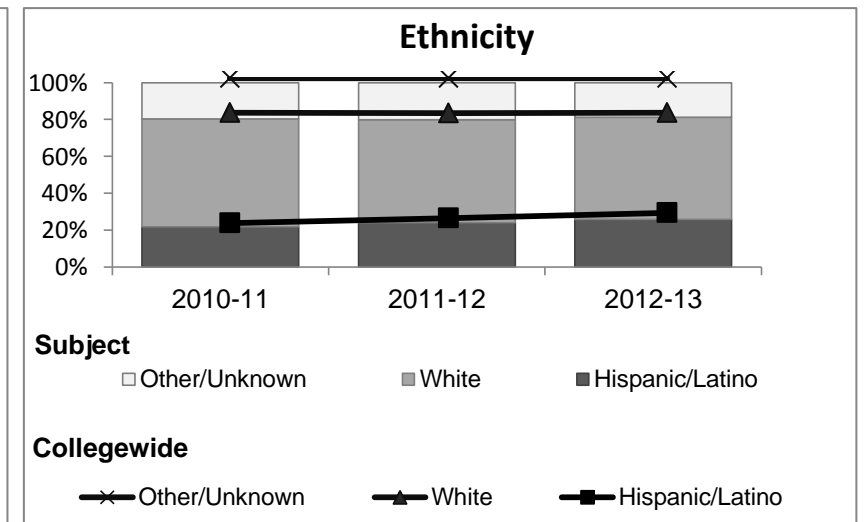
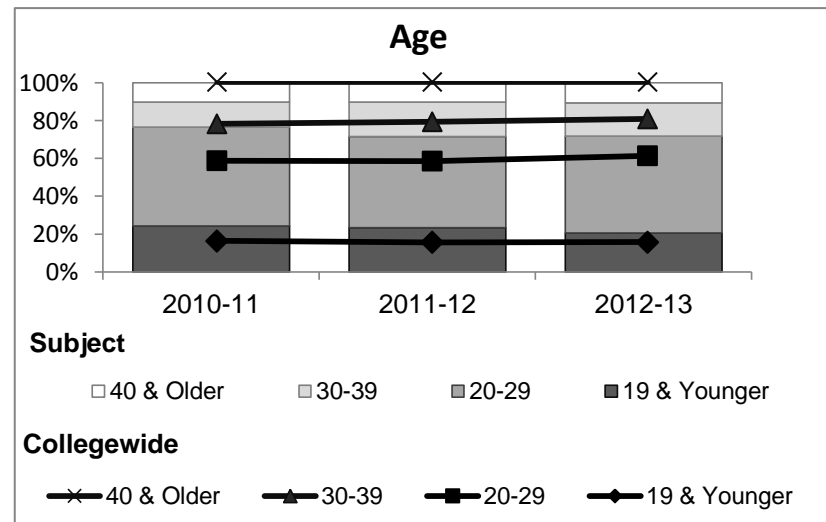
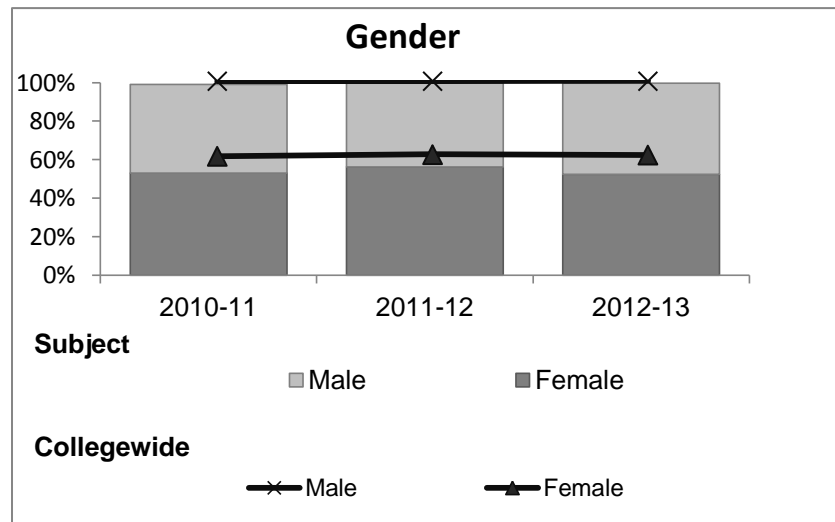


Economics

Student Demographic Information

Student Headcount	2008-09		2009-10		2010-11		2011-12		2012-13		2012-13	
	#	% change - Prior Yr	#	% change - Prior Yr	#	% change - Prior Yr	#	% change - Prior Yr	Subject		Collegewide	
									#	% change - Prior Yr	#	% change - Prior Yr
Unduplicated ²	346	--	592	71%	582	-2%	561	-4%	399	-29%	8,583	-16%

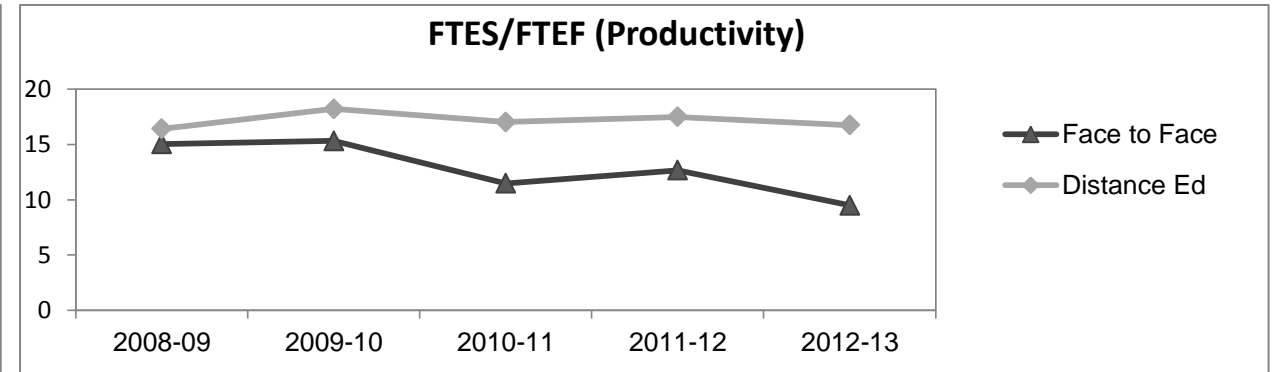
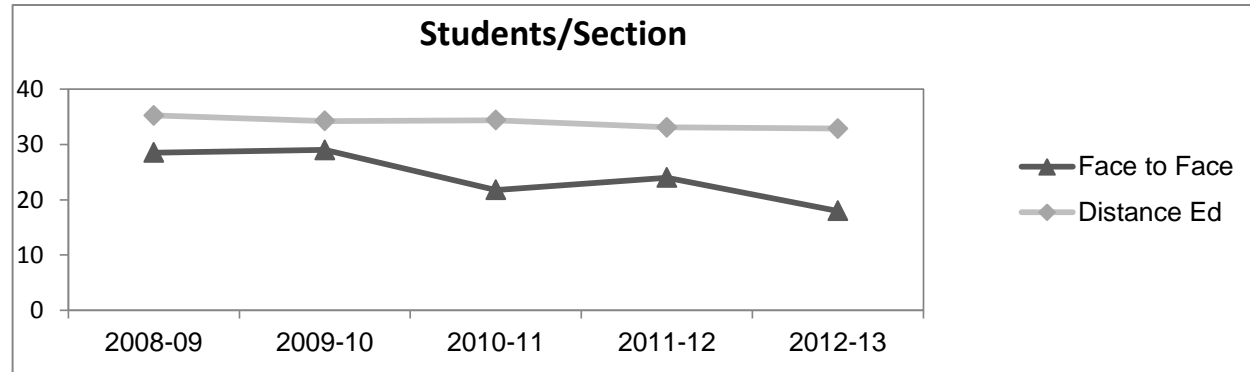
	2008-09		2009-10		2010-11		2011-12		2012-13		2012-13	
	#	%	#	%	#	%	#	%	Subject		Collegewide	
									#	%	#	%
Gender												
Female	169	49%	327	55%	309	53%	316	56%	209	52%	5,289	62%
Male	177	51%	260	44%	268	46%	244	43%	189	47%	3,283	38%
Unknown	0	0%	5	1%	5	1%	1	0%	1	0%	11	0%
Age												
19 & Younger	96	28%	171	29%	141	24%	131	23%	82	21%	1,298	15%
20-29	159	46%	282	48%	304	52%	270	48%	204	51%	3,929	46%
30-39	50	14%	82	14%	77	13%	102	18%	70	18%	1,671	19%
40 & Older	41	12%	57	10%	60	10%	58	10%	43	11%	1,685	20%
Ethnicity												
African American	18	5%	38	6%	49	8%	42	7%	15	4%	502	6%
American Indian	5	1%	6	1%	9	2%	8	1%	7	2%	177	2%
Asian/Filipino/Pac Islander	30	9%	39	7%	30	5%	24	4%	28	7%	416	5%
Hispanic/Latino	64	18%	108	18%	127	22%	135	24%	103	26%	2,554	30%
White	210	61%	362	61%	340	58%	313	56%	221	55%	4,480	52%
Two or more races	9	3%	28	5%	24	4%	38	7%	25	6%	413	5%
Unknown	10	3%	11	2%	3	1%	1	0%	0	0%	41	0%



Economics

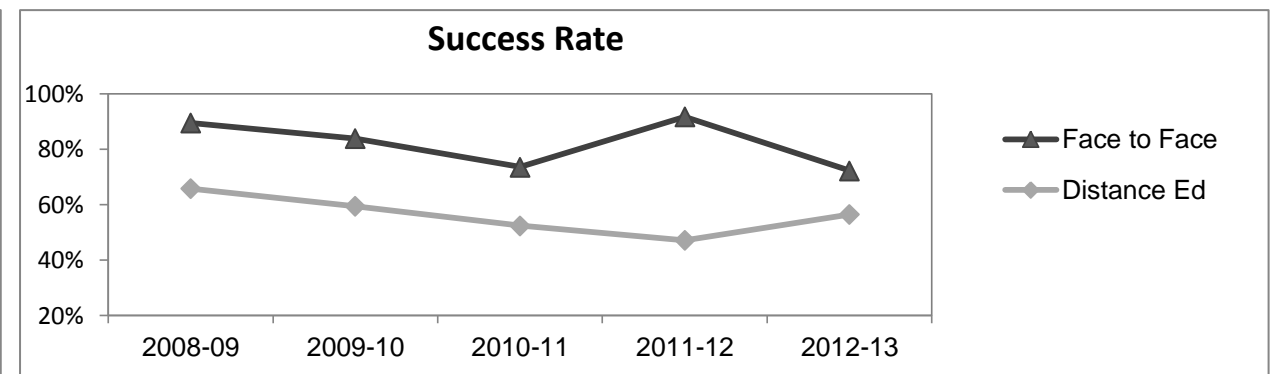
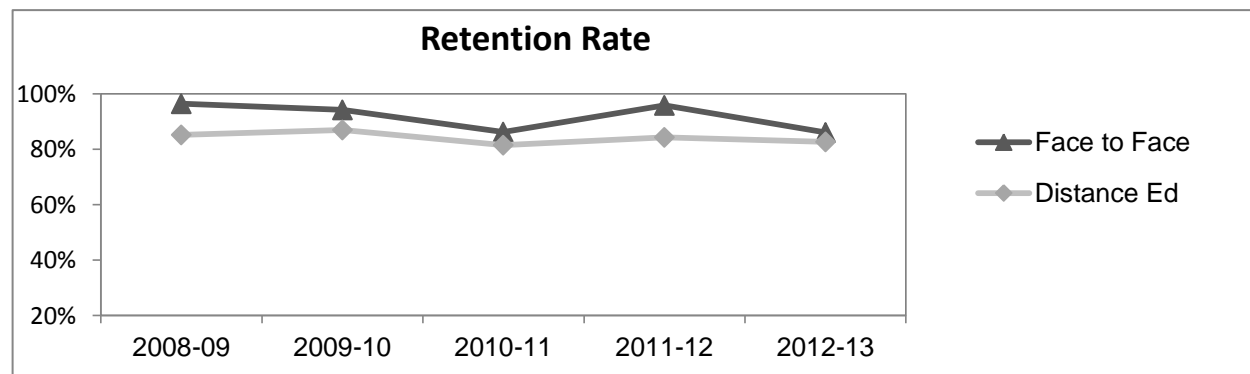
Course Enrollments - Productivity

	2008-09			2009-10			2010-11			2011-12			2012-13			2012-13		
	F-t-F ³	DE	Total	F-t-F ³	DE	Total	F-t-F ³	DE	Total	F-t-F ³	DE	Total	Subject			Collegewide		
	F-t-F ³	DE	Total	F-t-F ³	DE	Total	F-t-F ³	DE	Total	F-t-F ³	DE	Total	F-t-F ³	DE	Total	F-t-F ³	DE	Total
Number of Sections	2	10	12	3	18	21	4	17	21	2	18	20	2	13	15	511	519	1,030
Enrollment ⁴																		
Census	57	352	409	87	616	703	87	584	671	48	595	643	36	427	463	9,387	15,094	24,481
Students/Section ⁵	29	35	34	29	34	33	22	34	32	24	33	32	18	33	31	18	29	24
Productivity																		
FTES ⁶	6.0	32.8	38.8	9.2	58.2	67.4	9.2	54.5	63.6	5.1	55.9	61.0	3.8	40.2	44.0	1,368.1	1,573.3	2,941.4
FTEF ⁶	0.4	2.0	2.4	0.6	3.2	3.8	0.8	3.2	4.0	0.4	3.2	3.6	0.4	2.4	2.8	98.2	104.3	202.5
Contract			8%			42%			45%			44%			79%			38%
Overload			17%			16%			20%			22%			0%			12%
Adjunct			50%			26%			10%			11%			0%			36%
Summer			25%			16%			25%			22%			21%			14%
FTES/FTEF ⁷	15.0	16.4	16.2	15.3	18.2	17.7	11.5	17.0	15.9	12.7	17.5	16.9	9.5	16.7	15.7	13.9	15.1	14.5



Outcomes

	2008-09			2009-10			2010-11			2011-12			2012-13			2012-13		
	F-t-F ³	DE	Total	F-t-F ³	DE	Total	F-t-F ³	DE	Total	F-t-F ³	DE	Total	Subject			Collegewide		
	F-t-F ³	DE	Total	F-t-F ³	DE	Total	F-t-F ³	DE	Total	F-t-F ³	DE	Total	F-t-F ³	DE	Total	F-t-F ³	DE	Total
Retention Rate ⁸	96.5%	85.2%	86.8%	94.3%	86.9%	87.8%	86.2%	81.4%	82.1%	95.8%	84.3%	85.1%	86.1%	82.7%	82.9%	90.1%	78.5%	83.0%
Success Rate ⁸	89.5%	65.8%	69.1%	83.9%	59.5%	62.5%	73.6%	52.4%	55.2%	91.7%	47.2%	50.5%	72.2%	56.4%	57.7%	75.9%	61.0%	66.8%



Economics

Degrees - Certificates

													2012-13					
	2008-09			2009-10			2010-11			2011-12			Subject			Collegewide		
	AA	AS	CERT	AA	AS	CERT	AA	AS	CERT	AA	AS	CERT	AA	AS	CERT	AA	AS	CERT
Awards related to or contributed to by Social Science																		
Social Science	30	0	0	21	0	0	13	0	0	1	0	0	3	0	0			
Humanities	3	0	0	3	0	0	3	0	0	0	0	0	0	0	0			
Total Awards by Type	33	0	0	24	0	0	16	0	0	1	0	0	3	0	0	193	61	121
% of total awards by type	100%	0%	0%	100%	0%	0%	100%	0%	0%	100%	0%	0%	100%	0%	0%	51%	16%	32%
Total Awards	33			24			16			1			3			375		
Liberal Arts/Social & Behvrl	28	0	0	24	0	0	79	0	0	58	0	0	62	0	0			
Liberal Arts/Math & Science	3	0	0	14	0	0	21	0	0	23	0	0	44	0	0			
Business Administration	2	9	3	13	7	1	19	7	1	23	3	0	24	1	0			
Liberal Arts/Arts & Humanities	3	0	0	13	0	0	33	0	0	37	0	0	42	0	0			
Human Services	0	0	0	0	6	0	0	5	0	0	8	0	0	6	0			
Human Services Worker	0	0	0	0	0	1	0	0	3	0	0	8	0	0	9			
Administration of Justice	0	7	7	0	12	6	0	17	6	0	2	3	0	6	3			

Notes¹ **Source:** ODS Reports (July, 2013)² **Student Headcount, *Unduplicated*:** Number of students enrolled on census day, where each student is counted one time.³ **F-t-F:** Face to Face instructional delivery mode.⁴ **Enrollment:** Every course in which students are enrolled on census day.⁵ **Students/Section:** Student enrollments per section on census day. Cross-listed sections are not combined.⁶ Acronyms **FTES** and **FTEF** represent full-time equivalent students and full-time equivalent faculty, respectively.⁷ **FTES/FTEF:** A measurement of productivity where the generally accepted target is 17.5.⁸ **Success rate numerator:** Number of course enrollments with a successful passing grade (A,B,C,P/CR).**Retention rate numerator:** Number of course enrollments retained through the semester (grade = A,B,C,P/CR,D,F,NP/NC,I).**Success and Retention rate denominator:** Number of enrollments retained (A,B,C,P/CR,D,F,NP/NC,I), withdrawn (W), and dropped after Census Day (DR).