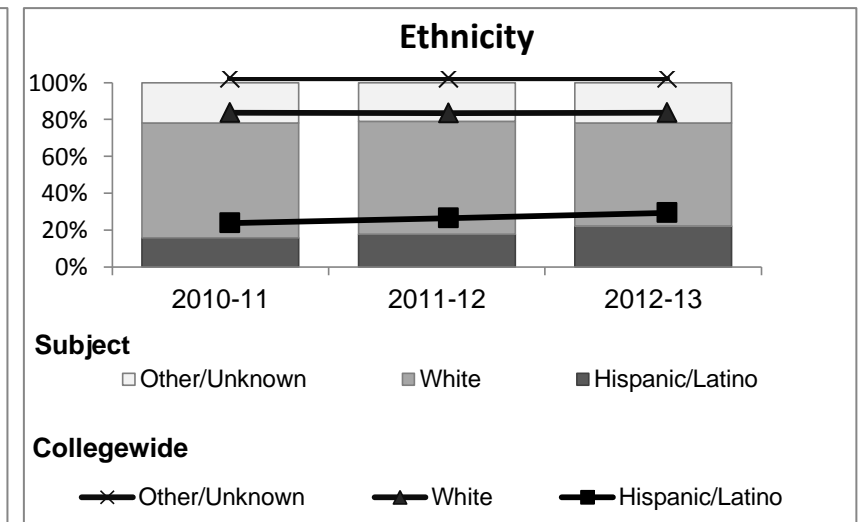
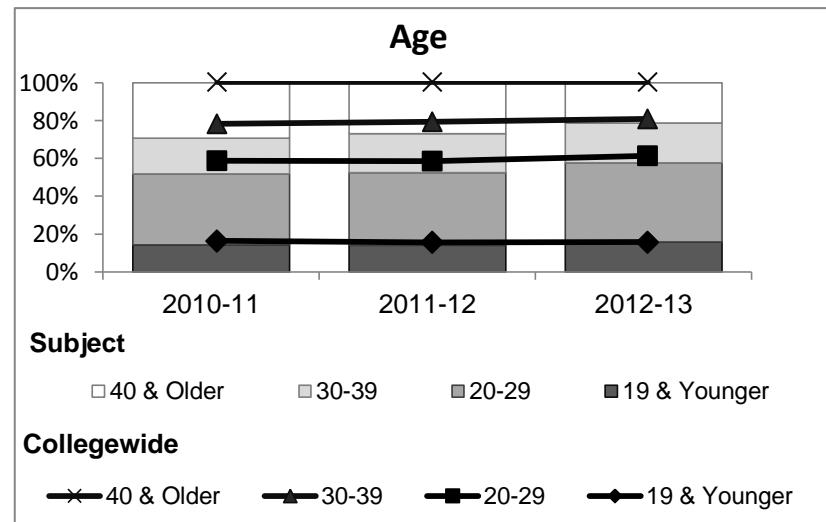
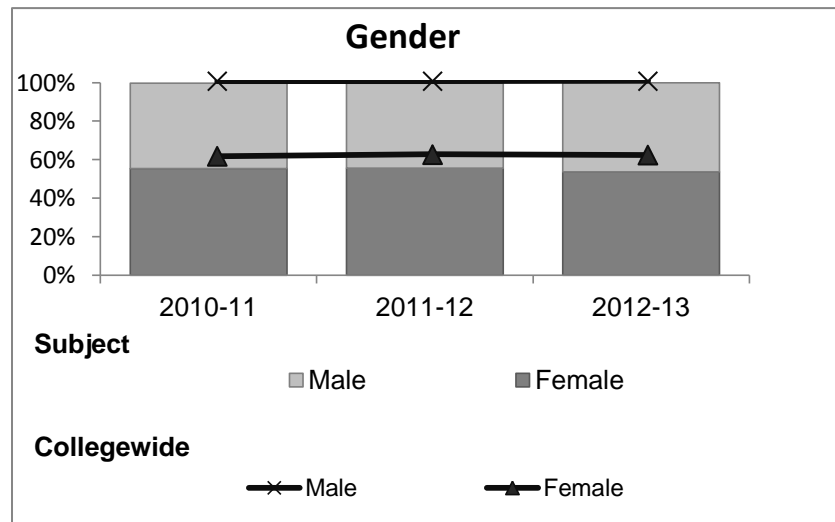


Computer Science

Student Demographic Information

Student Headcount	2008-09		2009-10		2010-11		2011-12		2012-13		2012-13	
	#	% change - Prior Yr	#	% change - Prior Yr	#	% change - Prior Yr	#	% change - Prior Yr	Subject		Collegewide	
									#	% change - Prior Yr	#	% change - Prior Yr
Unduplicated ²	2,204	--	1,335	-39%	1,264	-5%	1,005	-20%	770	-23%	8,583	-16%

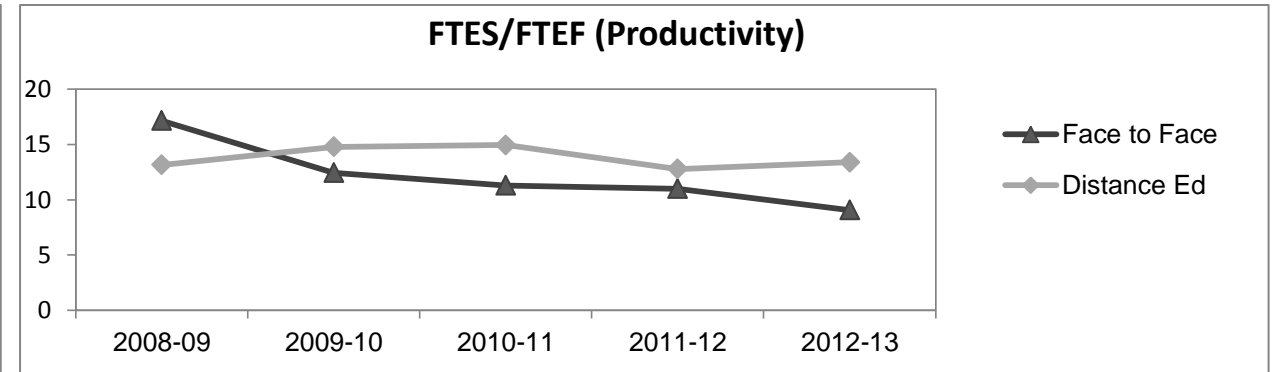
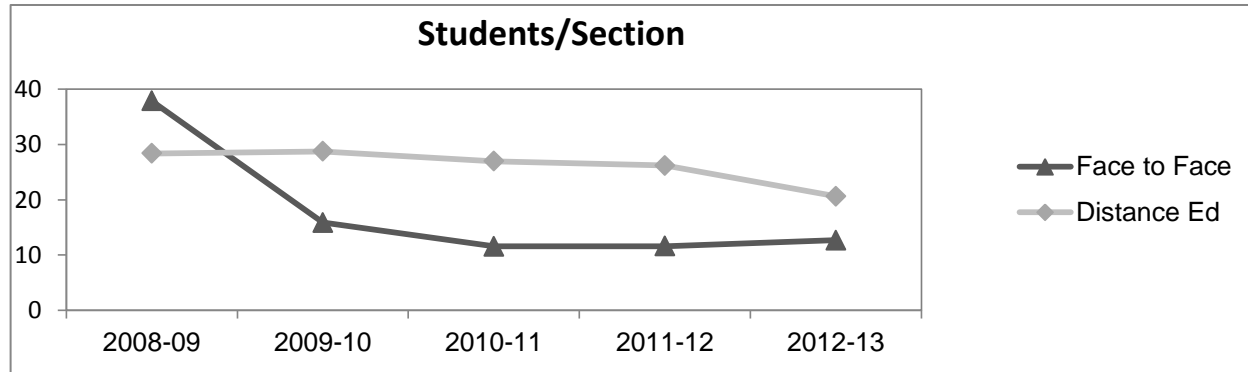
	2008-09		2009-10		2010-11		2011-12		2012-13		2012-13	
	#	%	#	%	#	%	#	%	Subject		Collegewide	
									#	%	#	%
Gender												
Female	1,311	59%	780	58%	700	55%	559	56%	414	54%	5,289	62%
Male	880	40%	550	41%	561	44%	442	44%	355	46%	3,283	38%
Unknown	13	1%	5	0%	3	0%	4	0%	1	0%	11	0%
Age												
19 & Younger	531	24%	201	15%	180	14%	142	14%	121	16%	1,298	15%
20-29	819	37%	499	37%	475	38%	385	38%	322	42%	3,929	46%
30-39	346	16%	233	17%	239	19%	207	21%	163	21%	1,671	19%
40 & Older	507	23%	402	30%	369	29%	271	27%	164	21%	1,685	20%
Ethnicity												
African American	113	5%	67	5%	76	6%	64	6%	40	5%	502	6%
American Indian	97	4%	98	7%	91	7%	60	6%	45	6%	177	2%
Asian/Filipino/Pac Islander	119	5%	61	5%	44	3%	46	5%	36	5%	416	5%
Hispanic/Latino	344	16%	207	16%	201	16%	180	18%	171	22%	2,554	30%
White	1,392	63%	828	62%	786	62%	613	61%	430	56%	4,480	52%
Two or more races	65	3%	51	4%	58	5%	41	4%	46	6%	413	5%
Unknown	74	3%	23	2%	8	1%	1	0%	2	0%	41	0%



Computer Science

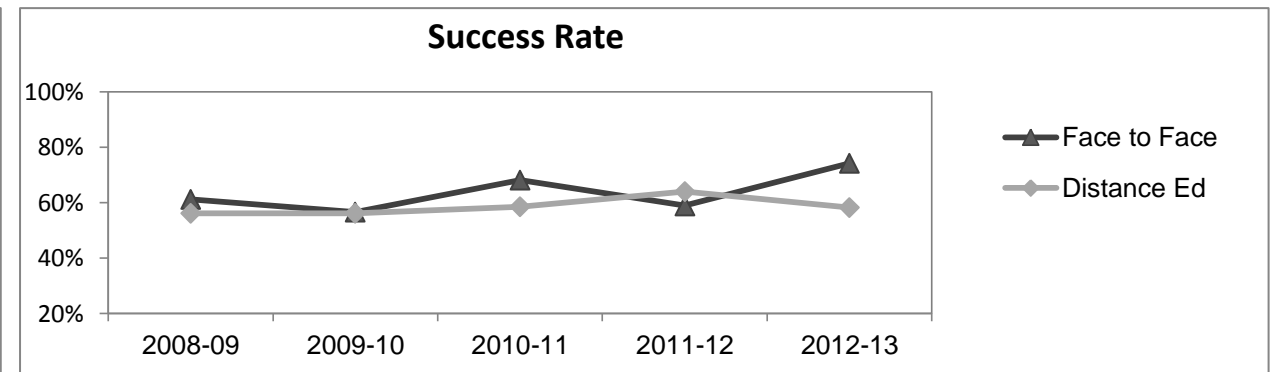
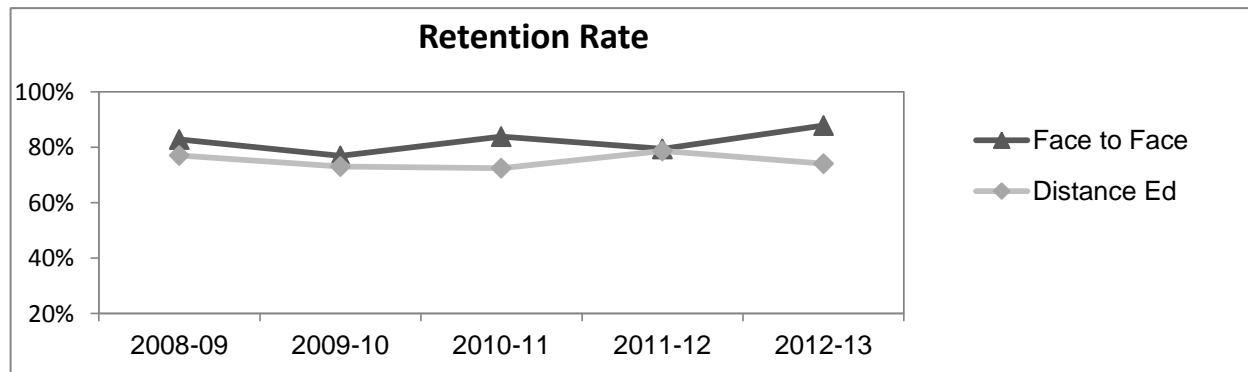
Course Enrollments - Productivity

	2008-09						2009-10			2010-11			2011-12			2012-13		
	Subject			Collegewide														
	F-t-F ³	DE	Total	F-t-F ³	DE	Total	F-t-F ³	DE	Total	F-t-F ³	DE	Total	F-t-F ³	DE	Total	F-t-F ³	DE	Total
Number of Sections	55	47	102	38	55	93	47	59	106	43	44	87	23	43	66	511	519	1,030
Enrollment ⁴																		
Census	2,081	1,333	3,414	603	1,580	2,183	545	1,590	2,135	499	1,152	1,651	292	887	1,179	9,387	15,094	24,481
Students/Section ⁵	38	28	33	16	29	23	12	27	20	12	26	19	13	21	18	18	29	24
Productivity																		
FTES ⁶	107.8	126.8	234.6	48.0	167.1	215.1	43.6	158.7	202.3	46.1	122.1	168.1	27.1	107.8	135.0	1,368.1	1,573.3	2,941.4
FTEF ⁶	6.3	9.6	15.9	3.9	11.3	15.2	3.9	10.6	14.5	4.2	9.6	13.7	3.0	8.1	11.1	98.2	104.3	202.5
<i>Contract</i>																		
<i>Overload</i>																		
<i>Adjunct</i>																		
<i>Summer</i>																		
FTES/FTEF ⁷	17.1	13.1	14.7	12.4	14.8	14.2	11.3	14.9	14.0	11.0	12.8	12.2	9.1	13.4	12.2	13.9	15.1	14.5



Outcomes

	2008-09						2009-10			2010-11			2011-12			2012-13		
	Subject			Collegewide														
	F-t-F ³	DE	Total	F-t-F ³	DE	Total	F-t-F ³	DE	Total	F-t-F ³	DE	Total	F-t-F ³	DE	Total	F-t-F ³	DE	Total
Retention Rate ⁸	82.8%	77.0%	79.2%	76.9%	73.0%	74.1%	83.9%	72.5%	75.4%	79.4%	78.7%	78.9%	87.8%	74.0%	77.4%	90.1%	78.5%	83.0%
Success Rate ⁸	61.2%	56.2%	58.0%	56.6%	56.2%	56.3%	68.1%	58.5%	60.9%	58.9%	64.0%	62.4%	74.2%	58.2%	62.1%	75.9%	61.0%	66.8%



Computer Science

Degrees - Certificates

	2012-13																	
	2008-09			2009-10			2010-11			2011-12			Subject			Collegewide		
	AA	AS	CERT	AA	AS	CERT	AA	AS	CERT	AA	AS	CERT	AA	AS	CERT	AA	AS	CERT
Awards related to or contributed to by CIS & Business & Digital Arts																		
Business	7	1	0	0	2	2	5	6	3	0	7	1	0	4	3			
Business Administration	2	9	3	13	7	1	19	7	1	23	3	0	24	1	0			
Business Management	0	10	3	0	10	2	0	14	1	0	4	2	0	2	0			
Business Office Technology	0	0	0	0	3	0	0	6	1	0	2	0	0	1	5			
Computer Information Systems	0	3	3	0	3	0	0	7	1	0	5	3	0	9	1			
Computer Science	0	0	0	0	0	0	0	0	0	0	0	0	0	1	0			
Digital Animation	0	6	0	0	2	0	0	0	0	0	0	1	0	0	0			
Management	0	0	0	0	0	0	0	0	0	0	1	0	0	1	0			
Office Assistant	0	0	0	0	0	0	0	0	0	0	0	0	0	0	6			
Office Assistant I	0	0	0	0	0	0	0	0	1	0	0	1	0	0	0			
Office Clerk	0	0	0	0	0	0	0	0	0	0	0	0	0	0	6			
Paralegal Studies	0	2	3	0	1	3	0	2	2	0	0	5	0	4	6			
Small Business Mgmt/Entreprene	0	1	0	0	2	0	0	1	1	0	0	0	0	0	0			
Web Design	0	7	2	0	4	1	0	1	1	0	2	3	0	2	3			
Digital Animation	0	6	0	0	2	0	0	0	0	0	0	1	0	0	0			
Digital Media	2	0	0	3	0	0	7	3	0	0	3	0	0	3	0			
Total Awards by Type	11	45	14	16	36	9	31	47	12	23	27	17	24	28	30	193	61	121
% of total awards by type	16%	64%	20%	26%	59%	15%	34%	52%	13%	34%	40%	25%	29%	34%	37%	51%	16%	32%
Total Awards	70			61			90			67			82			375		
Liberal Arts/Math & Science	3	0	0	14	0	0	21	0	0	23	0	0	44	0	0			
Engineering	2	0	0	3	0	0	7	3	0	0	3	0	0	3	0			
Mathematics	0	0	0	0	0	0	0	0	0	2	0	0	0	3	0			
Human Services	0	0	0	0	6	0	0	5	0	0	8	0	0	6	0			
Human Services Worker	0	0	0	0	0	1	0	0	3	0	0	8	0	0	9			

Notes

- ¹ **Source:** ODS Reports (July, 2013)
- ² **Student Headcount, *Unduplicated*:** Number of students enrolled on census day, where each student is counted one time.
- ³ **F-t-F:** Face to Face instructional delivery mode.
- ⁴ **Enrollment:** Every course in which students are enrolled on census day.
- ⁵ **Students/Section:** Student enrollments per section on census day. Cross-listed sections are not combined.
- ⁶ Acronyms **FTES** and **FTEF** represent full-time equivalent students and full-time equivalent faculty, respectively.
- ⁷ **FTES/FTEF:** A measurement of productivity where the generally accepted target is 17.5.
- ⁸ **Success rate numerator:** Number of course enrollments with a successful passing grade (A,B,C,P/CR).
- Retention rate numerator:** Number of course enrollments retained through the semester (grade = A,B,C,P/CR,D,F,NP/NC,I).
- Success and Retention rate denominator:** Number of enrollments retained (A,B,C,P/CR,D,F,NP/NC,I), withdrawn (W), and dropped after Census Day (DR).