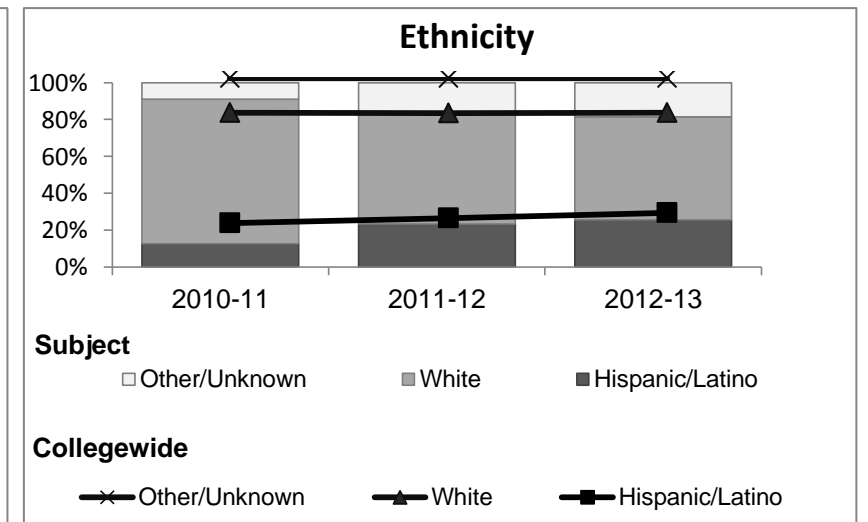
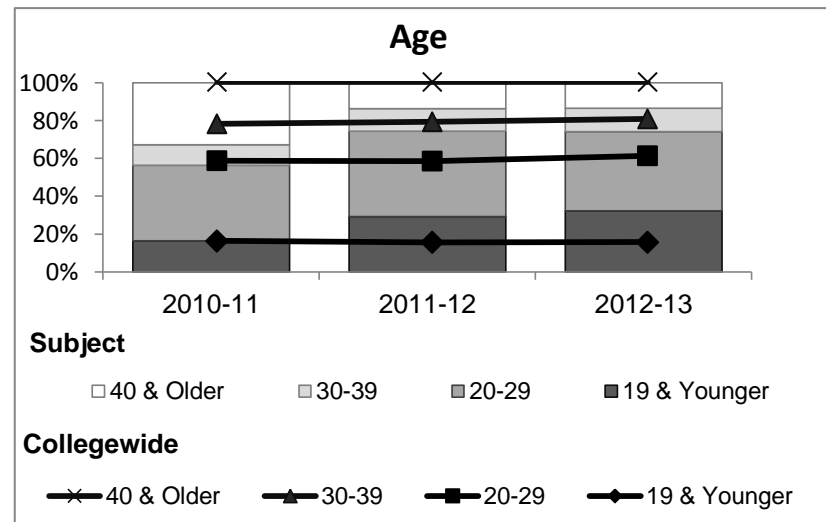
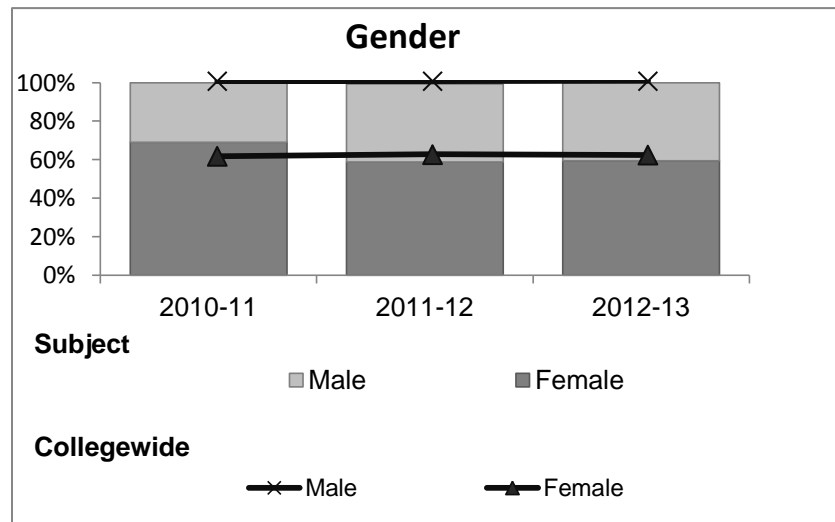


Counseling

Student Demographic Information

Student Headcount	2008-09		2009-10		2010-11		2011-12		2012-13		2012-13	
	#	% change - Prior Yr	#	% change - Prior Yr	#	% change - Prior Yr	#	% change - Prior Yr	Subject		Collegewide	
									#	% change - Prior Yr	#	% change - Prior Yr
Unduplicated ²	169	--	181	7%	55	-70%	304	453%	323	6%	8,583	-16%

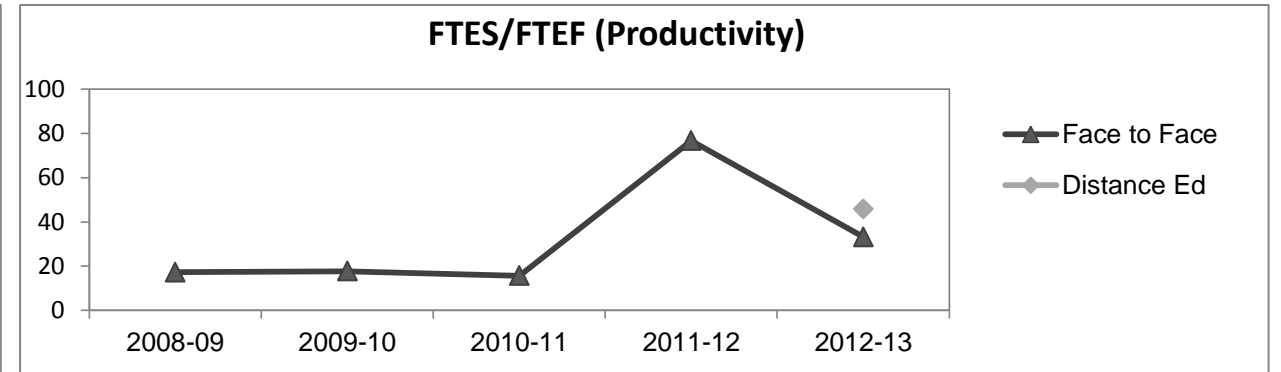
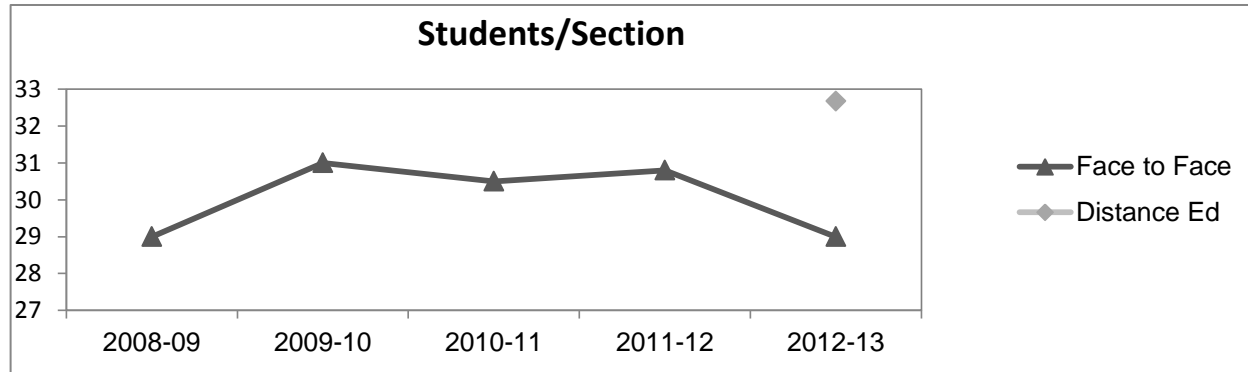
	2008-09		2009-10		2010-11		2011-12		2012-13		2012-13	
	#	%	#	%	#	%	#	%	Subject		Collegewide	
									#	%	#	%
Gender												
Female	110	65%	114	63%	38	69%	179	59%	192	59%	5,289	62%
Male	58	34%	67	37%	17	31%	123	40%	131	41%	3,283	38%
Unknown	1	1%	0	0%	0	0%	2	1%	0	0%	11	0%
Age												
19 & Younger	64	38%	48	27%	9	16%	89	29%	104	32%	1,298	15%
20-29	70	41%	67	37%	22	40%	137	45%	135	42%	3,929	46%
30-39	19	11%	30	17%	6	11%	36	12%	40	12%	1,671	19%
40 & Older	16	9%	36	20%	18	33%	42	14%	44	14%	1,685	20%
Ethnicity												
African American	9	5%	12	7%	0	0%	18	6%	13	4%	502	6%
American Indian	4	2%	4	2%	1	2%	7	2%	7	2%	177	2%
Asian/Filipino/Pac Islander	5	3%	5	3%	1	2%	9	3%	7	2%	416	5%
Hispanic/Latino	33	20%	27	15%	7	13%	71	23%	83	26%	2,554	30%
White	104	62%	124	69%	43	78%	184	61%	180	56%	4,480	52%
Two or more races	8	5%	5	3%	2	4%	15	5%	31	10%	413	5%
Unknown	6	4%	4	2%	1	2%	0	0%	2	1%	41	0%



Counseling

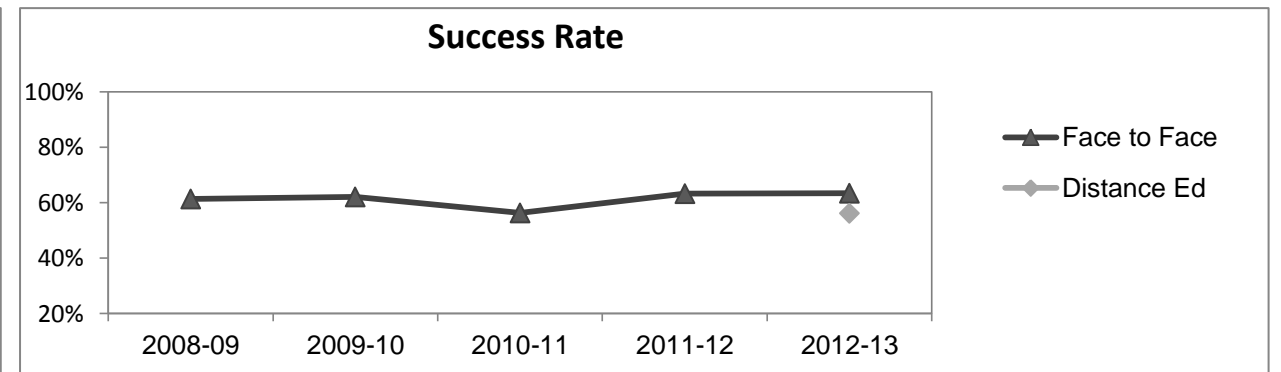
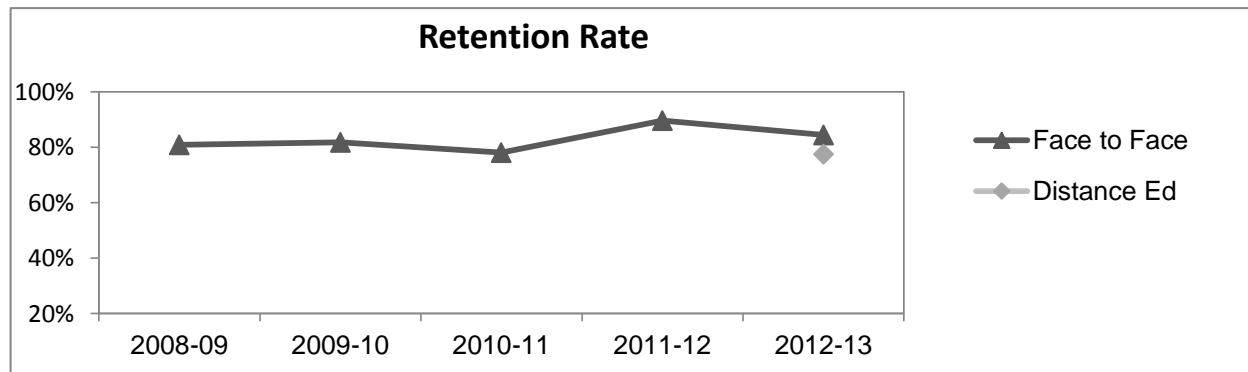
Course Enrollments - Productivity

	2008-09			2009-10			2010-11			2011-12			2012-13			2012-13		
	F-t-F ³	DE	Total	F-t-F ³	DE	Total	F-t-F ³	DE	Total	F-t-F ³	DE	Total	Subject			Collegewide		
	F-t-F ³	DE	Total	F-t-F ³	DE	Total	F-t-F ³	DE	Total	F-t-F ³	DE	Total	F-t-F ³	DE	Total	F-t-F ³	DE	Total
Number of Sections	6	0	6	6	0	6	2	0	2	10	0	10	8	3	11	511	519	1,030
Enrollment ⁴																		
Census	174	0	174	186	0	186	61	0	61	308	0	308	232	98	330	9,387	15,094	24,481
Students/Section ⁵	29		29	31		31	31		31	31		31	29	33	30	18	29	24
Productivity																		
FTES ⁶	13.7	0	13.7	14.2	0	14.2	4.2	0	4.2	24.9	0	24.9	17.6	6.1	23.7	1,368.1	1,573.3	2,941.4
FTEF ⁶	0.8	0	0.8	0.8	0	0.8	0.3	0	0.3	0.3	0	0.3	0.5	0.1	0.7	98.2	104.3	202.5
<i>Contract</i>			17%			33%			0%			18%			0%			38%
<i>Overload</i>			83%			33%			50%			0%			40%			12%
<i>Adjunct</i>			0%			0%			0%			82%			40%			36%
<i>Summer</i>			0%			33%			50%			0%			20%			14%
FTES/FTEF ⁷	17.2		17.2	17.7		17.7	15.7		15.7	76.6		76.6	33.2	45.8	35.7	13.9	15.1	14.5



Outcomes

	2008-09			2009-10			2010-11			2011-12			2012-13			2012-13		
	F-t-F ³	DE	Total	F-t-F ³	DE	Total	F-t-F ³	DE	Total	F-t-F ³	DE	Total	Subject			Collegewide		
	F-t-F ³	DE	Total	F-t-F ³	DE	Total	F-t-F ³	DE	Total	F-t-F ³	DE	Total	F-t-F ³	DE	Total	F-t-F ³	DE	Total
Retention Rate ⁸	80.9%		80.9%	81.8%		81.8%	78.1%		78.1%	89.6%		89.6%	84.5%	77.6%	82.4%	90.1%	78.5%	83.0%
Success Rate ⁸	61.3%		61.3%	62.0%		62.0%	56.3%		56.3%	63.3%		63.3%	63.4%	56.1%	61.2%	75.9%	61.0%	66.8%



Counseling

Degrees - Certificates

										2012-13								
	2008-09			2009-10			2010-11			2011-12			Subject			Collegewide		
	AA	AS	CERT	AA	AS	CERT	AA	AS	CERT	AA	AS	CERT	AA	AS	CERT	AA	AS	CERT
* There are no awards associated with this Department or Subject																		
Total Awards by Type	0	0	0	0	0	0	0	0	0	0	0	0	0	0	0	193	61	121
% of total awards by type																51%	16%	32%
Total Awards	0			0			0			0			0			375		

Notes

- ¹ **Source:** ODS Reports (July, 2013)
- ² **Student Headcount, *Unduplicated*:** Number of students enrolled on census day, where each student is counted one time.
- ³ **F-t-F:** Face to Face instructional delivery mode.
- ⁴ **Enrollment:** Every course in which students are enrolled on census day.
- ⁵ **Students/Section:** Student enrollments per section on census day. Cross-listed sections are not combined.
- ⁶ Acronyms **FTES** and **FTEF** represent full-time equivalent students and full-time equivalent faculty, respectively.
- ⁷ **FTES/FTEF:** A measurement of productivity where the generally accepted target is 17.5.
- ⁸ **Success rate numerator:** Number of course enrollments with a successful passing grade (A,B,C,P/CR).
- Retention rate numerator:** Number of course enrollments retained through the semester (grade = A,B,C,P/CR,D,F,NP/NC,I).
- Success and Retention rate denominator:** Number of enrollments retained (A,B,C,P/CR,D,F,NP/NC,I), withdrawn (W), and dropped after Census Day (DR).