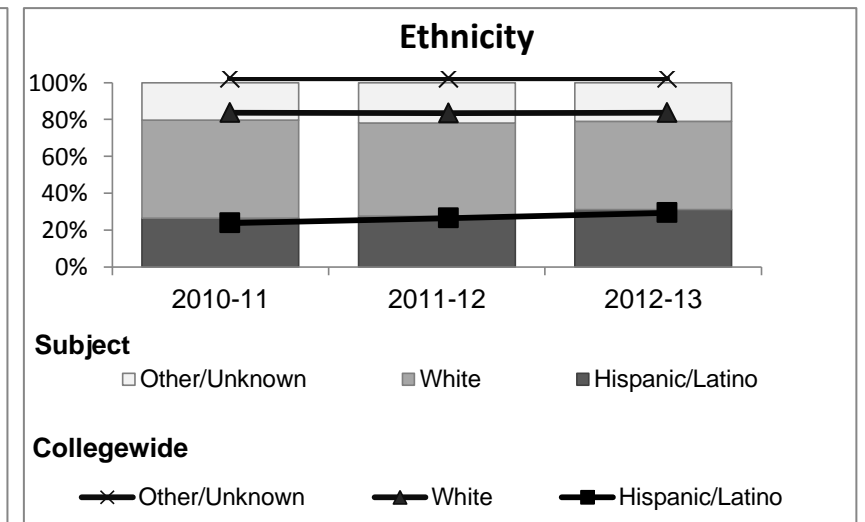
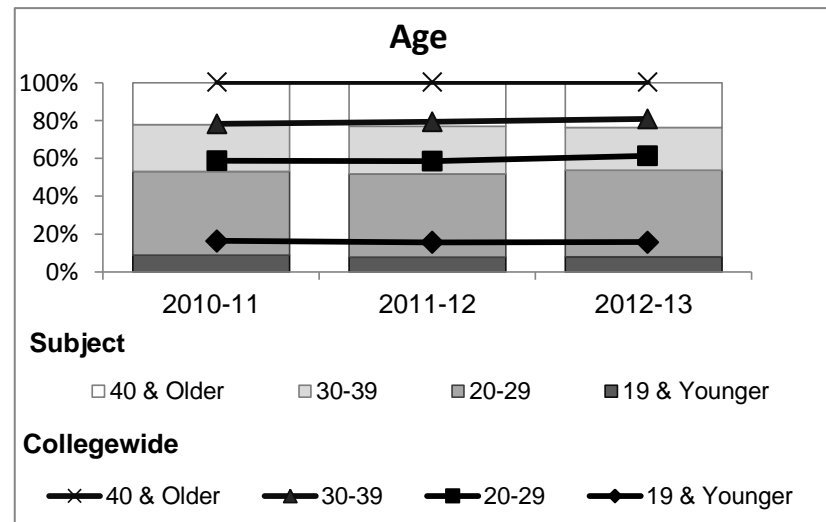
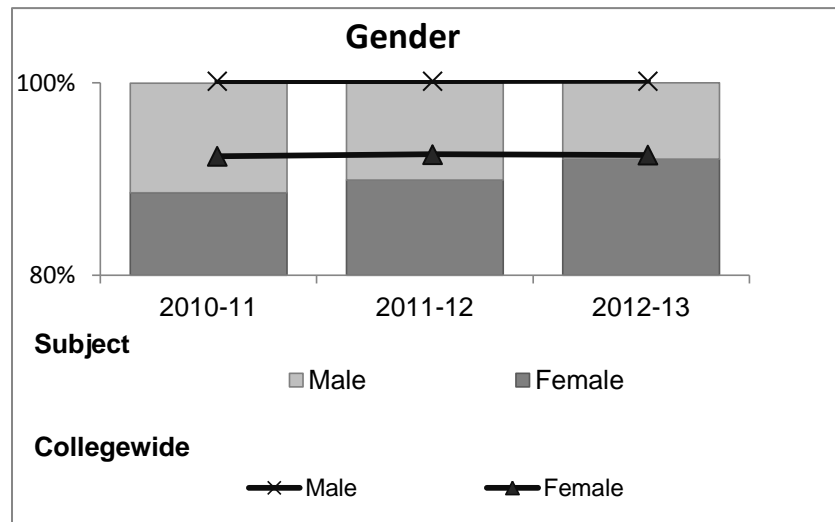


Child Development

Student Demographic Information

Student Headcount	2008-09		2009-10		2010-11		2011-12		2012-13		2012-13	
	#	% change - Prior Yr	#	% change - Prior Yr	#	% change - Prior Yr	#	% change - Prior Yr	Subject		Collegewide	
									#	% change - Prior Yr	#	% change - Prior Yr
Unduplicated ²	1,324	--	1,432	8%	1,766	23%	1,643	-7%	1,401	-15%	8,583	-16%

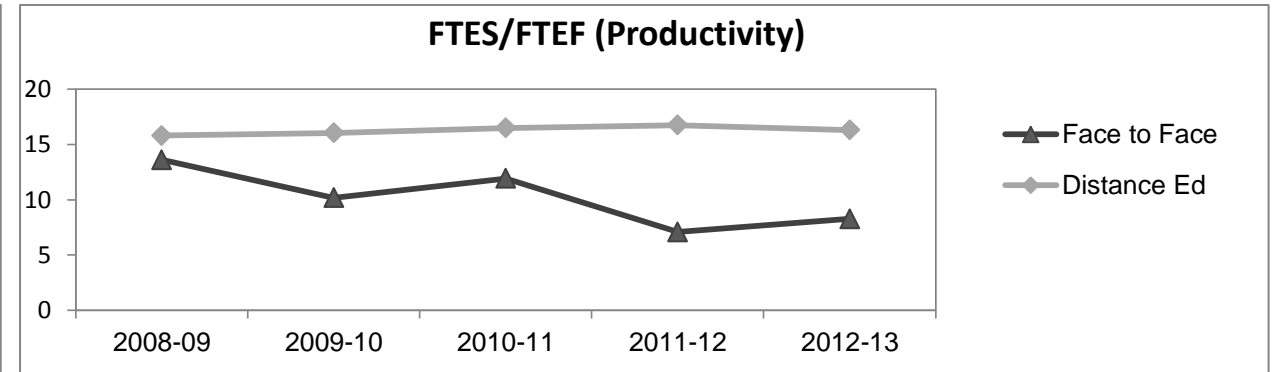
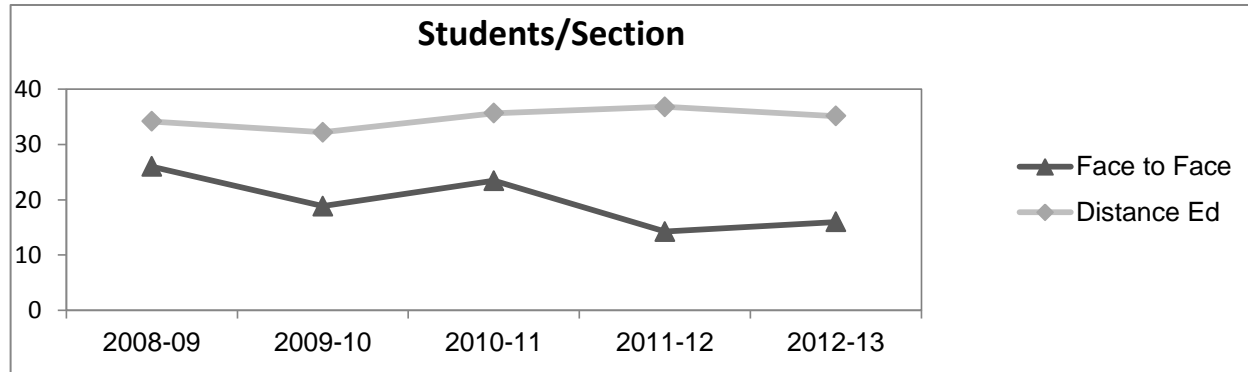
	2008-09		2009-10		2010-11		2011-12		2012-13		2012-13	
	#	%	#	%	#	%	#	%	Subject		Collegewide	
									#	%	#	%
Gender												
Female	1,216	92%	1,308	91%	1,564	89%	1,477	90%	1,290	92%	5,289	62%
Male	106	8%	123	9%	201	11%	166	10%	111	8%	3,283	38%
Unknown	2	0%	1	0%	1	0%	0	0%	0	0%	11	0%
Age												
19 & Younger	123	9%	131	9%	156	9%	127	8%	111	8%	1,298	15%
20-29	551	42%	648	45%	783	44%	723	44%	641	46%	3,929	46%
30-39	350	26%	331	23%	434	25%	415	25%	317	23%	1,671	19%
40 & Older	300	23%	322	22%	393	22%	378	23%	332	24%	1,685	20%
Ethnicity												
African American	97	7%	111	8%	178	10%	184	11%	131	9%	502	6%
American Indian	39	3%	55	4%	26	1%	27	2%	21	1%	177	2%
Asian/Filipino/Pac Islander	77	6%	86	6%	92	5%	73	4%	80	6%	416	5%
Hispanic/Latino	277	21%	315	22%	466	26%	452	28%	438	31%	2,554	30%
White	775	59%	815	57%	939	53%	832	51%	667	48%	4,480	52%
Two or more races	23	2%	30	2%	59	3%	68	4%	60	4%	413	5%
Unknown	36	3%	20	1%	6	0%	7	0%	4	0%	41	0%



Child Development

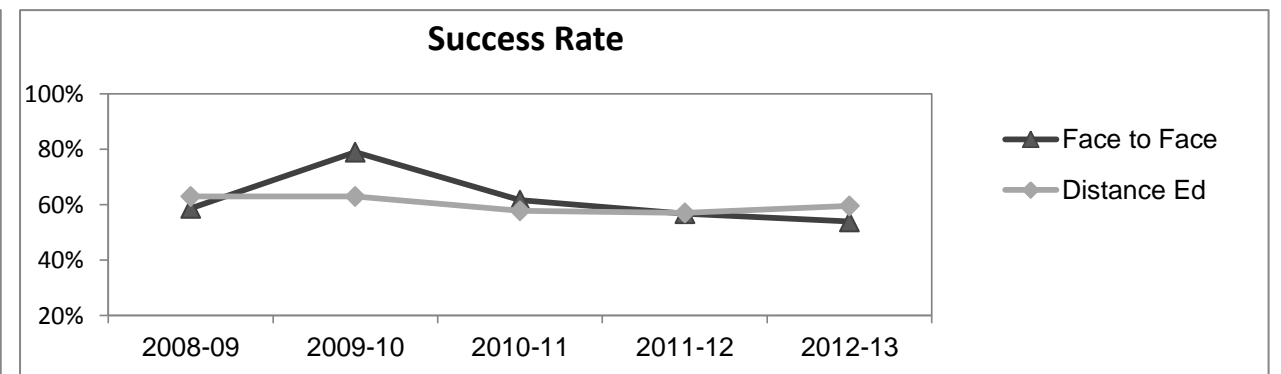
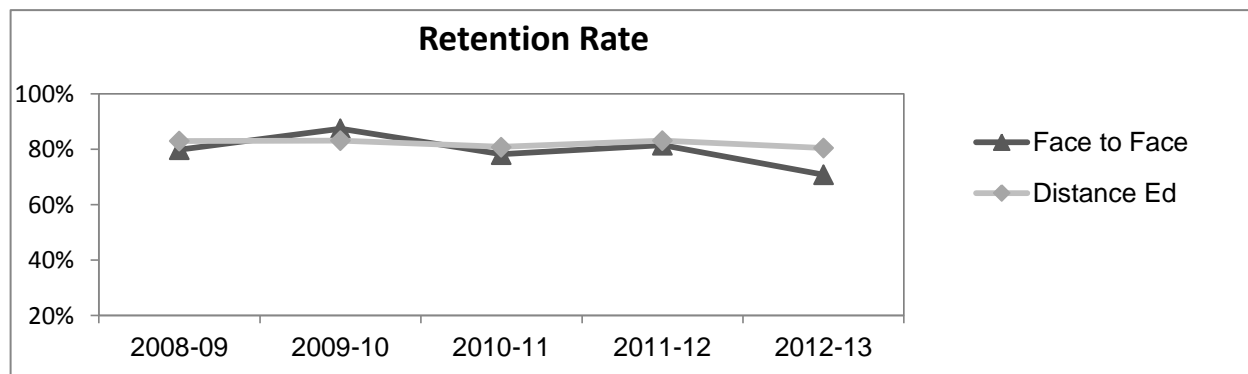
Course Enrollments - Productivity

	2008-09						2009-10			2010-11			2011-12			2012-13		
	F-t-F ³	DE	Total	F-t-F ³	DE	Total	F-t-F ³	DE	Total	F-t-F ³	DE	Total	F-t-F ³	DE	Total	F-t-F ³	DE	Total
Number of Sections	19	50	69	6	74	80	7	87	94	8	80	88	4	73	77	511	519	1,030
Enrollment ⁴																		
Census	494	1,707	2,201	113	2,382	2,495	164	3,099	3,263	114	2,942	3,056	64	2,562	2,626	9,387	15,094	24,481
Students/Section ⁵	26	34	32	19	32	31	23	36	35	14	37	35	16	35	34	18	29	24
Productivity																		
FTES ⁶	42.3	162.2	204.5	7.2	224.5	231.7	12.8	291.0	303.8	10.2	275.6	285.8	6.6	240.0	246.6	1,368.1	1,573.3	2,941.4
FTEF ⁶	3.1	10.3	13.4	0.7	14.0	14.7	1.1	17.7	18.7	1.4	16.5	17.9	0.8	14.7	15.5	98.2	104.3	202.5
<i>Contract</i>			18%			17%			15%			22%			20%			38%
<i>Overload</i>			8%			0%			6%			9%			0%			12%
<i>Adjunct</i>			53%			52%			45%			39%			53%			36%
<i>Summer</i>			21%			30%			34%			29%			27%			14%
FTES/FTEF ⁷	13.6	15.8	15.3	10.2	16.0	15.8	11.9	16.5	16.2	7.1	16.7	16.0	8.3	16.3	15.9	13.9	15.1	14.5



Outcomes

	2008-09						2009-10			2010-11			2011-12			2012-13		
	F-t-F ³	DE	Total	F-t-F ³	DE	Total	F-t-F ³	DE	Total	F-t-F ³	DE	Total	F-t-F ³	DE	Total	F-t-F ³	DE	Total
Retention Rate ⁸	79.8%	83.0%	82.3%	87.4%	83.1%	83.3%	78.1%	80.8%	80.7%	81.4%	83.2%	83.1%	70.8%	80.5%	80.2%	90.1%	78.5%	83.0%
Success Rate ⁸	58.7%	62.9%	61.9%	78.9%	63.0%	63.6%	61.6%	57.8%	58.0%	56.7%	57.0%	57.0%	53.8%	59.6%	59.4%	75.9%	61.0%	66.8%



Child Development

Degrees - Certificates

													2012-13					
	2008-09			2009-10			2010-11			2011-12			Subject			Collegewide		
	AA	AS	CERT	AA	AS	CERT	AA	AS	CERT	AA	AS	CERT	AA	AS	CERT	AA	AS	CERT
Awards related to or contributed to by Child Development																		
Child Dev Assistant Teacher	0	0	0	0	0	0	0	0	0	0	0	1	0	0	2			
Child Dev Associate Teacher	0	0	0	0	0	0	0	0	0	0	0	2	0	0	0			
Child Development	0	5	1	0	14	0	0	13	4	4	3	1	8	0	0			
Child Development Teacher	0	0	0	0	0	0	0	0	0	0	0	3	0	0	2			
Child Dvlpmnt Master Teacher	0	0	0	0	0	0	0	0	0	0	0	1	0	0	0			
Child Dvlpmnt Site Supervisor	0	0	0	0	0	0	0	0	0	0	0	1	0	0	0			
General Education	71	0	0	48	0	0	19	0	0	6	0	0	4	0	0			
Total Awards by Type	71	5	1	48	14	0	19	13	4	10	3	9	12	0	4	193	61	121
% of total awards by type	92%	6%	1%	77%	23%	0%	53%	36%	11%	45%	14%	41%	75%	0%	25%	51%	16%	32%
Total Awards	77			62			36			22			16			375		
Human Services	0	0	0	0	6	0	0	5	0	0	8	0	0	6	0			
Human Services Worker	0	0	0	0	0	1	0	0	3	0	0	8	0	0	9			
Liberal Arts/Social & Behvrl	28	0	0	24	0	0	79	0	0	58	0	0	62	0	0			

Notes

- ¹ **Source:** ODS Reports (July, 2013)
- ² **Student Headcount, *Unduplicated*:** Number of students enrolled on census day, where each student is counted one time.
- ³ **F-t-F:** Face to Face instructional delivery mode.
- ⁴ **Enrollment:** Every course in which students are enrolled on census day.
- ⁵ **Students/Section:** Student enrollments per section on census day. Cross-listed sections are not combined.
- ⁶ Acronyms **FTES** and **FTEF** represent full-time equivalent students and full-time equivalent faculty, respectively.
- ⁷ **FTES/FTEF:** A measurement of productivity where the generally accepted target is 17.5.
- ⁸ **Success rate numerator:** Number of course enrollments with a successful passing grade (A,B,C,P/CR).
- Retention rate numerator:** Number of course enrollments retained through the semester (grade = A,B,C,P/CR,D,F,NP/NC,I).
- Success and Retention rate denominator:** Number of enrollments retained (A,B,C,P/CR,D,F,NP/NC,I), withdrawn (W), and dropped after Census Day (DR).