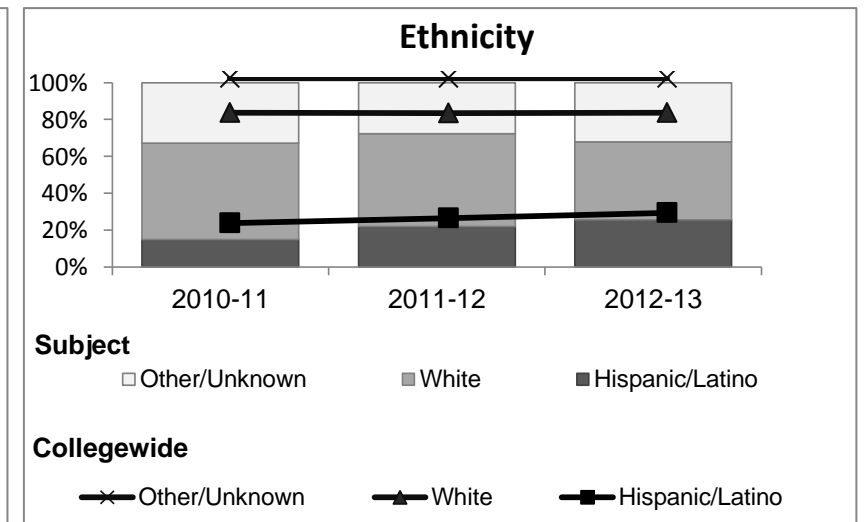
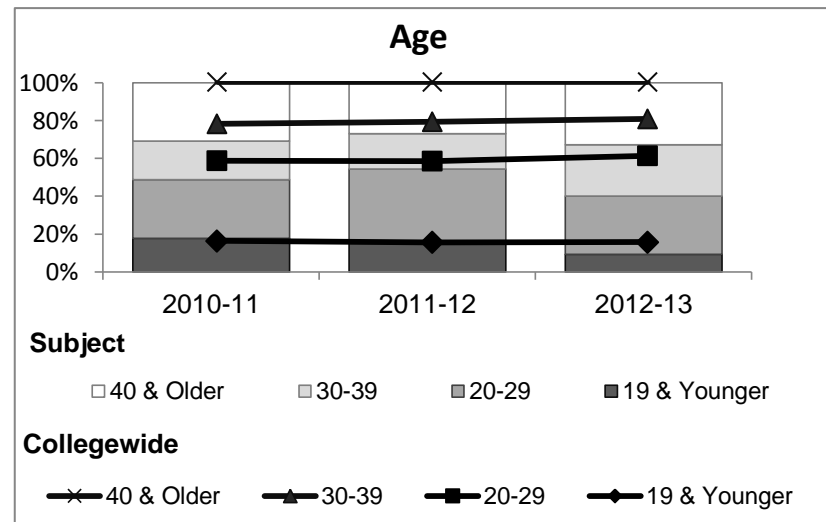
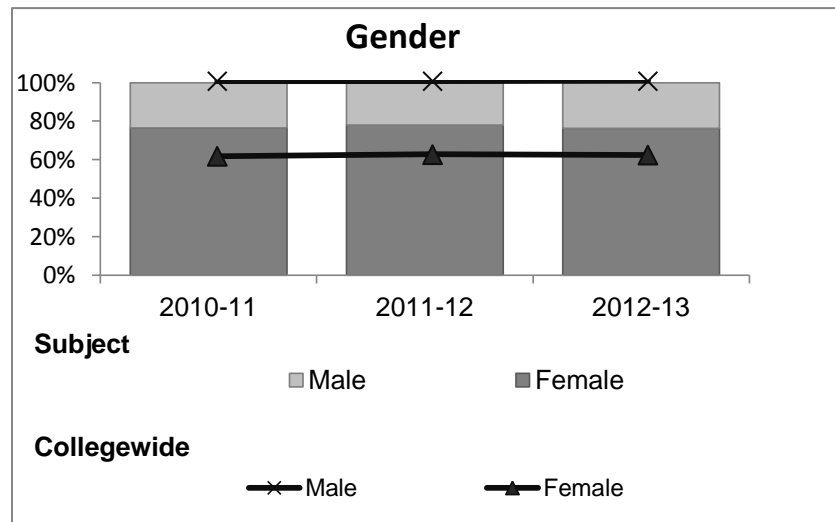


Business Office Technology

Student Demographic Information

Student Headcount	2008-09		2009-10		2010-11		2011-12		2012-13		2012-13	
	#	% change - Prior Yr	#	% change - Prior Yr	#	% change - Prior Yr	#	% change - Prior Yr	Subject		Collegewide	
									#	% change - Prior Yr	#	% change - Prior Yr
Unduplicated ²	221	--	252	14%	220	-13%	145	-34%	152	5%	8,583	-16%

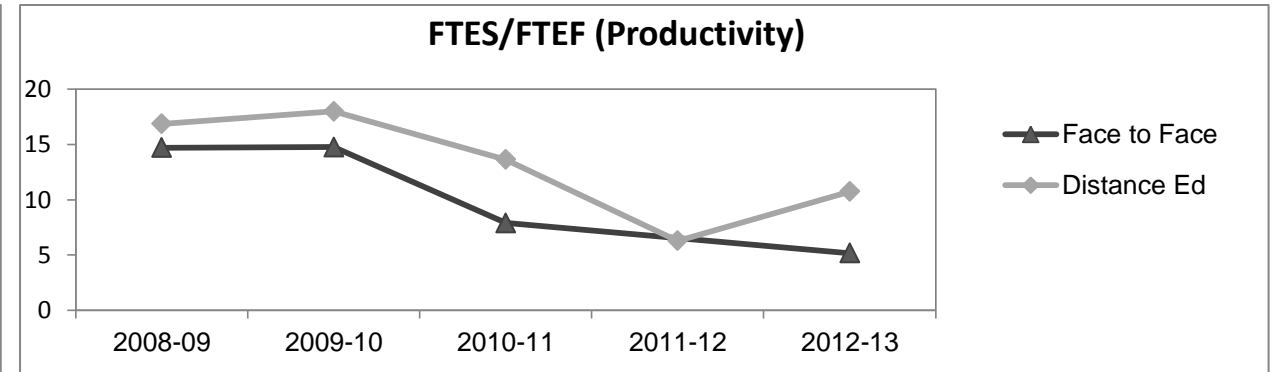
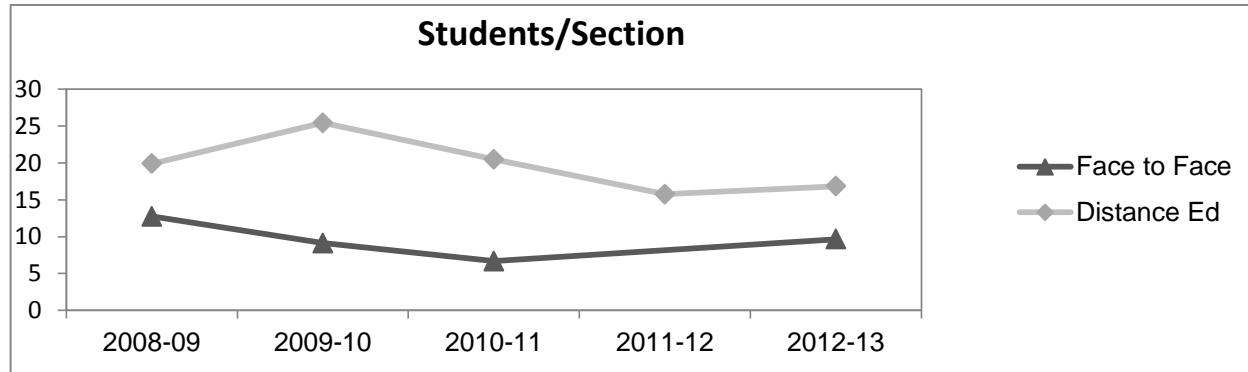
	2008-09		2009-10		2010-11		2011-12		2012-13		2012-13	
	#	%	#	%	#	%	#	%	Subject		Collegewide	
									#	%	#	%
Gender												
Female	166	75%	195	77%	168	76%	113	78%	116	76%	5,289	62%
Male	54	24%	56	22%	52	24%	32	22%	36	24%	3,283	38%
Unknown	1	0%	1	0%	0	0%	0	0%	0	0%	11	0%
Age												
19 & Younger	50	23%	41	16%	39	18%	24	17%	14	9%	1,298	15%
20-29	91	41%	92	37%	68	31%	55	38%	47	31%	3,929	46%
30-39	43	19%	45	18%	45	20%	27	19%	41	27%	1,671	19%
40 & Older	37	17%	74	29%	68	31%	39	27%	50	33%	1,685	20%
Ethnicity												
African American	17	8%	25	10%	19	9%	11	8%	12	8%	502	6%
American Indian	24	11%	32	13%	35	16%	10	7%	24	16%	177	2%
Asian/Filipino/Pac Islander	5	2%	9	4%	5	2%	7	5%	5	3%	416	5%
Hispanic/Latino	40	18%	55	22%	33	15%	32	22%	39	26%	2,554	30%
White	117	53%	120	48%	115	52%	73	50%	64	42%	4,480	52%
Two or more races	6	3%	8	3%	12	5%	11	8%	7	5%	413	5%
Unknown	12	5%	3	1%	1	0%	1	1%	1	1%	41	0%



Business Office Technology

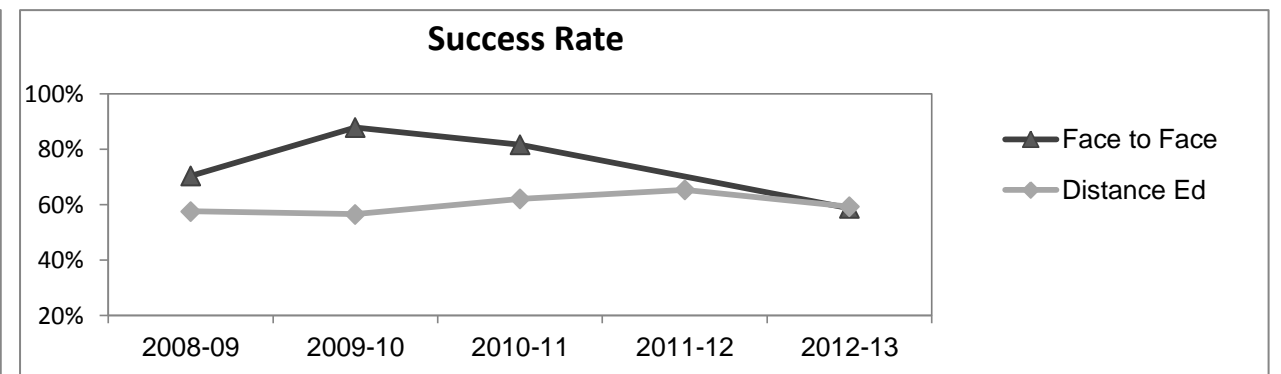
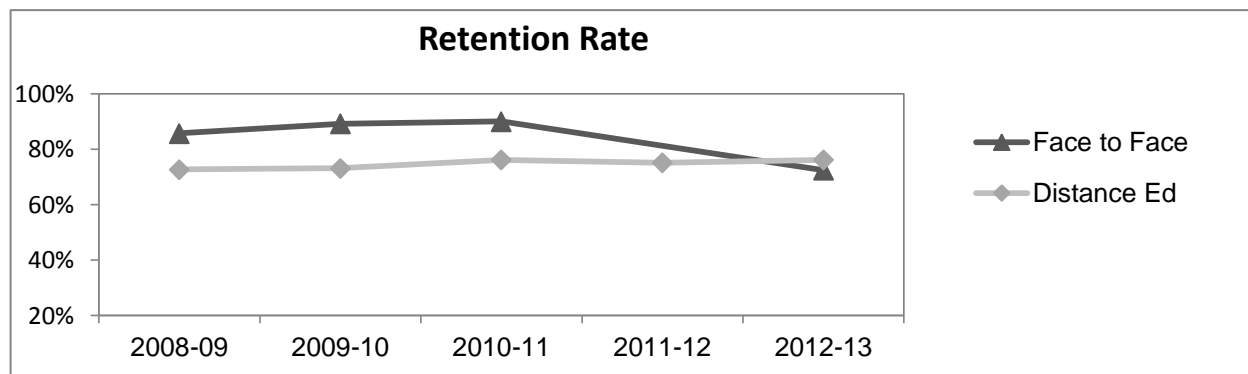
Course Enrollments - Productivity

	2008-09			2009-10			2010-11			2011-12			2012-13			2012-13		
	F-t-F ³	DE	Total	F-t-F ³	DE	Total	F-t-F ³	DE	Total	F-t-F ³	DE	Total	Subject			Collegewide		
	F-t-F ³	DE	Total	F-t-F ³	DE	Total	F-t-F ³	DE	Total	F-t-F ³	DE	Total	F-t-F ³	DE	Total	F-t-F ³	DE	Total
Number of Sections	8	8	16	8	10	18	9	11	20	0	11	11	3	12	15	511	519	1,030
Enrollment ⁴																		
Census	102	159	261	73	254	327	60	225	285	0	173	173	29	202	231	9,387	15,094	24,481
Students/Section ⁵	13	20	16	9	25	18	7	20	14		16	16	10	17	15	18	29	24
Productivity																		
FTES ⁶	7.8	10.6	18.5	5.9	17.9	23.8	4.2	16.3	20.5	0	10.0	10.0	2.1	14.3	16.3	1,368.1	1,573.3	2,941.4
FTEF ⁶	0.5	0.6	1.2	0.4	1.0	1.4	0.5	1.2	1.7	0	1.6	1.6	0.4	1.3	1.7	98.2	104.3	202.5
<i>Contract</i>			46%			29%			19%			0%			29%			38%
<i>Overload</i>			11%			26%			38%			75%			40%			12%
<i>Adjunct</i>			11%			12%			15%			8%			15%			36%
<i>Summer</i>			31%			33%			27%			17%			15%			14%
FTES/FTEF ⁷	14.7	16.8	15.9	14.8	18.0	17.1	7.9	13.6	11.9		6.3	6.3	5.2	10.7	9.4	13.9	15.1	14.5



Outcomes

	2008-09			2009-10			2010-11			2011-12			2012-13			2012-13		
	F-t-F ³	DE	Total	F-t-F ³	DE	Total	F-t-F ³	DE	Total	F-t-F ³	DE	Total	Subject			Collegewide		
	F-t-F ³	DE	Total	F-t-F ³	DE	Total	F-t-F ³	DE	Total	F-t-F ³	DE	Total	F-t-F ³	DE	Total	F-t-F ³	DE	Total
Retention Rate ⁸	85.7%	72.7%	78.1%	89.2%	73.1%	76.8%	90.0%	76.2%	79.1%		75.1%	75.1%	72.4%	76.1%	75.7%	90.1%	78.5%	83.0%
Success Rate ⁸	70.4%	57.6%	62.9%	87.8%	56.5%	63.6%	81.7%	62.1%	66.2%		65.3%	65.3%	58.6%	59.2%	59.1%	75.9%	61.0%	66.8%



Business Office Technology

Degrees - Certificates

	2012-13																	
	2008-09			2009-10			2010-11			2011-12			Subject			Collegewide		
	AA	AS	CERT	AA	AS	CERT	AA	AS	CERT	AA	AS	CERT	AA	AS	CERT	AA	AS	CERT
Awards related to or contributed to by CIS & Business & Digital Arts																		
Business	7	1	0	0	2	2	5	6	3	0	7	1	0	4	3			
Business Administration	2	9	3	13	7	1	19	7	1	23	3	0	24	1	0			
Business Management	0	10	3	0	10	2	0	14	1	0	4	2	0	2	0			
Business Office Technology	0	0	0	0	3	0	0	6	1	0	2	0	0	1	5			
Computer Information Systems	0	3	3	0	3	0	0	7	1	0	5	3	0	9	1			
Computer Science	0	0	0	0	0	0	0	0	0	0	0	0	0	1	0			
Digital Animation	0	6	0	0	2	0	0	0	0	0	0	1	0	0	0			
Management	0	0	0	0	0	0	0	0	0	0	1	0	0	1	0			
Office Assistant	0	0	0	0	0	0	0	0	0	0	0	0	0	0	6			
Office Assistant I	0	0	0	0	0	0	0	0	1	0	0	1	0	0	0			
Office Clerk	0	0	0	0	0	0	0	0	0	0	0	0	0	0	6			
Paralegal Studies	0	2	3	0	1	3	0	2	2	0	0	5	0	4	6			
Small Business Mgmt/Entreprene	0	1	0	0	2	0	0	1	1	0	0	0	0	0	0			
Web Design	0	7	2	0	4	1	0	1	1	0	2	3	0	2	3			
Digital Animation	0	6	0	0	2	0	0	0	0	0	0	1	0	0	0			
Digital Media	2	0	0	3	0	0	7	3	0	0	3	0	0	3	0			
Total Awards by Type	11	45	14	16	36	9	31	47	12	23	27	17	24	28	30	193	61	121
% of total awards by type	16%	64%	20%	26%	59%	15%	34%	52%	13%	34%	40%	25%	29%	34%	37%	51%	16%	32%
Total Awards	70			61			90			67			82			375		
Liberal Arts/Math & Science	3	0	0	14	0	0	21	0	0	23	0	0	44	0	0			
Engineering	2	0	0	3	0	0	7	3	0	0	3	0	0	3	0			
Mathematics	0	0	0	0	0	0	0	0	0	2	0	0	0	3	0			
Human Services	0	0	0	0	6	0	0	5	0	0	8	0	0	6	0			
Human Services Worker	0	0	0	0	0	1	0	0	3	0	0	8	0	0	9			

Notes

- ¹ **Source:** ODS Reports (July, 2013)
- ² **Student Headcount, *Unduplicated*:** Number of students enrolled on census day, where each student is counted one time.
- ³ **F-t-F:** Face to Face instructional delivery mode.
- ⁴ **Enrollment:** Every course in which students are enrolled on census day.
- ⁵ **Students/Section:** Student enrollments per section on census day. Cross-listed sections are not combined.
- ⁶ Acronyms **FTES** and **FTEF** represent full-time equivalent students and full-time equivalent faculty, respectively.
- ⁷ **FTES/FTEF:** A measurement of productivity where the generally accepted target is 17.5.
- ⁸ **Success rate numerator:** Number of course enrollments with a successful passing grade (A,B,C,P/CR).
- Retention rate numerator:** Number of course enrollments retained through the semester (grade = A,B,C,P/CR,D,F,NP/NC,I).
- Success and Retention rate denominator:** Number of enrollments retained (A,B,C,P/CR,D,F,NP/NC,I), withdrawn (W), and dropped after Census Day (DR).