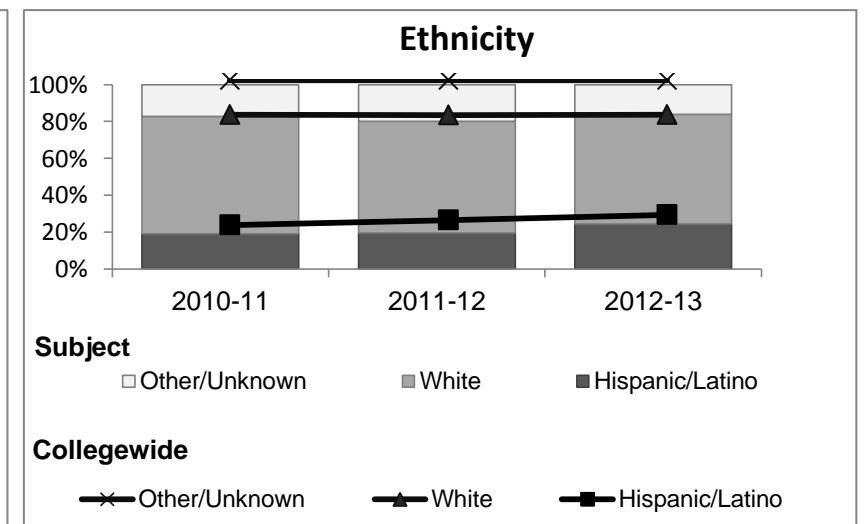
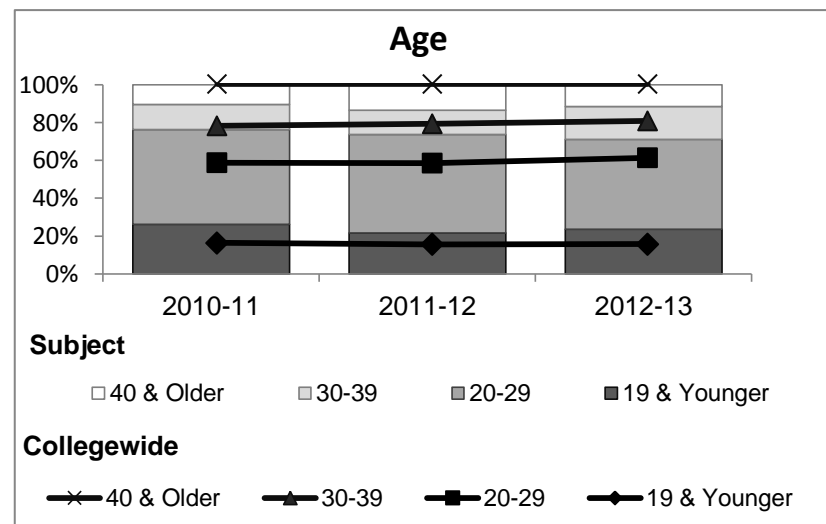
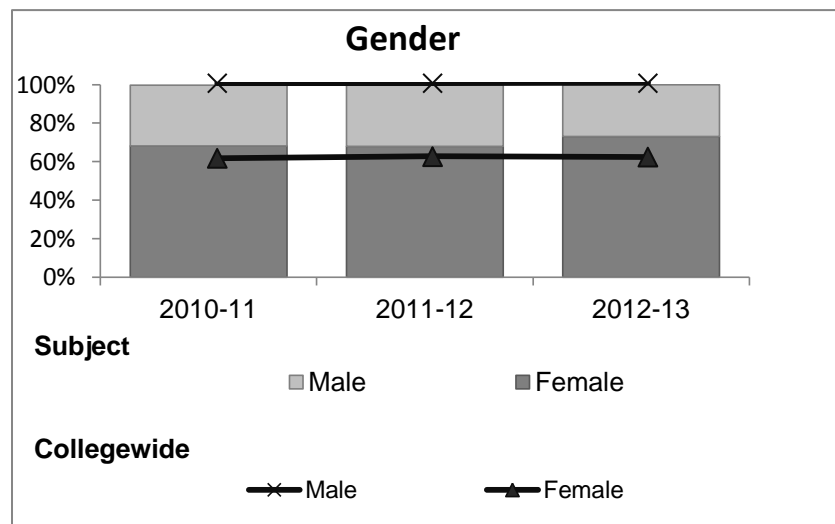


## Biology

### Student Demographic Information

Student Headcount	2008-09		2009-10		2010-11		2011-12		2012-13		2012-13	
	#	% change - Prior Yr	#	% change - Prior Yr	#	% change - Prior Yr	#	% change - Prior Yr	Subject		Collegewide	
									#	% change - Prior Yr	#	% change - Prior Yr
Unduplicated <sup>2</sup>	529	--	565	7%	459	-19%	422	-8%	438	4%	8,583	-16%

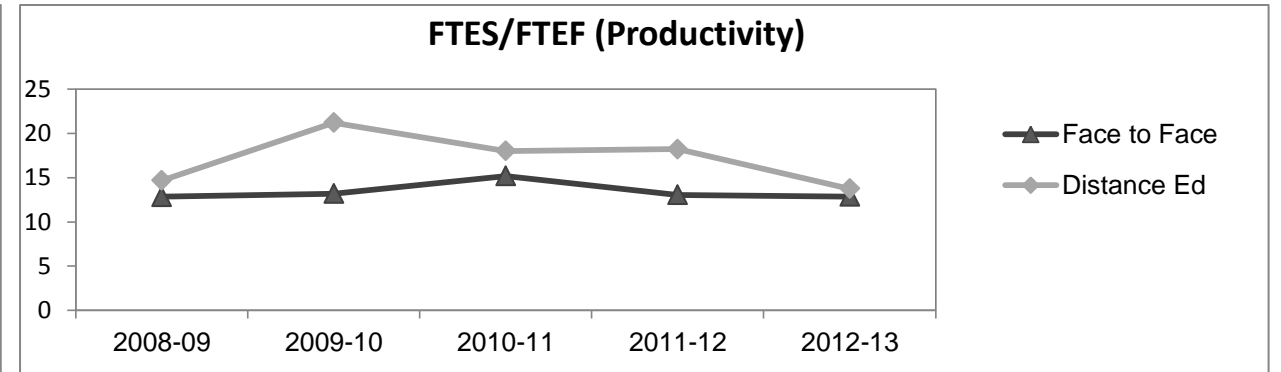
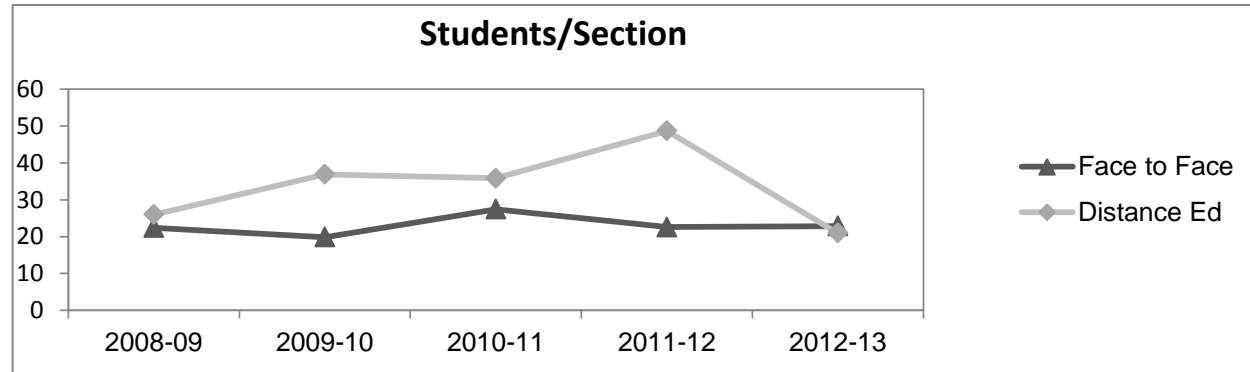
	2008-09		2009-10		2010-11		2011-12		2012-13		2012-13	
	#	%	#	%	#	%	#	%	Subject		Collegewide	
									#	%	#	%
<b>Gender</b>												
Female	365	69%	359	64%	313	68%	287	68%	320	73%	5,289	62%
Male	164	31%	204	36%	145	32%	135	32%	118	27%	3,283	38%
Unknown	0	0%	2	0%	1	0%	0	0%	0	0%	11	0%
<b>Age</b>												
19 & Younger	134	25%	135	24%	120	26%	91	22%	103	24%	1,298	15%
20-29	227	43%	254	45%	230	50%	220	52%	208	47%	3,929	46%
30-39	79	15%	75	13%	61	13%	54	13%	76	17%	1,671	19%
40 & Older	89	17%	101	18%	48	10%	57	14%	51	12%	1,685	20%
<b>Ethnicity</b>												
African American	17	3%	29	5%	29	6%	17	4%	17	4%	502	6%
American Indian	6	1%	12	2%	12	3%	21	5%	15	3%	177	2%
Asian/Filipino/Pac Islander	31	6%	22	4%	17	4%	16	4%	17	4%	416	5%
Hispanic/Latino	71	13%	98	17%	88	19%	83	20%	107	24%	2,554	30%
White	366	69%	372	66%	292	64%	255	60%	260	59%	4,480	52%
Two or more races	21	4%	16	3%	21	5%	29	7%	22	5%	413	5%
Unknown	17	3%	16	3%	0	0%	1	0%	0	0%	41	0%



## Biology

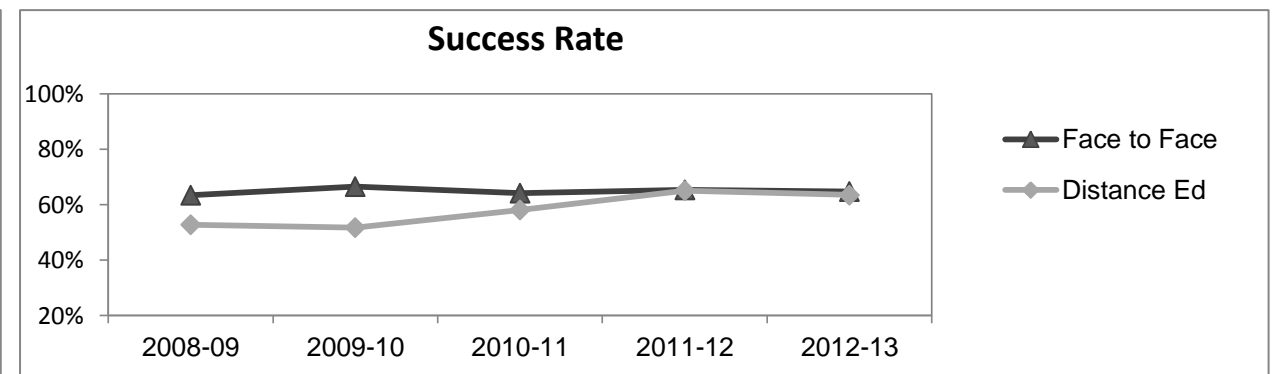
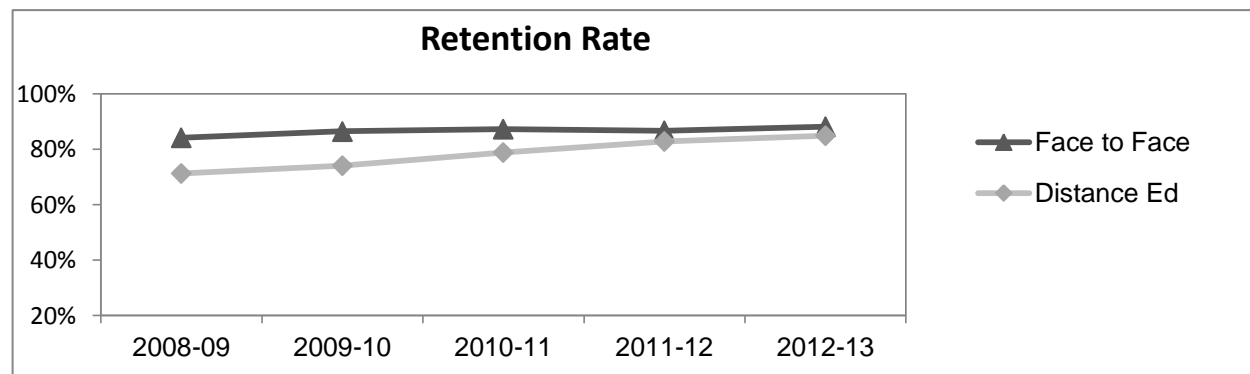
### Course Enrollments - Productivity

	2008-09			2009-10			2010-11			2011-12			2012-13			2012-13		
	F-t-F <sup>3</sup>	DE	Total	F-t-F <sup>3</sup>	DE	Total	F-t-F <sup>3</sup>	DE	Total	F-t-F <sup>3</sup>	DE	Total	Subject			Collegewide		
	F-t-F <sup>3</sup>	DE	Total	F-t-F <sup>3</sup>	DE	Total	F-t-F <sup>3</sup>	DE	Total	F-t-F <sup>3</sup>	DE	Total	F-t-F <sup>3</sup>	DE	Total	F-t-F <sup>3</sup>	DE	Total
Number of Sections	25	8	33	20	7	27	14	5	19	20	3	23	17	6	23	511	519	1,030
Enrollment <sup>4</sup>																		
Census	560	208	768	397	258	655	384	179	563	452	146	598	389	126	515	9,387	15,094	24,481
Students/Section <sup>5</sup>	22	26	23	20	37	24	27	36	30	23	49	26	23	21	22	18	29	24
Productivity																		
FTES <sup>6</sup>	82.1	19.8	101.9	73.0	31.1	104.1	77.9	22.8	100.8	85.3	10.9	96.2	81.5	19.7	101.2	1,368.1	1,573.3	2,941.4
FTEF <sup>6</sup>	6.4	1.4	7.7	5.5	1.5	7.0	5.1	1.3	6.4	6.5	0.6	7.1	6.3	1.4	7.8	98.2	104.3	202.5
Contract			45%			70%			73%			63%			46%			38%
Overload			10%			11%			1%			15%			7%			12%
Adjunct			38%			11%			23%			22%			41%			36%
Summer			7%			7%			3%			0%			5%			14%
FTES/FTEF <sup>7</sup>	12.8	14.7	13.2	13.2	21.2	14.9	15.2	18.0	15.7	13.0	18.2	13.5	12.9	13.7	13.0	13.9	15.1	14.5



### Outcomes

	2008-09			2009-10			2010-11			2011-12			2012-13			2012-13		
	F-t-F <sup>3</sup>	DE	Total	F-t-F <sup>3</sup>	DE	Total	F-t-F <sup>3</sup>	DE	Total	F-t-F <sup>3</sup>	DE	Total	Subject			Collegewide		
	F-t-F <sup>3</sup>	DE	Total	F-t-F <sup>3</sup>	DE	Total	F-t-F <sup>3</sup>	DE	Total	F-t-F <sup>3</sup>	DE	Total	F-t-F <sup>3</sup>	DE	Total	F-t-F <sup>3</sup>	DE	Total
Retention Rate <sup>8</sup>	84.2%	71.2%	80.7%	86.4%	74.1%	81.5%	87.3%	78.8%	84.6%	86.7%	82.9%	85.7%	88.2%	84.9%	87.4%	90.1%	78.5%	83.0%
Success Rate <sup>8</sup>	63.4%	52.7%	60.5%	66.5%	51.7%	60.6%	64.2%	58.1%	62.2%	65.3%	65.1%	65.3%	64.8%	63.5%	64.5%	75.9%	61.0%	66.8%



## Biology

### Degrees - Certificates

													2012-13					
	2008-09			2009-10			2010-11			2011-12			Subject			Collegewide		
	AA	AS	CERT	AA	AS	CERT	AA	AS	CERT	AA	AS	CERT	AA	AS	CERT	AA	AS	CERT
Awards related to or contributed to by Science																		
Engineering Drafting Technlgy	0	0	0	0	0	0	0	1	0	0	0	0	0	0	0	0	0	0
Engineering Technology	0	0	0	0	0	0	0	2	0	0	2	0	0	0	0	0	0	
Engineering, General	0	0	0	0	0	0	3	0	0	0	1	0	0	3	0	0	0	
General Science	0	0	0	6	0	0	4	0	0	2	0	0	5	0	0	0	0	
Pre-engineering	2	0	0	3	0	0	4	0	0	0	0	0	0	0	0	0	0	
<b>Total Awards by Type</b>	2	0	0	9	0	0	11	3	0	2	3	0	5	3	0	193	61	121
<b>% of total awards by type</b>	100%	0%	0%	100%	0%	0%	79%	21%	0%	40%	60%	0%	63%	38%	0%	51%	16%	32%
<b>Total Awards</b>	2			9			14			5			8			375		
Liberal Arts/Math & Science	3	0	0	14	0	0	21	0	0	23	0	0	44	0	0			
Physical Education	0	0	0	0	0	0	0	0	0	1	0	0	1	0	0			
Computer Science	0	0	0	0	0	0	0	0	0	0	0	0	0	1	0			
Mathematics	0	0	0	0	0	0	0	0	0	2	0	0	0	3	0			

**Notes**

- <sup>1</sup> **Source:** ODS Reports (July, 2013)
- <sup>2</sup> **Student Headcount, *Unduplicated*:** Number of students enrolled on census day, where each student is counted one time.
- <sup>3</sup> **F-t-F:** Face to Face instructional delivery mode.
- <sup>4</sup> **Enrollment:** Every course in which students are enrolled on census day.
- <sup>5</sup> **Students/Section:** Student enrollments per section on census day. Cross-listed sections are not combined.
- <sup>6</sup> Acronyms **FTES** and **FTEF** represent full-time equivalent students and full-time equivalent faculty, respectively.
- <sup>7</sup> **FTES/FTEF:** A measurement of productivity where the generally accepted target is 17.5.
- <sup>8</sup> **Success rate numerator:** Number of course enrollments with a successful passing grade (A,B,C,P/CR).
- Retention rate numerator:** Number of course enrollments retained through the semester (grade = A,B,C,P/CR,D,F,NP/NC,I).
- Success and Retention rate denominator:** Number of enrollments retained (A,B,C,P/CR,D,F,NP/NC,I), withdrawn (W), and dropped after Census Day (DR).