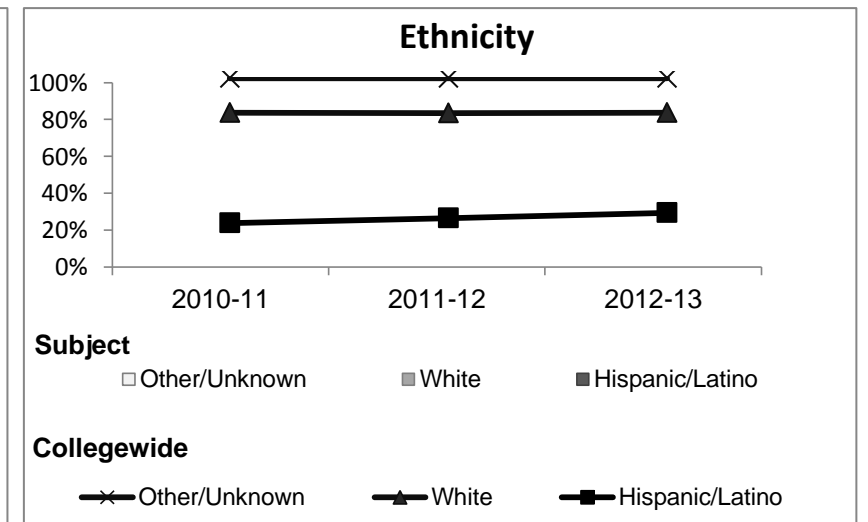
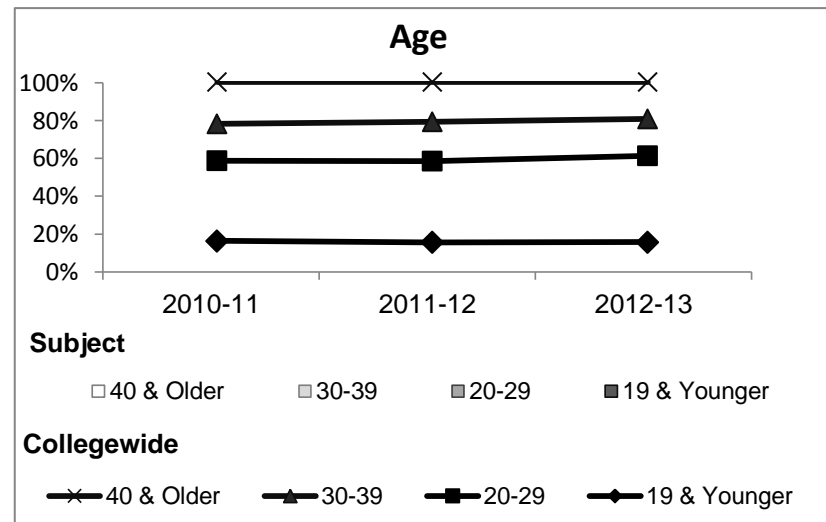


Automotive Technology

Student Demographic Information

Student Headcount	2008-09		2009-10		2010-11		2011-12		2012-13		2012-13	
	#	% change - Prior Yr	#	% change - Prior Yr	#	% change - Prior Yr	#	% change - Prior Yr	Subject		Collegewide	
									#	% change - Prior Yr	#	% change - Prior Yr
Unduplicated ²	53	--	18	-66%		-		-			8,583	-16%

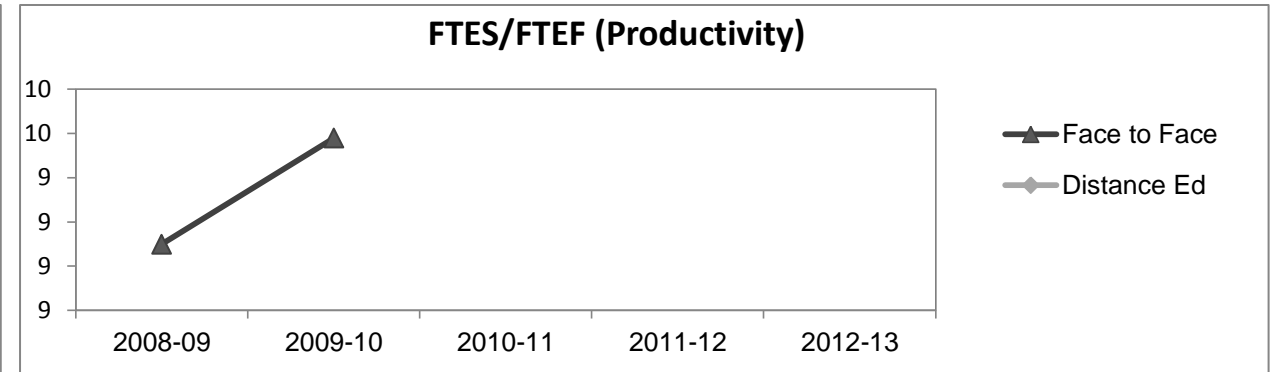
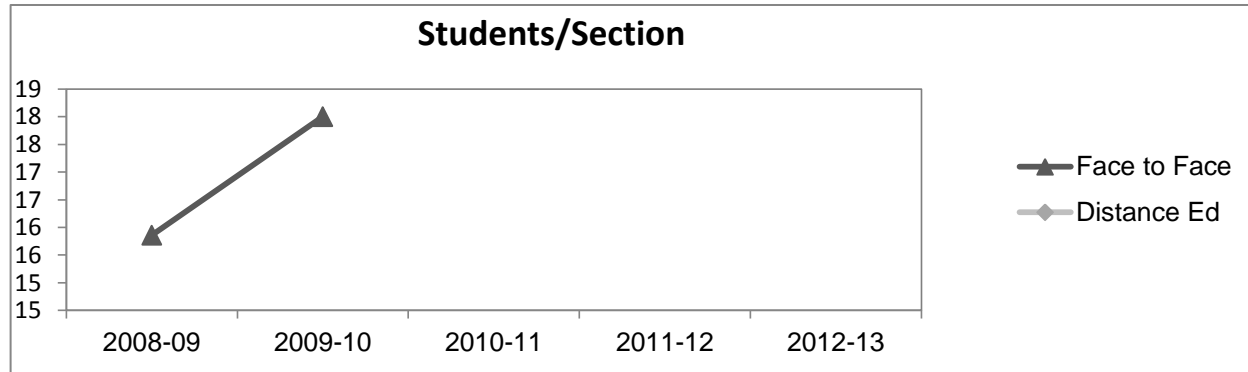
	2008-09		2009-10		2010-11		2011-12		2012-13		2012-13	
	#	%	#	%	#	%	#	%	Subject		Collegewide	
									#	%	#	%
Gender												
Female	4	8%	0	0%							5,289	62%
Male	49	92%	18	100%							3,283	38%
Unknown	0	0%	0	0%							11	0%
Age												
19 & Younger	10	19%	3	17%							1,298	15%
20-29	24	45%	8	44%							3,929	46%
30-39	7	13%	4	22%							1,671	19%
40 & Older	12	23%	3	17%							1,685	20%
Ethnicity												
African American	4	8%	0	0%							502	6%
American Indian	3	6%	0	0%							177	2%
Asian/Filipino/Pac Islander	2	4%	1	6%							416	5%
Hispanic/Latino	6	11%	5	28%							2,554	30%
White	36	68%	11	61%							4,480	52%
Two or more races	0	0%	0	0%							413	5%
Unknown	2	4%	1	6%							41	0%



Automotive Technology

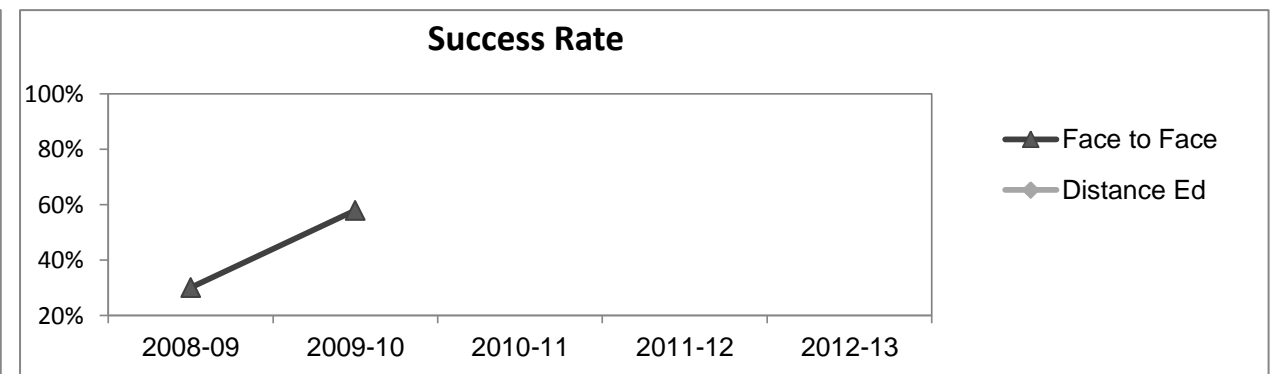
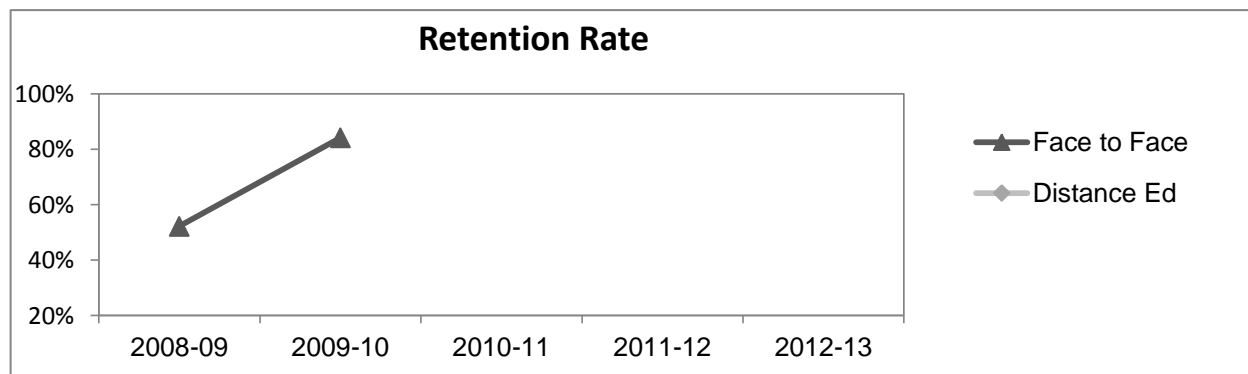
Course Enrollments - Productivity

	2008-09			2009-10			2010-11			2011-12			2012-13			2012-13		
	F-t-F ³	DE	Total	F-t-F ³	DE	Total	F-t-F ³	DE	Total	F-t-F ³	DE	Total	Subject			Collegewide		
	F-t-F ³	DE	Total	F-t-F ³	DE	Total	F-t-F ³	DE	Total	F-t-F ³	DE	Total	F-t-F ³	DE	Total	F-t-F ³	DE	Total
Number of Sections	7	0	7	1	0	1	0	0	0	0	0	0	0	0	0	511	519	1,030
Enrollment ⁴																		
Census	111	0	111	18	0	18	0	0	0	0	0	0	0	0	0	9,387	15,094	24,481
Students/Section ⁵	16		16	18		18										18	29	24
Productivity																		
FTES ⁶	33.4	0	33.4	4.5	0	4.5	0	0	0.0	0	0	0.0	0	0	0.0	1,368.1	1,573.3	2,941.4
FTEF ⁶	3.7	0	3.7	0.5	0	0.5	0	0	0.0	0	0	0.0	0	0	0.0	98.2	104.3	202.5
<i>Contract</i>			38%			60%												38%
<i>Overload</i>			29%			0%												12%
<i>Adjunct</i>			33%			40%												36%
<i>Summer</i>			0%			0%												14%
FTES/FTEF ⁷	9.1		9.1	9.6		9.6										13.9	15.1	14.5



Outcomes

	2008-09			2009-10			2010-11			2011-12			2012-13			2012-13		
	F-t-F ³	DE	Total	F-t-F ³	DE	Total	F-t-F ³	DE	Total	F-t-F ³	DE	Total	Subject			Collegewide		
	F-t-F ³	DE	Total	F-t-F ³	DE	Total	F-t-F ³	DE	Total	F-t-F ³	DE	Total	F-t-F ³	DE	Total	F-t-F ³	DE	Total
Retention Rate ⁸	52.2%		52.2%	84.2%		84.2%										90.1%	78.5%	83.0%
Success Rate ⁸	30.1%		30.1%	57.9%		57.9%										75.9%	61.0%	66.8%



Automotive Technology

Degrees - Certificates

	2008-09			2009-10			2010-11			2011-12			2012-13			Collegewide		
	AA	AS	CERT	AA	AS	CERT	AA	AS	CERT	AA	AS	CERT	AA	AS	CERT	AA	AS	CERT
Awards related to or contributed to by Industrial Arts																		
Automotive Technology	0	0	0	0	1	0	0	0	0	0	0	0	0	0	0			
Indstrl Tech: Engineering Tech	0	0	0	0	0	0	0	1	0	0	0	0	0	0	0			
Indstrl Tech: Solar Technician	0	0	0	0	0	0	0	0	1	0	0	7	0	2	0			
Indstrl Tech: Wind Technician	0	0	0	0	0	0	0	0	0	0	0	2	0	0	0			
Industrial Technology	0	0	0	0	0	0	0	0	0	0	1	1	0	0	0			
Trades Practices	1	0	0	2	0	0	1	0	0	1	0	0	0	0	0			
Welding	0	0	0	0	1	0	0	0	0	0	0	0	0	0	0			
Welding Processes	0	0	0	0	0	0	0	0	0	0	0	5	0	0	19			
Welding Technology	0	0	2	0	0	4	0	1	3	0	4	11	0	7	15			
Total Awards by Type	1	0	2	2	2	4	1	2	4	1	5	26	0	9	34	193	61	121
% of total awards by type	33%	0%	67%	25%	25%	50%	14%	29%	57%	3%	16%	81%	0%	21%	79%	51%	16%	32%
Total Awards	3			8			7			32			43			375		

Notes¹ **Source:** ODS Reports (July, 2013)² **Student Headcount, *Unduplicated*:** Number of students enrolled on census day, where each student is counted one time.³ **F-t-F:** Face to Face instructional delivery mode.⁴ **Enrollment:** Every course in which students are enrolled on census day.⁵ **Students/Section:** Student enrollments per section on census day. Cross-listed sections are not combined.⁶ Acronyms **FTES** and **FTEF** represent full-time equivalent students and full-time equivalent faculty, respectively.⁷ **FTES/FTEF:** A measurement of productivity where the generally accepted target is 17.5.⁸ **Success rate numerator:** Number of course enrollments with a successful passing grade (A,B,C,P/CR).**Retention rate numerator:** Number of course enrollments retained through the semester (grade = A,B,C,P/CR,D,F,NP/NC,I).**Success and Retention rate denominator:** Number of enrollments retained (A,B,C,P/CR,D,F,NP/NC,I), withdrawn (W), and dropped after Census Day (DR).