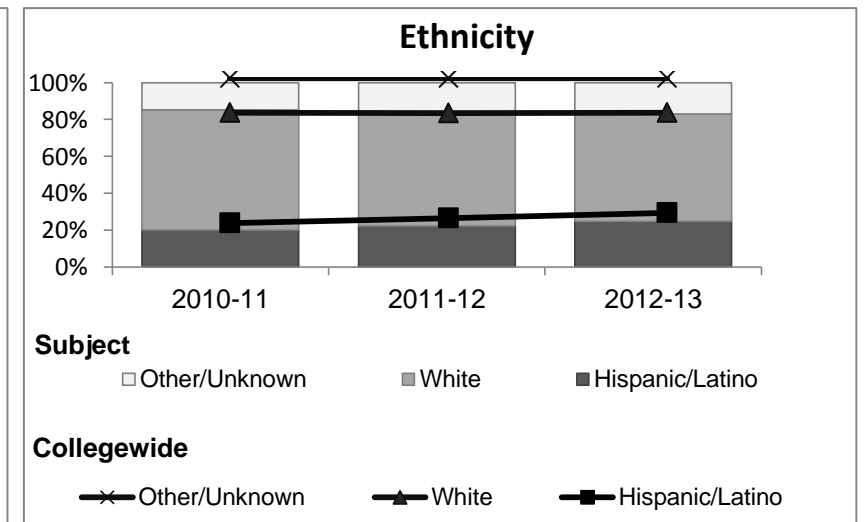
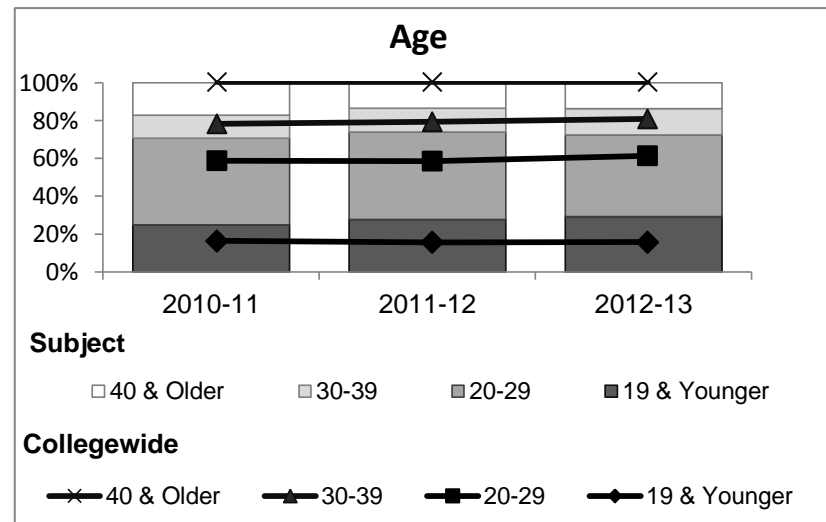
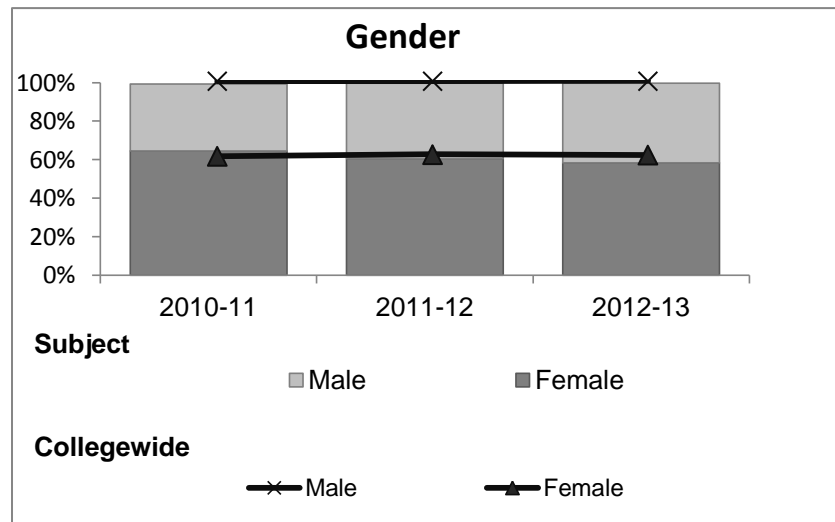


Art

Student Demographic Information

Student Headcount	2008-09		2009-10		2010-11		2011-12		2012-13		2012-13	
	#	% change - Prior Yr	#	% change - Prior Yr	#	% change - Prior Yr	#	% change - Prior Yr	Subject		Collegewide	
									#	% change - Prior Yr	#	% change - Prior Yr
Unduplicated ²	778	--	693	-11%	741	7%	769	4%	819	7%	8,583	-16%

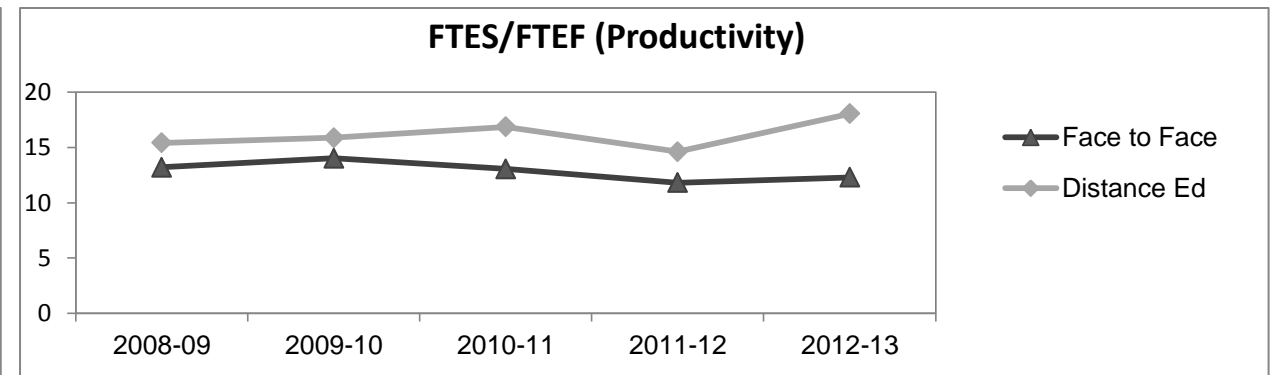
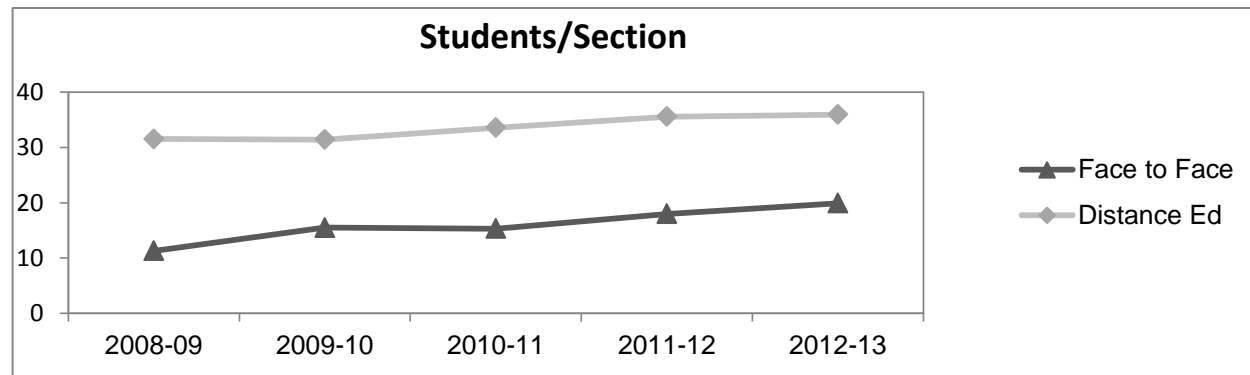
	2008-09		2009-10		2010-11		2011-12		2012-13		2012-13	
	#	%	#	%	#	%	#	%	Subject		Collegewide	
									#	%	#	%
Gender												
Female	509	65%	431	62%	479	65%	466	61%	478	58%	5,289	62%
Male	268	34%	258	37%	256	35%	300	39%	338	41%	3,283	38%
Unknown	1	0%	4	1%	6	1%	3	0%	3	0%	11	0%
Age												
19 & Younger	223	29%	202	29%	185	25%	213	28%	240	29%	1,298	15%
20-29	236	30%	228	33%	338	46%	356	46%	352	43%	3,929	46%
30-39	84	11%	72	10%	91	12%	96	12%	115	14%	1,671	19%
40 & Older	235	30%	190	27%	127	17%	104	14%	112	14%	1,685	20%
Ethnicity												
African American	17	2%	20	3%	35	5%	27	4%	29	4%	502	6%
American Indian	23	3%	24	3%	15	2%	26	3%	21	3%	177	2%
Asian/Filipino/Pac Islander	17	2%	18	3%	19	3%	25	3%	23	3%	416	5%
Hispanic/Latino	98	13%	102	15%	149	20%	172	22%	202	25%	2,554	30%
White	566	73%	484	70%	483	65%	477	62%	478	58%	4,480	52%
Two or more races	20	3%	24	3%	38	5%	40	5%	64	8%	413	5%
Unknown	37	5%	21	3%	2	0%	2	0%	2	0%	41	0%



Art

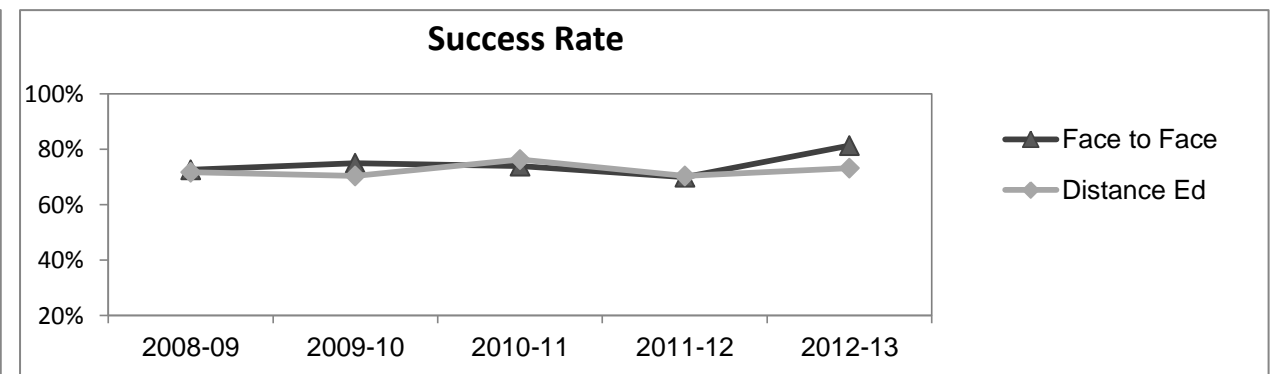
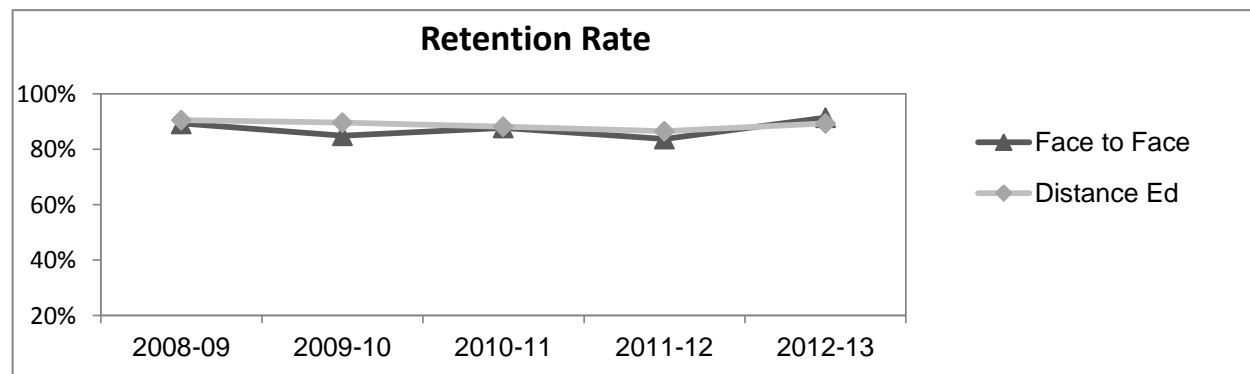
Course Enrollments - Productivity

	2008-09			2009-10			2010-11			2011-12			2012-13			2012-13		
	F-t-F ³	DE	Total	F-t-F ³	DE	Total	F-t-F ³	DE	Total	F-t-F ³	DE	Total	Subject			Collegewide		
	F-t-F ³	DE	Total	F-t-F ³	DE	Total	F-t-F ³	DE	Total	F-t-F ³	DE	Total	F-t-F ³	DE	Total	F-t-F ³	DE	Total
Number of Sections	80	4	84	49	5	54	39	9	48	34	9	43	27	11	38	511	519	1,030
Enrollment ⁴																		
Census	905	126	1,031	759	157	916	598	302	900	611	320	931	538	395	933	9,387	15,094	24,481
Students/Section ⁵	11	32	12	15	31	17	15	34	19	18	36	22	20	36	25	18	29	24
Productivity																		
FTES ⁶	154.5	22.6	177.1	128.5	31.7	160.2	112.3	60.7	172.9	115.7	64.3	180.0	103.2	79.3	182.6	1,368.1	1,573.3	2,941.4
FTEF ⁶	11.7	1.5	13.2	9.2	2.0	11.2	8.6	3.6	12.2	9.8	4.4	14.2	8.4	4.4	12.8	98.2	104.3	202.5
Contract			29%			29%			25%			27%			29%			38%
Overload			18%			17%			14%			24%			19%			12%
Adjunct			44%			41%			43%			41%			37%			36%
Summer			9%			13%			18%			8%			16%			14%
FTES/FTEF ⁷	13.2	15.4	13.5	14.0	15.9	14.3	13.1	16.9	14.2	11.8	14.6	12.7	12.3	18.0	14.3	13.9	15.1	14.5



Outcomes

	2008-09			2009-10			2010-11			2011-12			2012-13			2012-13		
	F-t-F ³	DE	Total	F-t-F ³	DE	Total	F-t-F ³	DE	Total	F-t-F ³	DE	Total	Subject			Collegewide		
	F-t-F ³	DE	Total	F-t-F ³	DE	Total	F-t-F ³	DE	Total	F-t-F ³	DE	Total	F-t-F ³	DE	Total	F-t-F ³	DE	Total
Retention Rate ⁸	89.3%	90.6%	89.4%	84.9%	89.7%	85.7%	87.7%	88.2%	87.9%	83.7%	86.6%	84.7%	91.4%	89.4%	90.6%	90.1%	78.5%	83.0%
Success Rate ⁸	72.6%	71.7%	72.5%	75.0%	70.3%	74.2%	74.0%	76.3%	74.8%	69.9%	70.3%	70.0%	81.4%	73.2%	77.9%	75.9%	61.0%	66.8%



Trend Data from Institutional Research & Reporting¹

Art

Degrees - Certificates

													2012-13					
	2008-09			2009-10			2010-11			2011-12			Subject			Collegewide		
	AA	AS	CERT	AA	AS	CERT	AA	AS	CERT	AA	AS	CERT	AA	AS	CERT	AA	AS	CERT
Awards related to or contributed to by Visual & Performing Arts																		
Art	0	0	0	2	0	0	3	0	0	0	0	0	0	0	0			
Theatre Arts	0	0	0	0	0	0	1	0	0	0	0	0	0	0	0			
Fine Arts	0	0	0	1	0	0	4	0	0	2	0	0	0	0	0			
Total Awards by Type	0	0	0	3	0	0	8	0	0	2	0	0	0	0	0	193	61	121
% of total awards by type				100%	0%	0%	100%	0%	0%	100%	0%	0%				51%	16%	32%
Total Awards	0			3			8			2			0			375		
Liberal Arts/Arts & Humanities	3	0	0	13	0	0	33	0	0	37	0	0	42	0	0			
Web Design	0	7	2	0	4	1	0	1	1	0	2	3	0	2	3			
Digital Animation	0	6	0	0	2	0	0	0	0	0	0	1	0	0	0			
Digital Media	0	0	0	0	0	0	0	0	0	0	0	0	0	0	3			

Notes

¹ Source: ODS Reports (July, 2013)

² Student Headcount, **Unduplicated**: Number of students enrolled on census day, where each student is counted one time.

³ F-t-F: Face to Face instructional delivery mode.

⁴ Enrollment: Every course in which students are enrolled on census day.

⁵ Students/Section: Student enrollments per section on census day. Cross-listed sections are not combined.

⁶ Acronyms FTES and FTEF represent full-time equivalent students and full-time equivalent faculty, respectively.

⁷ FTES/FTEF: A measurement of productivity where the generally accepted target is 17.5.

⁸ Success rate numerator: Number of course enrollments with a successful passing grade (A,B,C,P/CR).

Retention rate numerator: Number of course enrollments retained through the semester (grade = A,B,C,P/CR,D,F,NP/NC,I).

Success and Retention rate denominator: Number of enrollments retained (A,B,C,P/CR,D,F,NP/NC,I), withdrawn (W), and dropped after Census Day (DR).