

Health Science &
Physical
Education
Department Unit
Plan (proposed 10/31/11)

2012-13



Annual Unit Plan Template 2012-2013 Academic Year

STEP I: DESCRIBE YOUR DEPARTMENT/UNIT

a. Mission

Based on a specific set of learning outcomes, the mission of the Health Science and Physical Education Department is to provide a comprehensive transfer curriculum in physical education, health, fitness and wellness related activities. This includes all populations of the college: those in the Physical Education Major, those in other AA and/or AS degree programs, those transferring to universities and colleges, community members and for those students seeking lifelong health, wellness and leisure time skills and knowledge. Students engage in a wide spectrum of educational experiences designed to fulfill their academic and career needs.

b. Program Applicability

[Give here a complete list of the instructional programs your unit supports; if all, state all]

AA Physical Education
General Education



c. Partnerships

[Describe any partnerships (community, industry, education) your unit participates in]
None involving monetary compensation. However, community involvement is listed under step 2, item 5.

d. Distance Education

[Does your unit have a distance education component? Describe it here; explain how it allows your unit to fulfill the college mission]

The Distance Education component for this department involves General Education requirements and the Physical Education Major. The Department currently offers two courses: a Foundations of Physical Education course (required for majors) and the Principles of Health Education (Major and General Education). We have a very limited number of online offerings at this time, but they do permit online access to our general student population.

STEP 2: EXPLAIN YOUR PLANNING

a. Review of Previous Goals (of last completed academic year)

1. The Health Science and Physical Education Department will continually strive to promote and increase student participation and retention while continuing to examine our online and on ground course offerings while responding to student needs.

Response: Over the past year, course scheduling in both areas has been carefully examined. These actions have resulted in reduced class offerings and improved time block scheduling for a variety of on ground courses. The Physical Education Major was revised with course SLO and certain course deletions during the spring semester of 2011. Online courses are currently be evaluated for their influence with respect to student needs.



2. The Health Science and Physical Education Department will examine District provided evaluations of student success and retention and respond accordingly to ensure future program and student needs are met.

Response: The Department has moved in a positive direction in decreasing the gap between Retention and Success Rates See “Student Retention and Success Rate Comparison Chart” at end of this document.

3. The faculty will conduct program review in accordance to the schedule developed by Cerro Coso Community College Academic Senate.

Response: Program Review will be completed during the spring of 2012.

4. The faculty will continue to update classes to meet SB 1440 requirements.

Response: State-Wide approved Transfer Model Curriculum for Physical Education will be presented to the Curriculum Committee in spring of 2012. If the proposed program revisions are approved by the Curriculum Committee, implementation will follow.



5. The Health Science and Physical Education Department will promote our programs through college and community sponsored fitness events, clinics, camps, and lectures to a culturally diverse population.

Response: The Health Science and Physical Education Department has increased outreach to the community by hosting

- Special Olympics
- Junior Olympics
- Relay for Life
- Local tennis club USTA league
- IWV Youth Cheer program
- Over the Hill Track Club
- Summer/winter camps offered through baseball and basketball programs
- Relay for life
- Community Health Fair
- Host and participate in college recruitment efforts
- Preview day
- Grade Level 6-12 athletic team (girls and boys teams) practices and several athletic contests in the sports of track and field, cross country, basketball, and girls volleyball.

6. The department will continue to examine the class schedule and its productivity to ensure high levels of efficiency within the department.

Response: Please see the "Course Offerings and FTES" chart at the end of this document. It should indicate that while the Department has become more efficient by reducing course offerings, we have managed to maintain a relatively high FTES count.



7. Examine state and all other funding sources to plan and construct a self sustaining aquatic fitness facility.

Response: In the Department's view, this would be an extremely worthwhile project. However, upon investigation the current budget constraints state-wide have forced us to "table" this goal for the near future.

8. We anticipate two faculty needs in the near future. One should be a replacement due to retirement and one should be a new position offered in Eastern Sierra.

Response: Action on this goal has been deferred to the upcoming Spring 2012 Department Program Review process.

b. Review of Overall Department/Unit

[What needs/opportunities did your last program review(s) reveal? Did your most recent SLO assessments demonstrate gaps to be addressed? What is working with your unit? What improvements need to be made?]

There have been so many changes to our college processes over the past five years. The department has made efforts to adjust to new requirements that are being implemented, not only locally, but state-wide. With student needs being one of the primary movers, many adjustments/changes have been made. The timing of the upcoming Program Review will be advantageous in the sense that it will provide a needed, in depth, look at the department. Improvements should be a natural result of that process. At this point in time, we are not sure what recommendations for change will surface.

At the present time, the department appears to be working relatively well, with curriculum and scheduling issues being the dominate change agent.



c. Goals for Upcoming Year (next academic year). Three goals not required. If more goals needed, copy and paste additional boxes.

Goal 1: Full implementation of the SB 1440 Transfer Model Curriculum for the Physical Education Major.

1. Connection to College Strategic Goals:

CCCC Goal Number One: Improve our response to community needs through customized educational opportunities, transfer program, area workforce development, and quality student services

2. Specific internal* or external** condition(s) the goal is a response to: A. Maintain availability of comprehensive quality associate degrees and transfer program.

3. Action Plan: Presenting Physical Education Program revisions to the Curriculum Committee for approval. This may include further SLO revisions as well.

4. Measure of Success: Approved Transfer Model Curriculum for Physical Education in place.

Goal 2

1. Connection to College Strategic Goals:

2. Specific internal* or external** condition(s) the goal is a response to:

3. Action Plan:

4. Measure of Success:

Goal 3

1. Connection to College Strategic Goals:

2. Specific internal* or external** condition(s) the goal is a response to:



3. Action Plan:

4. Measure of Success:

STEP 3: SUBSTANTIATE REQUESTED RESOURCES (Note: All items must be prioritized.)

a. New Classified Staffing. *If more lines are needed, Tab over from the bottom-right box.*

The Department is scheduled for Program Review in spring of 2012. Requests and the required documentation/justification, for Classified Staffing will be addressed in that document.

Position Title	Location	Priority: 1 = high 2 = med 3 = low	Strategic Plan goal addressed by this position	Salary Grade	Number of Months	Number of Hours per Week	Salary Amount	Funding Source: G=General Fund R=Restricted (be specific)
None at this time								

Classified Staffing Justification.

1. Describe how the position is linked to your unit's mission and goals, recent Program Review or SLO assessment gaps, planning assumptions, and/or the College's strategic plan.



2. Explain why the work of this position cannot be assigned to current staff.

3. Describe the impact on the college if the position is not filled.

b. New Full-Time Faculty Staffing

Discipline	Affected Programs	Location	Priority	Strategic Plan goal addressed by this position	Funding Source: G=General Fund R=Restricted (be specific)

Full-Time Faculty Staffing Justification: While we believe that an additional Full-Time position should be considered, it should be noted that the Department is scheduled for Program Review in Spring of 2012. Requests, and the required documentation/justification/data for new Full-Time Faculty, will be fully assessed at that time.



c. Supplies (per unit cost less than \$1000). Enter requests on lines below. If more rows needed, Tab over from box on bottom right.

Describe resource requested	Location	Priority: 1 = high 2 = med 3 = low	Strategic Plan goal addressed by this resource	Provide a detailed rationale for the requested resource. The rationale should refer to your unit's mission and goals, recent Program Review or SLO assessment gaps, planning assumptions, and/or the College's Strategic Plan	Estimated amount of funding requested	Will this be one-time or on-going funding?	Funding Source: G=General Fund R=Restricted V = VTEA
Printer Cartridges	IWV	3A	1A	Quality instruction is impacted	\$300.00	Ongoing	G
Weight Room Dumbbells	IWV	1A	1 A	Quality instruction is impacted.	\$ 400.00	One-Time	G
Tennis Balls	IWV	1A	1 A	Quality instruction is impacted.	\$ 600.00	Ongoing	G
Tennis Nets	IWV	2A	1 A	Quality instruction is impacted.	\$ 600.00	One-Time	G
Supplies for First Aid Courses HSCI C105	IWV	1A	1A	Quality instruction is impacted.	\$ 900.00	On-Going	G
Conditioning Exercise Balls		1A	1A	Quality instruction is impacted.	\$ 400.00	One-Time	G

d. Non-Technology Equipment (per unit cost greater than \$1000). Enter requests on lines below. If more rows needed, Tab over from box on bottom right.

Describe resource requested	Location	Priority: 1 = high 2 = med 3 = low	Strategic Plan goal addressed by this resource	Provide a detailed rationale for the requested resource. The rationale should refer to your unit's mission and goals, recent Program Review or SLO assessment gaps, planning assumptions, and/or the College's Strategic Plan	Estimated amount of funding requested	Will this be one-time or on-going funding?	Funding Source: G=General Fund R=Restricted V = VTEA
Physical Education Equipment – Treadmills/Cardio Equipment	IWV	2A	1A	Older equipment needs replacement. Quality instruction is impacted.	\$12,000	One-Time	G



e. Technology Equipment (computers, data projectors, document readers, etc.). Enter requests on lines below. If more rows needed, Tab over from box on bottom right.

Describe resource requested	Location	Priority: 1 = high 2 = med 3 = low	Strategic Plan goal addressed by this resource	Provide a detailed rationale for the requested resource. The rationale should refer to your unit's mission and goals, recent Program Review or SLO assessment gaps, planning assumptions, and/or the College's Strategic Plan	Estimated amount of funding requested	Will this be one-time or on-going funding?	Funding Source: G=General Fund R=Restricted V = VTEA
None at this time							

f. Facilities. Enter requests on lines below. If more rows needed, Tab over from box on bottom right.

Describe resource requested	Location	Priority: 1 = high 2 = med 3 = low	Strategic Plan goal addressed by this resource	Provide a detailed rationale for the requested resource. The rationale should refer to your unit's mission and goals, recent Program Review or SLO assessment gaps, planning assumptions, and/or the College's Strategic Plan	Estimated amount of funding requested	Will this be one-time or on-going funding?	Funding Source: G=General Fund R=Restricted V = VTEA
Upholstering and repair of Weight Room and Cardio Equipment	IVW	1A	1A	Upholstery tears and becomes brittle because of daily use by students in exercise classes. Electronics on Cardio Equipment require periodic maintenance and repair. Quality instruction is impacted.	\$ 1000	Ongoing	G



Describe resource requested	Location	Priority: 1 = high 2 = med 3 = low	Strategic Plan goal addressed by this resource	Provide a detailed rationale for the requested resource. The rationale should refer to your unit's mission and goals, recent Program Review or SLO assessment gaps, planning assumptions, and/or the College's Strategic Plan	Estimated amount of funding requested	Will this be one-time or on-going funding?	Funding Source: G=General Fund R=Restricted V = VTEA
Refurbish and repair College Track surface.	IWV	2A,2C	1A, 1E	Track is officially used by our college classes, the community (Relay for Life, Over the Hill Track Club, and service area K-12 schools). Maintenance and repair of this track is a safety as well as a community service need. Safety is the concern.	TBD by M & O and KCCD Architect	One-Time	G
Additional lighting in the dirt parking light near the track/field access gates.	IWV	2C	1A	Needed to create a safely lighted environment and to improve student visibility during night classes as well as sporting events.	TBD by M & O and KCCD Architect	One-Time	G
Repair the scoreboard connections in the Gym floor.	IWV	1C /2C	1A	The wiring/connections are 20 years old and have experienced wear and tear. Operation of message board is intermittent. The situation needs to be assessed for safety concerns.	TBD by M & O and KCCD Architect	One-Time	G



Describe resource requested	Location	Priority: 1 = high 2 = med 3 = low	Strategic Plan goal addressed by this resource	Provide a detailed rationale for the requested resource. The rationale should refer to your unit's mission and goals, recent Program Review or SLO assessment gaps, planning assumptions, and/or the College's Strategic Plan	Estimated amount of funding requested	Will this be one-time or on-going funding?	Funding Source: G=General Fund R=Restricted V = VTEA
Tennis Court Re-Surfacing	I WV	1A,1C	1A	Courts are becoming slick and are losing their surface grip. Quality instruction is impacted.	TBD by M & O and KCCD Architect	One-Time	G

g. Travel (inter-campus, intra-district, conferences, etc.). Enter requests on lines below. If more rows needed, Tab over from box on bottom right.

Describe resource requested	Location	Priority: 1 = high 2 = med 3 = low	Strategic Plan goal addressed by this resource	Provide a detailed rationale for the requested resource. The rationale should refer to your unit's mission and goals, recent Program Review or SLO assessment gaps, planning assumptions, and/or the College's Strategic Plan	Estimated amount of funding requested	Will this be one-time or on-going funding?	Funding Source: G=General Fund R=Restricted V = VTEA
Department Chair Travel	KRV + Bishop	1A	1A	Funding will be used for travel to and from sites for adjunct evaluation procedures	\$ 150.00	Ongoing	G



h. Marketing (brochures, radio spots, promotional travel, etc.). Enter requests on lines below. If more lines needed, Tab over from box on bottom right.

Describe resource requested	Location	Priority: 1 = high 2 = med 3 = low	Strategic Plan goal addressed by this resource	Provide a detailed rationale for the requested resource. The rationale should refer to your unit's mission and goals, recent Program Review or SLO assessment gaps, planning assumptions, and/or the College's Strategic Plan	Estimated amount of funding requested	Will this be one-time or on-going funding?	Funding Source: G=General Fund R=Restricted V = VTEA
None at this time							

i. Other (institutional fees, library books). Enter requests on lines below. If more lines needed, Tab over from box on bottom right.

Describe resource requested	Location	Priority: 1 = high 2 = med 3 = low	Strategic Plan goal addressed by this resource	Provide a detailed rationale for the requested resource. The rationale should refer to your unit's mission and goals, recent Program Review or SLO assessment gaps, planning assumptions, and/or the College's Strategic Plan	Estimated amount of funding requested	Will this be one-time or on-going funding?	Funding Source: G=General Fund R=Restricted V = VTEA
None at this time							

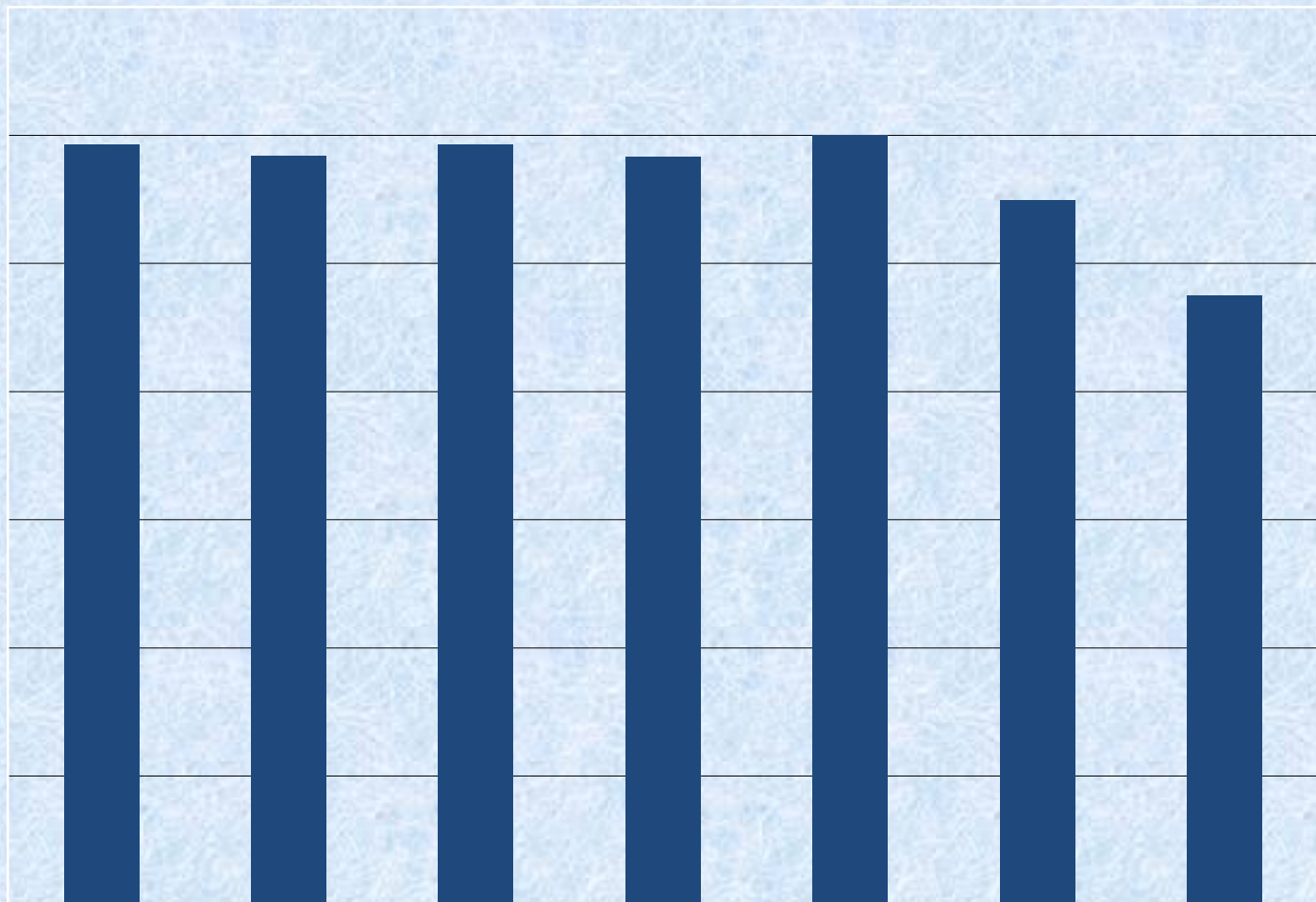


STEP 4: ATTACH PRIOR YEAR'S SLO ASSESSMENT DATA (as applicable)

STEP 5: ATTACH PRIOR YEAR'S STUDENT PERFORMANCE DATA (Instructional units only, as provided)



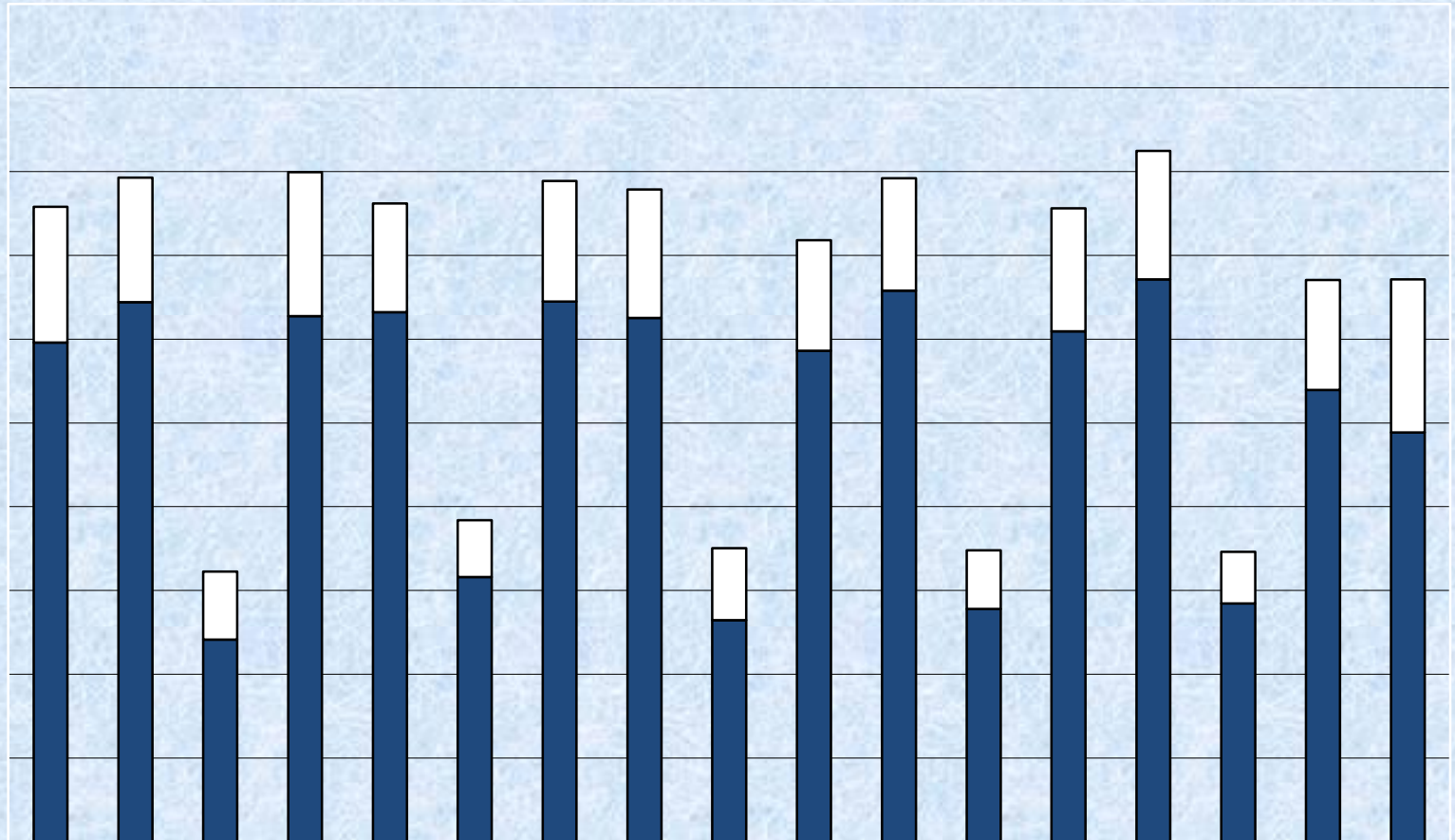
HEALTH SCIENCE & PHYSICAL EDUCATION FTES BY YEAR (Summer/Fall/Spring Semesters)



	2004-05	2005-06	2006-07	2007-08	2008-09	2009-10	2010-11
■ Total Department FTES	296.6	292	296.4	291.6	300.1	274.9	237.6



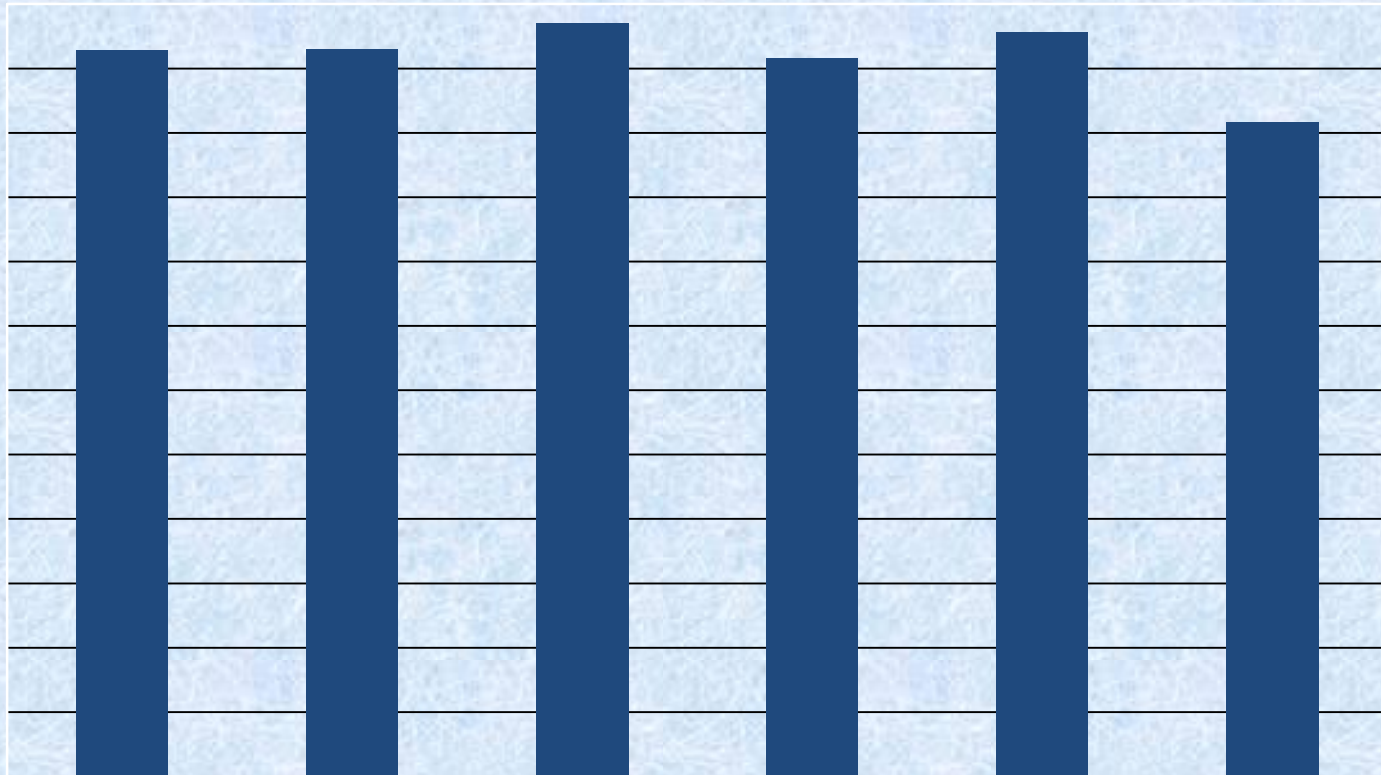
HEALTH SCIENCE AND PHYSICAL EDUCATION STUDENT ENROLLMENT AT CENSUS DATE BY SEMESTER



	Fall 04	Sp 05	Sum 05	Fall 05	Sp 06	Sum 06	Fall 06	Sp 07	Sum 07	Fall 07	Sp 08	Sum 08	Fall 08	Sp 09	Sum 09	Fall 09	Sp 10
□ Health Science	243	223	122	258	195	102	216	230	129	198	201	105	220	230	92	197	274
■ Physical Education	894	966	362	941	948	474	967	938	397	879	987	417	914	1007	427	809	733



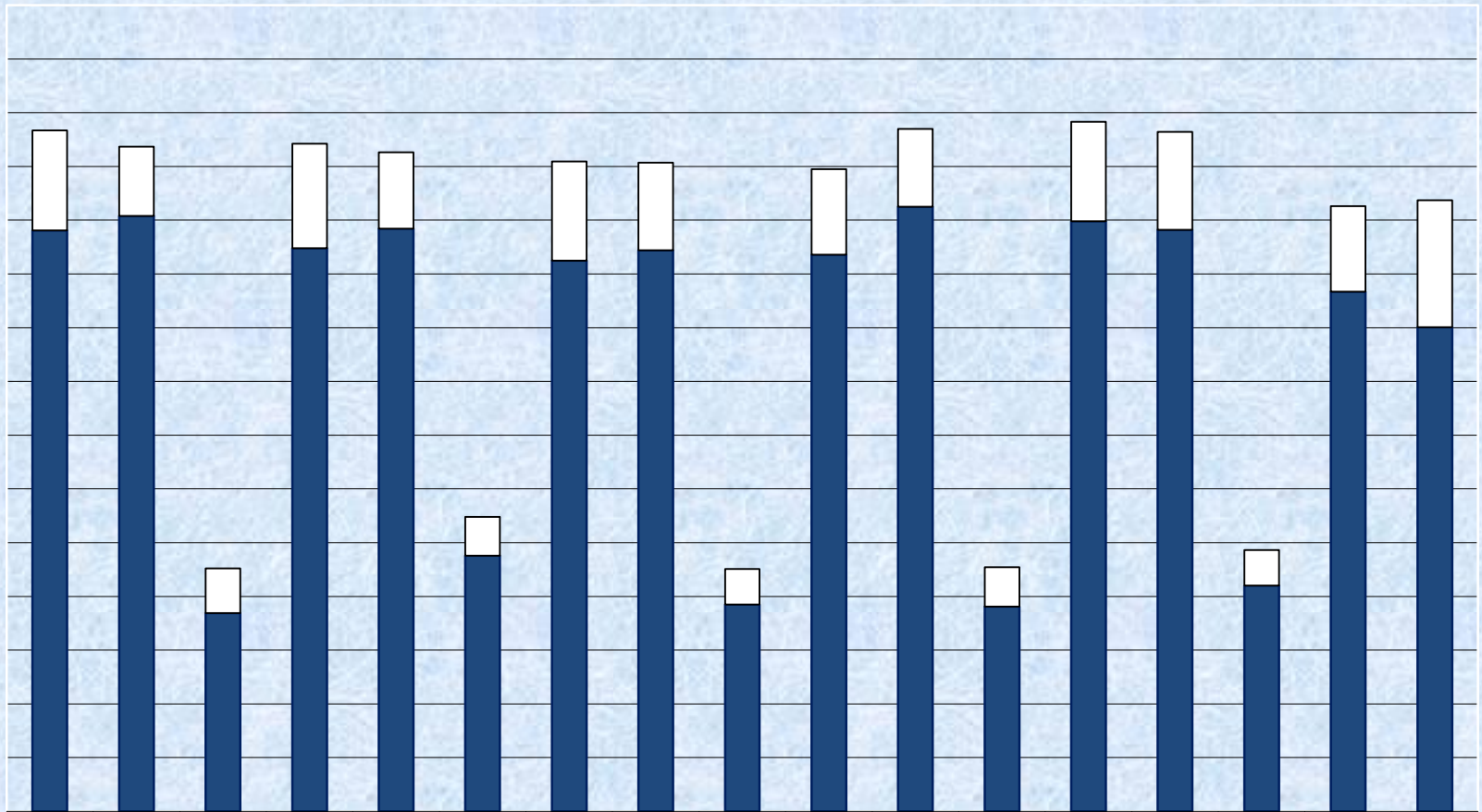
**HEALTH SCIENCE AND PHYSICAL EDUCATION
TOTAL STUDENT ENROLLMENT AT CENSUS DATE
BY YEAR (Summer/Fall/Spring)**



	2004-05	2005-06	2006-07	2007-08	2008-09	2009-10
■ CENSUS ENROLLMENT BY YEAR	2821	2826	2927	2791	2891	2542



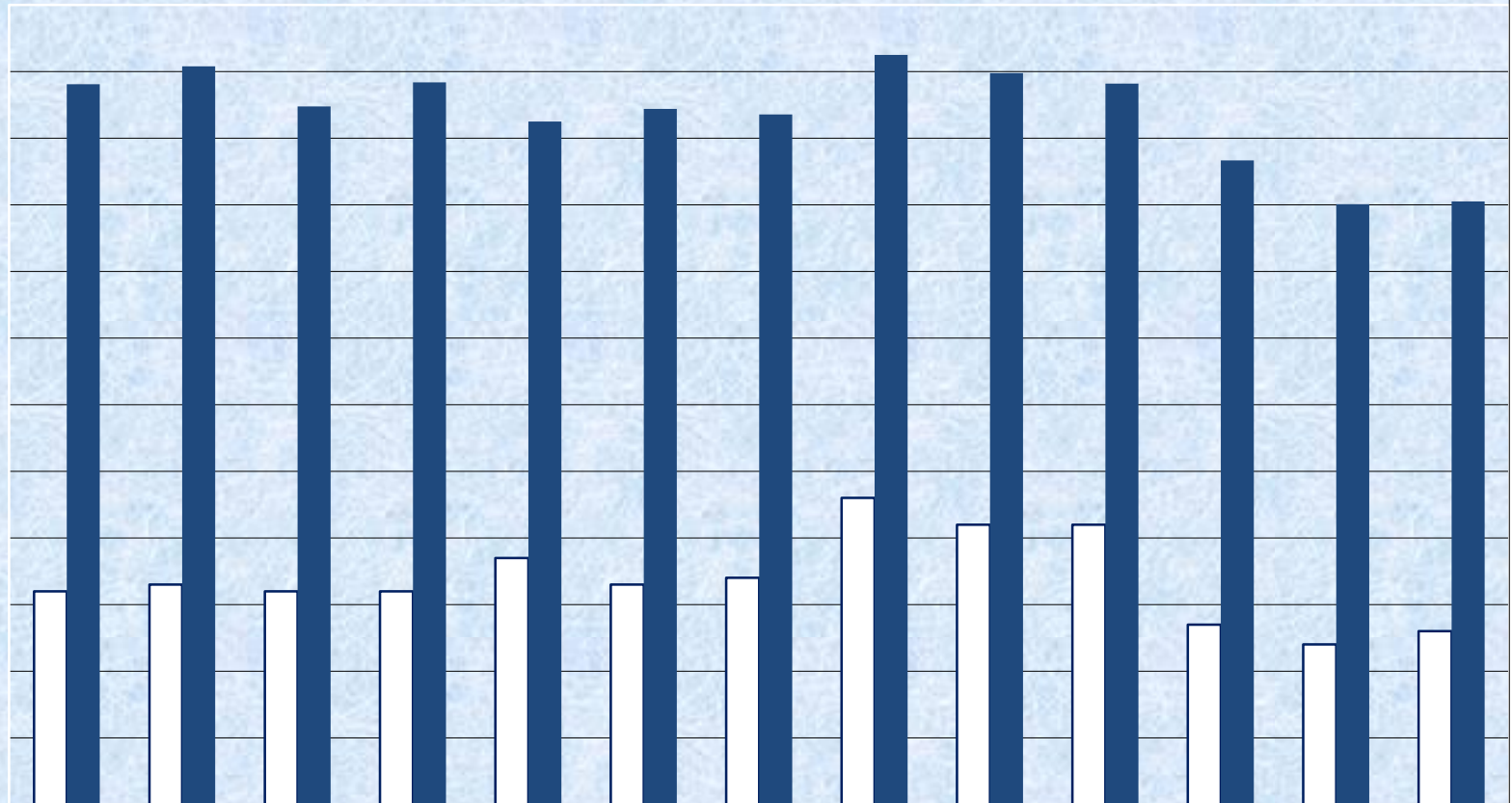
HEALTH SCIENCE & PHYSICAL EDUCATION FTES BY SEMESTER



	Fall 04	Sp 05	Sum 05	Fall 05	Sp 06	Sum 06	Fall 06	Sp 07	Sum 07	Fall 07	Sp 08	Sum 08	Fall 08	Sp 09	Sum 09	Fall 09	Sp 10
□ HSCI FTES	18.6	12.9	8.3	19.4	14.2	7.2	18.4	16.3	6.6	15.9	14.5	7.3	18.5	18.2	6.6	15.9	23.6
■ PHED FTES	108.1	110.8	36.9	104.8	108.4	47.6	102.5	104.4	38.5	103.6	112.5	38.1	109.8	108.2	42	96.7	90.1



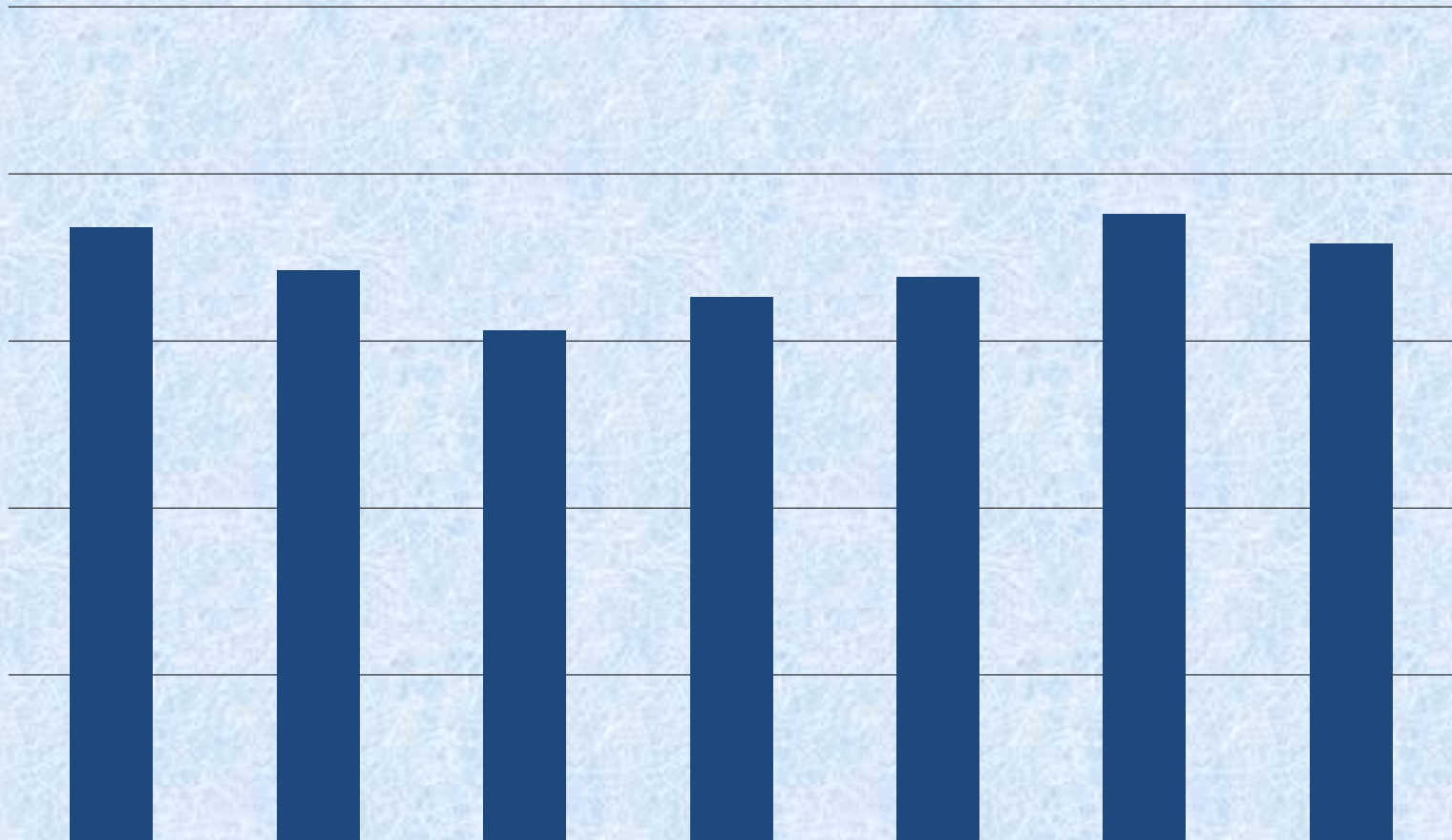
PHYSICAL EDUCATION COURSE OFFERINGS AND FTES FALL & SPRING SEMESTER



	Fall 04	Sp 05	Fall 05	Sp 06	Fall 06	Sp 07	Fall 07	Sp 08	Fall 08	Sp 09	Fall 09	Sp 10	Fall 10
□ Number of Courses	32	33	32	32	37	33	34	46	42	42	27	24	26
■ FTES By Semester	108.1	110.8	104.8	108.4	102.5	104.4	103.6	112.5	109.8	108.2	96.7	90.1	90.5



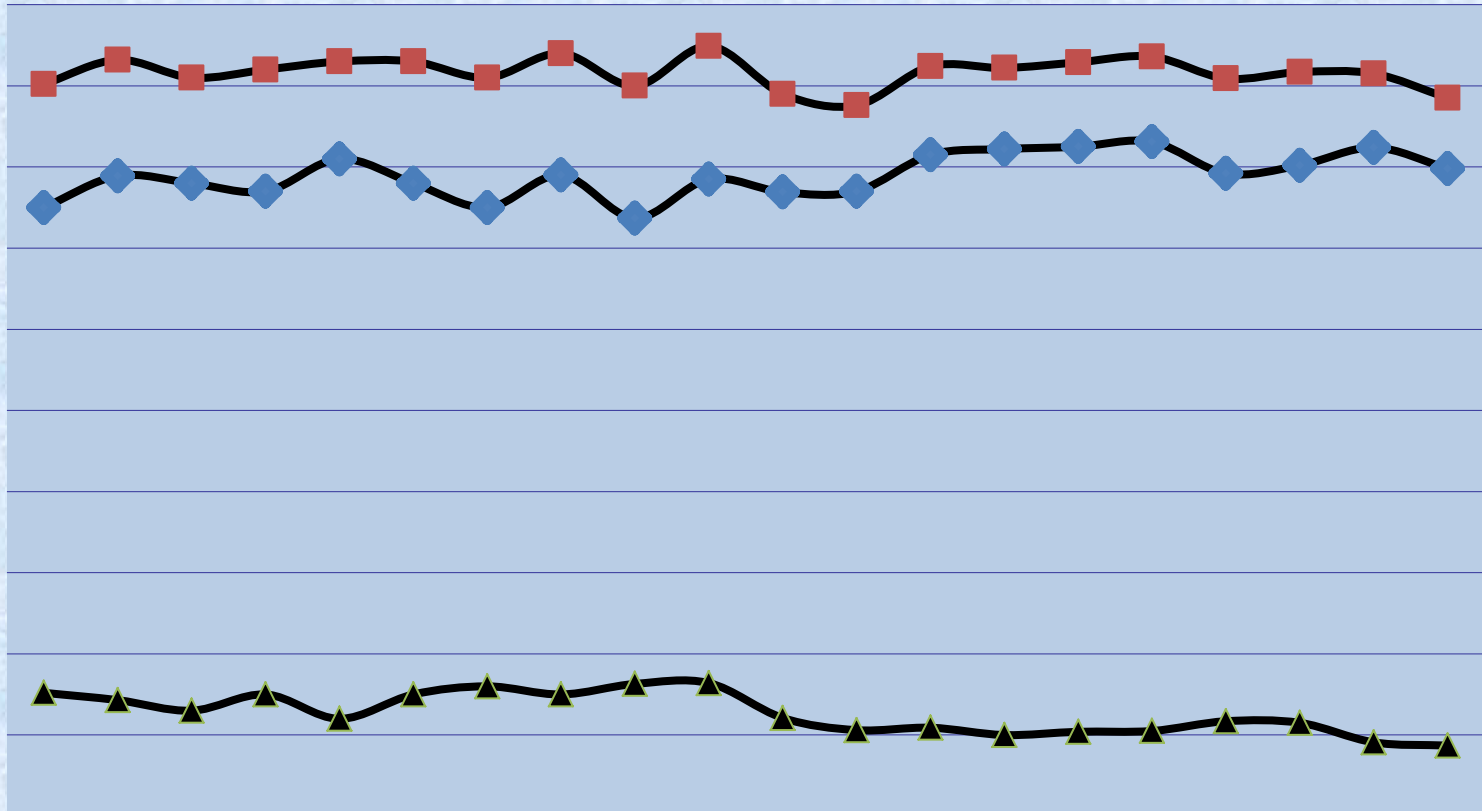
PHYSICAL EDUCATION FTES/FTEF RELATIONSHIP BY YEAR (Summer, Fall, Spring)



	2004-05	2005-06	2006-07	2007-08	2008-09	2009-10	2010-11
■ PHED FTES/FTEF	18.4	17.1	15.3	16.3	16.9	18.8	17.9



PHYSICAL EDUCATION STUDENT RETENTION AND SUCCESS RATE COMPARISON



	Fall 00	Sp 01	Fall 01	Sp 02	Fall 02	Sp 03	Fall 03	Sp 04	Fall 04	Sp 05	Fall 05	Sp 06	Fall 06	Sp 07	Fall 07	Sp 08	Fall 08	Sp 09	Fall 09	Sp 10
PHED Retention Rate	90.2	93.2	91.0	92.0	93.0	93.0	91.0	94.0	90.0	94.9	89.0	87.6	92.4	92.2	92.9	93.6	90.9	91.7	91.5	88.5
PHED Success Rate	75.0	78.9	78.0	77.0	81.0	78.0	75.0	79.0	73.7	78.5	76.9	77.0	81.5	82.2	82.5	83.1	79.2	80.2	82.4	79.8
% Difference	15.2	14.3	13.0	15.0	12.0	15.0	16.0	15.0	16.3	16.4	12.1	10.6	10.9	10.0	10.4	10.5	11.7	11.5	9.1%	8.7%



Program Review Data for Academic_Period BETWEEN '200750' AND '201130', Section_Status_Code = 'A', CC College

7/15/2011

Subject:PHED	Top_Code:<All>	Campus_Desc:<All>
--------------	----------------	-------------------

ACAD YEAR	TERM	SUBJECT	Sections	Enrollment	Students / Section	FTEs	FTEF	Adjunct FTEF	FTEs/FTEF	Total Grades	# Retained	% Retained	# Succeeded	% Succeeded	
2007-2008			289	2,268	7.8	254.6	15.6	7.0	16.3	2,293	2,206	96.2%	1,970	85.9%	
	200750		50	397	7.9	38.5	2.7	2.1	14.3	439	431	98.2%	394	89.7%	
		Physical Education	50	397	7.9	38.5	2.7	2.1	14.3	439	431	98.2%	394	89.7%	
	200770			101	884	8.8	103.6	6.1	2.4	17.0	869	835	96.1%	742	85.4%
		Physical Education	101	884	8.8	103.6	6.1	2.4	17.0	869	835	96.1%	742	85.4%	
	200830			138	987	7.2	112.5	6.8	2.5	16.5	985	940	95.4%	834	84.7%
Physical Education		138	987	7.2	112.5	6.8	2.5	16.5	985	940	95.4%	834	84.7%		
2008-2009			298	2,344	7.9	255.8	15.1	7.3	16.9	2,192	2,026	92.4%	1,800	82.1%	
	200850		46	417	9.1	38.0	2.3	1.5	16.3	435	422	97.0%	400	92.0%	
		Physical Education	46	417	9.1	38.0	2.3	1.5	16.3	435	422	97.0%	400	92.0%	
	200870			126	922	7.3	109.6	6.5	2.8	17.0	937	852	90.9%	742	79.2%
		Physical Education	126	922	7.3	109.6	6.5	2.8	17.0	937	852	90.9%	742	79.2%	
	200930			126	1,005	8.0	108.2	6.3	3.1	17.1	820	752	91.7%	658	80.2%
Physical Education		126	1,005	8.0	108.2	6.3	3.1	17.1	820	752	91.7%	658	80.2%		
2009-2010			193	1,978	10.2	226.1	12.2	6.0	18.6	1,995	1,810	90.7%	1,626	81.5%	
	200950		42	437	10.4	42.0	2.2	1.2	19.3	430	401	93.3%	355	82.6%	
		Physical Education	42	437	10.4	42.0	2.2	1.2	19.3	430	401	93.3%	355	82.6%	
	200970			79	809	10.2	96.2	5.2	2.3	18.7	816	746	91.4%	672	82.4%
		Physical Education	79	809	10.2	96.2	5.2	2.3	18.7	816	746	91.4%	672	82.4%	
	201030			72	732	10.2	87.9	4.8	2.5	18.2	749	663	88.5%	599	80.0%
Physical Education		72	732	10.2	87.9	4.8	2.5	18.2	749	663	88.5%	599	80.0%		
2010-2011			137	1,558	11.4	181.0	10.1	4.7	17.9	1,543	1,362	88.3%	1,233	79.9%	
	201050		10	177	17.7	17.4	0.8	0.2	21.7	173	157	90.8%	142	82.1%	
		Physical Education	10	177	17.7	17.4	0.8	0.2	21.7	173	157	90.8%	142	82.1%	
	201070			66	751	11.4	90.5	4.8	2.3	19.0	752	661	87.9%	594	79.0%
		Physical Education	66	751	11.4	90.5	4.8	2.3	19.0	752	661	87.9%	594	79.0%	
	201130			61	630	10.3	73.2	4.5	2.3	16.1	618	544	88.0%	497	80.4%
Physical Education		61	630	10.3	73.2	4.5	2.3	16.1	618	544	88.0%	497	80.4%		
Sum			659	8,148	12.4	917.5	53.0	25.0	17.3	8,023	7,404	92.3%	6,629	82.6%	

Revised: 11/7/11



Subject:HSC I	Top_Code:<All >	Campus_Desc:<All >
------------------	--------------------	-----------------------

ACAD YEAR	TERM	SUBJECT	Sections	Enrollment	Students / Section	FTE S	FTE F	Adjunct FTEF	FTES/FTE F	Total Grades	# Retained	% Retained	# Succeeded	% Succeeded	
2007-2008			21	528	25.1	37.0	2.5	0.9	14.6	477	437	91.6%	338	70.9%	
	200750		5	129	25.8	6.6	0.5	0.1	12.9	120	105	87.5%	93	77.5%	
		Health Science	5	129	25.8	6.6	0.5	0.1	12.9	120	105	87.5%	93	77.5%	
	200770			9	198	22.0	15.9	1.1	0.5	14.3	183	168	91.8%	129	70.5%
		Health Science	9	198	22.0	15.9	1.1	0.5	14.3	183	168	91.8%	129	70.5%	
	200830			7	201	28.7	14.5	0.9	0.3	16.0	174	164	94.3%	116	66.7%
Health Science		7	201	28.7	14.5	0.9	0.3	16.0	174	164	94.3%	116	66.7%		
2008-2009			20	553	27.7	44.0	2.7	0.7	16.5	530	487	91.9%	410	77.4%	
	200850		4	105	26.3	7.3	0.5	0.1	15.5	97	94	96.9%	84	86.6%	
		Health Science	4	105	26.3	7.3	0.5	0.1	15.5	97	94	96.9%	84	86.6%	
	200870		8	220	27.5	18.5	1.1	0.3	17.2	213	190	89.2%	160	75.1%	
		Health Science	8	220	27.5	18.5	1.1	0.3	17.2	213	190	89.2%	160	75.1%	
	200930			8	228	28.5	18.2	1.1	0.3	16.4	220	203	92.3%	166	75.5%
Health Science		8	228	28.5	18.2	1.1	0.3	16.4	220	203	92.3%	166	75.5%		
2009-2010			22	563	25.6	46.1	2.7	0.5	17.1	531	469	88.3%	396	74.6%	
	200950		4	92	23.0	6.6	0.5	0.1	13.9	84	74	88.1%	68	81.0%	
		Health Science	4	92	23.0	6.6	0.5	0.1	13.9	84	74	88.1%	68	81.0%	
	200970		9	197	21.9	15.9	0.9	0.1	17.5	185	172	93.0%	153	82.7%	
		Health Science	9	197	21.9	15.9	0.9	0.1	17.5	185	172	93.0%	153	82.7%	
	201030			9	274	30.4	23.6	1.3	0.3	18.0	262	223	85.1%	175	66.8%
Health Science		9	274	30.4	23.6	1.3	0.3	18.0	262	223	85.1%	175	66.8%		
2010-2011			23	703	30.6	56.5	3.3	0.5	17.1	666	556	83.5%	440	66.1%	
	201050		4	101	25.3	7.5	0.5	0.1	15.8	100	95	95.0%	88	88.0%	
		Health Science	4	101	25.3	7.5	0.5	0.1	15.8	100	95	95.0%	88	88.0%	
	201070		9	296	32.9	23.7	1.3	0.1	18.1	276	223	80.8%	171	62.0%	
		Health Science	9	296	32.9	23.7	1.3	0.1	18.1	276	223	80.8%	171	62.0%	
	201130			10	306	30.6	25.3	1.5	0.3	16.8	290	238	82.1%	181	62.4%
Health Science		10	306	30.6	25.3	1.5	0.3	16.8	290	238	82.1%	181	62.4%		



SUBJECT	COR #	TITLE	LAST OFFERED	ASSESSED? WHEN?	TOP-DOWN?		BOTTOM-UP?		NOT OFFERED	DELETE?	FACULTY RESPONSIBLE
					FALL 2011	SPRING 2012	FALL 2011	SPRING 2012			
PHYSICAL EDUCATION											
HSCI -	C101 -	Principles of Health Education	201170			X	X				Bill, Dick, Tom
HSCI -	C105 -	First Aid/CR/AED	201170			X	X				Dana, Jean
PHED -	C101 -	Foundations of Physical Educa.	201170		X						Dick
PHED -	C102 -	Personal Lifelong Fitness	201130						X		
PHED -	C103 -	Aerobic Dance I	201170		X						Susie
PHED -	C104 -	Aerobic Dance II	201170		X						Susie
PHED -	C105 -	Weight Training I	201170		X						Bill
PHED -	C106 -	Weight Training II	201170		X						Bill
PHED -	C107 -	General Conditioning I	201170			X	X				Dick, Jean
PHED -	C108 -	General Conditioning II	201170			X	X				Dick, Jean
PHED -	C109 -	Golf I	201130						X		
PHED -	C110 -	Golf II	201130						X		
PHED -	C113 -	Tennis I	201170		X						Tom
PHED -	C114 -	Tennis II	201170		X						Tom
PHED -	C115 -	Volleyball I	201170		X						Dana
PHED -	C116 -	Volleyball II	201170		X						Dana
PHED -	C117 -	Basketball I	200370								
PHED -	C118 -	Basketball II	201150								
PHED -	C123 -	Softball I	200830						X		
PHED -	C124 -	Softball II	200830						X		
PHED -	C125 -	Soccer I	NEVER								
PHED -	C126 -	Soccer II	NEVER								
PHED -	C129 -	Cardiovascular Fitness I	201170		X						Tom



PHED -	C130 -	Cardiovascular Fitness II	201170		X						Tom
PHED -	C131 -	Wellness Walking I	201170		X						Dick
PHED -	C132 -	Wellness Walking II	201170		X						Dick
PHED -	C140 -	Day Hiking	201050		X						Frey
PHED -	C147 -	Adaptive Physical Education I	200130								
PHED -	C148 -	Adaptive Physical Education II	200130								
PHED -	C151 -	Intro Gen Cond. for Comp. Ath.	201170		X						Tom
PHED -	C152 -	Beg. Gen. Cond. for Comp. Ath.	201170		X						Tom
PHED -	C155 -	Care & Prevention of Ath. Inj.	201070								
PHED -	C156 -	Practicum in Athletic Training	201130						X		
PHED -	C173 -	Intercollegiate Baseball I	201130			X					Holmes
PHED -	C174 -	Intercollegiate Baseball II	201130			X					Holmes
PHED -	C175 -	Competitive Baseball I	201170		X						Holmes
PHED -	C176 -	Competitive Baseball II	201170		X						Holmes
PHED -	C177 -	Women's Intercol. Bsktbl. I	201170		X						Jackson
PHED -	C178 -	Women's Intercol. Bsktbl. II	201130		X						Jackson
PHED -	C181 -	Intercollegiate Softball I	200330								
PHED -	C183 -	Competitive Softball I	200270								
PHED -	C184 -	Competitive Softball II	200270								
PHED -	C276 -	Advanced Baseball Skills	201130			X					Holmes
PHED -	C277 -	Women's Intercol. Bsktbl. III	201170			X					Jackson
PHED -	C278 -	Women's Intercol. Bsktbl. IV	201130			X					Jackson
PHED -	C281 -	Intercollegiate Softball II	200330								
PHED -	C283 -	Competitive Softball III	200270								